

2.75 S
1.66 W

McCUNNINGHAM

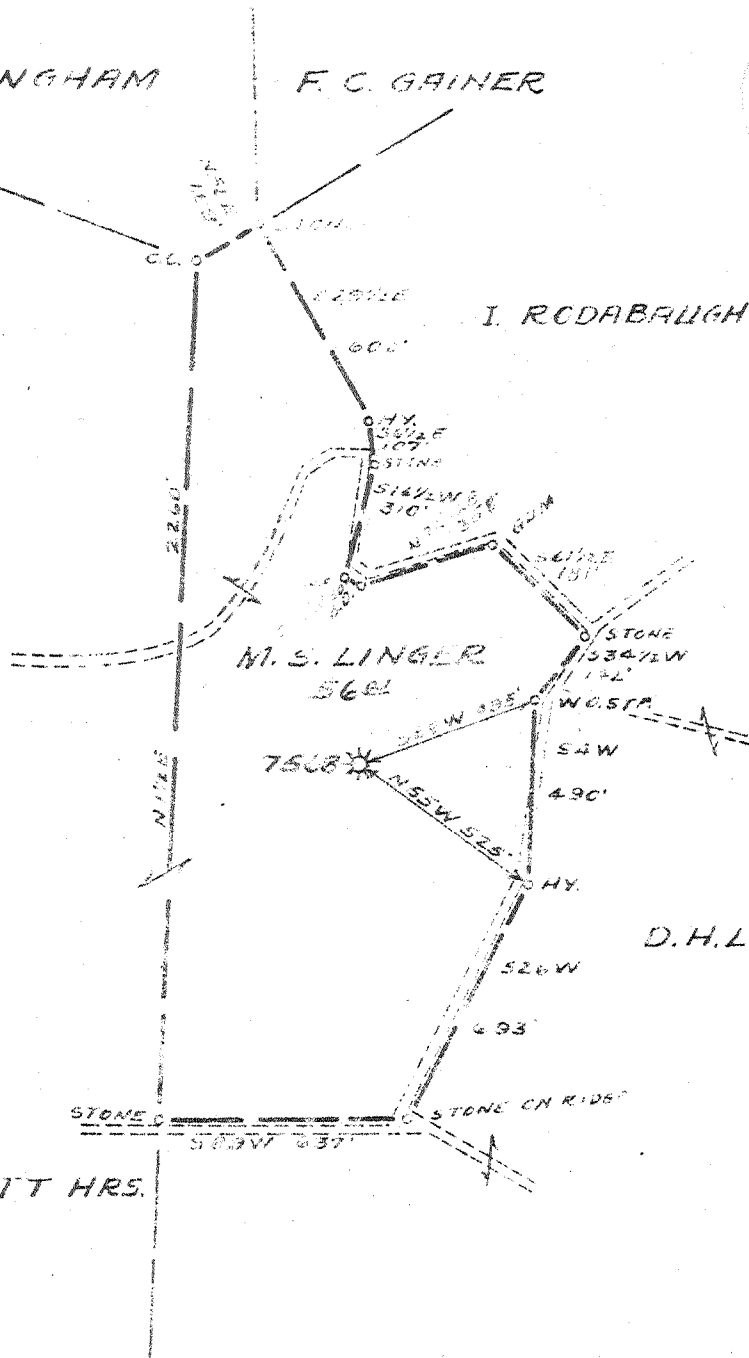
F. C. GAINER

I. RODABAUGH

M. S. LINGER
56 A.

D. H. LINGER

BENNETT HRS.



New Location
 Drill Deeper
 Abandonment

Company PITTSBURGH & W.V.A. GAS CO.
 Address CLARKSBURG, W.V.H.
 Farm M. S. LINGER
 Tract _____ Acres 56 Lease No. 8535
 Well Farm No. ONE Serial No. 7568
 Elevation (Spirit Level) 976 L.
 Quadrangle GLENVILLE N.W. 1 1/2
 County GILMER District DEKALE
 Engineer J. E. Sizer
 Engineer's Registration No. 764
 File No. V-34 P 37 Drawing No. _____
 Date AUG. 5, 1930 Scale 1" = 500'

STATE OF WEST VIRGINIA
 DEPARTMENT OF MINES
 OIL AND GAS DIVISION
 CHARLESTON

WELL LOCATION MAP

FILE NO. GIL-267-A

+ Denotes location of well on United States Topographic Maps, scale 1 to 62,500, latitude and longitude lines being represented by border lines as shown.

-- Denotes one inch spaces on border line of original tracing.

Longitude 80 55



423

STATE OF WEST VIRGINIA
DEPARTMENT OF MINES
OIL AND GAS DIVISION

WELL RECORD

"GAS"

Oil or Gas Well

(KIND)

Permit No. 1267-A

Company Pittsburgh & West Va Gas Company.

Address Clarksburg, West Va.

Farm M. S. Linger Acres 56

Location (waters) Glenville N/W. 1-4

Well No. 7568 Elev 976' L.

District DeKalb County Gilmer

The surface of tract is owned in fee by Mrs. D. H. Linger
Glenville, W. Va.

Mineral rights are owned by M. S. Linger et al.
214 Vienna St. Parkersburg, W. Va.

Drilling commenced October 10, 1930

Drilling completed November 12, 1930

Date Shot _____ From _____ To _____

With _____

Open Flow _____ /10ths Water in _____ Inch

_____ /10ths Merc. in _____ Inch

Volume _____ Cu. Ft.

Rock Pressure _____ lbs. _____ hrs.

Oil _____ bbls., 1st 24 hrs.

Fresh water _____ feet _____ feet

Salt water _____ feet _____ feet

Casing and Tubing	Used in Drilling	Left in Well	Packers
Size			Kind of Packer
16			
18			
10	120'	120'	Size of
8 1/4	805'	805'	
6 5/8			Depth set
5 3/16	1802'	1802'	
3			Perf. top
2			Perf. bottom
Liners Used			Perf. top
			Perf. bottom

CASING CEMENTED _____ SIZE _____ No. Ft. _____ Date _____

COAL WAS ENCOUNTERED AT _____ FEET _____ INCHES

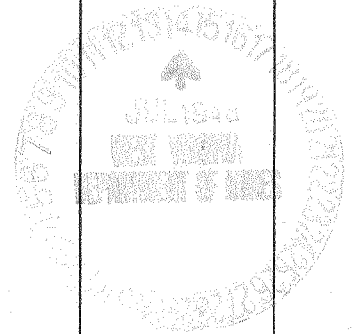
_____ FEET _____ INCHES _____ FEET _____ INCHES

_____ FEET _____ INCHES _____ FEET _____ INCHES

Formation	Color	Hard or Soft	Top	Bottom	Oil, Gas or Water	Depth Found	Remarks
Clay	Light	Soft	0	10	Water	40'	
Red Rock	"	"	10	40			
Slate-Shell	Dark	"	40	90			
Red Rock	Red	"	90	150			
Sand	Light	Medium	150	220			
Slate-Line	"	Soft-Medium	220	375			
Sand	"	Medium	375	395			
Slate-Line	"	"	395	465			
Red Rock	Red	Soft	465	495			
Slate-Shell	Light	Soft-Hard	495	550			
Red Rock	Red	Soft	550	610			
Slate	Light	"	610	625			
Red Rock	Red	"	625	640			
Slate-Line	Light	Medium	640	685			
Red Rock	Red	Soft	685	705			
Slate-Shell	Light	Soft-Hard	705	755			
Slate	Dark	Soft "	755	770			
Slate-Shell	Light	" "	770	800			
Little Dunkard	"	" "	800	820			
Slate-Shell	"	" "	820	905			
Sand	"	" "	905	930			
Slate	"	" "	930	955			
Big Dunkard	"	Medium Hard	955	985			
Slate	Dark	Soft	985	995			
Sand	"	"	995	1010			
Slate-Shell	"	Soft-Hard	1010	1090			
Gas Sand	"	Medium	1090	1200			
Slate-Shell	"	Soft-Medium	1200	1250			
1st. Salt Sand	Light	Soft	1250	1270			
Slate-Shell	Dark	"	1270	1340			
Sand	"	Medium	1340	1360			
Slate-Shell	"	Soft	1360	1450			
2nd. Salt Sand	"	Medium	1450	1480			
Slate-Shell	"	"	1480	1550			
Lime	"	"	1550	1600			
3rd. Salt Sand	"	Hard	1600	1630			
Slate	"	Soft	1630	1635			
Red Rock	Red	"	1635	1642			
Slate-Line	Light	Soft-Hard	1642	1700			

(Over)

JAN 22 1949



Formation	Color	Hard or Soft	Top	Bottom	Oil, Gas or Water	Depth Found	Remarks
Maxon Sand	Light	Hard	1700	1705			
Slate	"	Soft	1705	1710			
Red Rock	Red	"	1710	1715			
Slate-Lime	Dark	Soft-Hard	1715	1730			
Little Lime	"	" "	1730	1747			
Slate	"	Soft	1747	1748			
Lime	Light	Hard	1748	1755			
Sand	White	"	1755	1761			
Slate	"	Soft	1761	1781			
Big Lime	Gray	Hard	1781	1825	Gas	1792-93'	
Big Injun	Dark	"	1825	1943	Gas	1837-39'	
Slate	"	Soft	1943	1975	Gas	1930-42'	
Total Depth.			1975				

June 22, 1948

Date _____, 19____

PITTSBURGH & WEST VA GAS COMPANY,

APPROVED _____, Owner

By W. J. McMaster
(Title)

Abd 6-10-48

Record of Well No. 7568 Located on M.S.Linger Farm Aug-5- 1930
 DeKalb District Gilmer County W.Va. State
 Division K District No. 13 Drilled under well Order 2179
 Rig built by W.H.Satterfield Began Sept-18 1930 Completed Sept-27 1930.
 Well drilled by W.H.Satterfield Began Oct-10 1930 Completed Nov-12th 1930
 Depth of Well 1975 feet Size of Hole 5 3/16" Producing Gas

Elev: 976G

CASED WITH

REMARKS

AMOUNT	SIZE	KIND	REMARKS
120	10"	Casing	Pulled 120'
865	8 1/2"	"	Pulled 743' Left in 62'
1802	5 3/16"	"	1-6 5/8 x 5 3/16 Anchor Packer set at 1802 Pulled 1802'

COAL VEINS

FORMATIONS

NAME	TOP	BOTTOM	OIL	GAS	WATER	REMARKS
Big Dunbar Sand	955	985			40	
Gas Sand	1090	1200			210	
1st Salt Sand	1250	1270				
2nd Salt Sand	1450	1480				
3rd Salt Sand	1600	1630				
Maxon Sand	1700	1705				
Little Lime	1730	1747				Reduced Hole at 1747
Big Lime	1781	1825		1792		
Big Injun Sand	1825	1943		1793		

Plugged 11-3-48 to 11-5-48
 Aqueduct
 Cement 1975-1975
 Aqueduct 1810-1765
 Cement 1755-1715
 Aqueduct 1745-1705
 Cement 1700-1670
 Aqueduct 1690-1650
 Cement 1625-1615
 Aqueduct 1515-150
 Cement 150-140
 Aqueduct 140-5
 Cement 5'-Surface

Shot November 11th, 1930.
 30 Quarts, Length of Shell 12 feet, length of anchor, none.
 Bottom of shell at 1942
 Shot by King, Marietta Tor. Co.
 Before shot 40/10 Water in 1" 6" in 2"
 6 Hours after 30/10 " in 2"
 231 mcf

FIRST PRESSURE TEST IN 5 3/16" CASING

REMARKS

30 Sec. 5 lbs.
 1 Min. 10 "
 2 " 20 "
 5 " 40 3/28 4/35
 10 " 75 "
 15 " 115 "
 30 " "

Open flow 30/10 Water in 2".

Rock Pressure 350 lbs. " in 24 Hours

Taken November 16th 1930.

By H.E.Wilt.

WELL TUBED AND PACKED 19

VIZ:-

FIRST PRESSURE TEST IN TUBING

REMARKS

30 Sec. lbs.
 1 Min. "
 2 " "
 5 " "
 10 " "
 15 " "
 30 " "

Rock Pressure " in

Taken 19

By

MATERIAL FOR THIS WELL RECEIVED FROM FOLLOWING SOURCES:

[Faint handwritten notes or signatures]

FORMATIONS

NAME	Top	Bottom	OIL	GAS	WATER	REMARKS
Clay	0	10				
Red Rock	10	40			40	
Slate & Shells	40	90				
Red Rock	90	150				
Sand	150	220			210	
Slate & Lime	220	375				
Sand	375	395				
Slate & Lime	395	465				
Red Rock	465	495				
Slate & Shells	495	550				
Red Rock	550	610				
Slate	610	625				
Red Rock	625	640				
Slate & Lime	640	685				
Red Rock	685	705				
Slate & Shells	705	755				
Slate	755	770				
Slate & Shells	770	800				
Little Dunkard	800	820				
Slate & Shells	820	905				
Sand	905	930				
Slate	930	955				
Big Dunkard Sand	955	985				
Slate	985	995				
Sand	995	1010				
Slate & Shells	1010	1090				
Gas Sand	1090	1200				
Slate & Shells	1200	1250				
1st Salt Sand	1250	1270				
Slate & Shells	1270	1340				
Sand	1340	1360				
Slate & Shells	1360	1450				
2nd Salt Sand	1450	1480				
Slate & Shells	1480	1550				
Lime	1550	1600				
3rd Salt Sand	1600	1630				
Slate	1630	1635				
Red Rock	1635	1642				
Slate & Lime	1642	1700				
Maxon Sand	1700	1705				
Slate	1705	1710				
Red Rock	1710	1715				
Slate & Lime	1715	1730				
Little Lime	1730	1747				
Slate	1747	1748				Reduced Hole at 1747
Lime	1748	1755				
Sand	1755	1761				
Slate	1761	1781			1792	
Big Lime	1781	1825			1795	
Big Injun	1825	1943			1837	
Slate	1943	1975			1830	
					1930	
Total Depth		1975			1942	