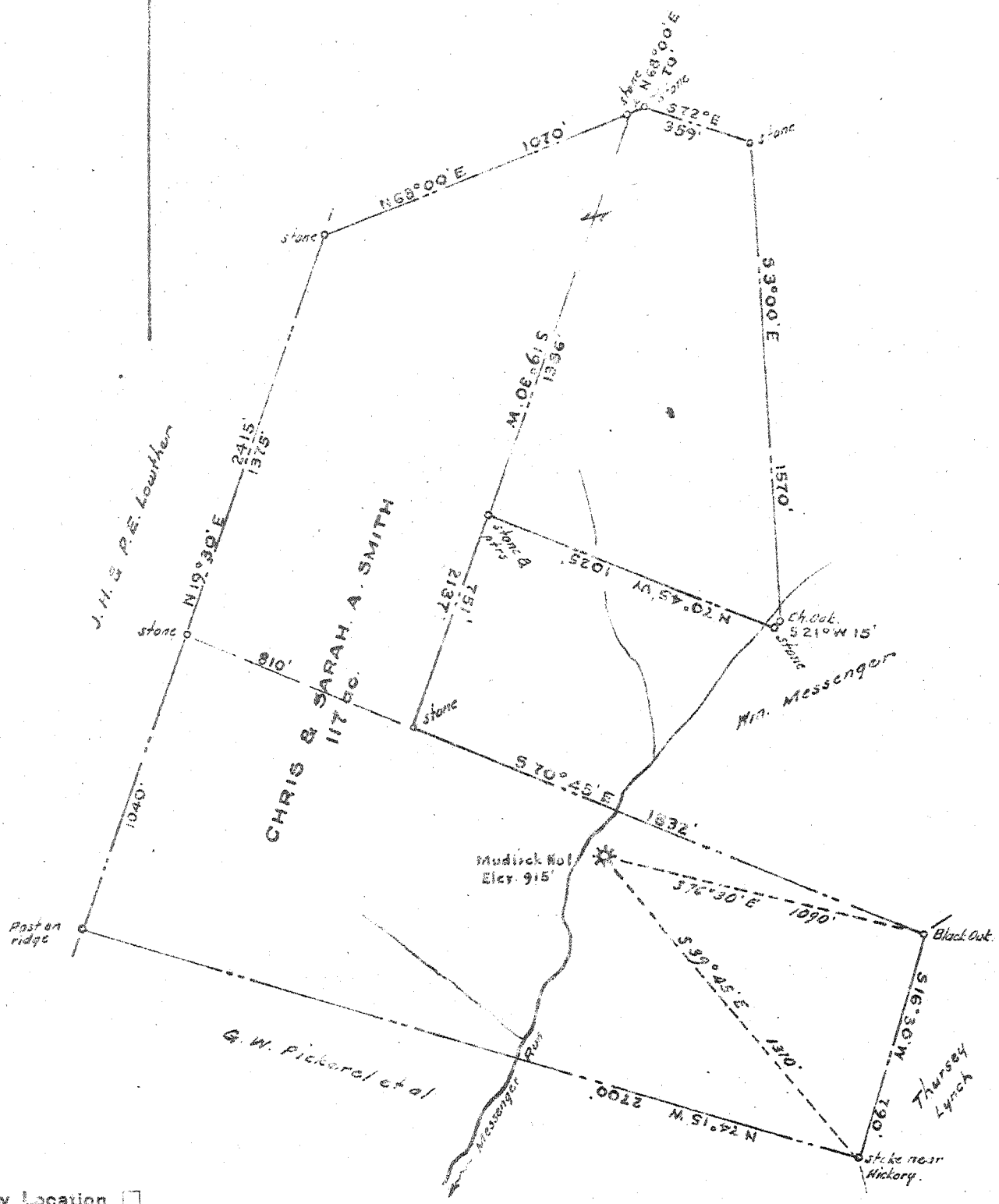


1120
2.37W



- New Location
- Drill Deeper
- Abandonment

NOTE: No commercial coal mines in this vicinity.

Company MUDLICK OIL & GAS CO.
 Address 612 Keystone Bldg., Pittsburgh, Pa.
 Farm Chris and Sarah A. Smith
 Tract Acres 117 Lease No.
 Well (Farm) No. One Serial No. 1-30
 Elevation (Spirit Level) 915'
 Quadrangle Burnsville
 County Gilmer District Glenville
 Engineer W. H. H. H.
 Engineer's Registration No. 1227
 File No. Drawing No.
 Date June, 1948 Scale 1" = 500'

STATE OF WEST VIRGINIA
 DEPARTMENT OF MINES
 OIL AND GAS DIVISION
 CHARLESTON

WELL LOCATION MAP
 FILE NO. GIL-268-A

+ Denotes location of well on United States Topographic Maps, scale 1 to 62,500, latitude and longitude lines being represented by border lines as shown.
 - Denotes one inch spaces on border line of original tracing.