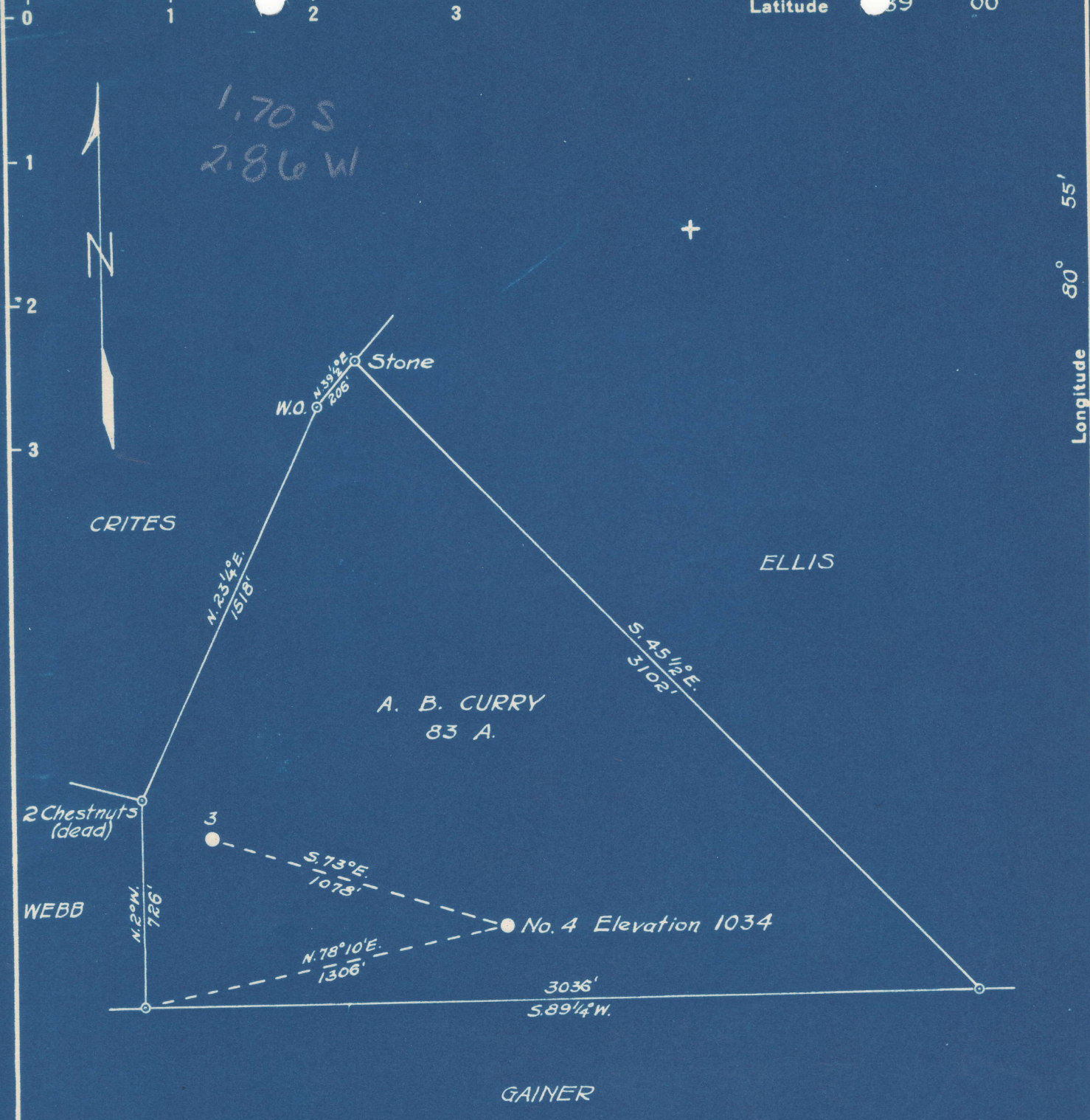


M

Latitude 39° 00'



1.70 S
2.86 W

Longitude 80° 55'

1.72 S
2.82 W

- New Location..
- Drill Deeper.....
- Abandonment.....

Company F. S. DEEM

Address HARRISVILLE, W. VA.

Farm A. B. CURRY

Tract _____ Acres 83 Lease No. _____

Well (Farm) No. 4 Serial No. _____

Elevation (Spirit Level) 1034

Quadrangle GLENVILLE

County GILMER District DE KALB

Engineer B. F. RINEHART

Engineer's Registration No. 648

File No. _____ Drawing No. 683-DG

Date June 4, 1948 Scale 1 in. = 500 ft.

STATE OF WEST VIRGINIA
DEPARTMENT OF MINES
OIL AND GAS DIVISION
CHARLESTON

WELL LOCATION MAP
FILE NO. GIL-286-A

+ Denotes location of well on United States Topographic Maps, scale 1 to 62,500, latitude and longitude lines being represented by border lines as shown.

- Denotes one inch spaces on border line of original tracing.