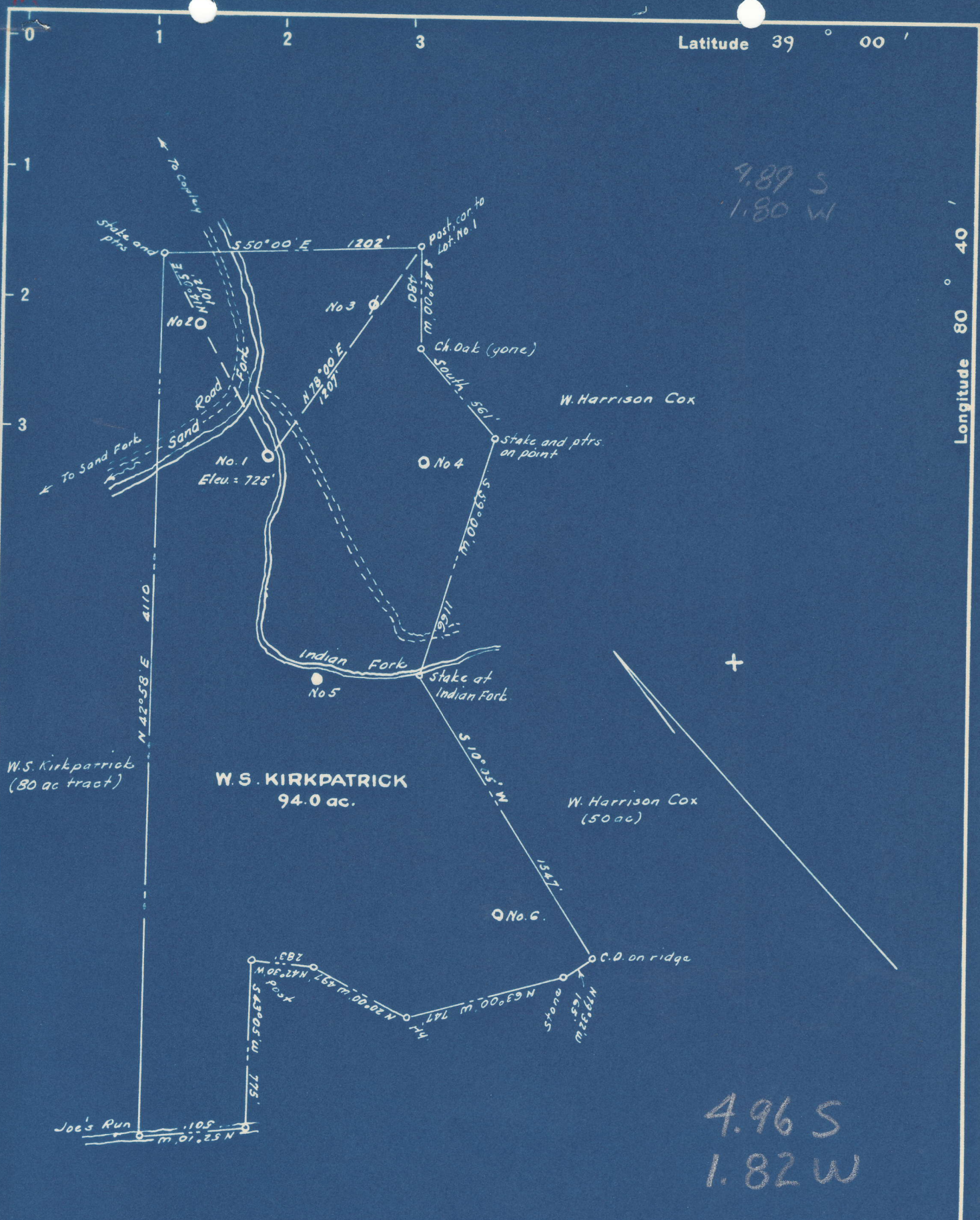


Latitude 39° 00'

Longitude 80° 40'

4.89 S
1.80 W



- New Location...
- Drill Deeper...
- Abandonment...

Company J. O. BOYLE

Address Youngwood, Pa.

Farm W. S. Kirkpatrick

Tract _____ Acres 94 Lease No. _____

Well (Farm) No. One Serial No. _____

Elevation (Spirit Level) 725'

Quadrangle Burnsville

County Gilmer District Glenville

Engineer Wesley J.

Engineer's Registration No. 1227

File No. _____ Drawing No. _____

Date July, 1948 Scale 1" = 600'

STATE OF WEST VIRGINIA
DEPARTMENT OF MINES
OIL AND GAS DIVISION
CHARLESTON

WELL LOCATION MAP
FILE NO. GIL-305-A

+ Denotes location of well on United States Topographic Maps, scale 1 to 62,500, latitude and longitude lines being represented by border lines as shown.

- Denotes one inch spaces on border line of original tracing.

Glenville.....District, Gilmer County, W. Va.
South Penn Oil Co.

(Original record stated "near Gilmer line near line of Glenville
District"), but well is in Gilmer County.

	Top.	Bottom.
Pittsburgh Coal		None
Dunkard Sand	830	- 880
Salt Sand	1570	- 1650
Pencil Cave	1805	- 1810
Lime	1810	- 1900
Big Injun Sand	1900	- 2125
Stray Sand	2445	- 2450
Gordon Sand	2465	- 2469
5th Sand (oil, 2621')	2680	- 2690
Total depth		2723