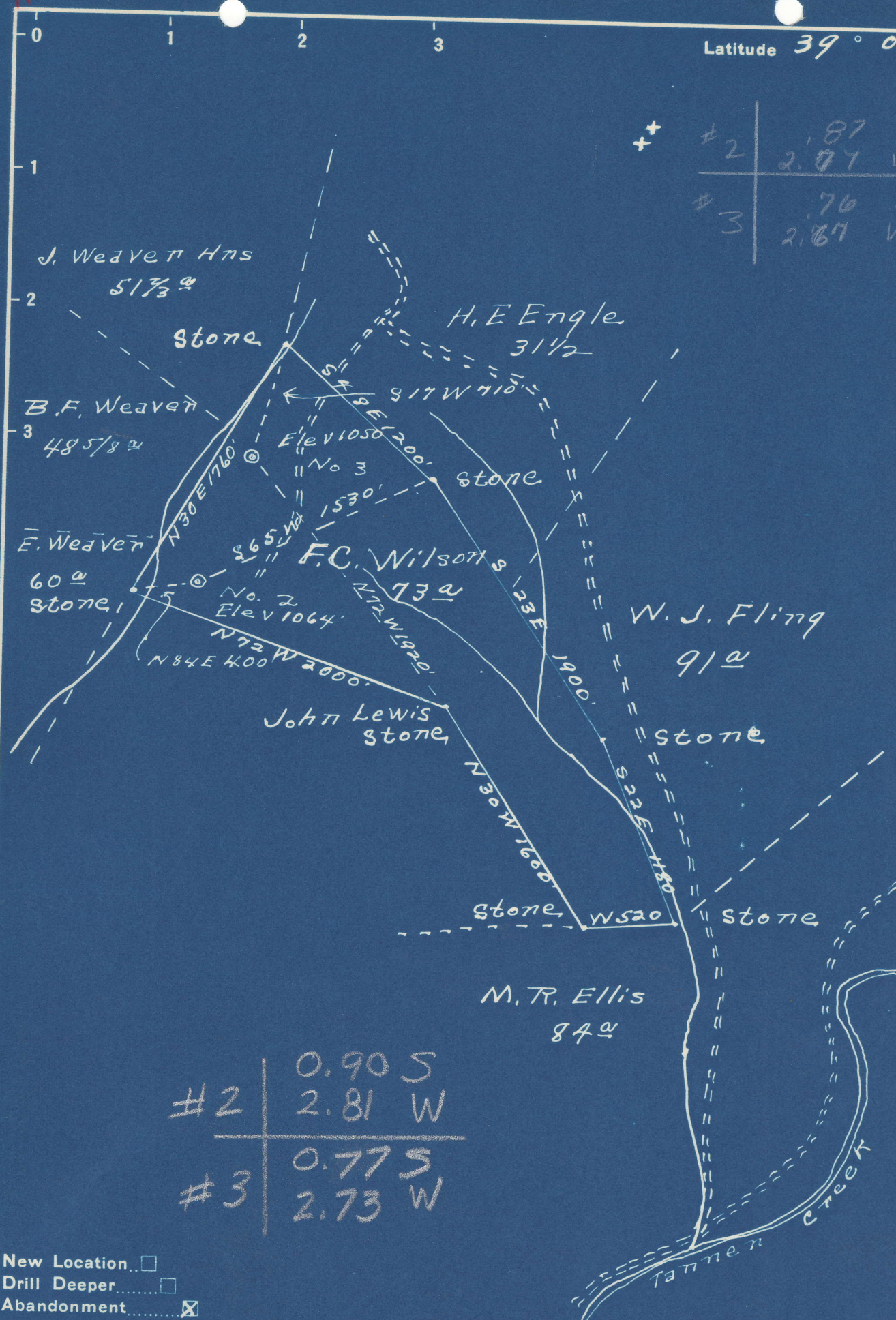


Latitude 39° 00'

Longitude 80° 55'

#2	1.87 S
	2.87 W
#3	0.76 S
	2.67 W



#2	0.90 S
	2.81 W
#3	0.77 S
	2.73 W

- New Location
- Drill Deeper
- Abandonment

Company Leonard Cain  
 Address Grantsville, W. Va.  
 Farm F. C. Wilson  
 Tract \_\_\_\_\_ Acres 73 Lease No. \_\_\_\_\_  
 Well (Farm) No. 2-3 Serial No. \_\_\_\_\_  
 Elevation (Spirit Level) 1064-1050'  
 Quadrangle Glennville  
 County Bilmen District De Kalb  
 Engineer Donald W. Morris  
 Engineer's Registration No. 1653  
 File No. \_\_\_\_\_ Drawing No. \_\_\_\_\_  
 Date 12-4-48 Scale 1" = 800'

STATE OF WEST VIRGINIA  
 DEPARTMENT OF MINES  
 OIL AND GAS DIVISION  
 CHARLESTON

**WELL LOCATION MAP**

FILE NO. GIL-308-A-#2  
GIL-309-A-#3

- + Denotes location of well on United States Topographic Maps, scale 1 to 62,500, latitude and longitude lines being represented by border lines as shown.
- Denotes one inch spaces on border line of original tracing.