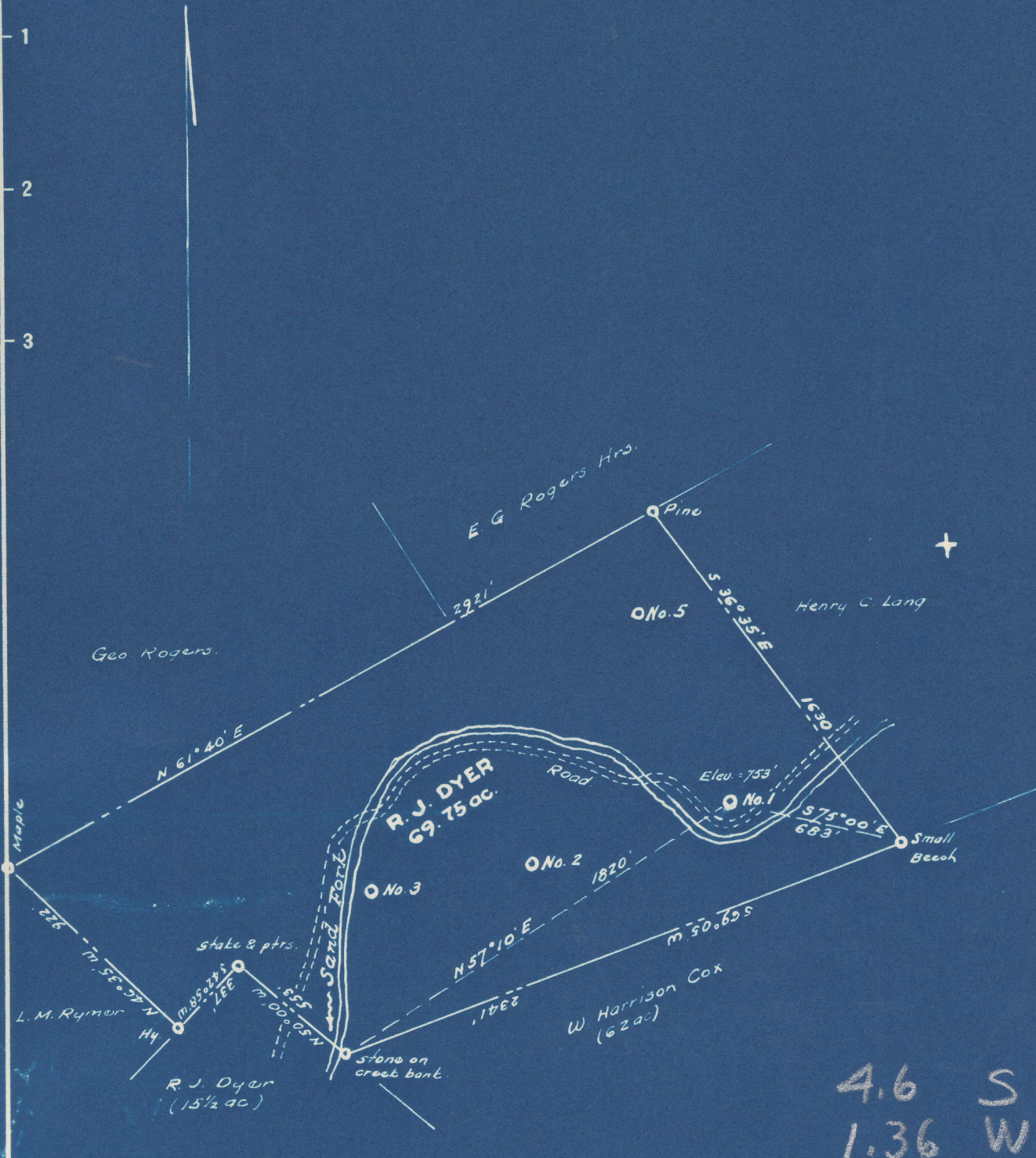


Latitude 00

4,52 S  
1,32 W

Longitude 80 40



4.6 S  
1.36 W

New Location   
 Drill Deeper   
 Abandonment

Company J. O. BOYLE  
 Address Youngwood, Pa.  
 Farm R. J. Dyer  
 Tract \_\_\_\_\_ Acres 69.75 Lease No. \_\_\_\_\_  
 Well (Farm) No. One Serial No. \_\_\_\_\_  
 Elevation (Spirit Level) 753'  
 Quadrangle Burnsville  
 County Gilmer District Glenville  
 Engineer W. H. Hester  
 Engineer's Registration No. 1227  
 File No. \_\_\_\_\_ Drawing No. \_\_\_\_\_  
 Date July, 1948 Scale 1" = 600'

STATE OF WEST VIRGINIA  
 DEPARTMENT OF MINES  
 OIL AND GAS DIVISION  
 CHARLESTON

**WELL LOCATION MAP**  
 FILE NO. GIL-321-A #1

+ Denotes location of well on United States Topographic Maps, scale 1 to 62,500, latitude and longitude lines being represented by border lines as shown.  
 - Denotes one inch spaces on border line of original tracing.

"IMPERIAL" TRACING CLOTH  
 K & E CO., N. Y.

R. J. DYER NO. 1 WELL.

Glenville District, Gilmer County, W. Va.  
By Martin Glick, Camden Hotel, Weston, W. Va.  
Abandoned under permit Gil-321-A?

On.....acres.

Elevation, .....' L.

Drilling completed Dec. 3, 1901.

6<sup>5</sup>/<sub>8</sub>" casing, 1890'. No coal was encountered.

Oil well. Record to Dept. of Mines stamped June 11, 1951.

Record to RCT from Dept. of Mines (Mrs. Griffith) July 9, 1952. O.F.No.493.

	Top.	Bottom.
Dunkard Sand	640	- 680
Salt Sand	1360	<del>min</del> 1420
Maxton Sand	1630	- 1660
Big Lime	1775	- 1830
Big Injun Sand	1830	- 2000
Gordon Sand	2498	- 2560
Fifth Sand (oil, 2687')	2684	- 2691
Total depth		2728



493

STATE OF WEST VIRGINIA  
DEPARTMENT OF MINES  
OIL AND GAS DIVISION

WELL RECORD

Permit No. GIL-321-A

Oil or Gas Well \_\_\_\_\_  
(KIND)

Company Martin Glick  
 Address Camden Hotel, Weston, W. Va.  
 Farm R. J. Dyer Acres \_\_\_\_\_  
 Location (waters) \_\_\_\_\_  
 Well No. One Elev. \_\_\_\_\_  
 District Glenville County Gilmer  
 The surface of tract is owned in fee by \_\_\_\_\_  
 Address \_\_\_\_\_  
 Mineral rights are owned by \_\_\_\_\_  
 Address \_\_\_\_\_  
 Drilling commenced \_\_\_\_\_  
 Drilling completed 12/3/1901  
 Date Shot From \_\_\_\_\_ To \_\_\_\_\_  
 With \_\_\_\_\_

Casing and Tubing	Used in Drilling	Left in Well	Packers
Size			
16			Kind of Packer
13			
10			Size of
8 1/4			
6 5/8		1890	Depth set
5 3/16			
3			Perf. top
2			Perf. bottom
Liners Used			Perf. top
			Perf. bottom

Open Flow /10ths Water in \_\_\_\_\_ Inch  
 /10ths Merc. in \_\_\_\_\_ Inch  
 Volume \_\_\_\_\_ Cu. Ft.  
 Rock Pressure \_\_\_\_\_ lbs. \_\_\_\_\_ hrs.  
 Oil \_\_\_\_\_ bbls., 1st 24 hrs.  
 Fresh water \_\_\_\_\_ feet \_\_\_\_\_ feet  
 Salt water \_\_\_\_\_ feet \_\_\_\_\_ feet

CASING CEMENTED \_\_\_\_\_ SIZE \_\_\_\_\_ No. Ft. \_\_\_\_\_ Date \_\_\_\_\_  
 COAL WAS ENCOUNTERED AT \_\_\_\_\_ FEET \_\_\_\_\_ INCHES  
 \_\_\_\_\_ FEET \_\_\_\_\_ INCHES FEET \_\_\_\_\_ INCHES  
 \_\_\_\_\_ FEET \_\_\_\_\_ INCHES FEET \_\_\_\_\_ INCHES

Formation	Color	Hard or Soft	Top	Bottom	Oil, Gas or Water	Depth Found	Remarks
No Coal.							
Dunkard Sand			640	680			
Salt	"		1360	1420			
Maxon	"		1630	1660			
Big Lime			1775	1830			
Big Injun			1830	2000			
Gordon			2498	2560			
Fifth			2684	2691	Oil	2687	
Total Depth				2728			

