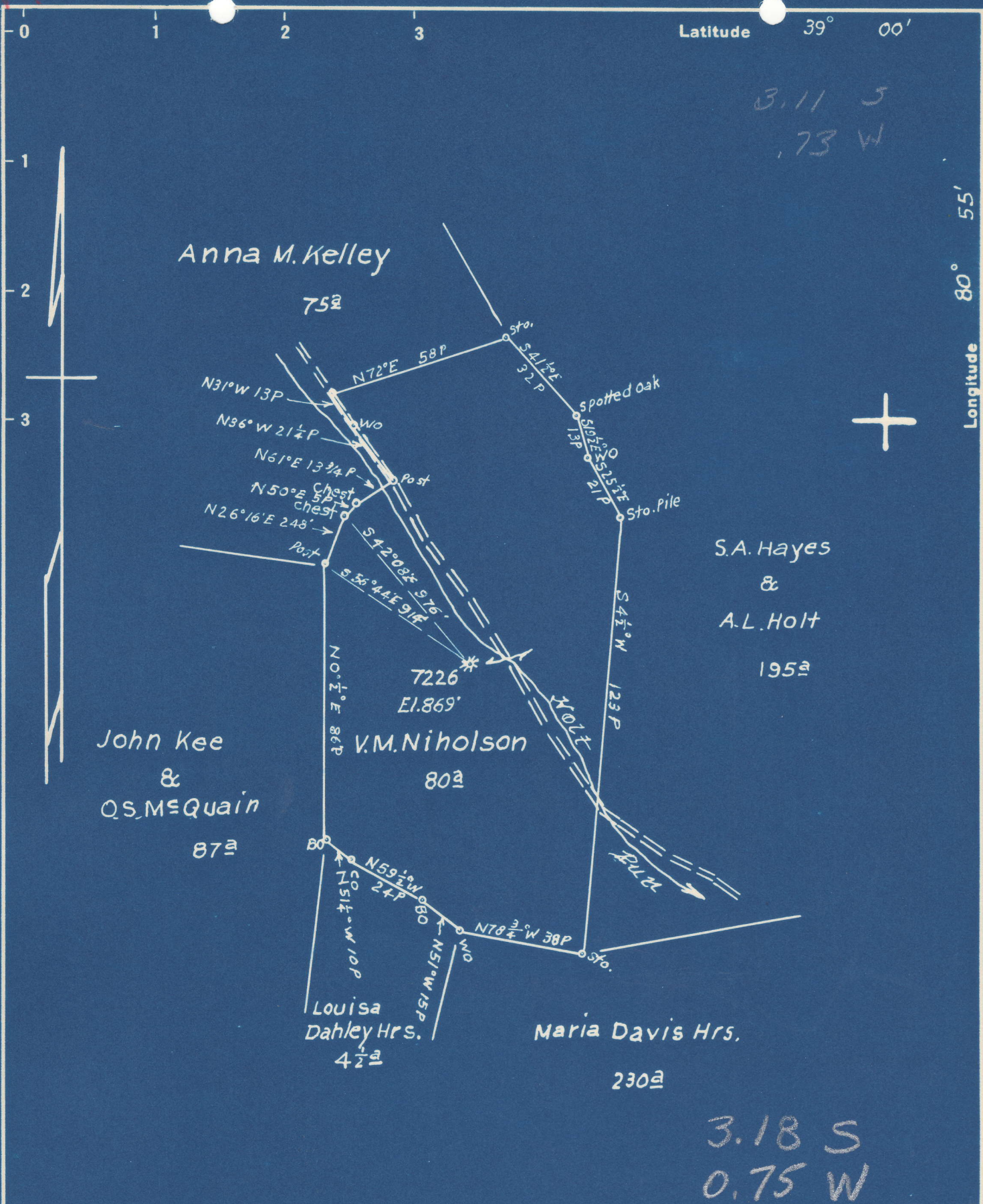


Latitude 39° 00'

3.11 S  
.73 W

Longitude 80° 55'



S.A. Hayes  
&  
A.L. Holt  
195a

John Kee  
&  
O.S.M. Quain  
87a

V.M. Nicholson  
80a

Louisa  
Dahley Hrs.  
4 1/2a

Maria Davis Hrs.  
230a

3.18 S  
0.75 W

- New Location
- Drill Deeper
- Abandonment

Map Sh. 87 S34 W19 FB 922 P-15.

Company Hope Natural Gas Co.  
 Address Clarksburg, W. Va.  
 Farm V.M. Nicholson  
 Tract \_\_\_\_\_ Acres 80 Lease No. 42015  
 Well (Farm) No. \_\_\_\_\_ Serial No. 7226  
 Elevation (Spirit Level) 869'  
 Quadrangle Glenville  
 County Gilmer District DeKalb  
 Engineer W.M. Powers  
 Engineer's Registration No. 900  
 File No. \_\_\_\_\_ Drawing No. \_\_\_\_\_  
 Date 2-3-49 Scale 1" = 40P.

STATE OF WEST VIRGINIA  
DEPARTMENT OF MINES  
OIL AND GAS DIVISION  
CHARLESTON

### WELL LOCATION MAP

FILE NO. GIL-324-A

- + Denotes location of well on United States Topographic Maps, scale 1 to 62,500, latitude and longitude lines being represented by border lines as shown.
- Denotes one inch spaces on border line of original tracing.