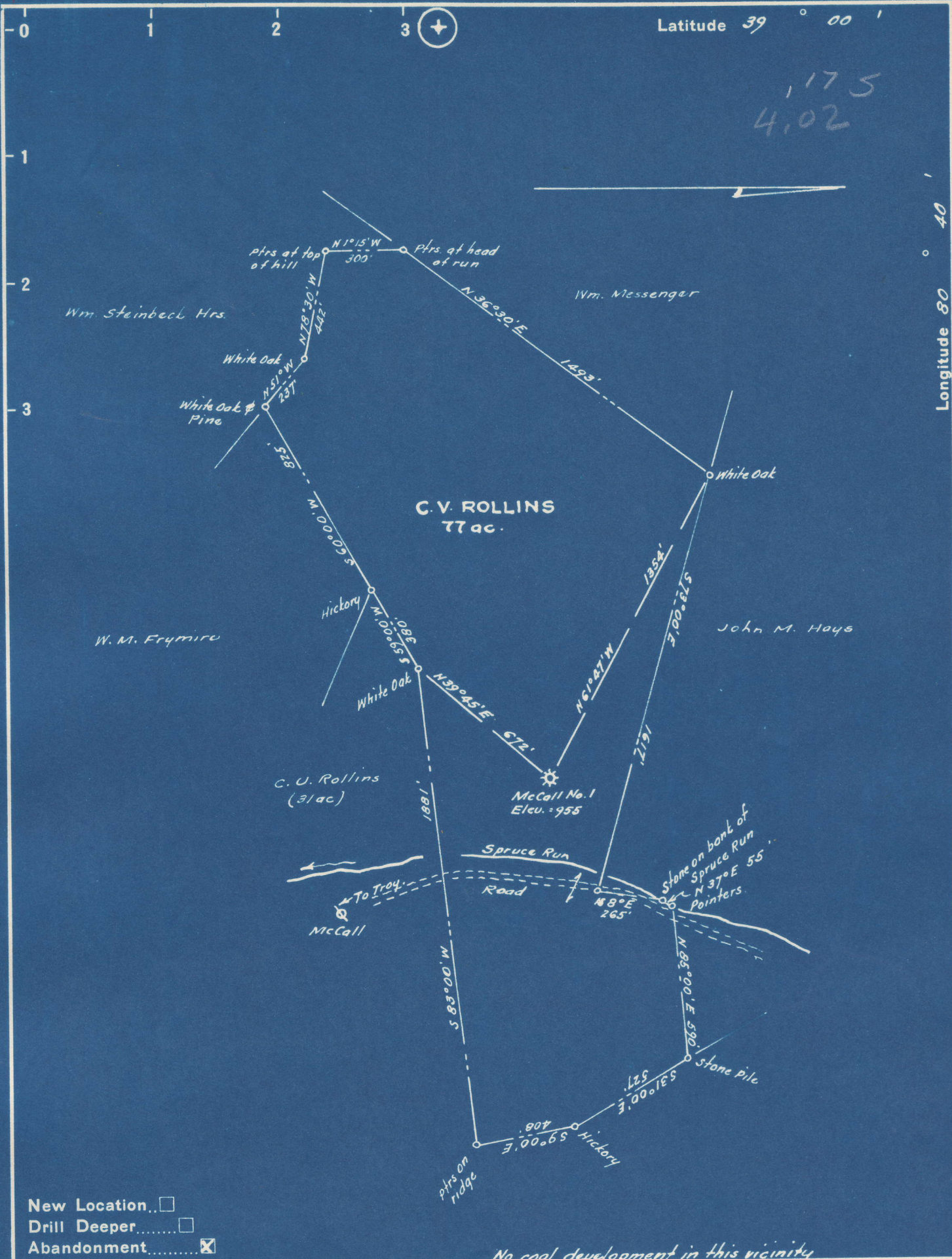


Latitude 39° 00'

175  
4.02

Longitude 80° 40'



- New Location...
- Drill Deeper.....
- Abandonment.....

No coal development in this vicinity

Company McCALL DRILLING CO.  
 Address 612 Keystone Bldg. Pittsburgh, Pa.  
 Farm C. V. Rollins  
 Tract \_\_\_\_\_ Acres 77.0 Lease No. \_\_\_\_\_  
 Well (Farm) No. One Serial No. 1-24  
 Elevation (Spirit Level) 955'  
 Quadrangle Burnsville  
 County Gilmer District Troy  
 Engineer W. H. J. [Signature]  
 Engineer's Registration No. 1227  
 File No. \_\_\_\_\_ Drawing No. \_\_\_\_\_  
 Date May, 1950 Scale 1" = 500

STATE OF WEST VIRGINIA  
 DEPARTMENT OF MINES  
 OIL AND GAS DIVISION  
 CHARLESTON

WELL LOCATION MAP  
 FILE NO. GIL-353-A

+ Denotes location of well on United States Topographic Maps, scale 1 to 62,500, latitude and longitude lines being represented by border lines as shown.

- Denotes one inch spaces on border line of original tracing.