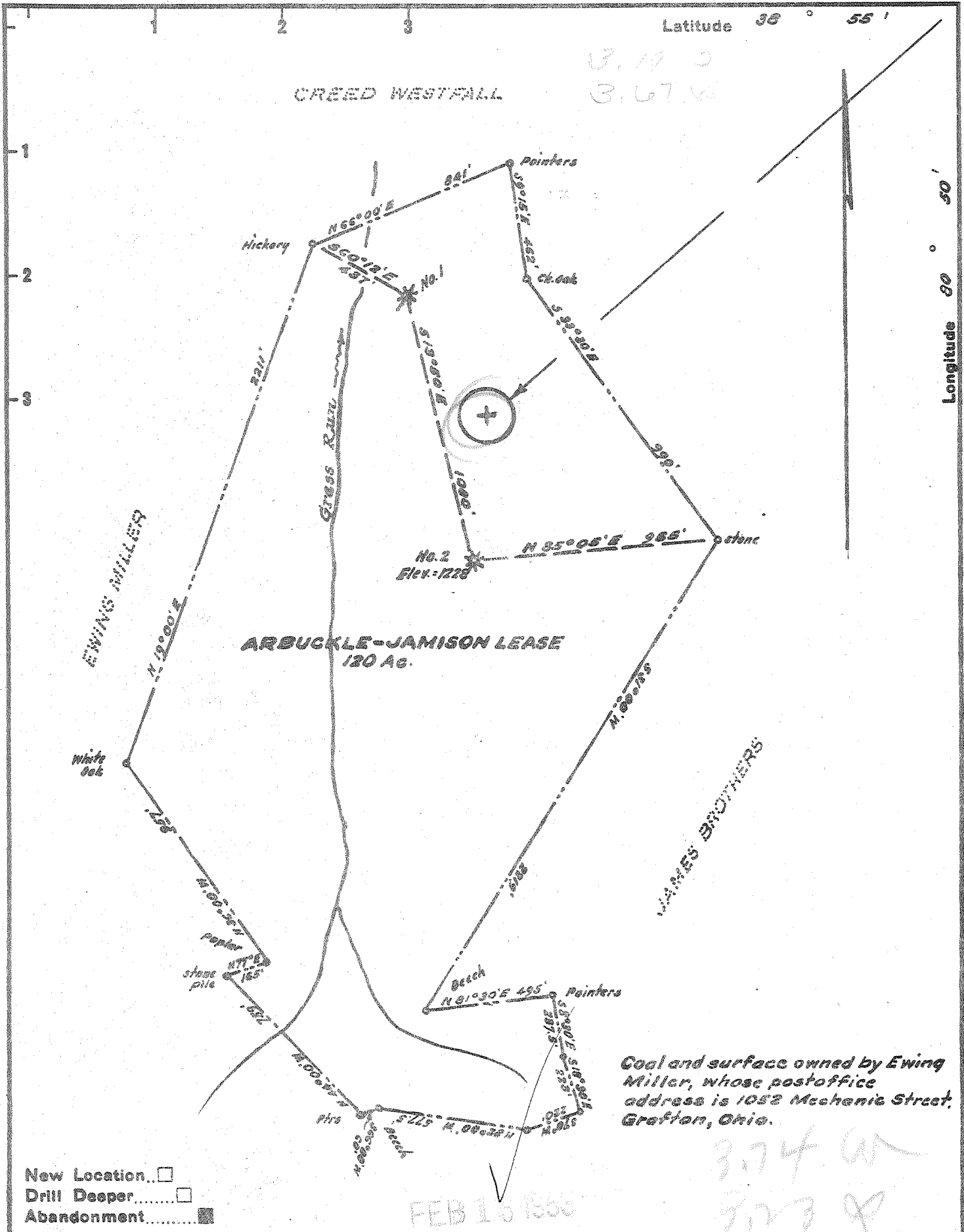


m



Company MCCALL DRILLING COMPANY
 Address 612 Keystone Bldg., Pittsburgh, Penna.
 Farm Arbuckle - Jamison Lease
 Tract _____ Acres 120 Lease No. _____
 Well (Farm) No. Two Serial No. 2-6
 Elevation (Spirit Level) 1228
 Quadrangle Glenville
 County Gilmer District Center
 Engineer W. H. Blair
 Engineer's Registration No. 1227
 File No. _____ Drawing No. _____
 Date January 1953 Scale 1" = 500'

STATE OF WEST VIRGINIA
 DEPARTMENT OF MINES
 OIL AND GAS DIVISION
 CHARLESTON

WELL LOCATION MAP
 FILE NO. GIL-400-A

+ Denotes location of well on United States Topographic Maps, scale 1 to 62,500, latitude and longitude lines being represented by border lines as shown.
 - Denotes one inch spaces on border line of original tracing.