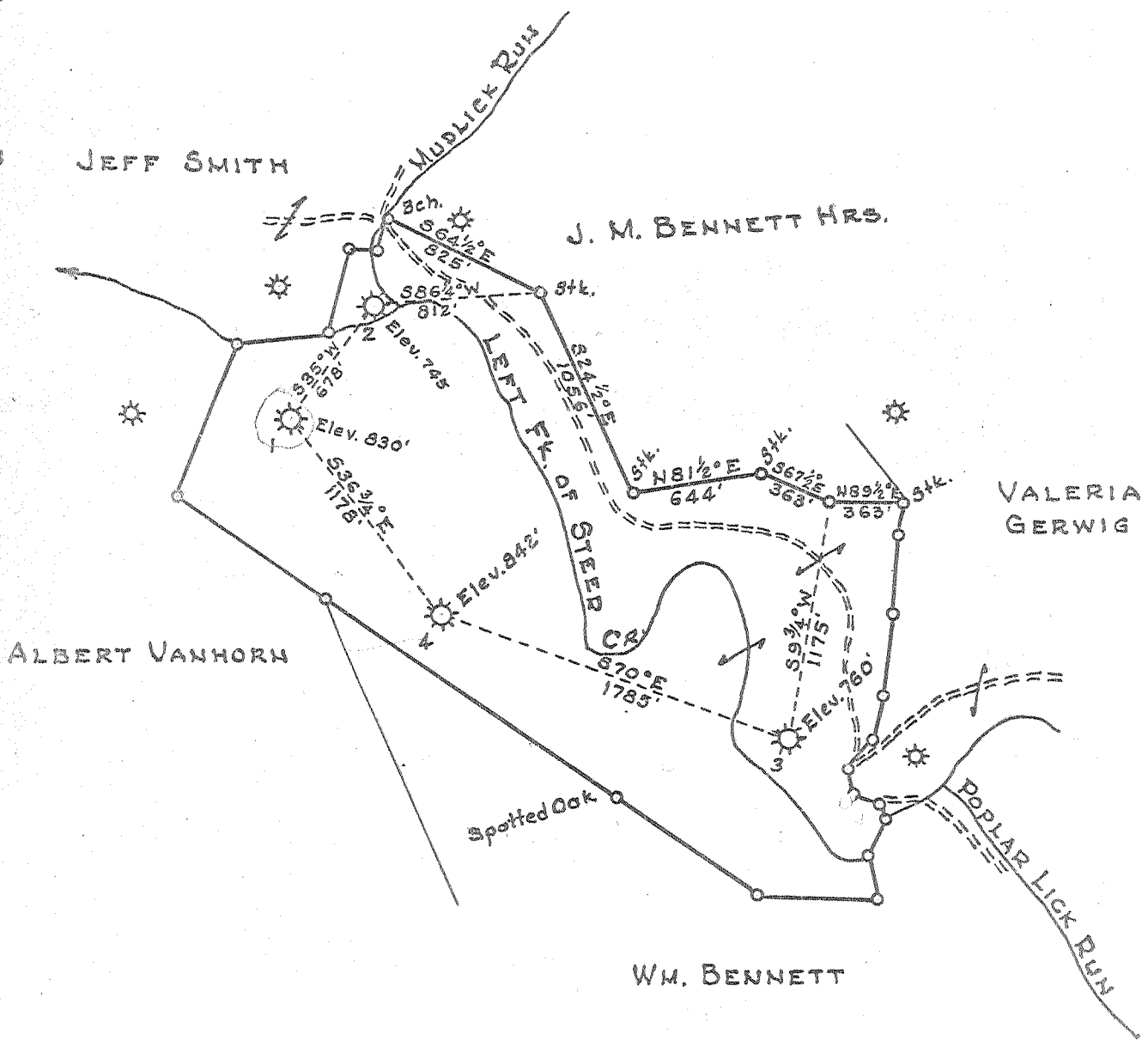
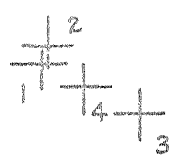


Latitude 38° 50'

Longitude 80° 50'

| | |
|-----|--------|
| # 2 | 0.80 S |
| | 4.1 W |
| # 3 | 1.15 S |
| | 3.62 W |
| # 4 | 1.00 S |
| | 3.92 W |



- New Location
- Drill Deeper
- Abandonment

| | |
|-----------------------------|--|
| Company | Bland & Tompkins |
| Address | Charleston W. Va. |
| Farm | Artie Coberly |
| Tract | Acres 110 Lease No. 3750, 3751, 3752, 3753 |
| Well (Farm) No. | 1, 2, 3 & 4 Serial No. 3752, 3753 |
| Elevation (Spirit Level) | As Shown |
| Quadrangle | Glennville |
| County | Gilmer District Center |
| Engineer | P. E. Joachim |
| Engineer's Registration No. | 669 |
| File No. | 100-91 Drawing No. |
| Date | Sept. 30, 1954 Scale 1" = 800' |

STATE OF WEST VIRGINIA
DEPARTMENT OF MINES
OIL AND GAS DIVISION
CHARLESTON

WELL LOCATION MAP
GIL-418-A-#2
FILE NO. GIL-419-A-#3
GIL-420-A-#4

- + Denotes location of well on United States Topographic Maps, scale 1 to 62,500, latitude and longitude lines being represented by border lines as shown.
- Denotes one inch spaces on border line of original tracing.



STATE OF WEST VIRGINIA
DEPARTMENT OF MINES
OIL AND GAS DIVISION

524

Quadrangle _____

WELL RECORD

Permit No. 419A

Oil or Gas Well _____ (KIND)

Company BLAND AND TOMPKINS
Address P. O. BOX 1787 - Charleston, W. Va.
Farm Artie Coberly Acres 110
Location (waters) Left Fork of Steer Creek
Well No. 3 (3752) Elev. 760'
District Center County Gilmer
The surface of tract is owned in fee by _____
Address _____
Mineral rights are owned by _____
Address _____

| Casing and Tubing | Used in Drilling | Left in Well | Packers |
|-------------------|------------------|--------------|------------------------|
| Size | | | Kind of Packer |
| 16 | | | |
| 13 | | | <u>Heater Special</u> |
| 10 | <u>180'</u> | <u>40</u> | Size of |
| 8 1/4 | <u>727'</u> | <u>727'</u> | <u>8-522</u> |
| 6 5/8 | <u>1578'</u> | <u>40</u> | Depth set <u>1525'</u> |
| 5 3/16 | | | |
| 3 | | | Perf. top |
| 2 | | | Perf. bottom |
| Liners Used | | | Perf. top |
| | | | Perf. bottom |

Drilling commenced January 3, 1925
Drilling completed February 12, 1925
Date Shot not shot From _____ To _____
With _____
Open Flow 12 /10ths Water in 3" Inch
_____ /10ths Merc. in _____ Inch
Volume _____ Cu. Ft.
Rock Pressure 405 lbs. _____ hrs.
Oil _____ bbls., 1st 24 hrs.
Fresh water _____ feet _____ feet
Salt water _____ feet _____ feet

CASING CEMENTED _____ SIZE _____ No. Ft. _____ Date _____

COAL WAS ENCOUNTERED AT _____ FEET _____ INCHES
_____ FEET _____ INCHES _____ FEET _____ INCHES
_____ FEET _____ INCHES _____ FEET _____ INCHES

| Formation | Color | Hard or Soft | Top | Bottom | Oil, Gas or Water | Depth Found | Remarks |
|------------------|-------|--------------|-------------|-------------|---|--------------------|---------|
| Red Rock & Slate | | | | <u>415</u> | <u>Water 60'</u> | <u>160' - 480'</u> | |
| Big Dunkard | | | <u>415</u> | <u>525</u> | | | |
| Slate & Shells | | | <u>525</u> | <u>595</u> | | | |
| Gas Sand | | | <u>595</u> | <u>665</u> | | | |
| Slate | | | <u>665</u> | <u>670</u> | | | |
| 1st Salt Sand | | | <u>670</u> | <u>695</u> | | | |
| Slate | | | <u>695</u> | <u>760</u> | | | |
| 2nd Salt Sand | | | <u>760</u> | <u>830</u> | | | |
| Slate | | | <u>830</u> | <u>860</u> | | | |
| Sand | | | <u>860</u> | <u>910</u> | | | |
| Slate | | | <u>910</u> | <u>915</u> | | | |
| Sand | | | <u>915</u> | <u>945</u> | | | |
| Slate | | | <u>945</u> | <u>965</u> | | | |
| Sand | | | <u>965</u> | <u>1100</u> | | | |
| Slate | | | <u>1100</u> | <u>1150</u> | | | |
| 3rd Salt Sand | | | <u>1150</u> | <u>1225</u> | <u>Gas 1190'</u> | | |
| Slate | | | <u>1225</u> | <u>1235</u> | | | |
| Sand | | | <u>1235</u> | <u>1270</u> | | | |
| Slate | | | <u>1270</u> | <u>1375</u> | | | |
| Red Rock | | | <u>1375</u> | <u>1425</u> | | | |
| Maxon Sand | | | <u>1425</u> | <u>1482</u> | <u>Water & show of Oil at 1455'</u> | | |
| Slate | | | <u>1482</u> | <u>1498</u> | | | |
| Lime | | | <u>1498</u> | <u>1520</u> | | | |
| Slate | | | <u>1520</u> | <u>1524</u> | | | |
| Little Lime | | | <u>1524</u> | <u>1542</u> | | | |
| Pencil Cave | | | <u>1542</u> | <u>1550</u> | | | |
| Big Lime | | | <u>1550</u> | <u>1610</u> | | | |
| Big Injun Sand | | | <u>1610</u> | <u>1725</u> | <u>Show of gas at 1676'</u> | | |
| Slate | | | <u>1725</u> | <u>1730</u> | <u>" " " " 1701'</u> | | |
| Total Depth | | | | <u>1730</u> | | | |

First filled up to 1225' and later filled up to 1214'

Pay in third Salt Sand 1175-1195
Dry in Injun Sand

AUG 12 1955

