

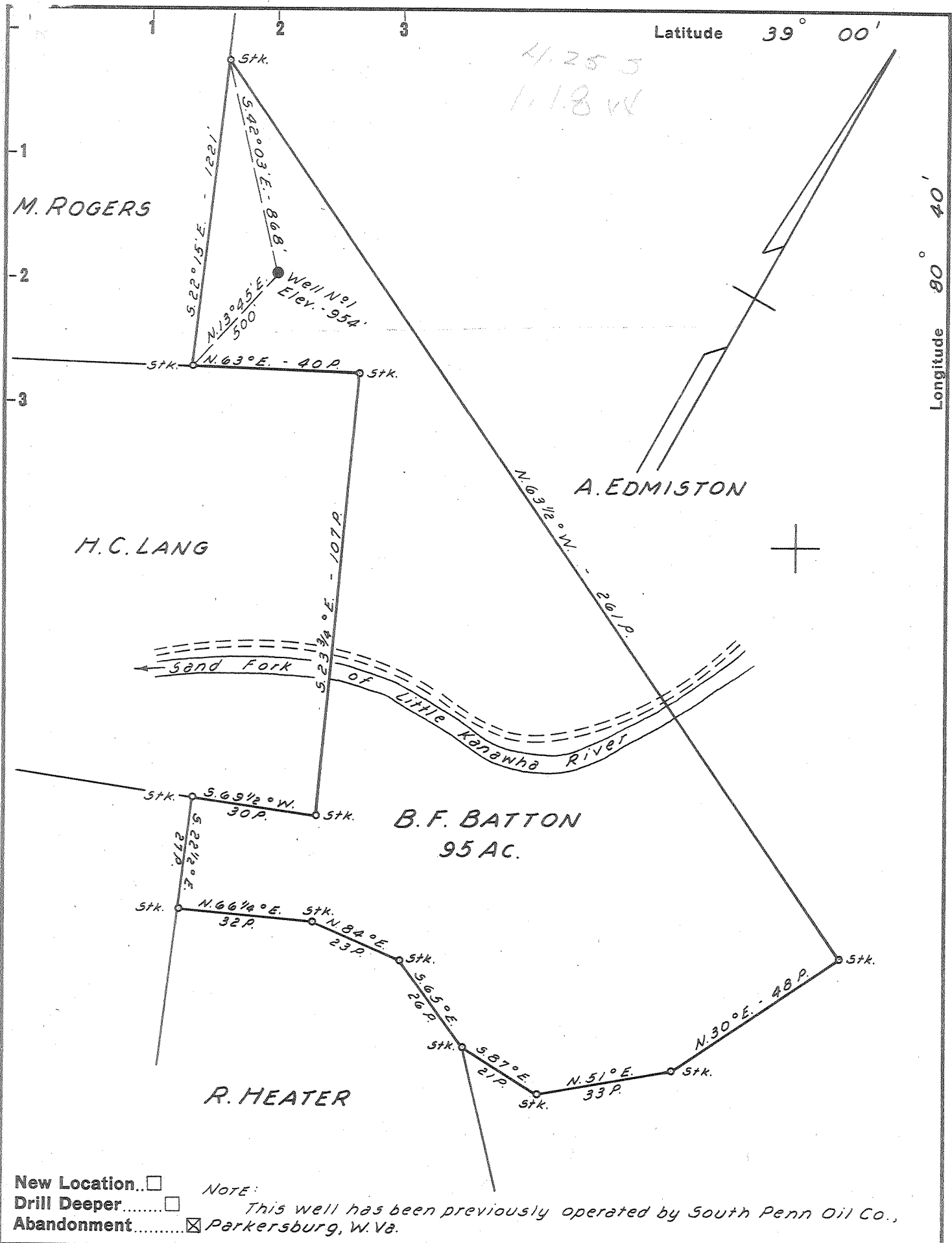
New Location...  Note: This well has been previously operated by South Penn Oil Co.,  
 Drill Deeper.....  Parkersburg, W. Va.  
 Abandonment.....

Company RICHARD JACKSON INC.  
 Address 614 EAST MAIN ST. CLARKSBURG, W. VA.  
 Farm B.F. BATTON  
 Tract \_\_\_\_\_ Acres 95 Lease No. \_\_\_\_\_  
 Well (Farm) No. 1 Serial No. \_\_\_\_\_  
 Elevation (Spirit Level) 954'  
 Quadrangle BURNSVILLE  
 County GILMER District GLENNVILLE  
 Engineer JOHN W. HAMILTON  
 Engineer's Registration No. 2274  
 File No. \_\_\_\_\_ Drawing No. \_\_\_\_\_  
 Date OCT. 30, 1960 Scale 1" = 30 POLES

STATE OF WEST VIRGINIA  
 DEPARTMENT OF MINES  
 OIL AND GAS DIVISION  
 CHARLESTON *Corrected*

**WELL LOCATION MAP**  
 FILE NO. GIL-455-A

+ Denotes location of well on United States Topographic Maps, scale 1 to 62,500, latitude and longitude lines being represented by border lines as shown.  
 - Denotes one inch spaces on border line of original tracing.



New Location...  NOTE: This well has been previously operated by South Penn Oil Co.,  
 Drill Deeper.....  Parkersburg, W. Va.  
 Abandonment.....

Company RICHARD JACKSON INC.  
 Address 614 EAST MAIN ST. CLARKSBURG, W. VA.  
 Farm B.F. BATTON  
 Tract \_\_\_\_\_ Acres 95 Lease No. \_\_\_\_\_  
 Well (Farm) No. 1 Serial No. \_\_\_\_\_  
 Elevation (Spirit Level) 954'  
 Quadrangle BURNSVILLE  
 County GILMER District GLENVILLE  
 Engineer JOHN W. HAMILTON  
 Engineer's Registration No. 2274  
 File No. \_\_\_\_\_ Drawing No. \_\_\_\_\_  
 Date OCT. 30, 1960 Scale 1" = 30 POLES

STATE OF WEST VIRGINIA  
 DEPARTMENT OF MINES  
 OIL AND GAS DIVISION  
 CHARLESTON

**WELL LOCATION MAP**

FILE NO. GIL-454-A  
 Now 30-455A

+ Denotes location of well on United States Topographic Maps, scale 1 to 62,500, latitude and longitude lines being represented by border lines as shown.

- Denotes one inch spaces on border line of original tracing.