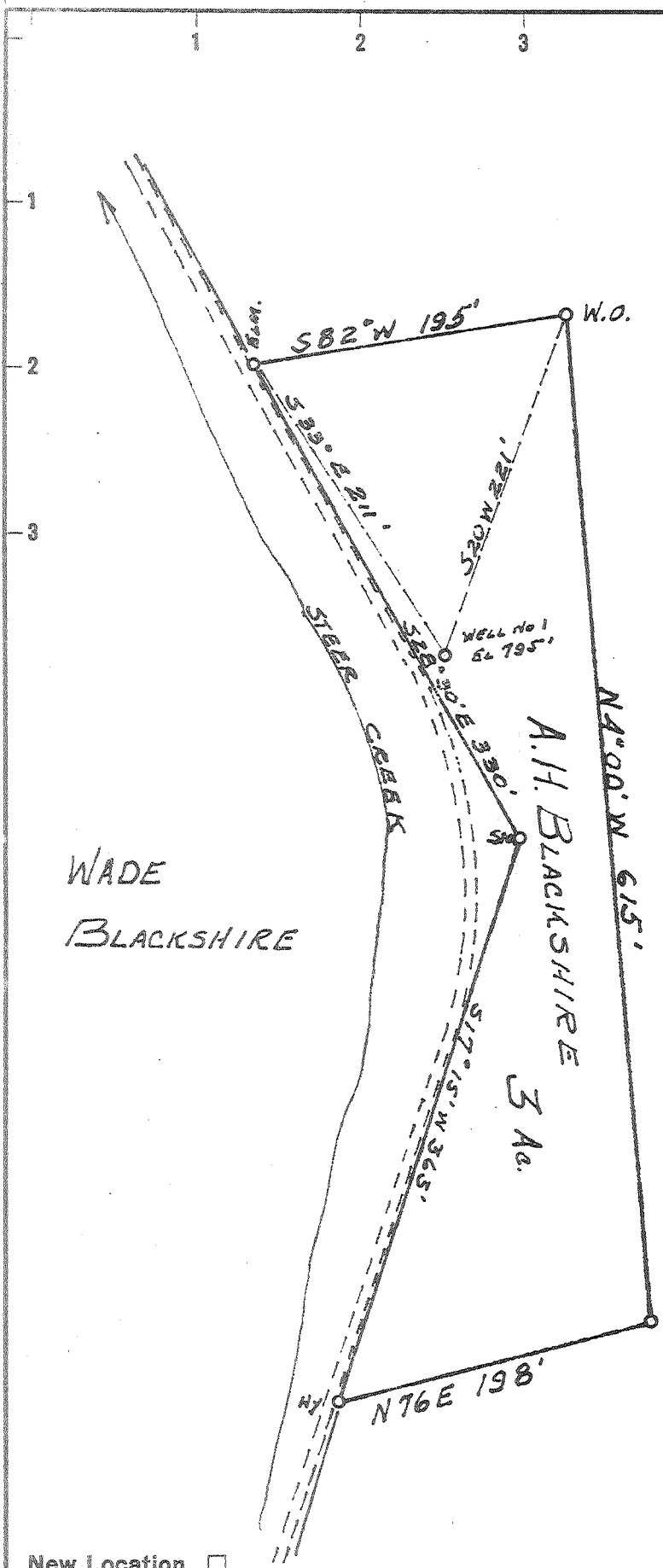


Latitude 38° 55'

5.48 S
3.27 W

Longitude 80° 55'



A.H. BLACKSHIRE

- New Location ..
- Drill Deeper
- Abandonment

Company E. M. SMITH
 Address GRANTSVILLE, W. VA.
 Farm A. H. BLACKSHIRE
 Tract _____ Acres 3 Lease No. _____
 Well (Farm) No. 1 Serial No. _____
 Elevation (Spirit Level) 795'
 Quadrangle GLENVILLE
 County GILMER District CENTER
 Engineer John W. Hamilton
 Engineer's Registration No. 2274
 File No. _____ Drawing No. _____
 Date AUGUST 18, 1915 Scale 1" = 100 FT.

STATE OF WEST VIRGINIA
 DEPARTMENT OF MINES
 OIL AND GAS DIVISION
 CHARLESTON

WELL LOCATION MAP
 FILE NO. Gib-456-A

+ Denotes location of well on United States Topographic Maps, scale 1 to 62,500, latitude and longitude lines being represented by border lines as shown.
 - Denotes one inch spaces on border line of original tracing.