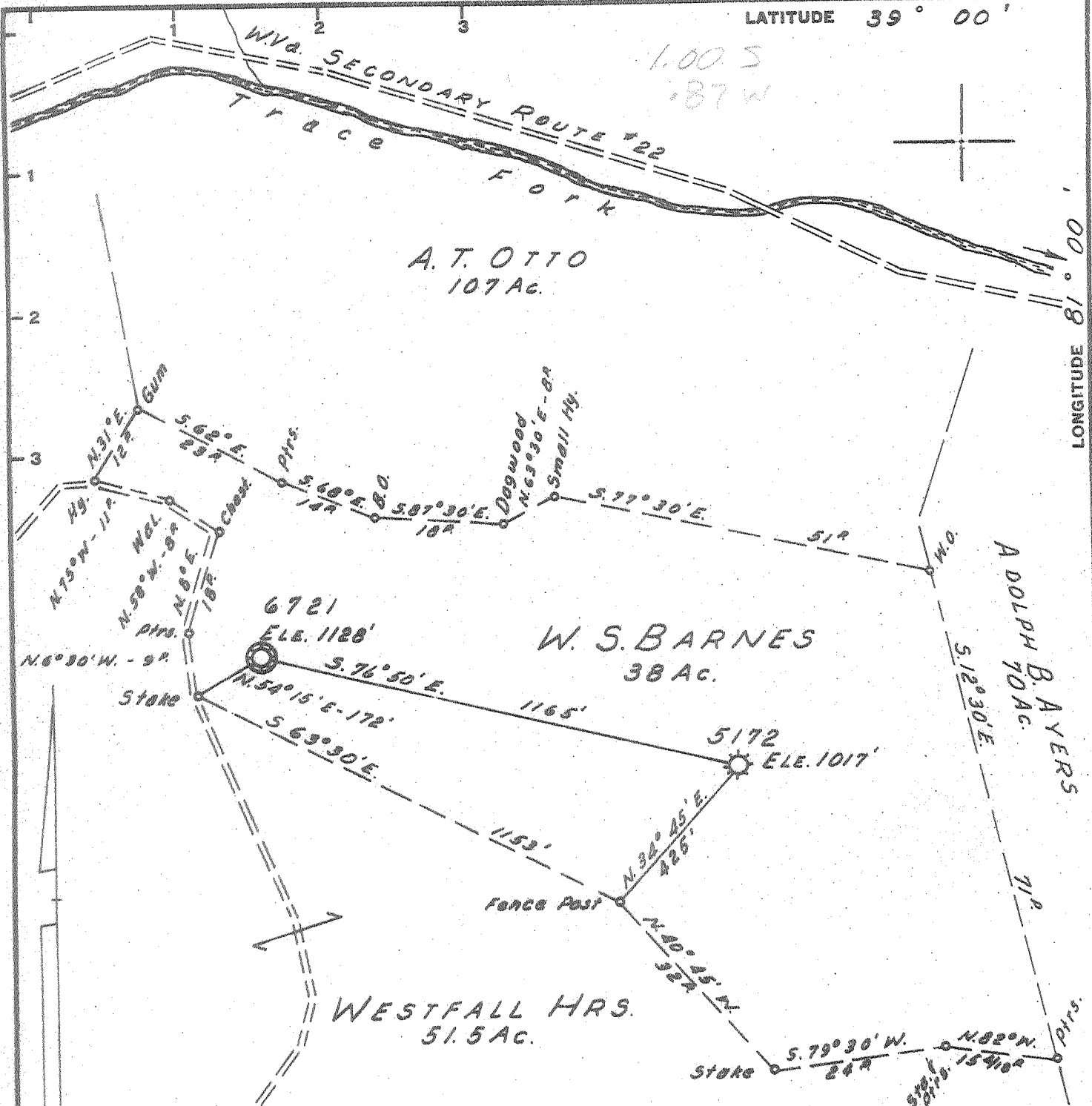


LATITUDE 39° 00'

LONGITUDE 81° 18' 00"



Minimum Error of Closure 1" IN 200'
 Source of Elevation CONSOLIDATED GAS SUPPLY CORP. WELL # 6721

"I, the undersigned, hereby certify that this map is correct to the best of my knowledge and belief and shows all the information required by paragraph 6 of the rules and regulations of the oil and gas section of the mining laws of West Virginia."

New Location
 Drill Deeper
 Abandonment

MAP SH. 88 SQ. S. 32 W. 23. F.B. 1080 P. 33.

Company	CONSOLIDATED GAS SUPPLY CORP.		
Address	CLARKSBURG, W.VA		
Farm	W. S. BARNES		
Tract	Acres	38	Lease No. 13030
Well (Farm) No.	Serial No.	5172	
Elevation (Spirit Level)	1017'		
Quadrangle	ARNOLDSBURG-NE.		
County	GILMER	District	DEKALB
Engineer	Jackson M. Jorvis		
Engineer's Registration No.	2397		
File No.	Drawing No.		
Date	Aug. 1, 1966	Scale	1" = 20 POLES

STATE OF WEST VIRGINIA
 DEPARTMENT OF MINES
 OIL AND GAS DIVISION
 CHARLESTON

WELL LOCATION MAP
 FILE NO. GIL-479-A

+ Denotes location of well on United States Topographic Maps, scale 1 to 62,500, latitude and longitude lines being represented by border lines as shown.

- Denotes one inch spaces on border line of original tracing.