

WW-7  
8-30-06



West Virginia Department of Environmental Protection  
Office of Oil and Gas  
**WELL LOCATION FORM: GPS**

API: 47-023-00024 WELL NO.: 1-2569

FARM NAME: MOOMAU

RESPONSIBLE PARTY NAME: CHESAPEAKE APPALACHIA LLC

COUNTY: GRANT DISTRICT: UNION

QUADRANGLE: BLACKBIRD KNOB, WV

SURFACE OWNER: SUEDON INVESTMENTS - WEST VIRGINIA

ROYALTY OWNER: SUEDON INVESTMENTS - WEST VIRGINIA

UTM GPS NORTHING: 4325743.317 *432 5969' COOPER EARTH*

UTM GPS EASTING: 649175.705 GPS ELEVATION: 2760'

The Responsible Party named above has chosen to submit GPS coordinates in lieu of preparing a new well location plat for a plugging permit or assigned API number on the above well. The Office of Oil and Gas will not accept GPS coordinates that do not meet the following requirements:

- Datum: NAD 1983, Zone: 17 North, Coordinate Units: meters, height above mean sea level (MSL) – meters.
- Accuracy to Datum – 3.05 meters
- Data Collection Method:  
Survey grade GPS  : Post Processed Differential   
Real-Time Differential   
Mapping Grade GPS  : Post Processed Differential   
Real-Time Differential
- Letter size copy of the topography map showing the well location.**

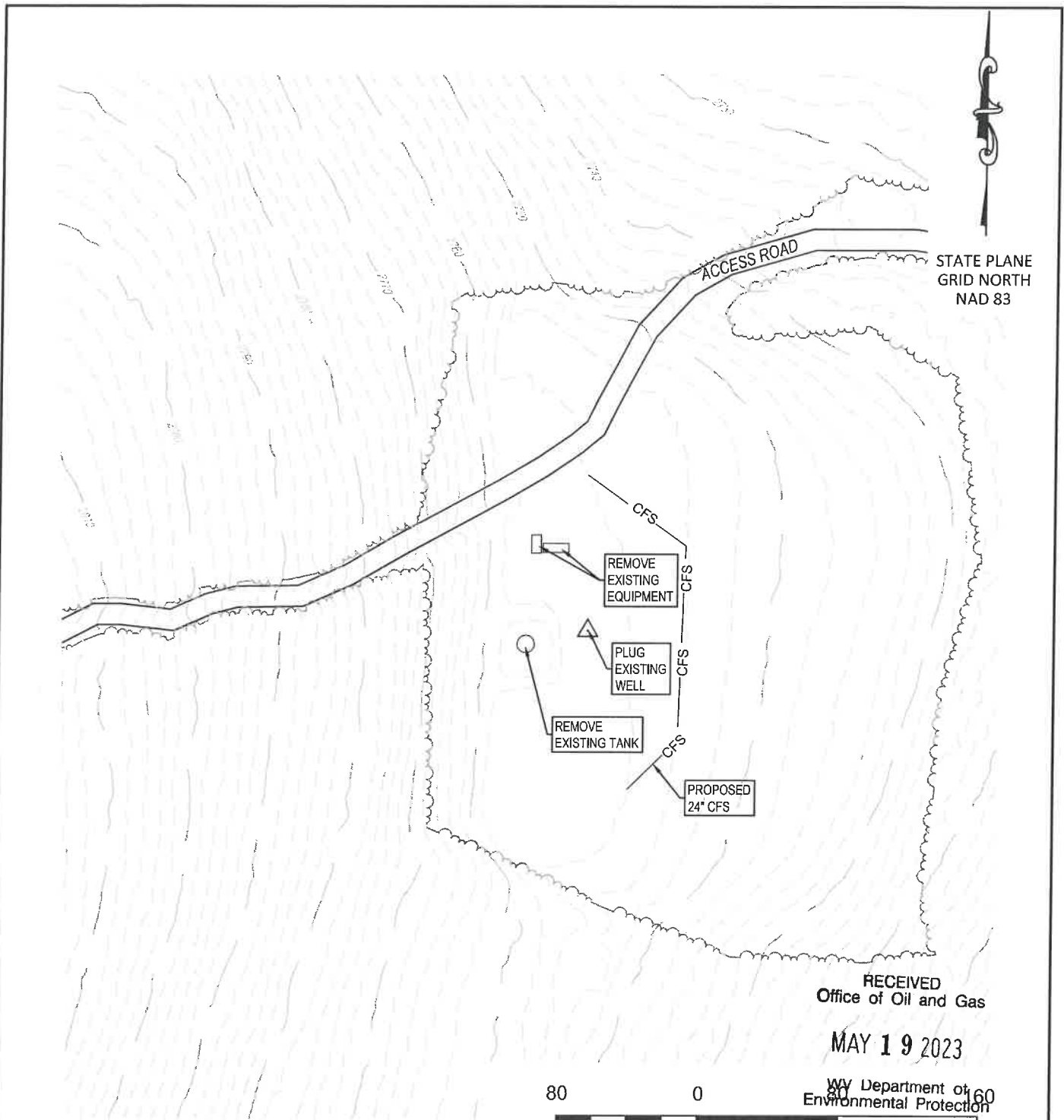
RECEIVED  
Office of Oil and Gas  
Altitude:  
**MAY 19 2023**  
WV Department of  
Environmental Protection

I the undersigned, hereby certify this data is correct to the best of my knowledge and belief and shows all the information required by law and the regulations issued and prescribed by the Office of Oil and Gas.

*Teri Leno*  
Signature

REGULATORY SPECIALIST  
Title

*5/9/23*  
Date



STATE PLANE  
GRID NORTH  
NAD 83

RECEIVED  
Office of Oil and Gas

MAY 19 2023

WV Department of Environmental Protection



SCALE IN FEET

NOTE: ALL PRODUCTION FACILITIES  
WILL BE REMOVED UPON COMPLETION  
OF THE PLUGGING OPERATIONS.

**MOOMAU 1 2569  
SITE RECLAMATION  
API# 47-023-00024**  
FOR  
**CHESAPEAKE ENERGY**  
LOCATED IN  
GRANT COUNTY, WEST VIRGINIA

LEGEND

- EXISTING CONTOUR
- EXISTING TREE LINE
- EXISTING ACCESS ROAD EDGE
- WELLHEAD
- COMPOSITE FILTER SOCK

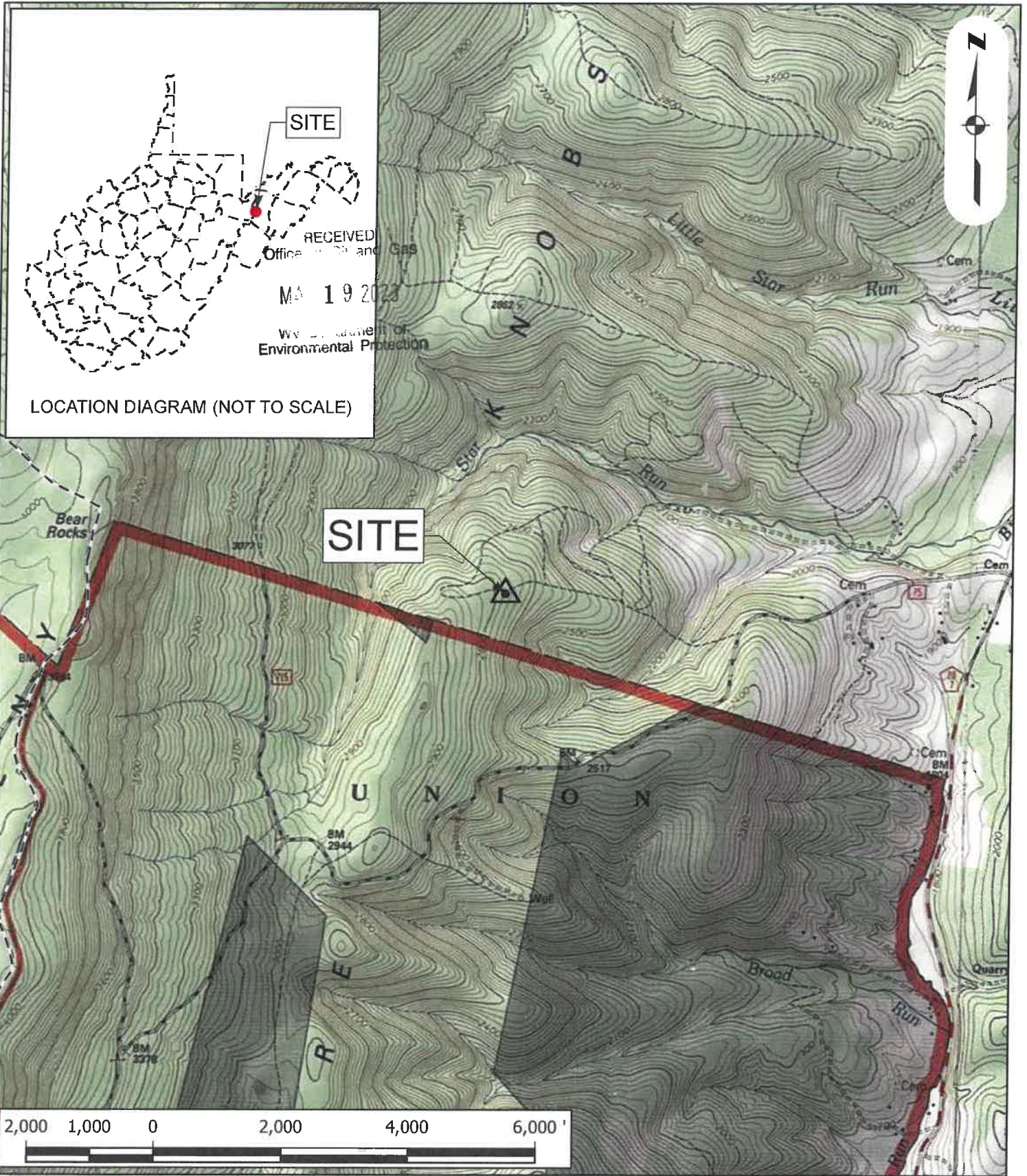
**JHA** Companies  
ENGINEERS SURVEYORS ENVIRONMENTAL GIS MAPPING  
www.jhacompanies.com

844-542-4757  
466 SOUTH MAIN STREET  
MONTROSE, PA 18801  
PA • OH • NY • WV • VA • MD

SITE PLAN

FILE NUMBER	DATE	REV.
FINAL	03/08/2022	1

07/07/2023



LOCATION DIAGRAM (NOT TO SCALE)

SITE

SITE

RECEIVED  
 Office of Oil and Gas  
 MA 19 2023  
 West Virginia Department of  
 Environmental Protection



**USGS LOCATION MAP**

PREPARED FOR

Moomau 1 2569 Site

GRANT COUNTY, WEST VIRGINIA  
BLACKBIRD KNOB USGS QUAD

PROJECT -	2023-0408 Moomau 1 2569
DATE -	3/8/2023
SCALE -	1" = 2,000'
DRAWN -	JCOOK
FILE -	MOOMAU_USGS_LOCATION_MAP.mxd



(844) 542-4757  
07/07/2023