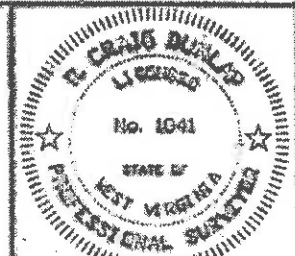


FILE NO. W10-290-1813
 DRAWING NO. W10-290-025
 SCALE 1"=1000'
 MINIMUM DEGREE OF ACCURACY 1:2500
 PROVEN SOURCE OF ELEVATION GPS
GLOBAL POSITIONING SYSTEM

I THE UNDERSIGNED, HEREBY CERTIFY THAT THIS PLAT IS CORRECT TO THE BEST OF MY KNOWLEDGE AND BELIEF AND SHOWS ALL THE INFORMATION REQUIRED BY LAW AND THE REGULATIONS ISSUED AND PRESCRIBED BY THE DIVISION OF ENVIRONMENTAL PROTECTION.

(SIGNED) R. G. Dular
 PROFESSIONAL SURVEYOR No. 1841



UNDER OFFICE OF OIL AND GAS
 1306 HANFORD ST.
 CHARLESTON, WV 25301

DATE MARCH 21, 2011
 OPERATOR'S WELL NO. PCSF 1 - 5H
 API WELL NO. 47 025 00040H

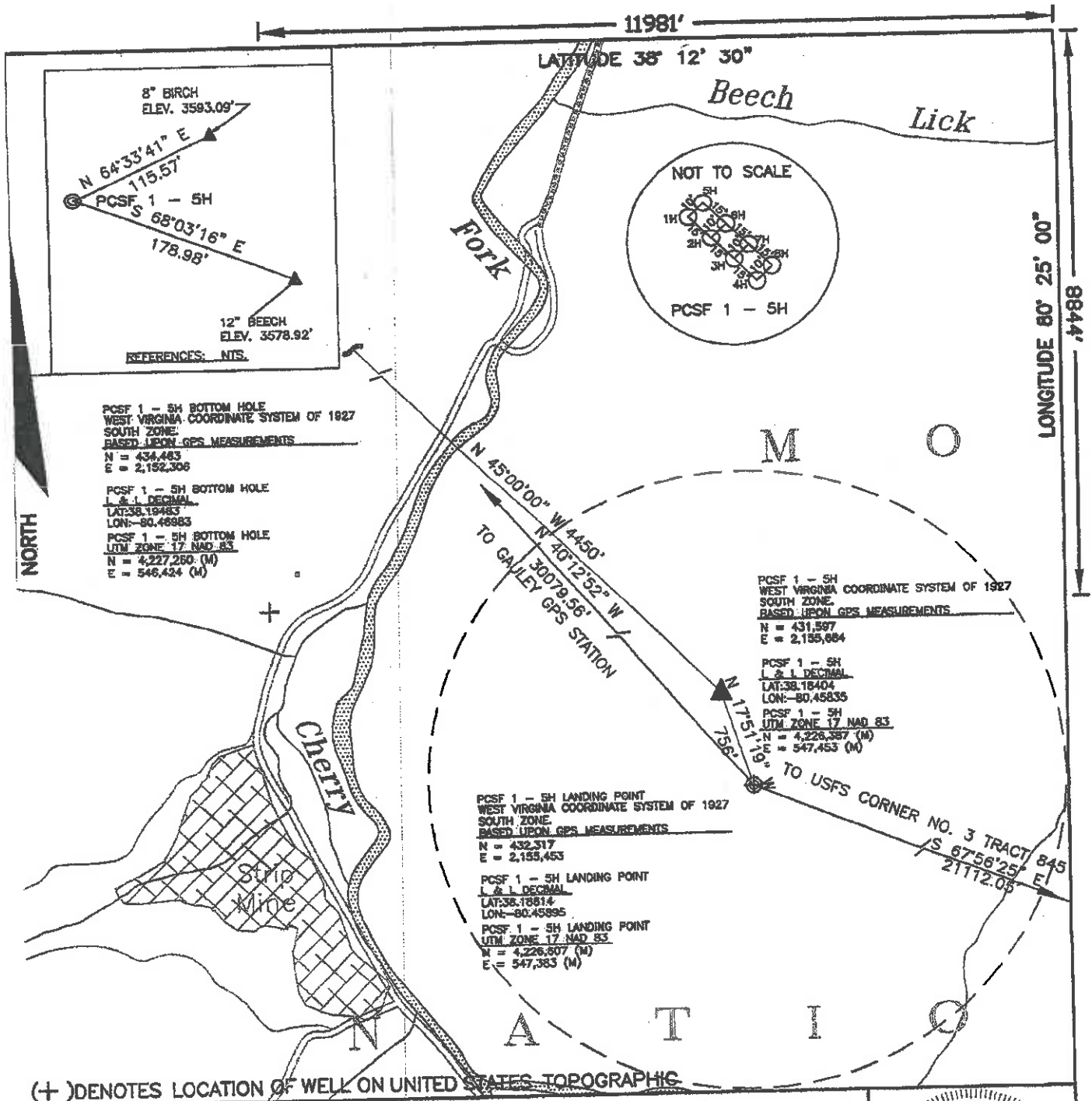
WELL TYPE: OIL GAS CBM LIQUID INJECTION WASTE DISPOSAL
 (IF "GAS,") PRODUCTION STORAGE DEEP SHALLOW

LOCATION: ELEVATION 3800± WATERSHED SOUTH FORK OF CHERRY RIVER
 DISTRICT FALLING SPRINGS COUNTY GREENBRIER
 QUADRANGLE FORK MOUNTAIN ACREAGE 21527
 SURFACE OWNER PLUM CREEK TIMBERLANDS, LP LEASE ACREAGE 21527
 OIL & GAS ROYALTY OWNER HIGHLAND RESOURCES INC., & BRC APPALACHIAN MINERALS I, LLC, & OXY USA, INC.

PROPOSED WORK: DRILL CONVERT DRILL DEEPER REDRILL FRACTURE OR STIMULATE
 PLUG OFF OLD FORMATION PERFORATE NEW FORMATION OTHER PHYSICAL CHANGE
 IN WELL (SPECIFY) _____
 PLUG AND ABANDON CLEAN OUT AND REPLUG

TARGET FORMATION Marcellus Shale
 ESTIMATED DEPTH TVD = 8060' MD = 13469'

WELL OPERATOR BRC OPERATING COMPANY, LLC DESIGNATED AGENT MARC MONTELEONE
 ADDRESS 200 CRESCENT COURT, SUITE 200 ADDRESS 800 QUARRIER STREET
DALLAS, TX 75201 CHARLESTON, WV 25325 10/25/2013



(+) DENOTES LOCATION OF WELL ON UNITED STATES TOPOGRAPHIC

FILE NO. W10-290-1813
 DRAWING NO. W10-290-A25
 SCALE 1"=1000'
 MINIMUM DEGREE OF ACCURACY 1:2500
 PROVEN SOURCE OF ELEVATION GPS
GLOBAL POSITIONING SYSTEM

I THE UNDERSIGNED, HEREBY CERTIFY THAT THIS PLAT IS CORRECT TO THE BEST OF MY KNOWLEDGE AND BELIEF AND SHOWS ALL THE INFORMATION REQUIRED BY LAW AND THE REGULATIONS ISSUED AND PRESCRIBED BY THE DIVISION OF ENVIRONMENTAL PROTECTION.

(SIGNED) [Signature]
 PROFESSIONAL SURVEYOR No. 1841



WVDEP
 OFFICE OF OIL AND GAS
 1356 HANSFORD ST.
 CHARLESTON, WV 25301

WELL TYPE: OIL GAS CBM LIQUID INJECTION WASTE DISPOSAL
 (IF "GAS,") PRODUCTION STORAGE DEEP SHALLOW
 LOCATION: ELEVATION 3800± WATERSHED SOUTH FORK OF CHERRY RIVER
 DISTRICT FALLING SPRINGS COUNTY GREENBRIER
 QUADRANGLE FORK MOUNTAIN ACREAGE 21527
 SURFACE OWNER PLUM CREEK TIMBERLANDS, LP LEASE ACREAGE 21527
 OIL & GAS ROYALTY OWNER HIGHLAND RESOURCES INC., & BRC APPALACHIAN MINERALS I, LLC., & OXY USA, INC.
 PROPOSED WORK: DRILL CONVERT DRILL DEEPER REDRILL FRACTURE OR STIMULATE
 PLUG OFF OLD FORMATION PERFORATE NEW FORMATION OTHER PHYSICAL CHANGE
 IN WELL (SPECIFY) _____
 PLUG AND ABANDON CLEAN OUT AND REPLUG
 TARGET FORMATION Marcellus Shale
 ESTIMATED DEPTH TVD = 8060' MD = 13469'

DATE MARCH 21, 2011
 OPERATOR'S WELL NO. PCSF 1 - 5H
 API WELL NO. 47 025 00040H
 STATE COUNTY PERMIT

WELL OPERATOR BRC OPERATING COMPANY, LLC DESIGNATED AGENT MARC MONTELEONE
 ADDRESS 200 CRESCENT COURT, SUITE 200 ADDRESS 600 QUARRIER STREET
DALLAS, TX 75201 CHARLESTON, WV 25325

JUL 25 2011

26-00040H

Alliance Consulting, Inc.

Engineers
Constructors
Scientists

BECKLEY, WV
(304) 255-0491
SUMMERSVILLE, WV
(304) 883-2360

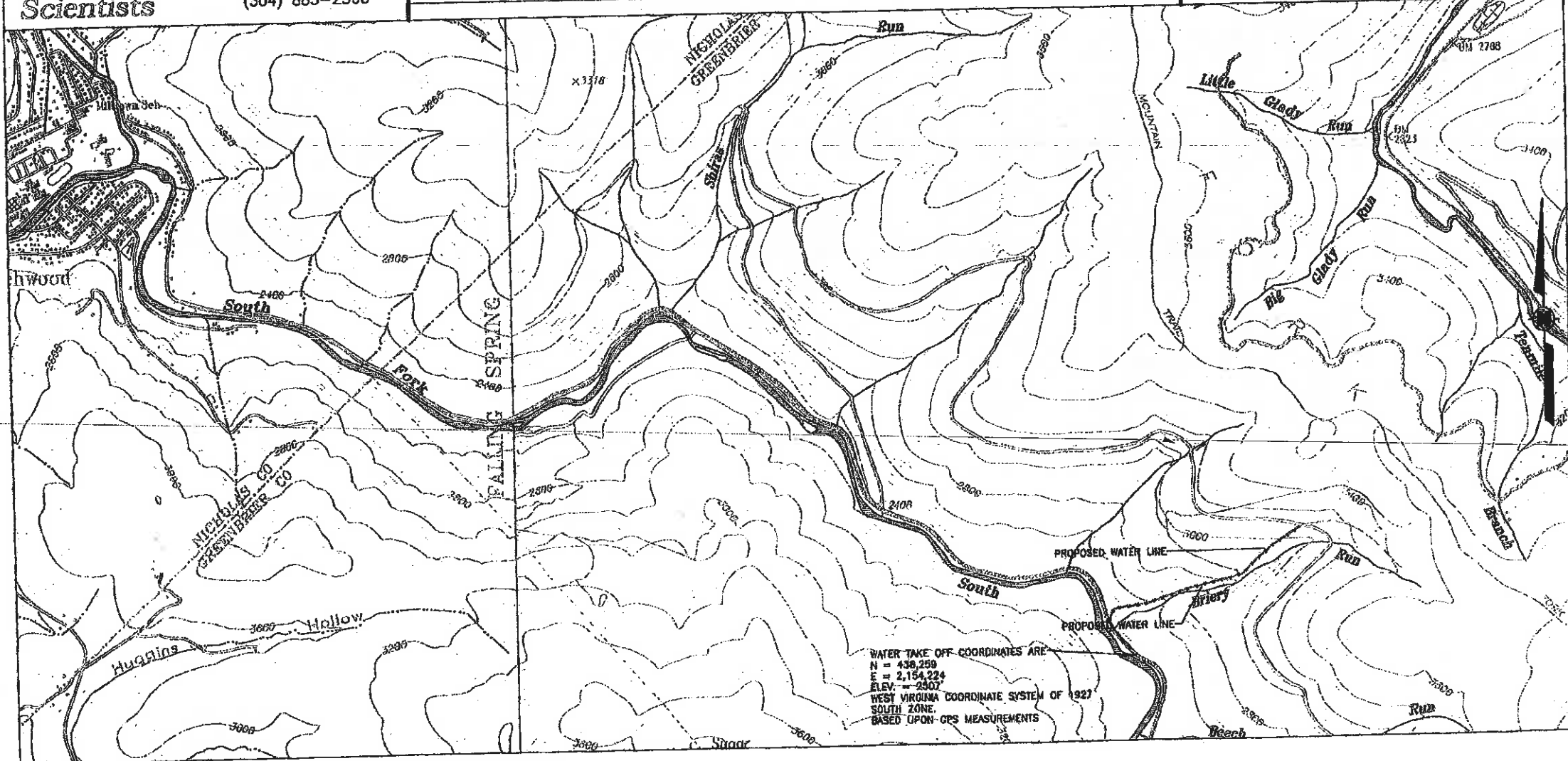
FORM W-9

PLUM CREEK SOUTH FORK
ROAD LOCATION PCSF 1
NEAR RICHWOOD, GREENBRIER COUNTY, WEST VIRGINIA

PREPARED FOR
BRC OPERATING CO. LLC.
200 CRESENT CT., SUITE 200, DALLAS, TEXAS 75201

SCALE: 1" = 2000'

DRAWN BY	RCD
CHECKED BY	RCD
APPROVED BY	RCD
DRAWING NUMBER	
W10-290-A40	FIGURE 1



JUL 15 2011