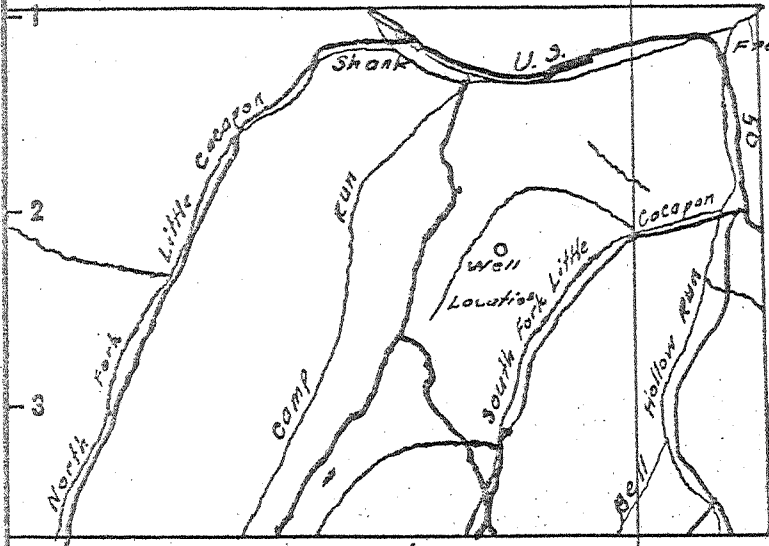


2 39° 20'

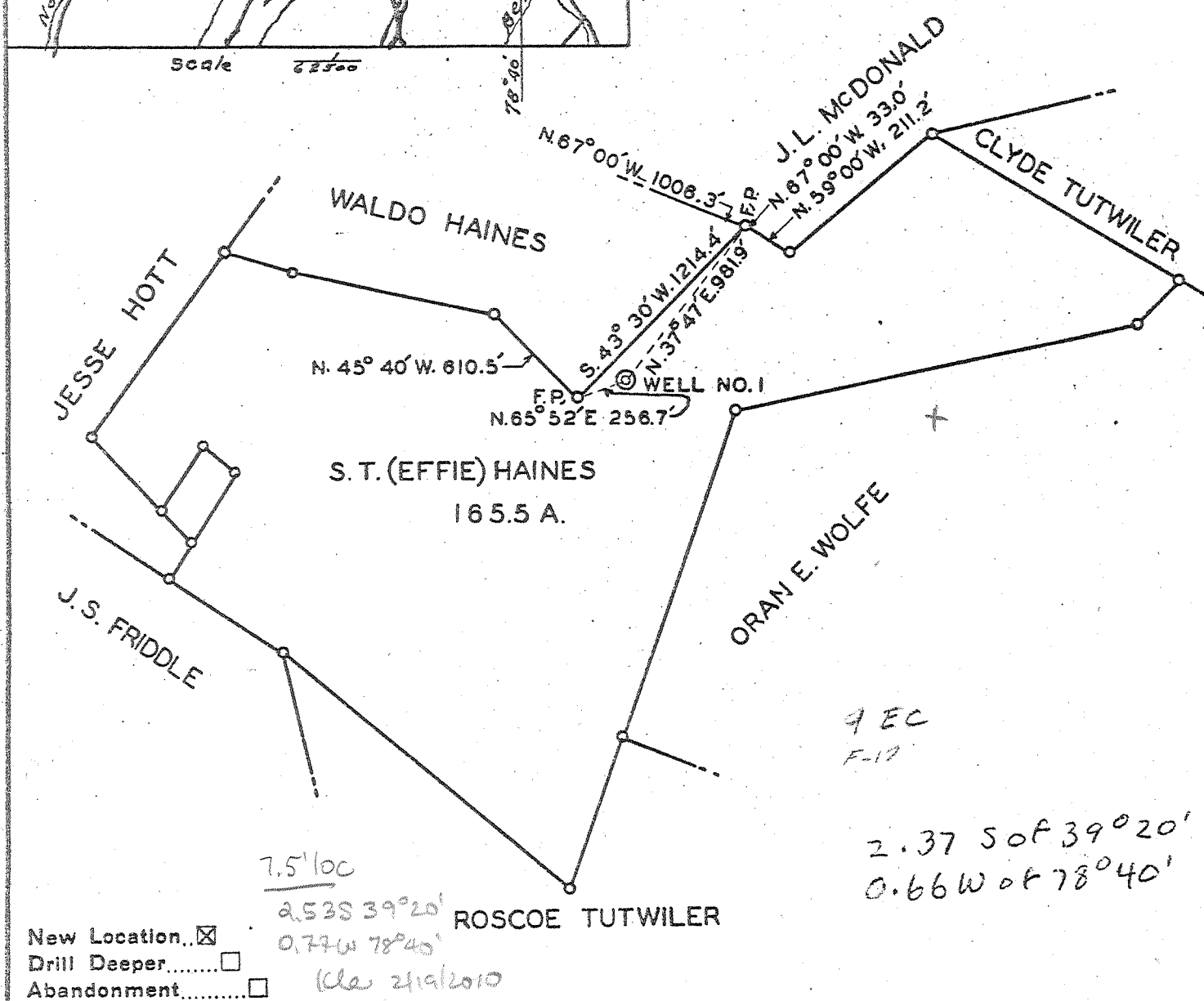
Latitude 39° 20'



Scale 1:62500

78° 40'

Longitude 78° 40'



- New Location...
- Drill Deeper.....
- Abandonment.....

7.5' loc
 2.53S 39°20'
 0.77W 78°40'
 (See 2/19/2010)

9 EC
F-12

2.37 S of 39° 20'
 0.66 W of 78° 40'

Company	TRANSCONTINENTAL PRODUCTION CO.	
Address	744 BROAD ST., NEWARK, N.J.	
Farm	S.T.(EFFIE) HAINES	
Tract	Acres 165.5	Lease No. 37
Well (Farm) No.	1	Serial No. 4
Elevation (Spirit Level)	1342.0	
Quadrangle	HANGING ROCK - S.W. Augusta 75	
County	HAMPSHIRE District SHERMAN	
Engineer	<i>James J. Morris</i>	
Engineer's Registration No.	1739	
File No.	Drawing No.	
Date	FEB. 23, 1956 Scale 1 IN. = 800 FT.	

STATE OF WEST VIRGINIA
 DEPARTMENT OF MINES
 OIL AND GAS DIVISION
 CHARLESTON

WELL LOCATION MAP
 FILE NO. HAMP-7

+ Denotes location of well on United States Topographic Maps, scale 1 to 62,500, latitude and longitude lines being represented by border lines as shown.

- Denotes one inch spaces on border line of original tracing.

plugged 01/23/1957

5-0 *208*
 Deep well



STATE OF WEST VIRGINIA
DEPARTMENT OF MINES
OIL AND GAS DIVISION 2

Quadrangle Hanging Rock

Permit No. HAM-7

WELL RECORD

Oil or Gas Well Dry
(KIND)

Company Transcontinental Production Company
Address 744 Broad St., Newark, New Jersey
Farm S. T. (Effie) Haines Acres 165.5
Location (waters) Check Location Map
Well No. 1 Elev. 1342
District Cherman County Hamshire
The surface of tract is owned in fee by S. T. (Effie) Haines, et al Address Shanks, W. Va.
Mineral rights are owned by M. E. Anderson, et al Address Warren, Pa.
Drilling commenced June 10, 1956
Drilling completed October 24, 1956
Date Shot None From To
With
Open Flow /10ths Water in Inch
None /10ths Merc. in Inch
Volume Cu. Ft.
Rock Pressure lbs. hrs.
Oil None bbls., 1st 24 hrs.
WELL ACIDIZED None

Casing and Tubing	Used in Drilling	Left in Well	Packers
Size			Kind of Packer
16			
13			
10 9 5/8"	2003'	2003'	Size of
8 1/4"			
6 5/8" 7" O.D.	6085'	6085'	Depth set
5 3/16"			
3			Perf. top
2			Perf. bottom
Liners Used			Perf. top
			Perf. bottom

CASING CEMENTED 9 5/8 SIZE 1991 No. Ft. 3/6/56 Date
632 sks. - Cemented back to surface

COAL WAS ENCOUNTERED AT None FEET INCHES
 FEET INCHES FEET INCHES
 FEET INCHES FEET INCHES

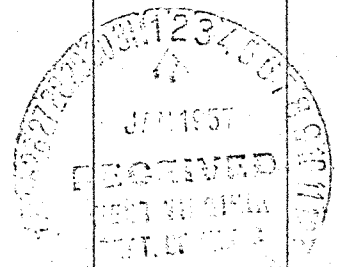
WELL FRACTURED Approximately 12,000 gals. Petrofrac through perforations 5878-88, 5390-5914, 5925-43, 5955-65, 5968-88

RESULT AFTER TREATMENT None

ROCK PRESSURE AFTER TREATMENT None

Fresh Water None Feet Salt Water None Feet

Formation	Color	Hard or Soft	Top	Bottom	Oil, Gas or Water	Depth	Remarks
Top soil and clay			0	.50			
Slate			50	76			
Slate and gritty lime			76	111			
Shale-lime			111	154			
Shale			154	177			
Lime			177	350			
Lime-Shale			350	367			
Lime			367	380			
Sand-Shale			380	401			
Lime-Shale			401	670			
Shale			670	698			
Shale-Lime			698	723			
Shale			723	883			
Sand			883	900			
Sand-Shale			900	922			
Lime			922	936			
Lime-Shale			936	1036			
Sandy lime			1036	1067			
Shale-Lime			1067	1754			
Sandy lime-Shale			1754	1806			
Lime			1806	1826			
Lime-Shale			1826	1884			
Sand-Shale			1884	1915			
Shale-Lime			1915	1935			
Sand-Shale			1935	1974			



Formation	Color	Hard or Soft	Top 2	Bottom	Oil, Gas or Water	Depth Found	Remarks
Shale-Lime			1974	2561			
Lime			2561	2638			
Shale-Lime			2638	2662			
Sandy Lime			2662	2752			
Lime			2752	2843			
Lime-Shale			2843	2856			
Lime			2856	2909			
Shale-Lime			2909	2959			
Lime			2959	3100			
Shale-Lime			3100	3131			
Black lime			3131	3201			
Shale-Lime			3201	3446			
Lime			3446	3481			
Shale-Lime			3481	3927			
Shale			3927	4183			
Shale-Lime			4183	4236			
Lime			4236	4269			
Slate			4269	4305			
Shale-Lime			4305	4703			
Lime			4703	4720			
Shale-Lime			4720	4998			
Sandy lime			4998	5018			
Shale-Sand			5018	5054			
Sandy lime-Slate			5054	5070			
Shale-Lime			5070	5438			
Shale			5438	5443			
Shale-Lime			5443	5494			
Shale			5494	5572			
Shale-Lime			5572	5660			
Shale Black			5660	5852			
Oriskany Sand			5852	6085	Show of gas	5878-5914	✓
Lime Shells	-Halt		6085	6208	Show of gas	5925-5943	
				485			
				5572	5852	6085	
				1342	1342	1342	
				4230	4510	4743	
				2			

Date 12-31, 1926

APPROVED Transcontinental Prod. Co., Owner

By V. R. Hughes (Title)