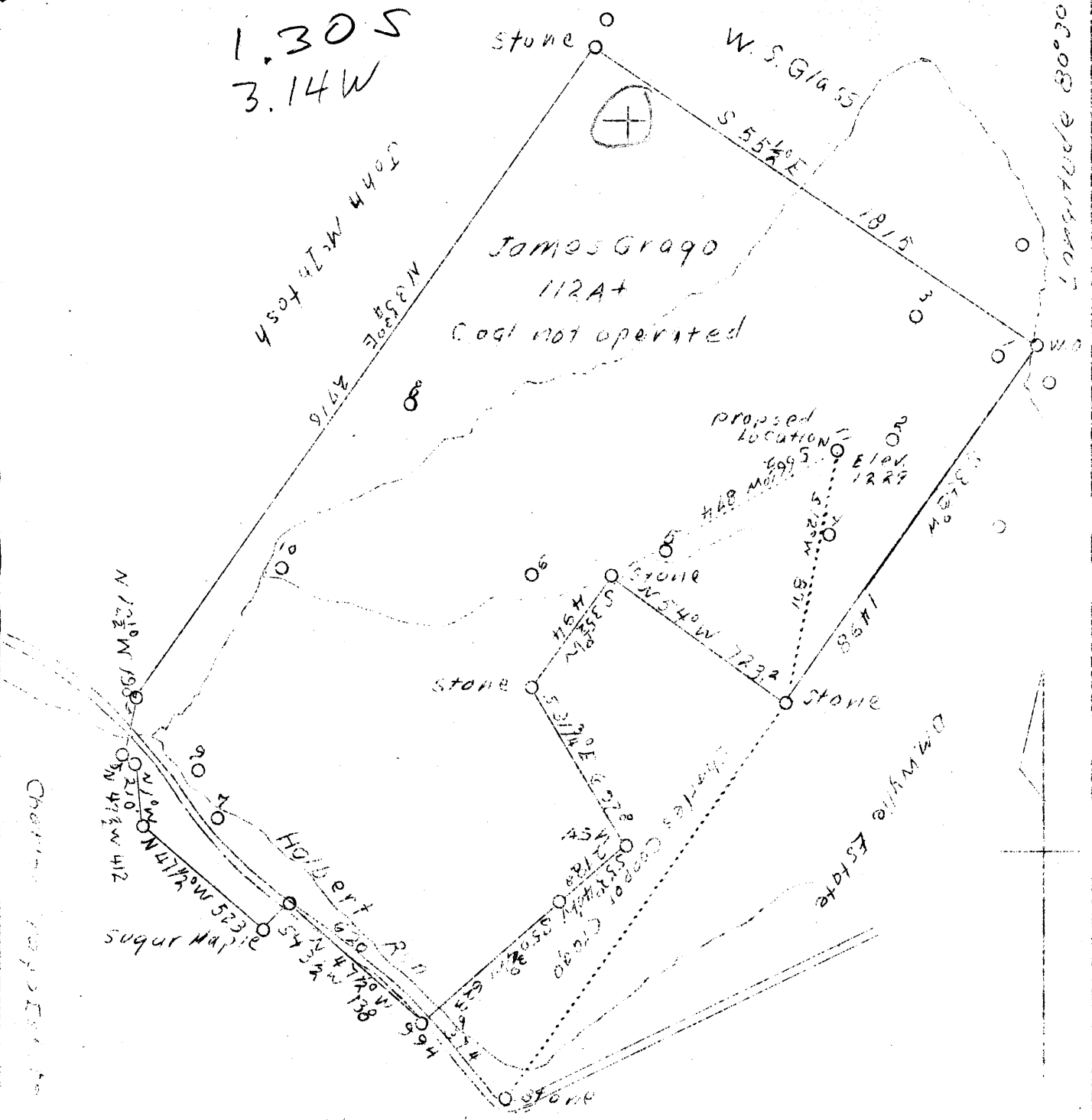




Latitude 40°30'

1.30 S  
3.14 W



Leo Obremski

Company	James Crago
Address	R. 1, New Cumberland, W. Va.
Farm	James Crago
Tract	One
Acres	112 plus - Well No. 11
Elevation	-
Quadrangle	Steubenville N.E
County	Hancock
District	Clay
Engineer	Chas. J. Kaltenbach
Eng. Reg. No.	134
Drawing No.	Two
Date	Oct. 7, 1938
Scale	1" = 500'

STATE OF WEST VIRGINIA  
 Department of Mines  
 OIL & GAS DIVISION  
 Charleston

WELL LOCATION MAP

File No. HAN-18

x Denotes location of well on U. S. Topographic Maps, scale 1 to 62,500, latitude and longitude lines being represented by border lines as shown.

- Denotes one inch spaces on border line of original tracing.

6-6 8 ✓

