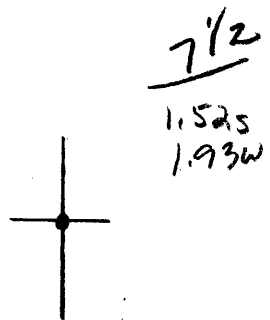


Latitude

40° 35'

80° 30'

Longitude



Topo Location

|           |              |          |              |
|-----------|--------------|----------|--------------|
| 7.5' Loc. | <u>1.525</u> | 15' Loc. | <u>1.525</u> |
|           | <u>1.930</u> | (calc.)  | <u>1.93</u>  |

Company Smith P/In

Farm Hillcrest Farms 1

15' Quad Wellsville  
(sec.)

7.5' Quad E Liverpool South

District GRANT

WELL LOCATION PLAT

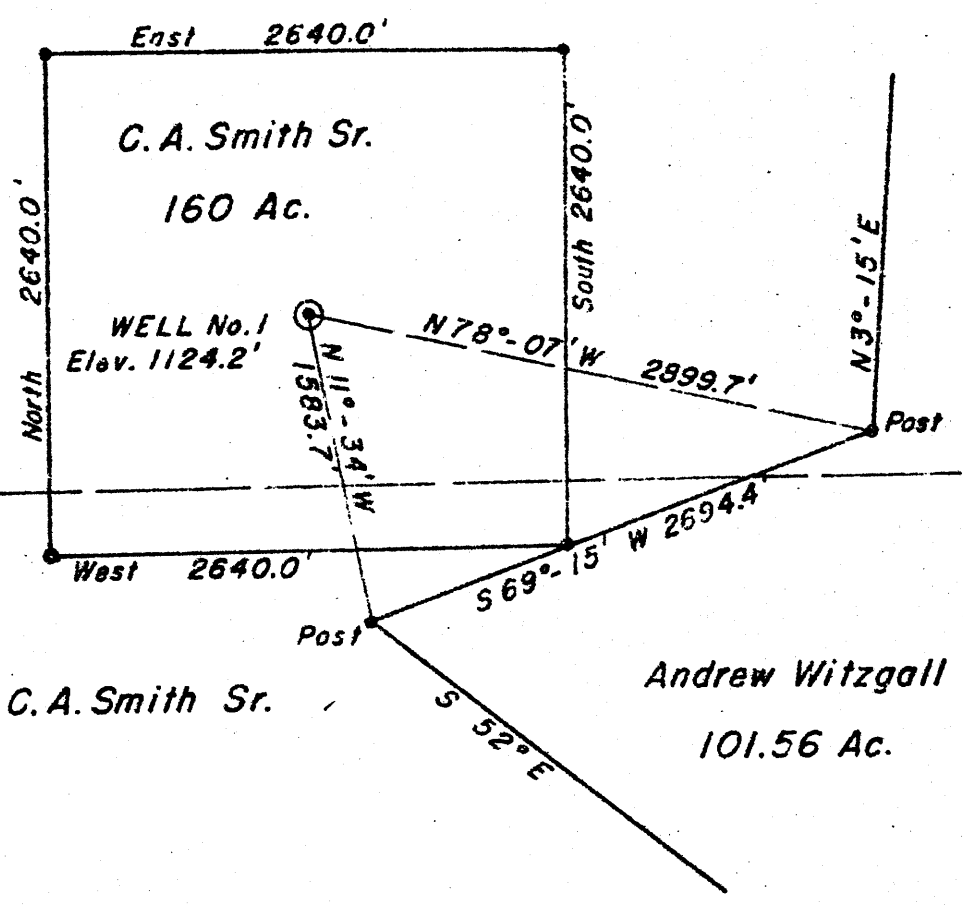
County 029 Permit 44



7.5 100

1.625 of 40°35'  
2.07W of 80°30'  
7 NC (A-9)

C. A. Smith Sr.



Grant District  
Poe District

C. A. Smith Sr.

Andrew Witzgall  
101.56 Ac.

New Location +  
Drill Deeper.....  
Abandonment.....

Company Smith Petroleum Co.  
 Address Chester W. Va.  
 Farm Hillcrest Farms C.A. Smith, Owner  
 Tract \_\_\_\_\_ Acres 160 Lease No. W. Va. 30  
 Well (Farm) No. \_\_\_\_\_ Serial No. \_\_\_\_\_  
 Elevation (Spirit Level) 1124.2  
 Quadrangle Wellsville - 5E  
 County Hancock District Grant  
 Engineer George S. Bloomgren  
 Engineer's Registration No. Ohio 540  
 File No. \_\_\_\_\_ Drawing No. \_\_\_\_\_  
 Date May 9, 1944 Scale 1" = 1000'

STATE OF WEST VIRGINIA  
DEPARTMENT OF MINES  
OIL AND GAS DIVISION  
CHARLESTON

WELL LOCATION MAP  
FILE NO. HAN-44

+ Denotes location of well on United States Topographic Maps, scale 1 to 62,500. latitude and longitude lines being represented by border lines as shown.  
- Denotes one inch spaces on border line of original tracing.

Deep Well ✓

No. Ham. 44  
sville Quad.

Dry Hole  
CASING & TUBING

Company  
Address  
Farm  
Location  
Well No.  
District  
Surface  
Mineral  
Commenced  
Completed  
Salt Water

Smith Petroleum Co.  
Hillcrest Farms #1 Acres 10 324  
1.6 Mi. S 40 degrees 35' 2.05 Mi. W. 80 Degrees 30' 8 1093  
Elev. 1124.2  
Grant Hancock County Reduced to 6 1/2" hole 4801  
June 1, 1944  
Oct. 16, 1944  
4992-4994 1 blr. pr. hr.  
5009-5012 3 brls pr. hr.

|                           |      |      |                                       |      |      |
|---------------------------|------|------|---------------------------------------|------|------|
| Surface                   | 0    | 2    | Lime, Dark Gr.                        | 2150 | 2165 |
| Shale                     | 2    | 78   | Shale & Lime Shells                   | 2165 | 2450 |
| Lime Shell                | 78   | 83   | Lime, Dark Gr.                        | 2450 | 2487 |
| Coal                      | 83   | 85   | Shale & Lime Shells                   | 2487 | 2938 |
| Shale, Lt. Gray           | 85   | 95   | Shale, Black                          | 2938 | 3003 |
| Lime, Lt. Gray            | 95   | 110  | Shale, Gray                           | 3003 | 3146 |
| Shale, Lt. Gray           | 110  | 142  | Lime, Brown                           | 3146 | 3163 |
| Sand, Red                 | 142  | 145  | Shale, Gray                           | 3163 | 3920 |
| Lime, Sandy               | 145  | 171  | Shale, Brown - 4A1                    | 3920 | 4000 |
| Shale, Dark               | 171  | 190  | Lime                                  | 4000 | 4025 |
| Lime, Dark Gray           | 190  | 220  | Shale & Lime Shells                   | 4025 | 4145 |
| Shale, Dark               | 220  | 225  | Shale, Brown                          | 4145 | 4197 |
| Sand, Gray                | 225  | 255  | Shale & Lime Shells                   | 4197 | 4310 |
| Shale, Black              | 255  | 259  | Shale, Black - 2                      | 4310 | 4503 |
| Sand, Gray                | 259  | 264  | Lime, brown                           | 4503 | 4507 |
| Shale, Lt. Gray           | 264  | 270  | Shale, Black - 7                      | 4507 | 4686 |
| Lime, Dark                | 270  | 277  | Lime Shell                            | 4686 | 4688 |
| Sand, Coarse              | 277  | 298  | Shale, Black - 7                      | 4688 | 4722 |
| Shale, Black              | 298  | 310  | Lime                                  | 4722 | 4727 |
| Shale, Lt. Gray           | 310  | 316  | Shale, Black - Marcellus?             | 4727 | 4785 |
| Sandy Shale               | 316  | 319  | Lime, Hard - 463                      | 4785 | 4991 |
| Lime                      | 319  | 360  | Sand, White - ORSK                    | 4991 | 5012 |
| Shale                     | 360  | 401  |                                       |      |      |
| Lime                      | 401  | 406  | Gas: 4730-4733-4735-4736- 4738-4740 - |      |      |
| Shale & Lime Shells       | 406  | 525  | 4747-4754-4764-4777                   |      |      |
| Lime, Dark                | 525  | 560  |                                       |      |      |
| Shale & Lime Shells       | 560  | 580  | Water 255                             |      |      |
| Sand, Coarse - Injun?     | 580  | 590  |                                       |      |      |
| Shale, Light Gray         | 590  | 607  |                                       |      |      |
| Sand, Hard - Injun?       | 607  | 668  |                                       |      |      |
| Shale, Dark Gray          | 668  | 690  |                                       |      |      |
| Lime, Lt. Gray            | 690  | 712  |                                       |      |      |
| Shale & Lime Shells       | 712  | 855  |                                       |      |      |
| Sandy Shale               | 855  | 905  |                                       |      |      |
| Sand                      | 905  | 934  |                                       |      |      |
| Shale & Sand Streaks      | 934  | 975  |                                       |      |      |
| Shale, Black - Coffee sh. | 975  | 1008 |                                       |      |      |
| Sand, Berea SLM           | 1008 | 1043 | Small amount of gas                   |      |      |
| Lime, Gray                | 1043 | 1047 |                                       |      |      |
| Shale, White              | 1047 | 1051 |                                       |      |      |
| Lime, Hard                | 1051 | 1085 |                                       |      |      |
| Shale, Gray               | 1085 | 1110 |                                       |      |      |
| Lime                      | 1110 | 1152 |                                       |      |      |
| Shale & Lime Shells       | 1152 | 1305 |                                       |      |      |
| Lime, Dark                | 1305 | 1419 |                                       |      |      |
| Shale & Lime Shells       | 1419 | 1554 |                                       |      |      |
| Shale, Gray               | 1554 | 1570 |                                       |      |      |
| Sand, Gray                | 1570 | 1630 |                                       |      |      |
| Shale, Pink               | 1630 | 1633 |                                       |      |      |
| Sand, Gray                | 1633 | 1668 |                                       |      |      |
| Shale                     | 1668 | 1675 |                                       |      |      |
| Sand                      | 1675 | 1714 |                                       |      |      |
| Shale & Sandy Shale       | 1714 | 1927 |                                       |      |      |
| Lime Shell                | 1927 | 1932 |                                       |      |      |
| Shale & Lime Shells       | 1932 | 2082 |                                       |      |      |
| Lime, Dark                | 2082 | 2135 |                                       |      |      |
| Shale, Dark Gray          | 2135 | 2150 |                                       |      |      |

Pocket Blow outs  
4785 4991  
1124 1124  
- 3661 - 3867  
475