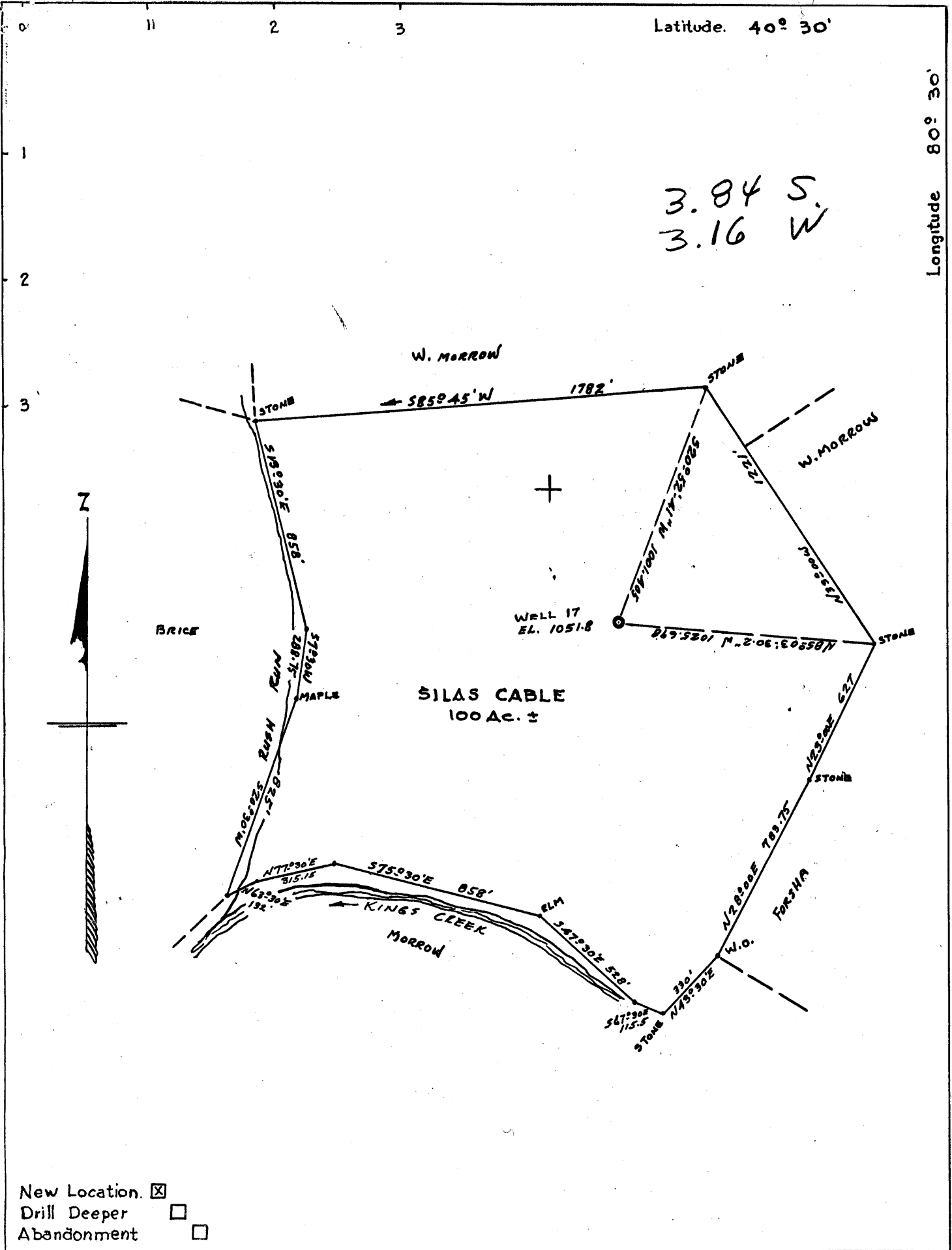




M

P



- New Location.
- Drill Deeper
- Abandonment

Company <u>GLENN DEVITT ET-AL</u>	
Address <u>HOOKSTOWN PENNA R.D.#1</u>	
Farm <u>SILAS CABLE</u>	
Tract _____	Acres <u>100</u> Lease No. _____
Well (Farm) No. <u>17</u>	Serial No. _____
Elevation (Spirit Level) <u>1051.8</u>	
Quadrangle <u>STUEBENVILLE - NE.</u>	
County <u>HANCOCK</u>	District <u>BUTLER</u>
Engineer <u>Frank Lepera</u>	
Engineer's Registration No. <u>1124 W.VA.</u>	
File No. _____	Drawing No. _____
Date <u>11-15-56</u>	Scale <u>1" = 500'</u>

STATE OF WEST VIRGINIA  
DEPARTMENT OF MINES  
OIL AND GAS DIVISION  
CHARLESTON

**WELL LOCATION MAP**  
FILE NO. HAN-74

+ Denotes location of well on United States Topographic Maps, scale 1 to 62,500, latitude and longitude lines being represented by border lines as shown.

- Denotes one inch spaces on border line of original tracing.



STATE OF WEST VIRGINIA  
DEPARTMENT OF MINES  
OIL AND GAS DIVISION

Quadrangle STUBENVILLE

Permit No. HAN-74

WELL RECORD

Oil or Gas Well 014  
(KIND)

Company GUENN DEVITT ET AL  
Address R. D. HOOKSTOWN PA.  
Farm SILAS CABLE Acres 100  
Location (waters) KINGS CREEK  
Well No. 17 Elev. 1051.8  
District BUTLER County HANCOCK  
The surface of tract is owned in fee by DONALD SWERINGEN Address WEIRTON W.VA.  
Mineral rights are owned by CABLE HEIRS Address TORONTO OHIO  
Drilling commenced MARCH 26 1957  
Drilling completed MAY 31 1957  
Date Shot NO From — To —  
With —  
Open Flow /10ths Water in — Inch  
/10ths Merc. in — Inch  
Volume — Cu. Ft.  
Rock Pressure — lbs. hrs.  
Oil 6 bbls., 1st 24 hrs.  
WELL ACIDIZED NO  
WELL FRACTURED NO

Casing and Tubing	Used in Drilling	Left in Well	Packers
Size			<u>NONE</u>
16			Kind of Packer
13			
10	<u>16-10</u>	<u>16-10</u>	Size of
8 3/4			
6 5/8	<u>9 3/8</u>	<u>9 3/8</u>	Depth set
5 3/16			
3			Perf. top
2		<u>12 90</u>	Perf. bottom
Liners Used			Perf. top
			Perf. bottom

CASING CEMENTED — SIZE — No. Ft. — Date —

COAL WAS ENCOUNTERED AT — FEET — INCHES  
— FEET — INCHES — FEET — INCHES  
— FEET — INCHES — FEET — INCHES

RESULT AFTER TREATMENT

ROCK PRESSURE AFTER TREATMENT

Fresh Water 65 Feet Salt Water 66.5 Feet

Formation	Color	Hard or Soft	Top	Bottom	Oil, Gas or Water	Depth	Remarks
CHAYESHAFT	GRAY	SOFT	0	65	WATER	65	
SAND	WHITE	HARD	65	350			
SLATE	DARK	SOFT	350	430			
LIME	WHITE	HARD	430	470			
SAND	WHITE	HARD	470	485			
SLATE & MUD	DARK	SOFT	485	540			
SHALE	GRAY	SOFT	540	665			
SALT SAND	WHITE	SOFT	665	705	WATER	665	
SLATE	DARK	SOFT	705	775			
			775	782			
MAXIAM SAND	LIGHT	HARD	782	814			
LIME	WHITE	HARD	814	945			
Big Spring SAND	DARK	HARD	945	1279			
SLATES LIME	GRAY	SOFT	1279	1291			
BREA GRIT SAND	LIGHT	SOFT	1279	1291	014	1291	TOTAL Depth

