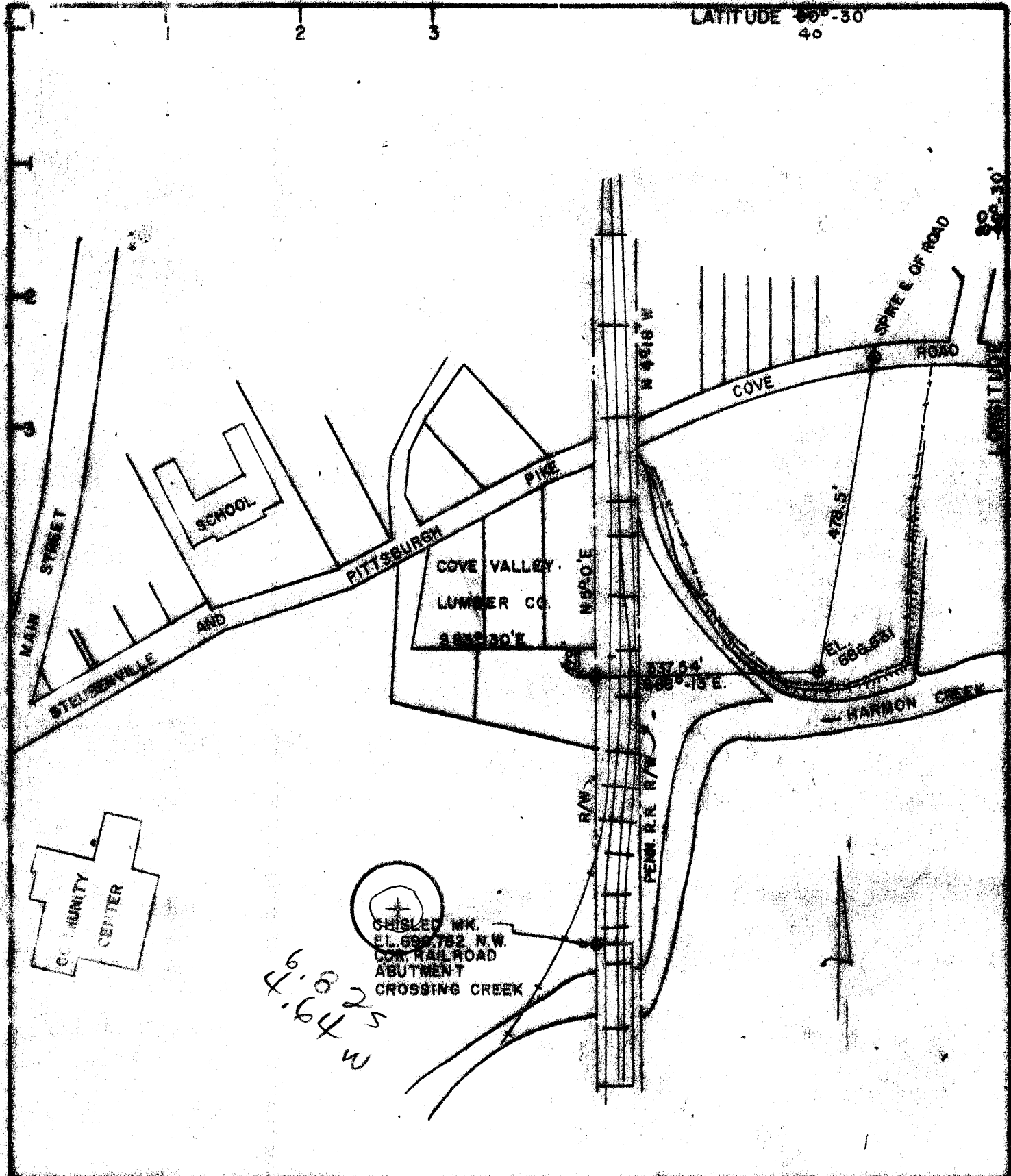


LATITUDE $40^{\circ}-30'$
40

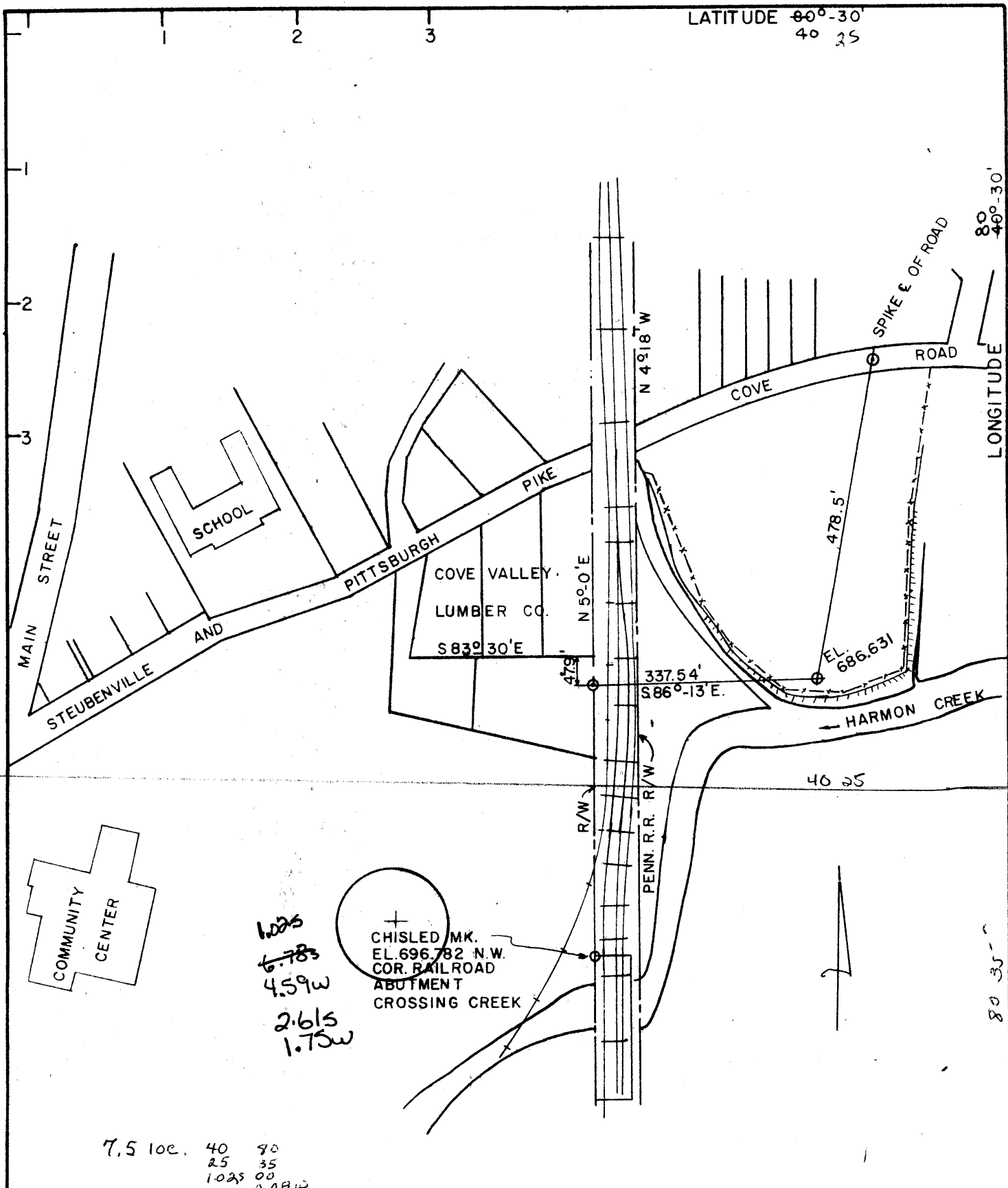


FRACTURE _____
 BEFORE 6 5 ST _____
 NEW LOCATION _____
 DRILL DEEPER _____
 REDRILL _____
 ABANDONMENT _____

I, THE UNDERSIGNED, HEREBY CERTIFY THAT THIS MAP IS CORRECT TO THE BEST OF MY KNOWLEDGE AND BELIEF AND SHOWS ALL THE INFORMATION REQUIRED BY PARAGRAPH 5 OF THE RULES AND REGULATIONS OF THE OIL AND GAS SECTION OF THE MINING LAWS OF WEST VIRGINIA.
 THE ACCURACY OF THIS SURVEY IS WITHIN THE LIMITS AND AS PRESCRIBED IN PARAGRAPH 5 BY THE OIL AND GAS DIVISION OF THE DEPARTMENT OF MINES REGULATIONS. PROVEN ELEVATION 696.782

NATIONAL STEEL Corp.
 COMPANY WEIRTON STEEL COMPANY DIVISION
 ADDRESS WEIRTON, WEST VIRGINIA
 FARM _____
 TRACT _____ ACRES _____ LEASE NO. _____
 WELL (FARM) NO. 1 SERIAL NO. _____
 ELEVATION (SPIRIT LEVEL) 686.631
 QUADRANGLE OHIO, PENNSYLVANIA
STEUBENVILLE, WEST VIRGINIA
 COUNTY HANCOCK DISTRICT BUTLER
 ENGINEER E.W. YOOS
 ENGINEER'S REGISTRATION NO. OHIO 2165
 FILE NO. _____ DRAWING NO. SK93461
 DATE 11-6-67 SCALE 1" = 200'

STATE OF WEST VIRGINIA
 DEPARTMENT OF MINES
 OIL AND GAS DIVISION
 CHARLESTON
WELL LOCATION MAP
 FILE NO. HAN-81
Disposal Well
 + DENOTES LOCATION OF WELL ON UNITED STATES TOPOGRAPHIC MAPS, SCALE 1 TO 62,500 LATITUDE AND LONGITUDE LINES BEING REPRESENTED BY BORDER LINES AS SHOWN.
 - DENOTES ONE INCH SPACES ON BORDER LINE OF ORIGINAL TRACING.
 DRAWN BY C.P. CARLISLE



7.5 loc. 40 80
25 35
1025 00
0.08W

1.025
6.783
4.59w
2.615
1.75w

CHISLED M.K.
EL. 696.782 N.W.
COR. RAILROAD
ABUTMENT
CROSSING CREEK

- FRACTURE _____
- BEFORE 6 5 27 _____
- NEW LOCATION _____
- DRILL DEEPER _____
- REDRILL _____
- ABANDONMENT _____

7/11/79

I, THE UNDERSIGNED, HEREBY CERTIFY THAT THIS MAP IS CORRECT TO THE BEST OF MY KNOWLEDGE AND BELIEF AND SHOWS ALL THE INFORMATION REQUIRED BY PARAGRAPH 5 OF THE RULES AND REGULATIONS OF THE OIL AND GAS SECTION OF THE MINING LAWS OF WEST VIRGINIA.

THE ACCURACY OF THIS SURVEY IS WITHIN THE LIMITS AND AS PRESCRIBED IN PARAGRAPH 5 BY THE OIL AND GAS DIVISION OF THE DEPARTMENT OF MINES REGULATIONS. PROVEN ELEVATION 696.782

COMPANY NATIONAL STEEL Corp. WEIRTON STEEL COMPANY DIVISION
 ADDRESS WEIRTON, WEST VIRGINIA
 FARM National Steel Corporation
 TRACT _____ ACRES _____ LEASE NO. _____
 WELL (FARM) NO. 1 SERIAL NO. _____
 ELEVATION (SPIRIT LEVEL) 686.631
 QUADRANGLE OHIO, PENNSYLVANIA STEUBENVILLE, WEST VIRGINIA
 COUNTY HAN COCK DISTRICT BUTLER
 ENGINEER F.W. YOOS
 ENGINEER'S REGISTRATION NO. OHIO 2165
 FILE NO. _____ DRAWING NO. SK93461
 DATE 11-6-67 SCALE 1" = 200'

STATE OF WEST VIRGINIA
 DEPARTMENT OF MINES
 OIL AND GAS DIVISION
 CHARLESTON

WELL LOCATION MAP
 FILE NO. HAN-81-P
47-029-0081-P

+ DENOTES LOCATION OF WELL ON UNITED STATES TOPOGRAPHIC MAPS, SCALE 1 TO 62,500 LATITUDE AND LONGITUDE LINES BEING REPRESENTED BY BORDER LINES AS SHOWN.

JUL 24 1979

- DENOTES ONE INCH SPACES ON BORDER LINE OF ORIGINAL TRACING.

DRAWN BY C.P. CARLISLE



STATE OF WEST VIRGINIA
DEPARTMENT OF MINES
OIL AND GAS DIVISION 2

Rotary
Spudder
Cable Tools
Storage E. HOLD
Oil or Gas Well **DRY**
(KIND)

Quadrangle Stabenville
Permit No. HAN. - 81

WELL RECORD

Weirton Steel Division
Company National Steel Corporation
Address P.O. Box 431, Weirton, W.Va. 26062
Farm National Steel Corp. Acres.....
Location (waters) Ohio
Well No. Han. No. 1 Elev. 686.631
District Butler County Hancock
The surface of tract is owned in fee by Weirton Steel Div.
National Steel Corp. Address Weirton, W.Va.
Mineral rights are owned by National Steel Corp.

| Casing and Tubing | Used in Drilling | Left in Well | Packers |
|--------------------|------------------|--------------|----------------------------|
| Size | | | |
| 16 | 68' | 68' | Kind of Packer <u>none</u> |
| 13 3/8 | 127' | 127' | Size of |
| 10 3/4 | 1092' | none | Depth set |
| 8 1/4 | | | <u>cement to</u> |
| 6 1/2 7 | 1414' | 1414' | <u>surface</u> |
| 5 3/16 | | | Perf. top |
| 4 1/2 | | | Perf. bottom |
| 3 | | | Perf. top |
| 2 | | | Perf. bottom |
| Liners Used | | | |

Address
Drilling commenced December 19, 1967
Drilling completed February 15, 1968
Date Shot From To
With
Open Flow /10ths Water in show gas Inch
/10ths Merc. in show gas Inch
Volume Cu. Ft.
Rock Pressure pump-in lbs. 800 psig hrs.
Oil bbls., 1st 24 hrs.
WELL ACIDIZED (DETAILS) water injection test-
after fracture 71 gpm @ 800 psig
WELL FRACTURED (DETAILS) 1100 bbls. frac by Dowell - treating pressure 2300 psi
at 50 bbls. per minute
RESULT AFTER TREATMENT (Initial open Flow or bbls.) show gas - water
ROCK PRESSURE AFTER TREATMENT HOURS
Fresh Water Feet Salt Water Feet
Producing Sand Depth

Attach copy of cementing record
CASING CEMENTED 7" 3-3/8" 127' 12-23-67
SIZE 1414 No. Ft. 4-6-68 Date
Amount of cement used (bags) 13-3/8"-85 bags/7"-760 bags
Name of Service Co. Dowell
COAL WAS ENCOUNTERED AT 140 FEET INCHES
FEET INCHES FEET INCHES
FEET INCHES FEET INCHES

| Formation | Color | Hard or Soft | Top | Bottom | Oil, Gas or Water | Depth | Remarks |
|-------------------------------|-----------|--------------|-----|--------|-------------------|-------|------------|
| unconsolidated | mixed | mixed | 0 | 68 | | | |
| shale | dark grey | hard | 68 | 85 | | | |
| sand | light | medium | 85 | 87 | water | 85 | whole full |
| shale | grey | medium | 87 | 116 | | | |
| sandy shale | lt. grey | medium | 116 | 123 | | | |
| shale | grey | hard | 123 | 140 | | | |
| coal blossom (lower Freeport) | black | soft | 140 | 143 | | | |
| sand | lt. grey | hard | 143 | 150 | | | |
| sandy shale | lt. grey | medium | 150 | 157 | | | |
| sand (Gas sand) | lt. grey | hard | 157 | 235 | | | |
| shale | grey | medium | 235 | 241 | | | |
| sand | grey | hard | 241 | 245 | | | |

RECEIVED
MAR 30 1970
OIL & GAS DIVISION
DEPT. OF MINES

| Formation | Color | Hard or Soft | Top \approx | Bottom | Oil, Gas or Water | Depth Found | Remarks |
|------------------|----------|--------------|---------------|--------|-------------------|-------------|------------|
| shale | dk.grey | medium | 245 | 257 | | | |
| lime | grey | hard | 257 | 263 | | | |
| sandy | grey | hard | 263 | 308 | | | |
| slate | black | soft | 308 | 313 | | | |
| shale | lt.brown | medium | 313 | 320 | | | |
| slate | black | soft | 320 | 235 | | | |
| shale | grey | medium | 325 | 385 | | | |
| sand | lt.grey | medium | 385 | 435 | water | 390' | unbailable |
| shale | grey | medium | 435 | 530 | | | |
| sandy shale | lt.grey | hard | 530 | 546 | | | |
| sandy lime | lt.grey | hard | 546 | 556 | | | |
| lime | grey | hard | 556 | 591 | | | |
| sandy Big Injun) | grey | hard | 591 | 732 | | | |
| shale | grey | med.hard | 732 | 1040 | | | |
| sandy | lt.brown | hard | 1040 | 1046 | | | |
| shale | grey | medium | 1046 | 1068 | | | |
| shale | dk.grey | soft | 1068 | 1086 | | | |
| sand (Berea) | grey | hard | 1086 | 1102 | | | |
| shale | grey | medium | 1102 | 1106 | | | |
| sand (Berea) | grey | hard | 1106 | 1116 | | | |
| shale | grey | medium | 1116 | 1257 | | | |
| sand | lt.grey | hard | 1257 | 1261 | | | |
| shale | grey | medium | 1261 | 1414 | | | |
| sand Gordon | grey | medium | 1414 | 1426 | | | |
| shale | dk.grey | medium | 1426 | 1520 | gas | 1418' | show |
| TOTAL DEPTH | | | | | | 1520' | |

Date March 24, 19 70
 WEIRTON STEEL DIVISION
 NATIONAL STEEL CORPORATION, Owner
 APPROVED
 By W. R. Schreiner
 W. R. Schreiner (Title) Treasurer