

40°35'00"

Latitude

.165
1.67w

80°37'30"

Longitude

Topo Location

7.5' Loc. _____ **15' Loc.** _____
(calc.) _____

Company RI Bradem Co

Farm CE Brenneman #50

15' Quad _____
(sec.) _____

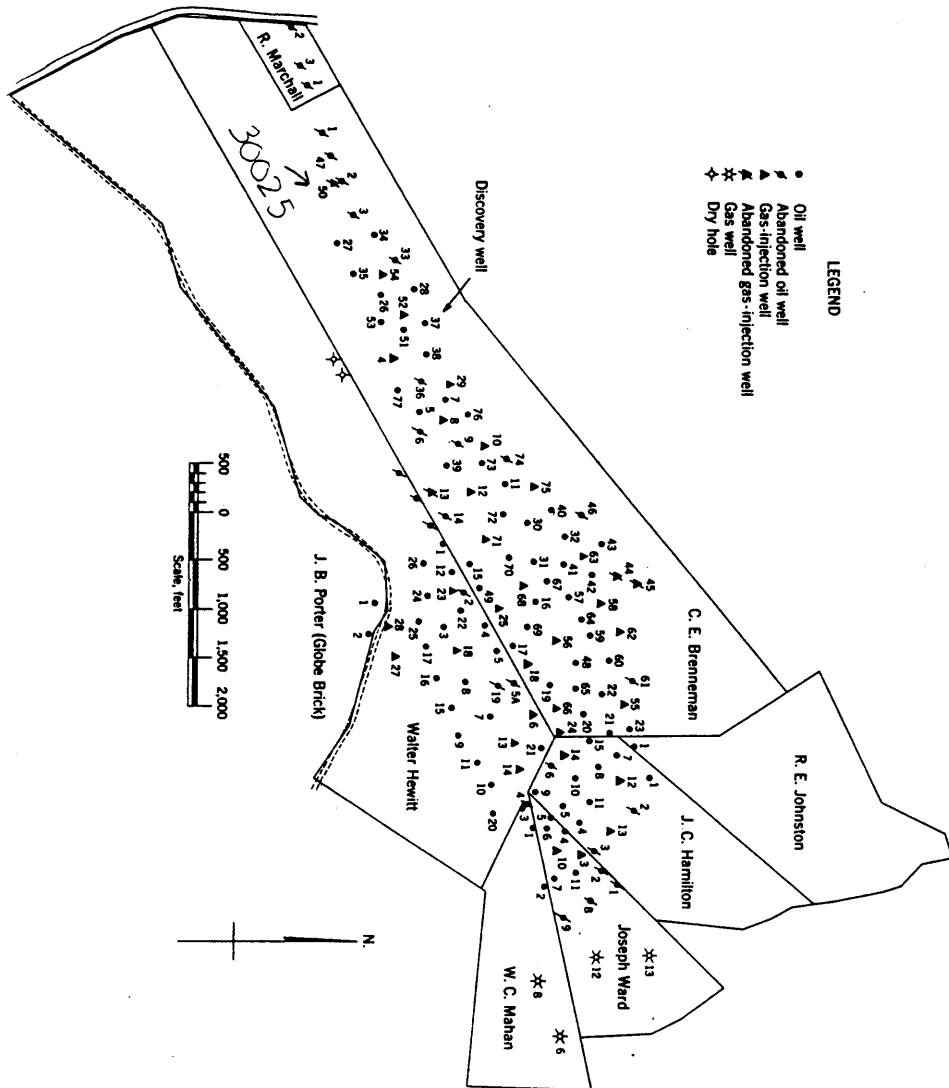
7.5' Quad Wellsville

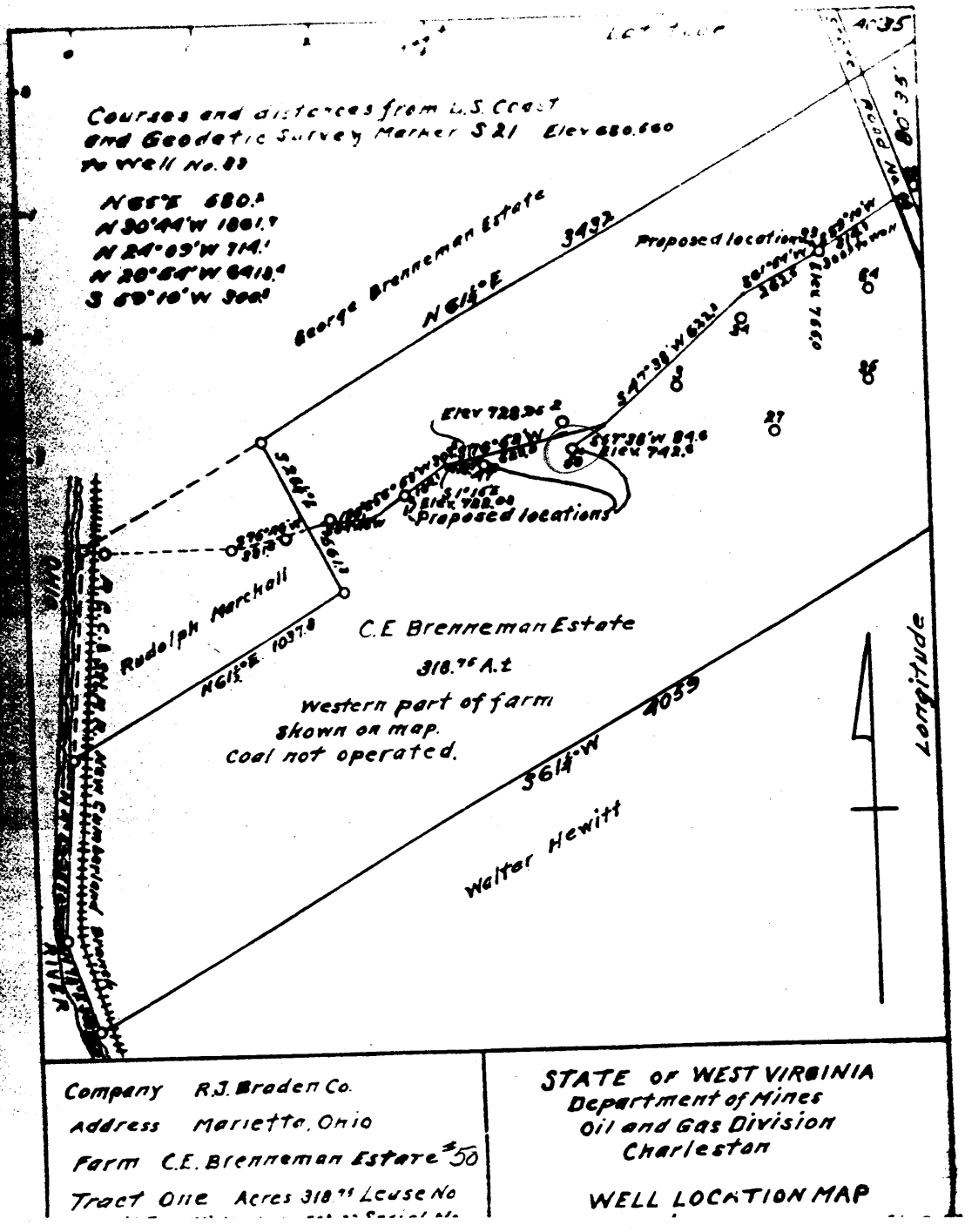
District Grant

WELL LOCATION PLAT

County 029 **Permit** 30025

Figure 1. - Ownership map of Brenneman field, Hancock County, W. Va., showing location and status of wells on December 31, 1948.





Grand District

039-25A

plugged
 6-20

TL 680'