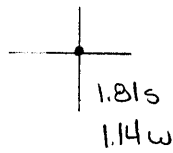


40° 32' 30"

Latitude

80° 30' 00"

Longitude



**Top Location**

7.5' Loc. \_\_\_\_\_ 15' Loc. \_\_\_\_\_  
 \_\_\_\_\_ (calc.) \_\_\_\_\_

**Company** Murray & Miller

**Farm** W N Bold #1

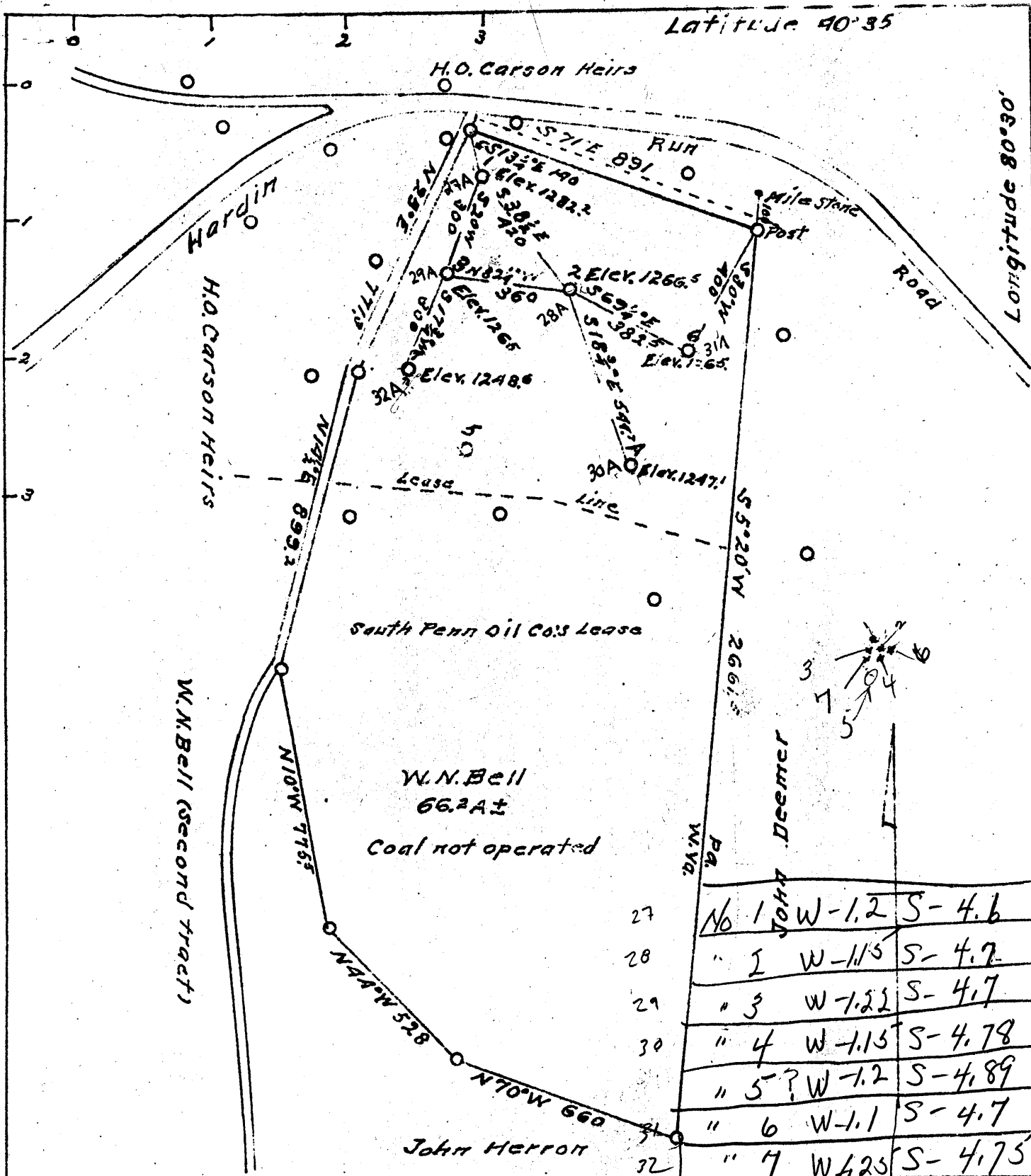
**15' Quad** \_\_\_\_\_  
(sec.)

**7.5' Quad** East Liverpool South

**District** Clay

**WELL LOCATION PLAT**

**County** 029 **Permit** 30027



Company Murra & Miller  
 Address Chester, W. Va.  
 Farm W.N. Bell  
 Tract One Acres 66.2± Lease No.  
 Well (Farm) Nos. 1, 2, 3, 4, 5 & 7 Serial No.  
 Quadrangle Wellsville S.E.  
 County Hancock  
 District Clay  
 Engineer  
 Engineer's Registration No.  
 File No. Drawing No. One  
 Date August 29, 1940.  
 Scale 1 inch = 400 Feet

STATE OF WEST VIRGINIA  
 Department of Mines  
 Oil and Gas Division  
 Charleston  
 WELL LOCATION MAP  
 File No. HAN-27A-32A Inc.  
 WELLS No. 1 - 7 Inc.  
 + Denotes location of well on  
 United States Topographic Maps,  
 scale 1 to 62,500, latitude and  
 longitude lines being  
 represented by border lines as  
 shown.  
 - Denotes one inch spaces on  
 border lines of original tracing.

.....District, Hancock County, W. Va.  
Drilled by Murray & Miller.  
7 mi. S. E. of Chester.

	Top.	Bottom.
Bottom of Big Injun		1030
Berea Sand, top	1325	
Total depth		1359

The Bell wells made about 25 bbls. on the start.