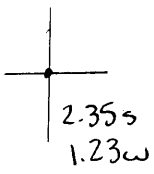


40°35'00"

Latitude

Longitude

80°30'00"



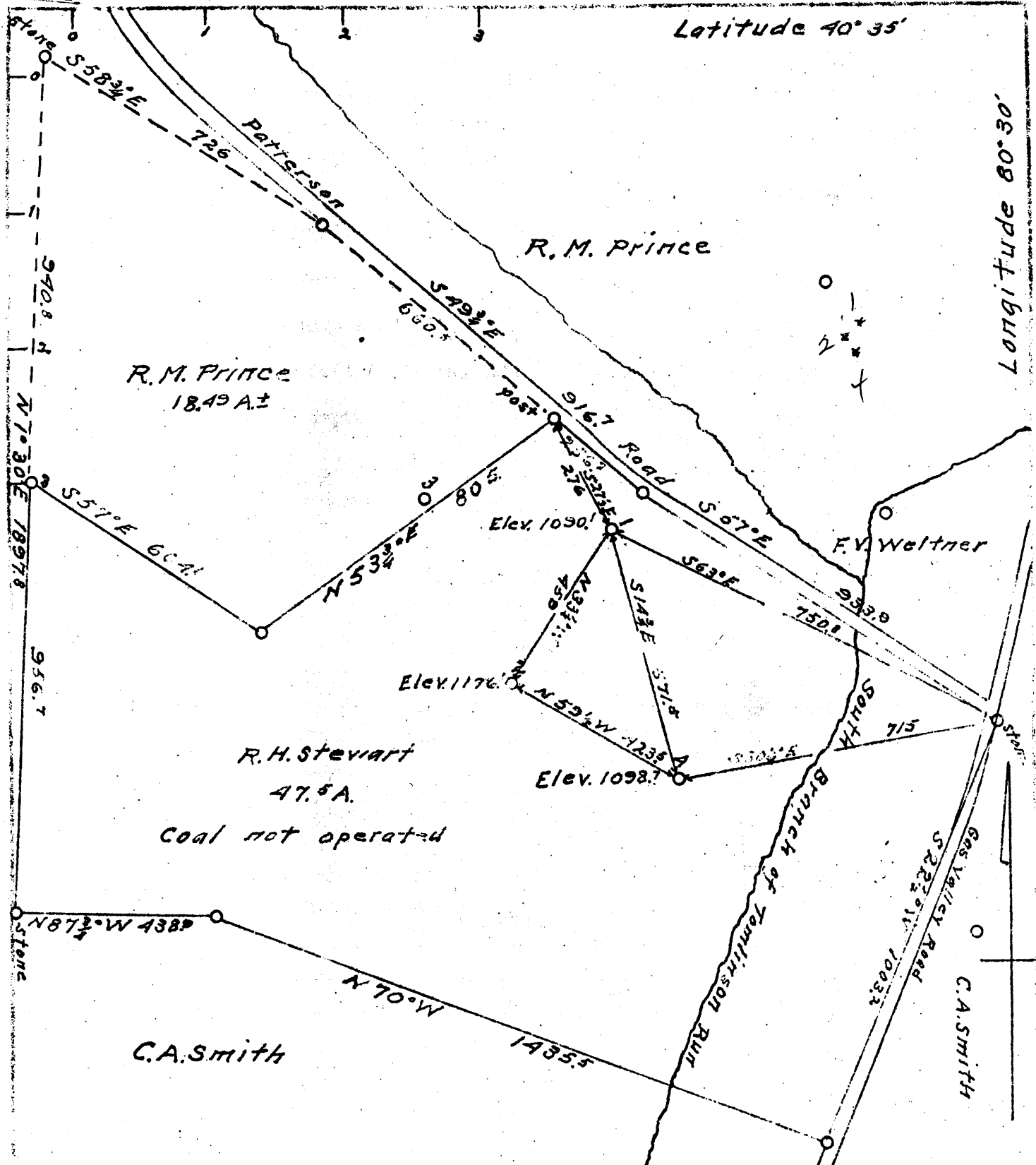
Topo Location

7.5' Loc. _____ 15' Loc. _____
 _____ (calc.) _____

Company John Munnay
 Farm RH Stewart #4
 15' Quad _____
 (sec.)
 7.5' Quad East Liverpool South
 District Clay

WELL LOCATION PLAT

County 029 Permit 30035



Company **JOHN MURRAY**
 Address **Chester, W.Va.**
 Farm **R.H. Stewart**
 tract **ONE** Acres **47.5±**
 Well (Farm) No **1, 2 & 4**
 Quadrangle **Wellsville S.W.**
 County **Hancock**
 District **Clay**
 Date **August 3, 1938**
 Scale **1 inch = 300 Feet**

1 { W 1.25' }
 { S 2.3 } 4 { W 1.28 }
 { } { S 2.55' }
 2 { W 1.35' }
 { S 2.45' }

File No. HAN-33A-35A
WELLS 1-2-4