

40°37'30"

Latitude

80°37'30"

Longitude

245s
38w

Topo Location

7.5' Loc. _____ 15' Loc. _____
(scale.) _____

Company RJ Bradom Co

Farm JC Hamilton #3

15' Quad _____
(sec.)

7.5' Quad Waldsville

District Grant

WELL LOCATION PLAT

County 029 Permit 30041

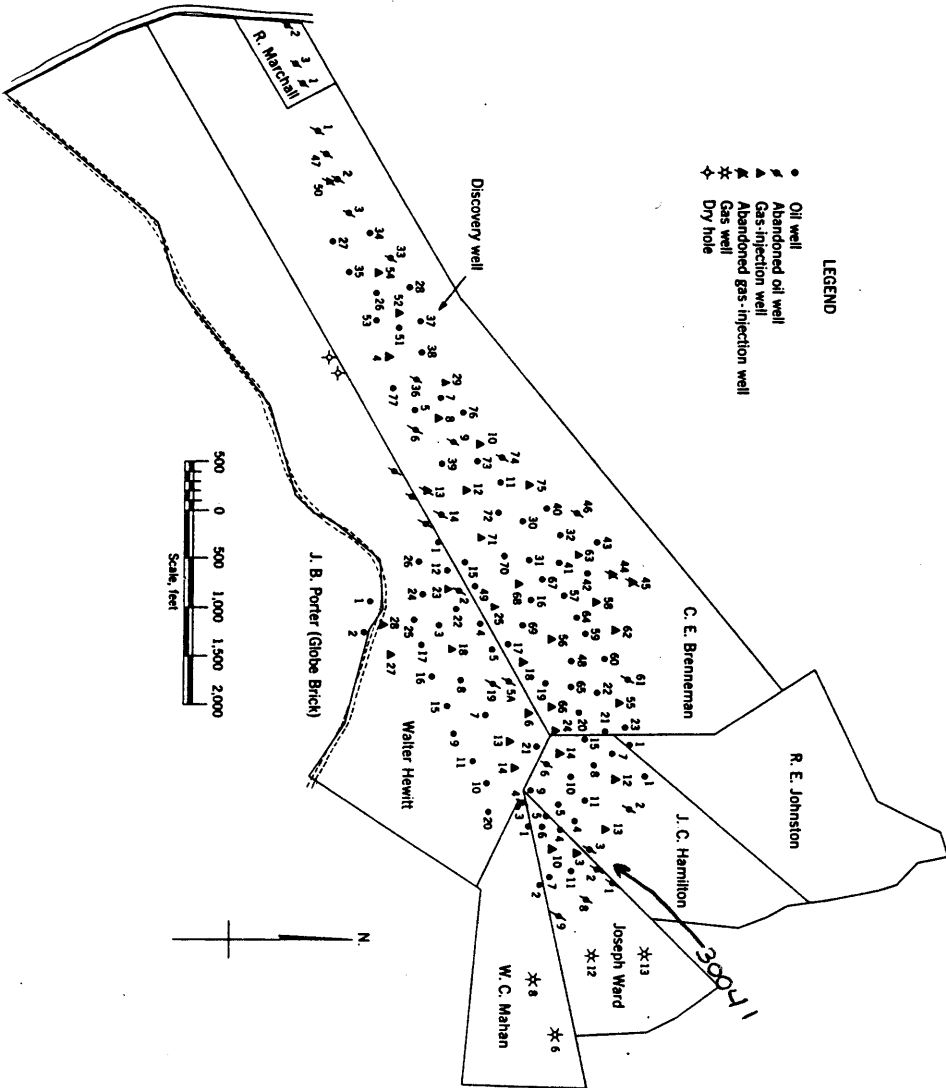
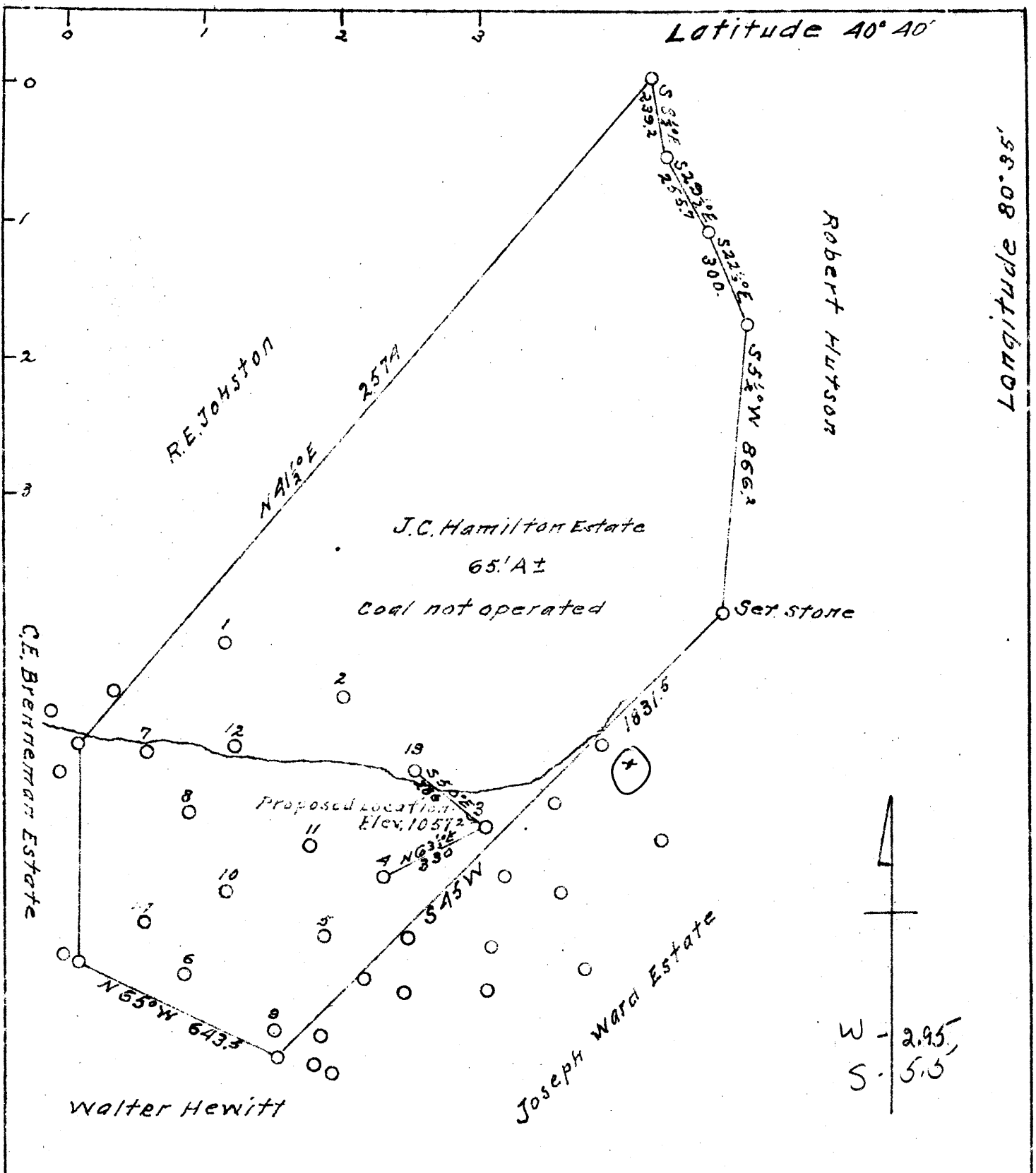


Figure 1. - Ownership map of Brennehan field, Hancock County, W. Va., showing location and status of wells on December 31, 1948.



Company R.J. Braden Co.
 Address Marietta Ohio
 Farm J.C. Hamilton Estate
 Tract One Acres 65.1± Lease No.
 Well (Farm) No. 3 Serial No.
 Quadrangle Wellsville
 County Hancock
 District Grant
 Engineer
 Engineer's Registration No.
 File No. Drawing No. Five
 Date Sept, 14, 1940
 Scale 1 inch = 400 Feet

STATE OF WEST VIRGINIA
 Department of Mines
 Oil and Gas Division
 Charleston

WELL LOCATION MAP
 File No. HAN-41 A

+ Denotes location of well on
 United States Topographic
 Maps, scale 1 to 62,500, latitude
 and longitude lines being
 represented by border lines
 as shown.

- Denotes one inch spaces on
 border lines of original tracing.