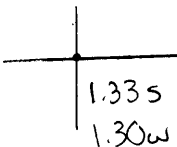


40°30'00"

Latitude

80°30'00"

Longitude



Top Location

7.5' Loc. _____ 15' Loc. _____
 _____ (calc.) _____

Company FM Anderson

Farm Stella M Anderson #6

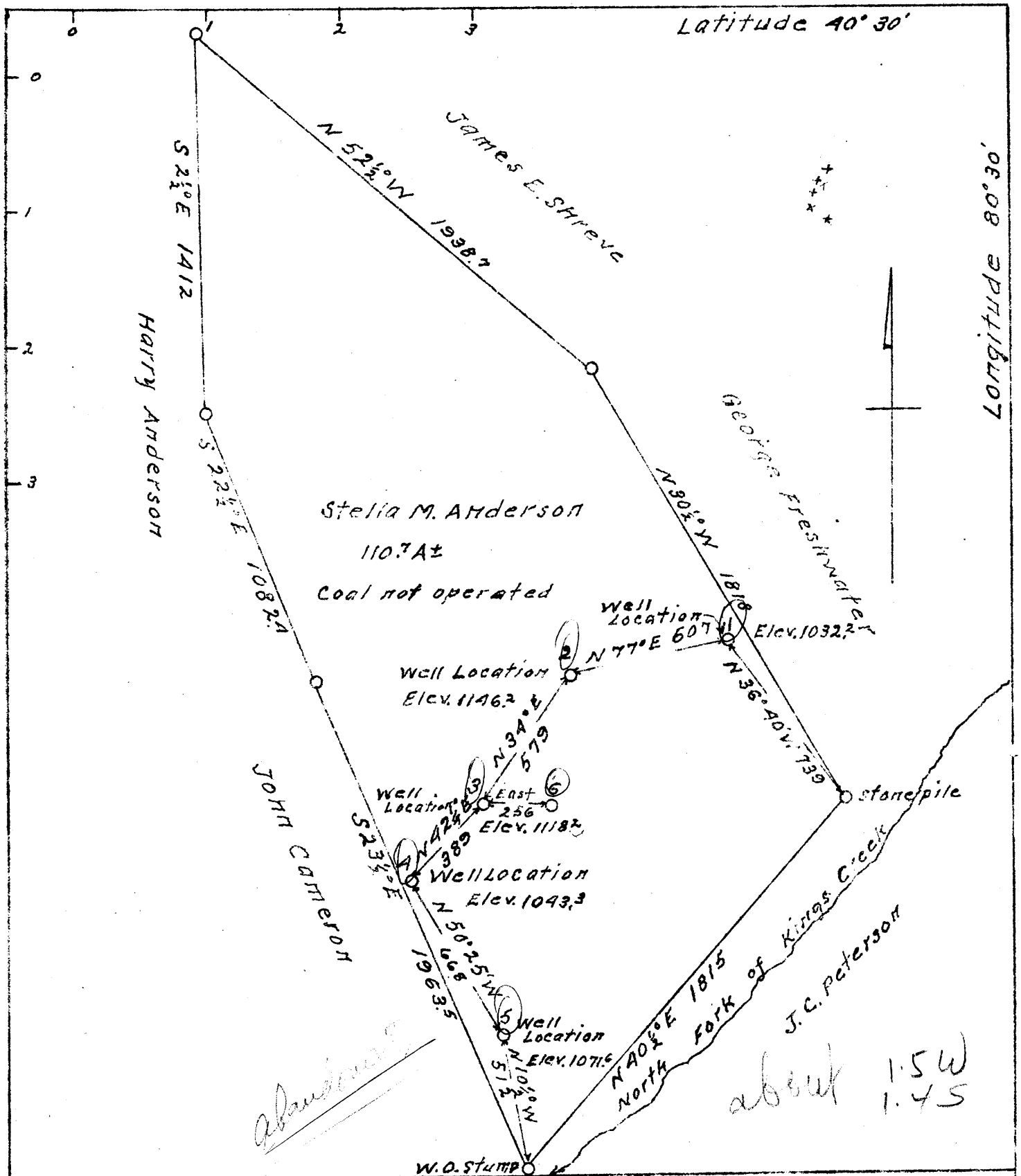
15' Quad _____
(sec.)

7.5' Quad Winton

District Clay

WELL LOCATION PLAT

County 029 Permit 30052



Company F. M. Anderson
 Address R. D. #1, New Cumberland, W. Va.
 Farm Stella M. Anderson
 Tract One Acres 110.7± Lease No.
 Well (Farm) Nos. 1, 2, 3, 4 & 5 Serial No.
 Quadrangle Steubenville NE
 County Hancock
 District Clay
 Engineer W. H. Ramp
 Engineer's Registration No. 386
 File No. Drawing No. One
 Date May 24, 1941.
 Scale 1 inch = 500 Feet

STATE OF WEST VIRGINIA
 Department of Mines
 Oil and Gas Division
 Charleston

WELL LOCATION MAP

File No. HAN-47-52-A NC.
 1-6 INC.

+ Denotes location of well on
 United States Topographic Maps
 scale 1 to 62,500, latitude and
 longitude lines being represented
 by border lines as shown.

- Denotes one inch spaces on
 border lines of original
 tracing.