

Latitude

Longitude

2.83s
1.18w

**Topo Location**

7.5' Loc. \_\_\_\_\_ 15' Loc. \_\_\_\_\_  
 \_\_\_\_\_ (calc.) \_\_\_\_\_

**Company** RJ Brandem Co

**Farm** CE Brenneman #6

**15' Quad** \_\_\_\_\_  
 (sec.)

**7.5' Quad** Wellsburg

**District** Grant

**WELL LOCATION PLAT**

**County** 029 **Permit** 30060

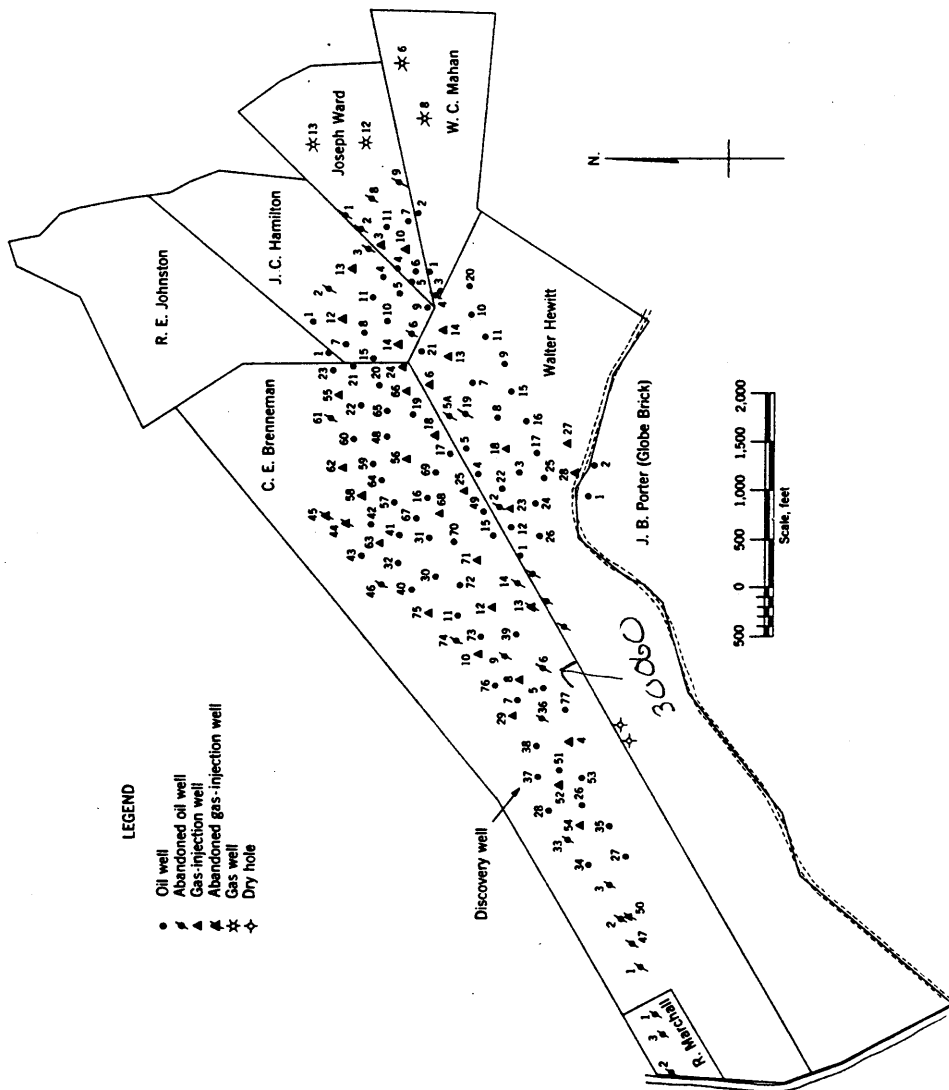
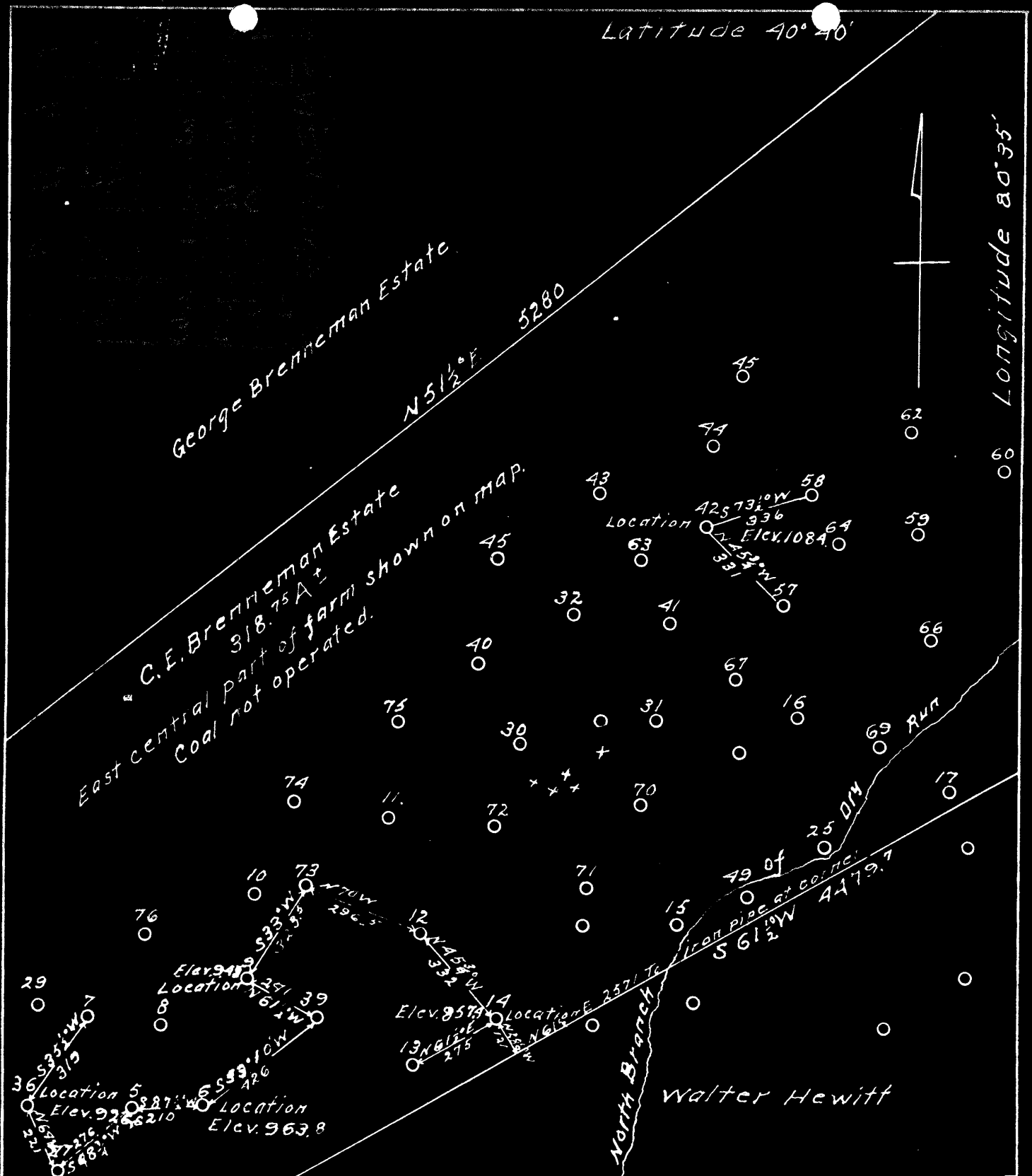


Figure 1. - Ownership map of Brennenman field, Hancock County, W. Va., showing location and status of wells on December 31, 1948.

Latitude 40° 40'

Longitude 80° 35'



Company R.J. Braden Co.  
 Address Marietta, Ohio  
 Farm C.E. Brenneman Estate  
 Tract One, Acres 318.75 ± Lease No.  
 Well (Farm) Nos. 63, 14, 36, 42. Serial No.  
 Quadrangle Wellsville  
 County Hancock  
 District Grant  
 Engineer W. H. Hake  
 Engineer's Registration No. 828  
 File No. Drawing No. Fourteen  
 Date July 30, 1943.  
 Scale 1 inch = 400 Feet

STATE OF WEST VIRGINIA  
 Department of Mines  
 Oil and Gas Division  
 Charleston

**WELL LOCATION MAP**

File No. HAN-60-A-#6

+ Denotes location of well on United States Topographic Maps, scale 1 to 62,500, latitude and longitude lines being represented by border lines shown.

- Denotes one inch spaces on border lines of original tracing.