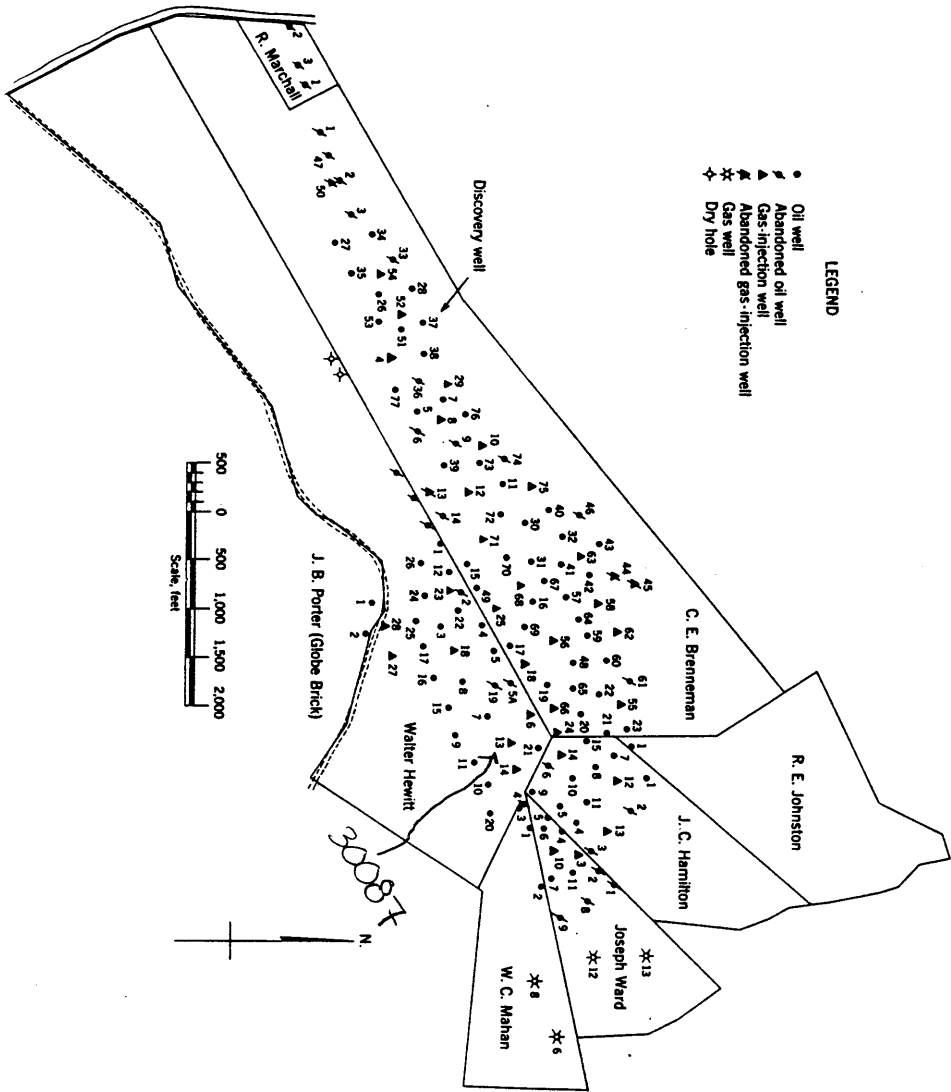
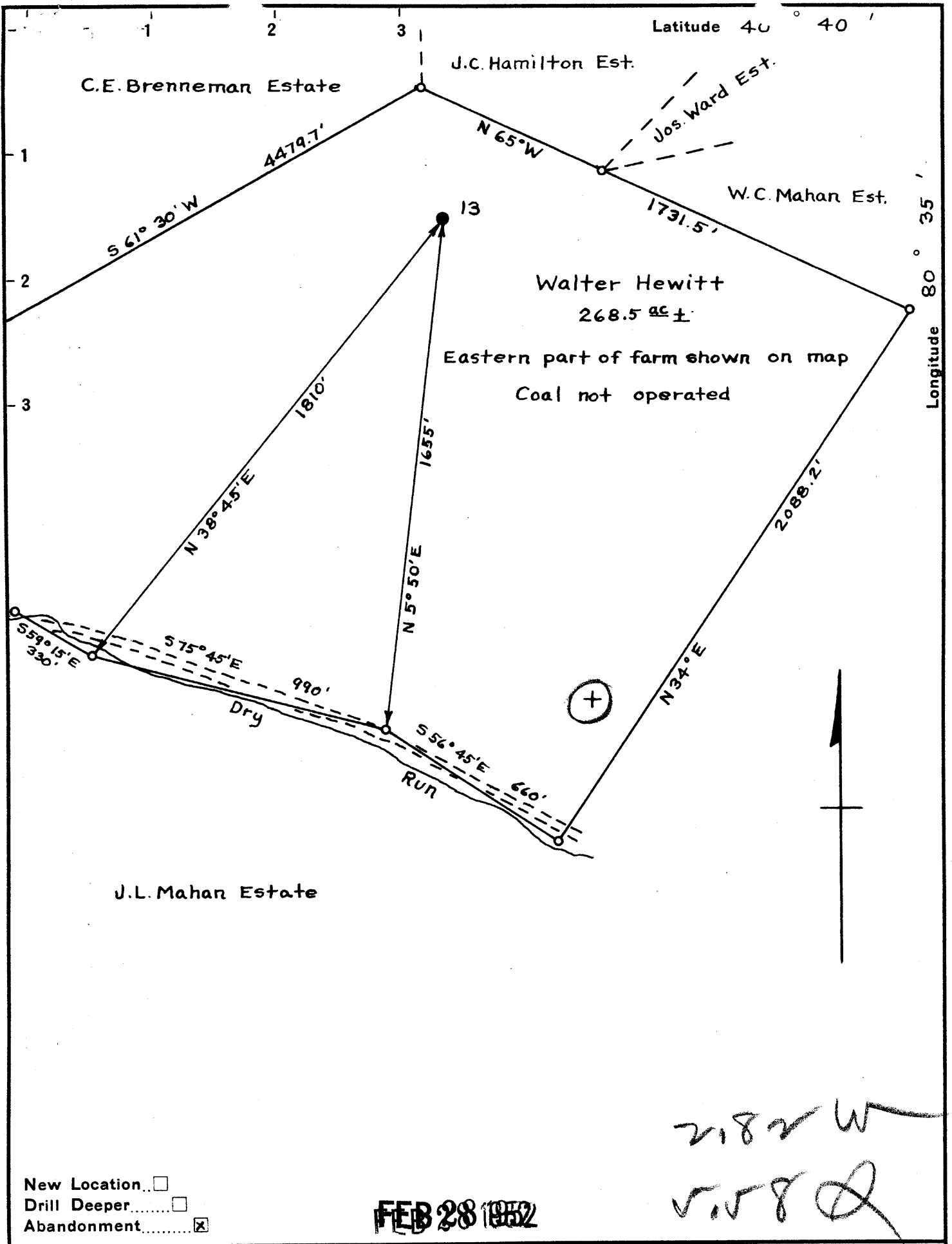




Figure 1. - Ownership map of Brenneman field, Hancock County, W. Va., showing location and status of wells on December 31, 1948.






New Location   
 Drill Deeper   
 Abandonment

**FEB 28 1952**

*2182 W*  
*5.158 Q*

Company	Dunnmar Oil & Gas Co. Bradford Supply Co.
Address	Bradford Pa.
Farm	Walter Hewitt
Tract	One Acres 268.5 ± Lease No. _____
Well (Farm) No.	13 Serial No. _____
Elevation (Spirit Level)	1150' 
Quadrangle	Wellsville
County	Hancock District Grant
Engineer	Benjamin F. Hoffacker <i>f</i>
Engineer's Registration No.	_____
File No.	_____ Drawing No. _____
Date	9-12-51 Scale 1" = 400'

STATE OF WEST VIRGINIA  
 DEPARTMENT OF MINES  
 OIL AND GAS DIVISION  
 CHARLESTON

**WELL LOCATION MAP**

FILE NO. HAN-87-A

+ Denotes location of well on United States Topographic Maps, scale 1 to 62,500, latitude and longitude lines being represented by border lines as shown.

- Denotes one inch spaces on border line of original tracing.

B.F.H., Jr.

WALTER HEWITT NO. 13 WELL.

Grant District, Hancock County, W. Va.  
By Dunn-Mar Oil & Gas Co., Waynesburg, Pa.  
Abandoned under permit Han-.....-A?  
On 268 acres, on Dry Run.  
Elevation, 1150' L.  
Date of completion, etc., not given.  
Shot at 1052-1035', with 60 qts.  
6 $\frac{1}{4}$ " casing, 785'.  
Oil well. Record to Dept. of Mines stamped Sept. 20, 1951.  
Record to RCT from Mrs. Griffith Jan. 16, 1952. Old File No. 47.

	Top.	Bottom.
Big Injun Sand		725 - 780
Berea Sand (bottom pay and shot, 1052')	1027-....	
Total depth		1090



STATE OF WEST VIRGINIA  
DEPARTMENT OF MINES  
OIL AND GAS DIVISION

47

WELL RECORD

Permit No. HAN-87-A

Oil or Gas Well Oil (KIND)

Company Dunn-Mar Oil and Gas Company  
 Address Waynesburg, Pa.  
 Farm Walter Heritt Acres 263  
 Location (waters) Dry Run  
 Well No. 13 Elev. 1150'  
 District Grant County Hancock  
 The surface of tract is owned in fee by \_\_\_\_\_  
 Address \_\_\_\_\_  
 Mineral rights are owned by \_\_\_\_\_  
 Address \_\_\_\_\_

Casing and Tubing	Used in Drilling	Left in Well	Packers
Size			Kind of Packer
16			
13			
10			Size of
8 1/4			
6 5/8			Depth set
5 3/16	<u>785'</u>	<u>785'</u>	
3			Perf. top
2			Perf. bottom
Liners Used			Perf. top
			Perf. bottom

Drilling commenced \_\_\_\_\_  
 Drilling completed \_\_\_\_\_  
 Date Shot From 1052' To 1035'  
 With 60 qts.  
 Open Flow /10ths Water in \_\_\_\_\_ Inch  
 /10ths Merc. in \_\_\_\_\_ Inch  
 Volume \_\_\_\_\_ Cu. Ft.  
 Rock Pressure \_\_\_\_\_ lbs. \_\_\_\_\_ hrs.  
 Oil \_\_\_\_\_ bbls., 1st 24 hrs.  
 Fresh water \_\_\_\_\_ feet \_\_\_\_\_ feet  
 Salt water \_\_\_\_\_ feet \_\_\_\_\_ feet

CASING CEMENTED \_\_\_\_\_ SIZE \_\_\_\_\_ No. Ft. \_\_\_\_\_ Date \_\_\_\_\_  
 COAL WAS ENCOUNTERED AT \_\_\_\_\_ FEET \_\_\_\_\_ INCHES  
 \_\_\_\_\_ FEET \_\_\_\_\_ INCHES FEET \_\_\_\_\_ INCHES  
 \_\_\_\_\_ FEET \_\_\_\_\_ INCHES FEET \_\_\_\_\_ INCHES

Formation	Color	Hard or Soft	Top	Bottom	Oil, Gas or Water	Depth Found	Remarks
Injun Sand			725	790			
Berea Sand			1027				
Bottom Pay and Shot				1052			
Bottom Hole				1090			



JAN 16 1952