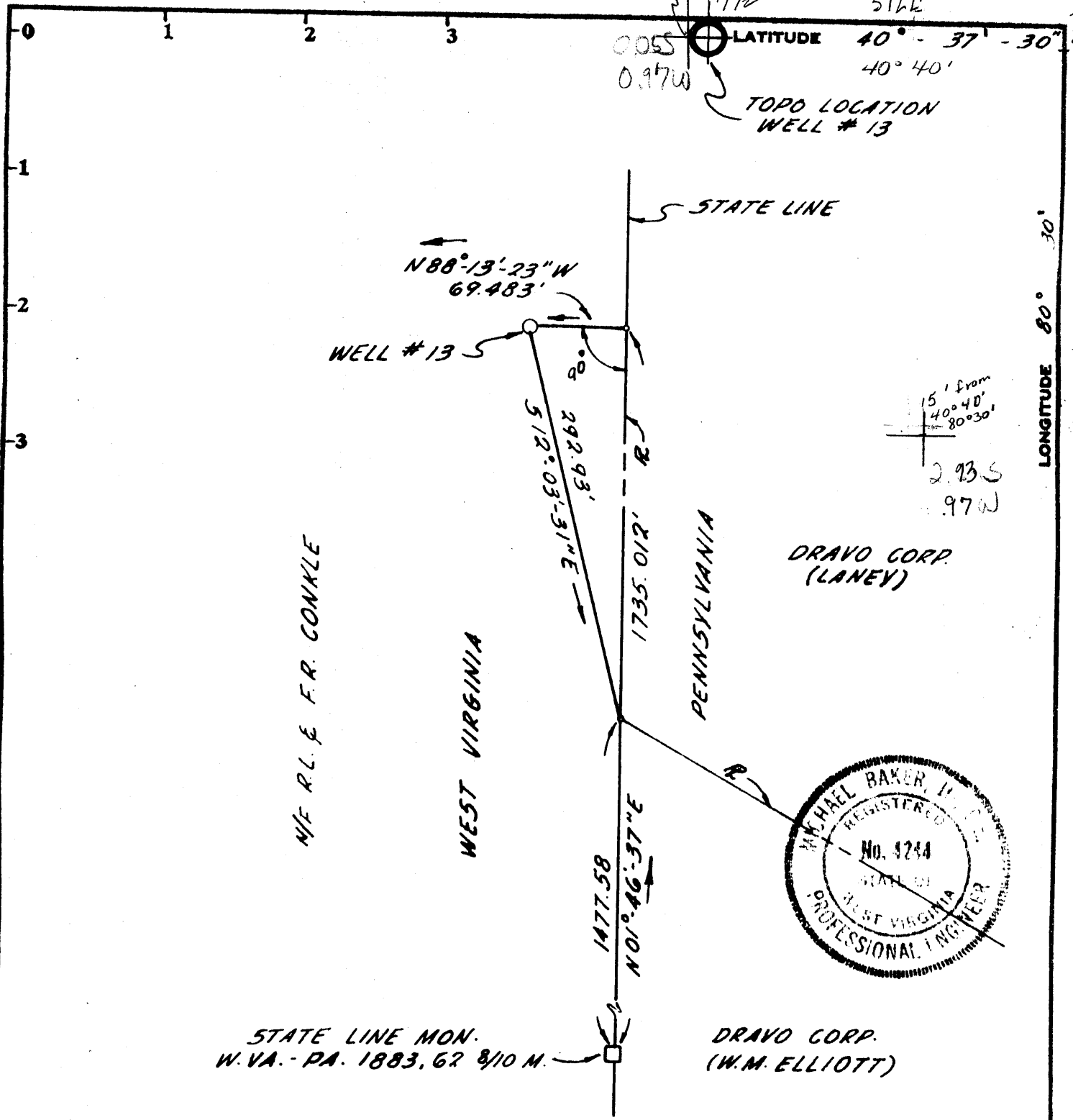


7.5
5122
7.5
264



STATE LINE MON.
W.VA. - PA. 1883, 62 8/10 M.

DRAVO CORP.
(W.M. ELLIOTT)

Minimum Error of Closure 1: 10,000
 Source of Elevation U.S.G.S. BM "TT 19 BR 1952-1149"
EL. 1149.303 (1929 SEA LEVEL DATUM)

- Fracture
- New Location
- Drill Deeper
- Abandonment

I, the undersigned, hereby certify that this map is correct to the best of my knowledge and belief and shows all the information required by paragraph 6 of the rules and regulations of the oil and gas section of the mining laws of West Virginia.

Signed: [Signature]
 Squares: N S E W

Company DRAVO CORPORATION
 Address NEVILLE 15. PGM, PA. 15225
P.O. B. F.R. CONKLE (D. Nic Blue Run Farm Development Area)
 Tract _____ Acres 121.0 Lease No. _____
 Well (Farm) No. 13 Serial No. EC
 Elevation (Spirit Level) GR. 7/6 1051.38' Wallowville 15'
 Quadrangle E. LIVERPOOL NORTH 7 1/2
 County HANCOCK District GRANT
 Engineer MICHAEL BAKER, III
 Engineer's Registration No. W.VA. 4244
 File No. _____ Drawing No. _____
 Date FEB. 26, 1974 Scale 1" = 100'

STATE OF WEST VIRGINIA
 DEPARTMENT OF MINES
 OIL AND GAS DIVISION
 CHARLESTON

WELL LOCATION MAP
 FILE NO. Ham-171-A

+ Denotes location of well on United States Topographic Maps, scale 1 to 62,500, latitude and longitude lines being represented by border lines as shown.

- Denotes one inch spaces on border line of original tracing.

47-029