

To BE REDRILLED UNDER  
 PERMIT - HAR - 354 - R  
 9-14-64

Map Sh. 56 S23 E16 FB. 534 P-15.

New Location   
 Drill Deeper   
 Abandonment

Company Hope Natural Gas Co.  
 Address Clarksburg, W. Va.  
 Farm W. M. Talbott  
 Tract \_\_\_\_\_ Acres 72 Lease No. 8508  
 Well (Farm) No. \_\_\_\_\_ Serial No. 5347  
 Elevation (Spirit Level) 1210'  
 Quadrangle Weston EC  
 County Harrison District Grant  
 Engineer W. M. Bowers  
 Engineer's Registration No. 900  
 File No. \_\_\_\_\_ Drawing No. \_\_\_\_\_  
 Date 1-30-50 Scale 1" = 600'

STATE OF WEST VIRGINIA  
 DEPARTMENT OF MINES  
 OIL AND GAS DIVISION  
 CHARLESTON

WELL LOCATION MAP  
 FILE NO. HAR - 1391A  
354-R

+ Denotes location of well on United States Topographic Maps, scale 1 to 62,500, latitude and longitude lines being represented by border lines as shown.  
 - Denotes one inch spaces on border line of original tracing.

"IMPERIAL" TRACING CLOTH  
 K & E CO., N. Y.



STATE OF WEST VIRGINIA  
DEPARTMENT OF MINES  
OIL AND GAS DIVISION

WELL RECORD

Permit No. Har-354-R

For Gas Well

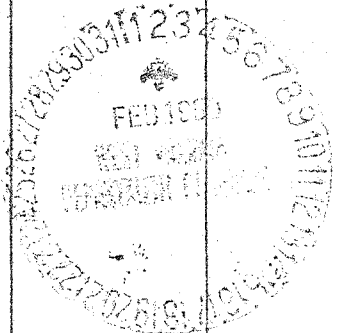
(KIND)

Company Hope Natural Gas Company  
Address 445 West Main St. Clarksburg, W. Va.  
Farm W.M. Talcott Acres 72  
Location (waters) \_\_\_\_\_  
Well No. 5347 Elev 1210  
District Grant County Harrison  
The surface of tract is owned in fee by \_\_\_\_\_  
Address \_\_\_\_\_  
Mineral rights are owned by \_\_\_\_\_  
Address \_\_\_\_\_  
Drilling commenced September 23, 1918  
Drilling completed November 2, 1918  
Date Shot \_\_\_\_\_ From \_\_\_\_\_ To \_\_\_\_\_  
With \_\_\_\_\_  
Open Flow \_\_\_\_\_ /10ths Water in \_\_\_\_\_ Inch  
\_\_\_\_\_ /10ths Merc. in \_\_\_\_\_ Inch  
Volume \_\_\_\_\_ Cu. Ft.  
Rock Pressure \_\_\_\_\_ lbs. \_\_\_\_\_ hrs.  
Oil \_\_\_\_\_ bbls., 1st 24 hrs.  
Fresh water 65 feet \_\_\_\_\_ feet  
Salt water 970 1674 feet \_\_\_\_\_ feet

Casing and Tubing	Used in Drilling	Left in Well	Packers
Size			Kind of Packer
16			
13			
10	255	255	Size of
8 3/4	1383	1383	
6 5/8	2120	2120	Depth set
5 3/16			
3			Perf. top
2	2212	2212	Perf. bottom
Liners Used			Perf. top
			Perf. bottom

CASING CEMENTED \_\_\_\_\_ SIZE \_\_\_\_\_ No. Ft. \_\_\_\_\_ Date \_\_\_\_\_  
COAL WAS ENCOUNTERED AT \_\_\_\_\_ FEET \_\_\_\_\_ INCHES  
\_\_\_\_\_ FEET \_\_\_\_\_ INCHES  
\_\_\_\_\_ FEET \_\_\_\_\_ INCHES

Formation	Color	Hard or Soft	Top	Bottom	Oil, Gas or Water	Depth Found	Remarks
Little Dunkard			275	305	water	65	
Big Dunkard			335	415			
Gas sand			457	517			
First Salt			655	765			
Second Salt			780	975	water	970	
Maxon			1163	1181			
Little Lime			1266	1295			
Pencil cave			1295	1300			
Big Lime			1300	1360	gas	1328	
Big Injun			1360	1487	gas	1474	
Squaw			1550	1590			
Berea			1608	1616			
Gantz			1664	1730	water	1674	
Fifty foot			1742	1848			
Thirty foot			1850	1900			
Gordon stray			1929	1938			
Gordon			1950	2015			
Fourth			2115	2121			
Fifth			2190	2212	gas	2192	
Total depth				2212			



# Hope Natural Gas Company

## WELL RECORD

COPY FILE

Well No. 5347 Farm Name W. M. Talbott HAR-354 R Lost Creek Construction District N S 23 E 16 W

Date First Work Done 7-22-64 Nature of Work Moved in rotary rig.

Commenced: 7-24-64 Completed: 11-12-64

Cleaning Out 7-24-64 Cleaning Out 11-12-64

Drilling Deeper \_\_\_\_\_ Drilling Deeper \_\_\_\_\_

Abandoning \_\_\_\_\_ Abandoning \_\_\_\_\_

### CASING AND TUBING RECORD

Size	Below Repairs		Pulled		Put In Well		After Repairs		Weight
	Tally	Steel Line	Tally	Steel Line	Tally	Steel Line	Tally	Steel Line	
10-3/4"		* 165			82	81	247	246	32.75
7"					1650	1640	1650	1640	20.00

\* Found in abt. hole.

### RECORD OF TREATING FORMATIONS

Date	Sand	DEPTH		TEST BEFORE			TEST AFTER					
		From	To	Read.	Liq.	Opn.	Read.	Liq.	Opn.	Hrs.		
	Not Shot											

ACIDIZED	Gallons	Acid Used	ACIDIZED BY
Not Acidized			

See Reverse Side for Gamma Ray

HYDRAFRAC	Bble.	Lbs.	Agent	Max. Press.	HYDRAFRAC BY			
					Breakdown	Treating	Flushing	Flushing
Not frac		X						
	X	X						
		X						
		X						
	X	X						
		X						

### RECORD OF ANY DEEPER DRILLING

### PACKER RECORD

Formation	Top	Bottom	Oil at	Gas at	Size	Kind	Set at (Steel Line)
Commenced drilling at Depth of					7"	Steel Shoe	1640'
drilled to depth of 1890							
plugged back to	1678						
Total Depth	1678'						

Size	Kind	Estimated	bbl. per day	Sand

### VOLUME AND PRESSURE REPORT BEFORE CLEANING OUT (Take Test When Ready to Clean Out)

Date of Test	Flow Meter or Open Flow				CUBIC FEET	Sands Gas From	Time Blown
		Reading	Liquid Used	Opening			

### AFTER CLEANING OUT

Date of Test	Flow Meter or Open Flow				CUBIC FEET	Sands Gas From	Time Blown
		Reading	Liquid Used	Opening			

### AFTER DRILLING OR RE-DRILLING

Date of Test	Flow Meter or Open Flow				CUBIC FEET	Sands Gas From	Time Blown
		Reading	Liquid Used	Opening			
11-12-64	FM	24/10	Water	1/4"	2 M.	Gantz	

### PRESSURE TEST

### ROCK

Date of Test	Opening	1/2 Min.	2 Min.	3 Min.	4 Min.	5 Min.	10 Min.	30 Min.	60 Min.	Hrs.	Lbs.	Days	Lbs.
11-12-64	7" casing				None Taken					45	168		
	" Tubing												

*A. L. Davis*

REMARKS  
WELL 5347

Moved in rotary 7-22-64. C.O. to 81'. Found top of old 10" casing left in hole. Ran 81' of 10" casing on steel nipple and screwed on to old 10" casing and cemented to surface with 70 bags cement. C.O. to 1890'. Ran Gamma Ray, Section Gauge and Collar Locator. Gantz Sand 1648-77'. Abandoned lower hole to 1695' with 58 bags cement. Set Baker bridge plug at 1650' with 1 bag cal seal on top. Ran 1640' of 7" casing and cemented to surface with 307 bags cement. Moved rotary out 7-28-64. Moved in spudder 10-28-64. C.O. to 1697' before finding good cement. Brought cement up to 1686' with 4 bags. Ran hydromite from 1686' to 1678'. T.D. 1678'. Bailed well off. Gas test 24/10 W 1/4" F.M. or 2 M. Rock pressure 168# in 45 hours. Well made 350' of water in 45 hours. There will be a free consumer account of this well. Shut in on 7" casing.

Well re-drilled by Pace Bower Construction Co. rotary rig.

Drillers: Sidney Roles  
Alvin Workman  
Marvin Wilson

Helpers: Dallie Lambert  
Roger Powell  
Kenneth Efav

Tool Pusher: George Cobb

Report Made By:  
F. M. Cottrill, Jr.  
11-23-64

From Gamma Ray Log - #5347

1st Salt Sand	657-762
3rd Salt Sand	862-965
Little Lime	1251-1274
Big Lime	1291-1360
Big Injun	1360-1471
Gantz Sand	1648-1677
Gantz "A" Sand	1685-1724
Total Depth	1678'

PACKER RECORD

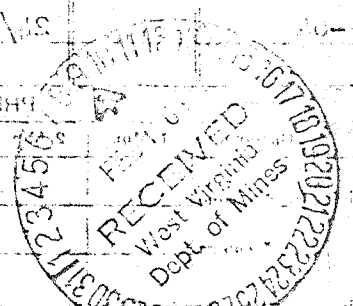
Kind	Size
Steel Shoe	7"
PACKER PULLED	
Kind <th>Size</th>	Size
OIL PRODUCTION	

VOLUME AND PRESSURE REPORT  
BEFORE CLEANING OUT (This Test When Ready to Clean Out)

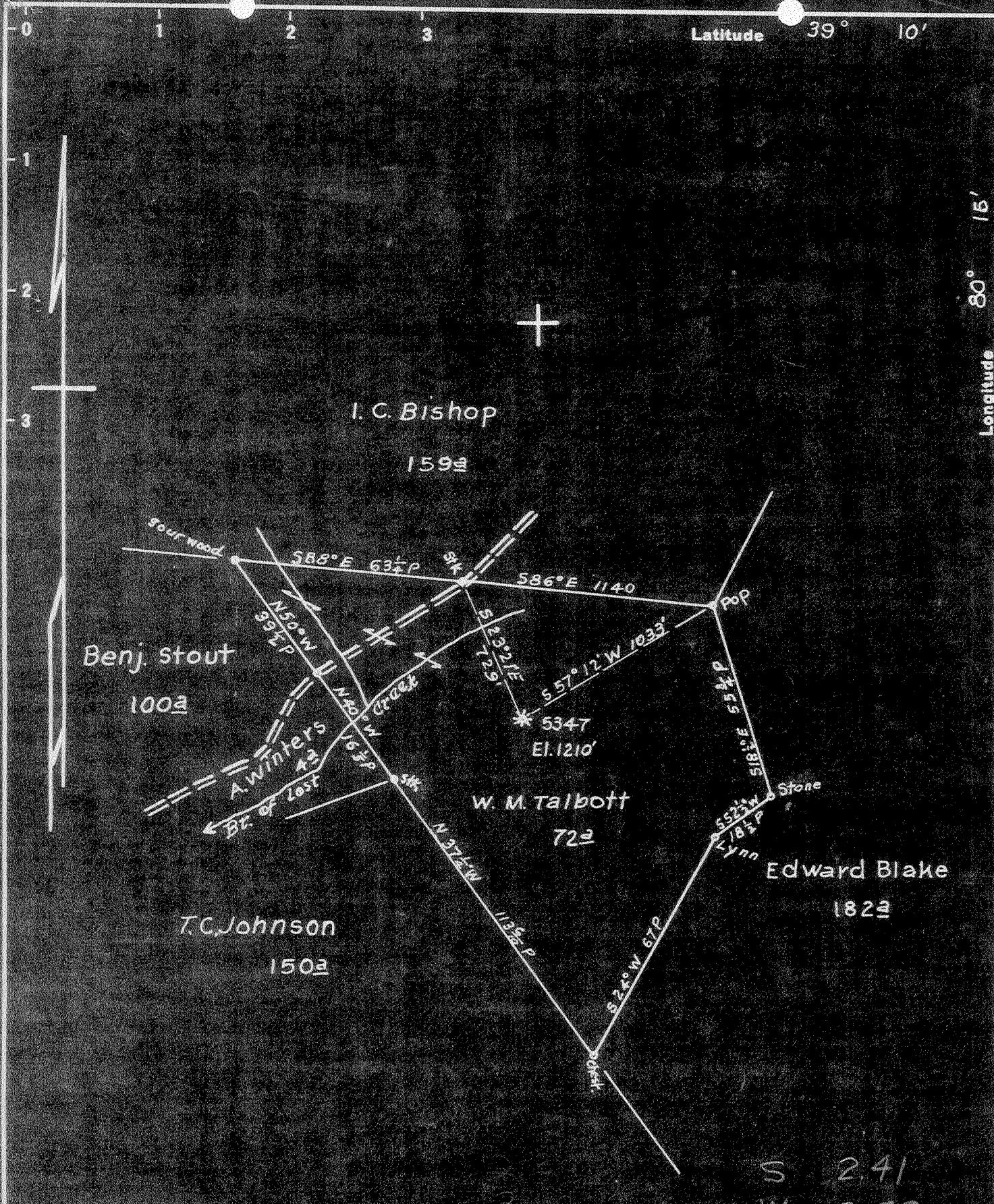
Date of Test	Time of Test	Liquid Used	Flowing	Pressure	AFTER CLEANING OUT		AFTER DRILLING OUT	
					Cubic Feet	Pressure	Cubic Feet	Pressure

HOOK

Days	Pressure	Flow
1st	168	
2nd	168	







New Location   
 Drill Deeper   
 Abandonment

S 2.41  
 W 3.52

Map Sh. 56 S23 E16 FB. 534 P-15.

Company	Hope Natural Gas Co.
Address	Clarksburg, W. Va.
Farm	W. M. Talbott
Tract	Acres 72 Lease No. 8508
Well (Farm) No.	Serial No. 5347
Elevation (Spirit Level)	1210'
Quadrangle	Weston
County	Harrison District Grant
Engineer	W. M. Bowers
Engineer's Registration No.	900
File No.	Drawing No.
Date	1-30-50 Scale 1"=600'

STATE OF WEST VIRGINIA  
 DEPARTMENT OF MINES  
 OIL AND GAS DIVISION  
 CHARLESTON

**WELL LOCATION MAP**  
 FILE NO. HAR-1391-A

+ Denotes location of well on United States Topographic Maps, scale 1 to 62,500, latitude and longitude lines being represented by border lines as shown.

- Denotes one inch spaces on border line of original tracing.



STATE OF WEST VIRGINIA  
DEPARTMENT OF MINES  
OIL AND GAS DIVISION

1208

Permit No. HAR-1391A

WELL RECORD

Oil or Gas Well (KIND)

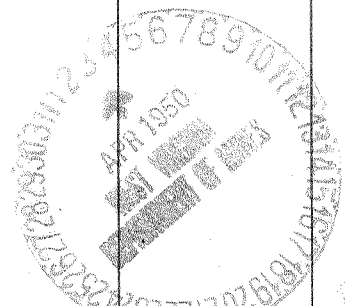
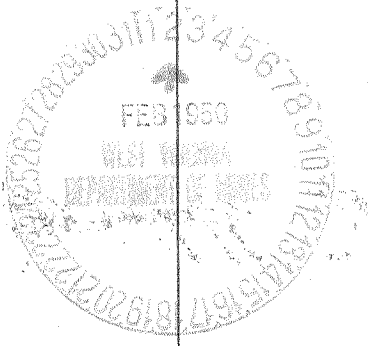
Company Hope Natural Gas Company.  
Address 445 West Main St. Clarksburg, W. Va.  
Farm W.M. Talbott Acres 72  
Location (waters) \_\_\_\_\_  
Well No. 5347 Elev. 1210  
District Grant, County Harrison  
The surface of tract is owned in fee by \_\_\_\_\_  
Address \_\_\_\_\_  
Mineral rights are owned by \_\_\_\_\_  
Address \_\_\_\_\_  
Drilling commenced September 23, 1918  
Drilling completed November 2, 1918  
Date Shot \_\_\_\_\_ From \_\_\_\_\_ To \_\_\_\_\_  
With \_\_\_\_\_

Casing and Tubing	Used in Drilling	Left in Well	Packers
Size			
16			Kind of Packer
18			
10	255	255	Size of
8 1/2	1383	1383	
6 5/8	2120	2120	Depth set
5 3/16			
3			Perf. top
2	2212	2212	Perf. bottom
Liners Used			Perf. top
			Perf. bottom

Open Flow \_\_\_\_\_ /10ths Water in \_\_\_\_\_ Inch  
\_\_\_\_\_ /10ths Merc. in \_\_\_\_\_ Inch  
Volume \_\_\_\_\_ Cu. Ft.  
Rock Pressure \_\_\_\_\_ lbs. \_\_\_\_\_ hrs.  
Oil \_\_\_\_\_ bbls., 1st 24 hrs.  
Fresh water 65 feet \_\_\_\_\_ feet  
Salt water 970 1674 feet \_\_\_\_\_ feet

CASING CEMENTED \_\_\_\_\_ SIZE \_\_\_\_\_ No. Ft. \_\_\_\_\_ Date \_\_\_\_\_  
COAL WAS ENCOUNTERED AT \_\_\_\_\_ FEET \_\_\_\_\_ INCHES  
\_\_\_\_\_ FEET \_\_\_\_\_ INCHES FEET \_\_\_\_\_ INCHES  
\_\_\_\_\_ FEET \_\_\_\_\_ INCHES FEET \_\_\_\_\_ INCHES

Formation	Color	Hard or Soft	Top	Bottom	Oil, Gas or Water	Depth Found	Remarks
Little Dunkard			275	305	water	65	
Big Dunkard			335	415			
Gas sand			457	517			
First Salt			655	765			
Second Salt			780	975	water	970	
Maxon			1163	1181			
Little Lime			1266	1295			
Pencil cave			1295	1300			
Big Lime			1300	1360	gas	1328	
Big Injun			1360	1487	gas	1474	
Squaw			1550	1590			
Berea			1608	1616			
Gantz			1664	1730	water	1674	
Fifty foot			1742	1848			
Thirty foot			1850	1900			
Gordon stray			1929	1938			
Gordon			1950	2015			
Fourth			2115	2121			
Fifth			2190	2212	gas	2192	
Total depth				2212			



Formation	Color	Hard or Soft	Top	Bottom	Oil, Gas or Water	Depth Found	Remarks

Date January 30, 1950, 19\_\_

APPROVED Hope Natural Gas Company., Owner

By \_\_\_\_\_

(Title) *JH*

1391A

Grant District, Harrison County, W. Va.  
 By Hope Natural Gas Co., 445 E. Main St., Clarksburg, W. Va.  
 Abandoned under permit Her-..... A?

On 72 acres.

Elevation, 1210' L.

Drilling commenced Sept. 23, 1918; completed Nov. 2, 1918.

Fresh water at 65'.

Salt water at 970 and 1674'.

10" casing, 255'; 8 1/2", 1383'; 6 3/4", 2120'; 2" tubing, 2212'; all left in.

Casing not cemented.

Starts below coal.

Gas well. Record to Dept. of Mines dated Jan. 30, 1950.

Record to RCF from Mrs. Griffith May 26, 1950. Old File No. 1208.

	Top.	Bottom.
(water, 65')		
Little Bankard Sand	275	305
Big Bankard Sand	335	415
Gas Sand	457	517
First Salt Sand	655	765
Second Salt Sand (water, 970')	780	975
Maxton Sand	1163	1181
Little Lime	1266	1295
Pencil Cave	1295	1300
Big Lime (gas, 1328')	1300	1360
Big Injun Sand (gas, 1474')	1360	1487
Squaw Sand	1550	1590
Berea Sand	1608	1616
Quartz Sand (water, 1674')	1664	1770
Fifty-foot Sand	1742	1843
Thirty-foot Sand	1850	1900
Gordon Stroy Sand	1929	1938
Gordon Sand	1950	2015
Fourth Sand	2115	2121
Fifth Sand (gas, 2192')	2190	2212
Total depth		2212