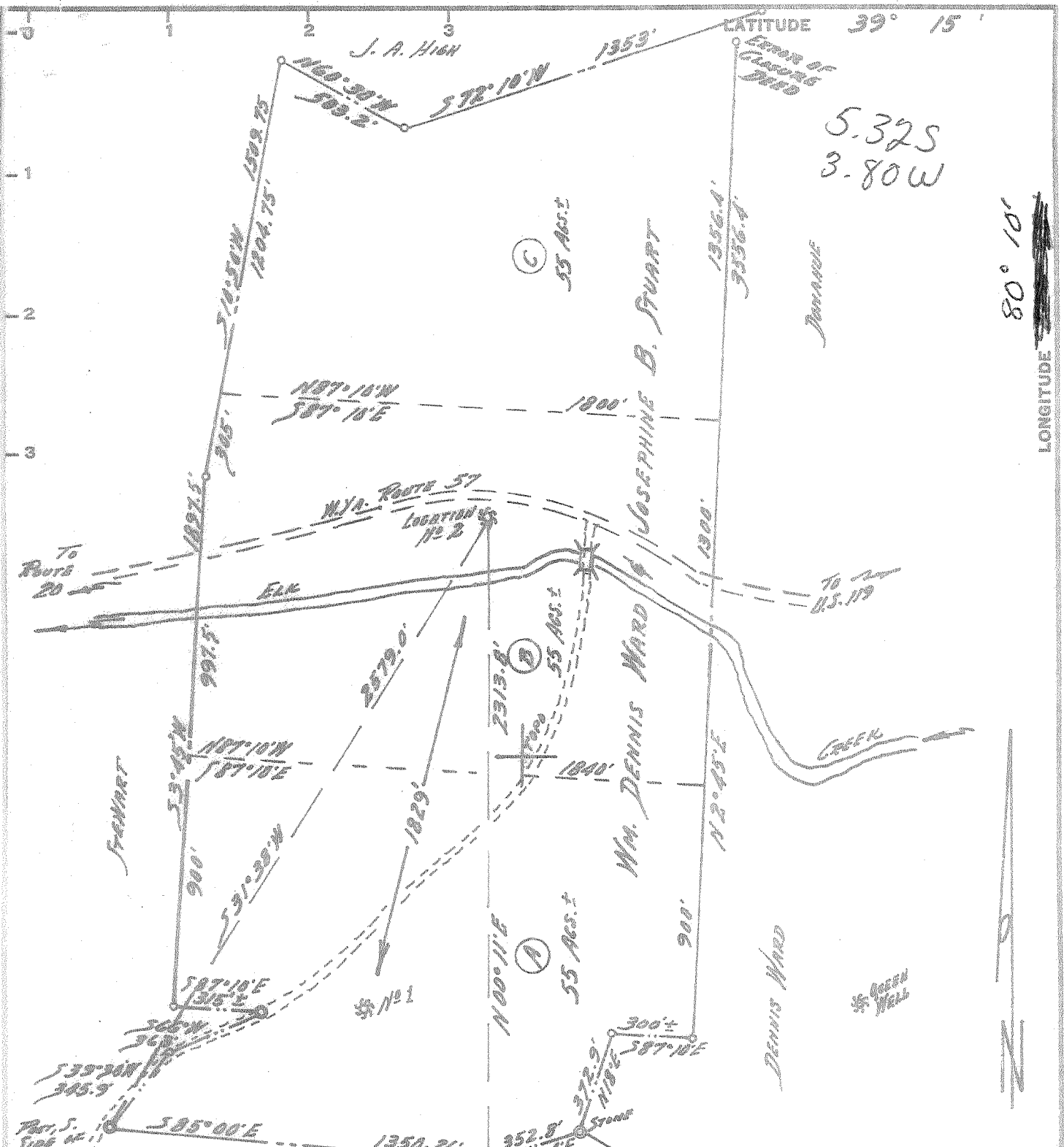




10-3-66-25p



THE UNDERSIGNED HEREBY CERTIFY THAT THIS MAP IS CORRECT TO THE BEST OF HIS KNOWLEDGE AND BELIEF AND SUPPLIES THE INFORMATION REQUIRED BY PARAGRAPH 5 OF THE RULES AND REGULATIONS OF THE OIL AND GAS SECTION OF THE MINING LAWS OF WEST VIRGINIA.

By Paul G. Dean

- New Location.....
- Drill Deeper.....
- Abandonment.....

B.M. REF. = BRIDGE XING ELK CREEK = 350'± EAST OF LOCATION  
 MINIMUM ERROR OF CLOSURE 1/2,000

Company STYDAR OIL & GAS CO.  
 Address 116 SOUTH 5TH ST., CLARKSBURG, W.VA.  
 Farm WM. DENNIS WARD & JOSEPHINE B. STUART  
 Tract B Acres 55 of 155 Lease No. \_\_\_\_\_  
 Well (Farm) No. 100 Serial No. \_\_\_\_\_  
 Elevation (Spirit Level) 1017  
 Quadrangle PHILIPPI - NW  
 County HARRISON District ELK  
 Engineer Paul G. Dean  
 Engineer's Registration No. 1856  
 File No. 136-8-20 Drawing No. 66-88  
 Date SEPT. 22, 1966 Scale 1" = 500'

STATE OF WEST VIRGINIA  
 DEPARTMENT OF MINES  
 OIL AND GAS DIVISION  
 CHARLESTON

WELL LOCATION MAP  
 FILE NO. HARA-437

- + Denotes location of well on United States Topographic Maps, scale 1 to 62,500, latitude and longitude lines being represented by border lines as shown.
- Denotes one inch spaces on border line of original tracing.



STATE OF WEST VIRGINIA  
DEPARTMENT OF MINES  
OIL AND GAS DIVISION

Rotary   
Spudder   
Cable Tools   
Storage

Quadrangle Philippi  
Permit No. Har-437

WELL RECORD

Oil or Gas Well \_\_\_\_\_ (KIND)

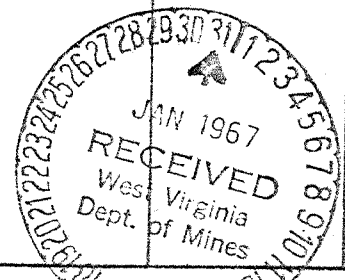
Company Stydaher Oil & Gas Co.  
Address 116 S. 5th. St., Clarksburg, W. Va.  
Farm Wm. Dennis Ward Acres 55  
Location (waters) Elk Creek  
Well No. 2 Elev. 1017  
District Elk County Harrison  
The surface of tract is owned in fee by Wm. Dennis Ward  
Address R. 1 Mt. Clare, W. Va.  
Mineral rights are owned by Same  
Address \_\_\_\_\_  
Drilling commenced Oct. 12, 1966  
Drilling completed Jan. 18, 1967  
Date Shot \_\_\_\_\_ From \_\_\_\_\_ To \_\_\_\_\_  
With \_\_\_\_\_  
Open Flow \_\_\_\_\_ /10ths Water in \_\_\_\_\_ Inch  
\_\_\_\_\_ /10ths Merc. in \_\_\_\_\_ Inch  
Volume None Cu. Ft.  
Rock Pressure \_\_\_\_\_ lbs. hrs.  
Oil None bbls., 1st 24 hrs.  
WELL ACIDIZED (DETAILS) \_\_\_\_\_  
WELL FRACTURED (DETAILS) \_\_\_\_\_

Casing and Tubing	Used in Drilling	Left in Well	Packers
Size			Kind of Facker
16	18ft.		
13	203		
10	814		Size of
8 1/4	1400		Depth set
5 3/16			
4 1/2			
3			Perf. top
2			Perf. bottom
Liners Used			Perf. top
			Perf. bottom

Attach copy of cementing record.  
CASING CEMENTED \_\_\_\_\_ SIZE \_\_\_\_\_ No. Ft. \_\_\_\_\_ Date \_\_\_\_\_  
Amount of cement used (bags) \_\_\_\_\_  
Name of Service Co. \_\_\_\_\_  
COAL WAS ENCOUNTERED AT 549 FEET 12 INCHES  
\_\_\_\_\_ FEET \_\_\_\_\_ INCHES \_\_\_\_\_ FEET \_\_\_\_\_ INCHES  
\_\_\_\_\_ FEET \_\_\_\_\_ INCHES \_\_\_\_\_ FEET \_\_\_\_\_ INCHES

RESULT AFTER TREATMENT (Initial open Flow or bbls.) \_\_\_\_\_  
ROCK PRESSURE AFTER TREATMENT \_\_\_\_\_ HOURS  
Fresh Water 30, 345 Feet Salt Water 1383 Feet  
Producing Sand None Depth \_\_\_\_\_

Formation	Color	Hard or Soft	Top	Bottom	Oil, Gas or Water	Depth	Remarks
Surface Shale	Brown Gray	Soft	0	20	Water	30	
Sand	White	Hard	20	210			
Shale	Gray	Soft	210	229			
Lime	"	Hard	229	340			
Sand	"	"	340	360	Water	345	
Shale shells	"	Soft	360	404			
Coal	Black	"	404	549	Gas	850	Show
Lime	Gray	Hard	549	550			
Sand	"	"	550	722			
Shale	"	Soft	722	800			
Sand	"	Hard	800	833			
Shale	"	Soft	833	860			
Red Rock	Red	"	860	1025			
Lime	Gray	Hard	1025	1130			
Shale	"	Soft	1130	1180			
Lime	"	Hard	1180	1302			
Red Rock	Red	Soft	1302	1317	Water	1383	1/2 Blr. P. Hr
Big Lime	Gray	Hard	1317	1362			
Sand	Dark	"	1362	1470			
Shale	Gray	Soft	1470	1523			
Sand	Dark	Hard	1523	1525			
Shale	Gray	Soft	1525	1540			
Sand	Dark	Hard	1540	1720			
Shale	Gray	Soft	1720	1770			
Sand	Dark	Hard	1770	2260			
Shale	Gray	Soft	2260				



Formation	Color	Hard or Soft	Top	Bottom	Oil, Gas or Water	Depth Found	Remarks
Sand	Dark	Hard	2260	2295			
Shale	Gray	Soft	2295	2620			
Shale with Shells	"	Hard	2620	2900			
Shale with Shells	"	"	2900	3840			
Sand and Shells	"	"	3840	4275			
Shale	"	Soft	4275	4444	(Total Depth)	4444	

Date \_\_\_\_\_, 19\_\_\_\_

APPROVED \_\_\_\_\_, Owner

By \_\_\_\_\_ (Title)