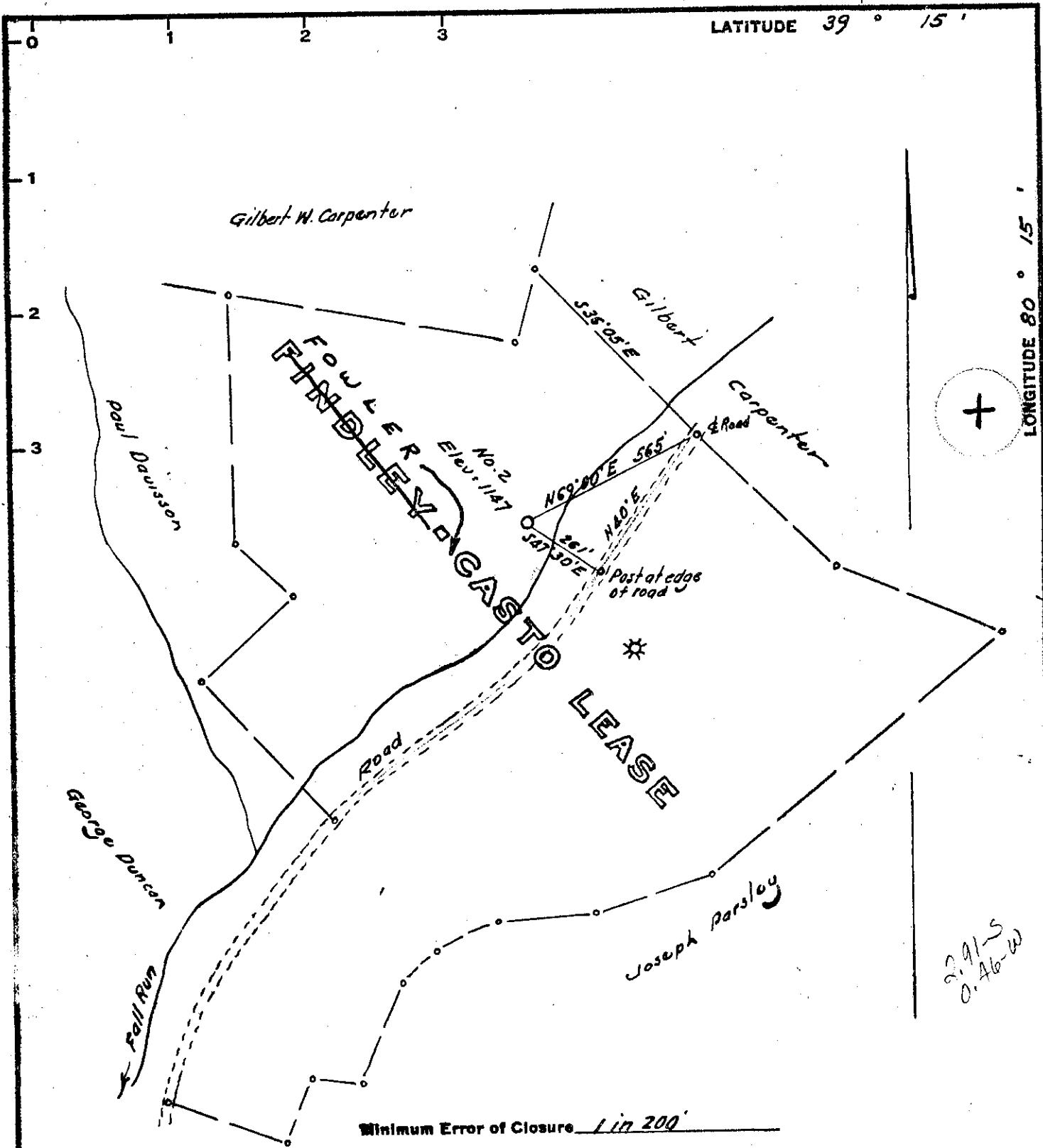


1/20/69 GEN



LATITUDE 39° 15'

LONGITUDE 80° 15'

Minimum Error of Closure 1 in 200'

Source of Elevation Elevation Davisson No. 1 = 1121

I, the undersigned, hereby certify that this map is correct to the best of my knowledge and belief and shows all the information required by paragraph 6 of the rules and regulations of the oil and gas section of the mining laws of West Virginia.

Fracture
 New Location
 Drill Deeper
 Abandonment

Map No. issued 5-7-69

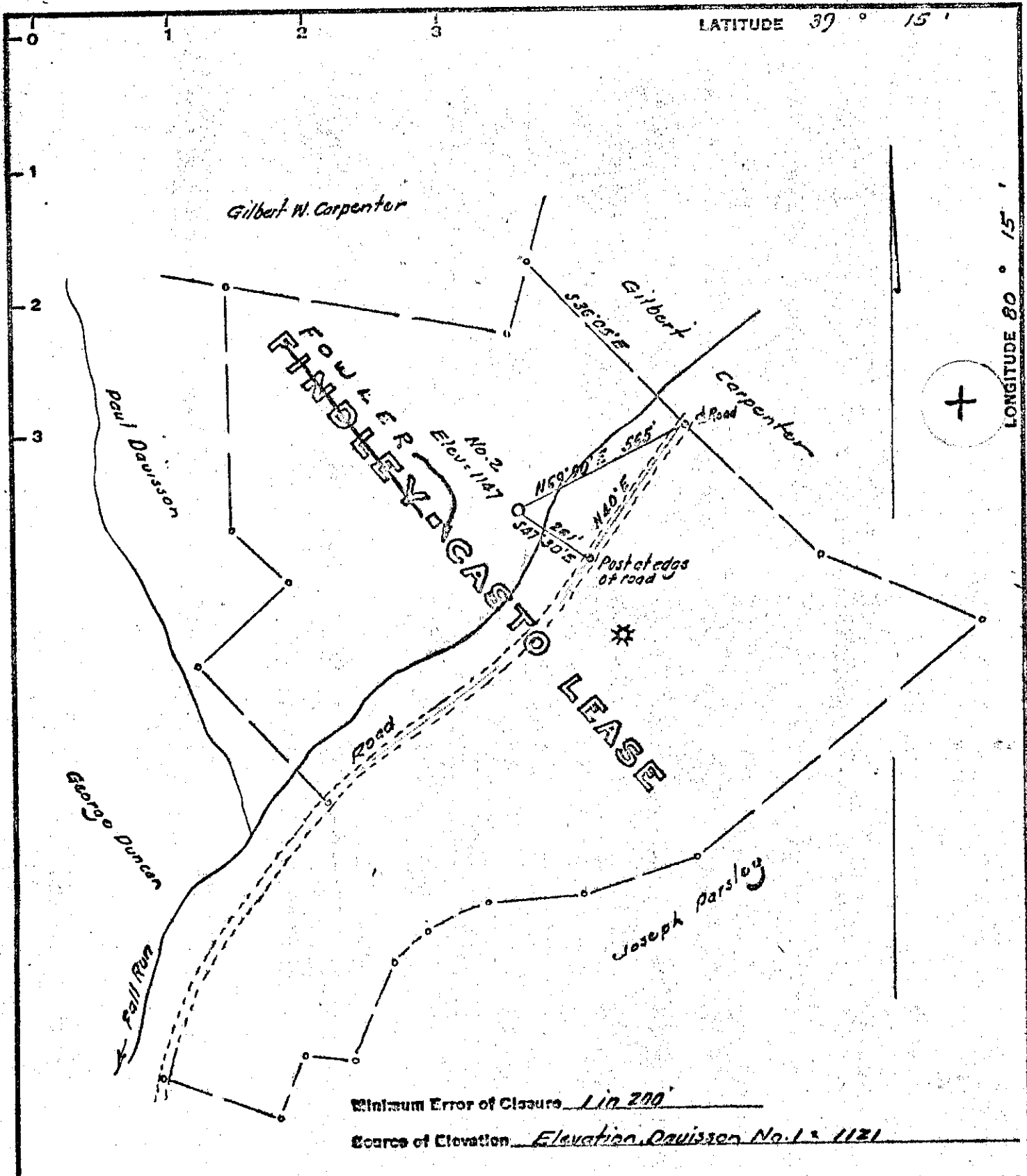
Signed: W. H. H. J.
 Squares: N S E W

Company Delta Producing Corp.
 Address 185 Washington St. Clarksburg, W. Va.
 Farm Fowler - Casto
 Tract _____ Acres 69.783 Lease No. _____
 Well (Farm) No. Two Serial No. _____
 Elevation (Spirit Level) 1147
 Quadrangle Weston
 County Harrison District Elk
 Engineer W. H. H. J.
 Engineer's Registration No. 1227
 File No. _____ Drawing No. _____
 Date Jan 17, 1969 Scale 1" = 400'

STATE OF WEST VIRGINIA
 DEPARTMENT OF MINES
 OIL AND GAS DIVISION
 CHARLESTON
WELL LOCATION MAP
 FILE NO. HAR-504-P

+ Denotes location of well on United States Topographic Maps, scale 1 to 62,500, latitude and longitude lines being represented by border lines as shown.

- Denotes one inch spaces on border line of original tracing.



Minimum Error of Closure 1 in 200
 Source of Elevation Elevation Davison No. 1 - 1121

I, the undersigned, hereby certify that this map is correct to the best of my knowledge and belief and shows all the information required by paragraph 6 of the rules and regulations of the oil and gas section of the mining laws of West Virginia.

- Fracture
- New Location
- Drill Deeper
- Abandonment

Signed: Weston J. [Signature]
 Squares: II III IV

Map No.

Company Delta Producing Corp.
 Address 195 Washington St. Clarksburg, W. Va.
 Farm Fowler-Costa
 Tract Acres 69.783 Lease No. _____
 Well (Farm) No. Two Serial No. _____
 Elevation (Spirit Level) 1147
 Quadrangle Waston **NE**
 County Harrison District Elk
 Engineer Weston J. [Signature]
 Engineer's Registration No. 1227
 File No. _____ Drawing No. _____
 Date Jan 17, 1969 Scale 1" = 400'

STATE OF WEST VIRGINIA
 DEPARTMENT OF MINES
 OIL AND GAS DIVISION
 CHARLESTON

WELL LOCATION MAP
 FILE NO. HAR-504

* Denotes location of well on United States Topographic Maps, scale 1 to 62,500, latitude and longitude lines being represented by border lines as shown.
 - Denotes one inch spaces on border line of original tracing.



STATE OF WEST VIRGINIA
DEPARTMENT OF MINES
OIL AND GAS DIVISION 5

Rotary
Spudder
Cable Tools
Storage

Quadrangle _____

WELL RECORD

Permit No. Har-504

Oil or Gas Well Dry
(KIND)

Company Delta Producing Corporation
 Address 185 Washington Ave. Clarksburg, W. Va.
 Farm Fowler-Casto Acres 69.783
 Location (waters) _____
 Well No. One Elev. 1147
 District Elk County Harrison
 The surface of tract is owned in fee by R. C. Fowler
 Address Nutter Fort, W. Va.
 Mineral rights are owned by _____
 Address _____
 Drilling commenced 2-18-69
 Drilling completed 4-25-69
 Date Shot _____ From _____ To _____
 With _____
 Open Flow /10ths Water in _____ Inch
/10ths Merc. in _____ Inch
 Volume _____ Cu. Ft.
 Rock Pressure _____ lbs. _____ hrs.
 Oil _____ bbls., 1st 24 hrs.
 WELL ACIDIZED (DETAILS) _____ FEET _____ INCHES
 _____ FEET _____ INCHES
 _____ FEET _____ INCHES
 WELL FRACTURED (DETAILS) _____
 RESULT AFTER TREATMENT (Initial open Flow or bbls.) _____
 ROCK PRESSURE AFTER TREATMENT _____ HOURS
 Fresh Water 60' Feet Salt Water 740' Feet
 Producing Sand _____ Depth 4634

| Formation | Color | Hard or Soft | Top | Bottom | Oil, Gas or Water | Depth | Remarks | |
|--------------------|------------------------|--------------|-----|--------|---|-------|--------------------------------------|--|
| Clay | Yellow | | 0 | 15 | Water | 60' | hole full | |
| Slate & Shells | Gray | | 15 | 115 | | | | |
| Gritty Lime | Gray | | 115 | 140 | | | | |
| Red Rock-Lime | | | 140 | 160 | | | | |
| Slate, Lime-Shells | | | 160 | 194 | | | | |
| Lime | | | 194 | 230 | | | | |
| Slate | | | 230 | 242 | | | | |
| and L. Shells | | | 242 | 264 | | | | |
| Slate | | | 264 | 306 | | | | |
| Gritty-Lime | | | 306 | 363 | | | | |
| Slate-Shells | | | 363 | 450 | Ran 394' 10 3/4" Casing on Steel Shoe 2-25-69 | | | |
| and Big Shells | | | 450 | 490 | | | | |
| Gritty-Lime | | | 490 | 532 | Set Stringer 2-28-69 | | | |
| Slate | Gray | | 532 | 546 | | | | |
| Coal | | | 546 | 547 | | | | |
| Lime | Gray | | 547 | 555 | | | | |
| and | | | 555 | 603 | | | | |
| Slate-Shells | | | 603 | 633 | | | | |
| and | | | 633 | 740 | | | | |
| Broken Sand | Gray - <u>Sub Sand</u> | | 740 | 745 | | | Show of W. 740' 1 Bailer ever 3 hrs. | |
| and | | | 745 | 785 | | | | |
| Slate-Shells | | | 785 | 800 | | | | |
| Gritty-Lime | | | 800 | 845 | | | | |
| Slate | | | 845 | 846 | | | | |
| Lime-Gritty | | | 846 | 915 | | | | |
| Slate-Shells | | | 915 | 955 | | | | |
| Lime | | | 955 | 974 | | | | |
| Lime-Gritty | | | 974 | 990 | | | | |
| and | | | 990 | 1010 | | | | |

| Formation | Color | Hard or Soft | Top 5 | Bottom | Oil, Gas or Water | Depth Found | Remarks |
|------------------|-----------------|--------------|-------|--------|---------------------------|-------------|---------|
| late-Shells | | | 1010 | 1058 | Show of W. | 998-1000 | |
| ed Rock | | | 1058 | 1120 | | | |
| and | | | 1120 | 1180 | Ran 1124' of 8 5/8 casing | | |
| ime | | | 1180 | 1210 | on Steel Shoe | 3/7/69 | |
| ed Rock-lime | 311 | | 1210 | 1240 | | | |
| ime-L. lime | | | 1240 | 1290 | | | |
| encil Cave | | Soft | 1290 | 1295 | | | |
| ig Lime | | Hard | 1295 | 1358 | | | |
| ener Sand | | Hard | 1358 | 1420 | Show of Gas | 1404-1405 | |
| ed Lime - | | | 1420 | 1423 | | | |
| hjun Sand | | Hard | 1423 | 1475 | | | |
| ed Rock-Lime | | | 1475 | 1485 | | | |
| late-Shells | | | 1485 | 1533 | | | |
| and-SQUAW | | Hard | 1533 | 1545 | | | |
| late-Shells | Gray | Soft | 1545 | 1550 | | | |
| andy Lime | | Hard | 1550 | 1575 | | | |
| late-Lime Shells | | Med. | 1575 | 1705 | | | |
| ime | | Hard | 1705 | 1725 | | | |
| and | | Hard | 1725 | 1735 | | | |
| ime | | Hard | 1735 | 1745 | | | |
| and | | Hard | 1745 | 1810 | | | |
| ime | | Hard | 1810 | 1815 | | | |
| and | | Hard | 1815 | 1915 | | | |
| ritty Lime | | Hard | 1915 | 1955 | | | |
| ime-Red Rock | | | 1955 | 1974 | | | |
| and | 50 | Hard | 1974 | 2035 | | | |
| ime-Red Rock | | | 2035 | 2075 | | | |
| and | 30 | Hard | 2075 | 2085 | | | |
| ime-Red Rock | | | 2085 | 2105 | | | |
| and | 6 | Hard | 2105 | 2120 | | | |
| ime-Red Rock | | | 2120 | 2150 | | | |
| and | | | 2150 | 2175 | | | |
| ime-Red Rock | | | 2175 | 2200 | | | |
| and | | | 2200 | 2215 | | | |
| late-Shells | | | 2215 | 2255 | | | |
| and | | | 2255 | 2300 | | | |
| late-Shells | | | 2300 | 2555 | | | |
| ritty Lime | | | 2555 | 2585 | | | |
| late-Shells | | | 2585 | 2660 | | | |
| ritty Lime | | | 2660 | 2695 | | | |
| late-Shells | | | 2695 | 2735 | | | |
| and | | | 2735 | 2800 | | | |
| ime | | | 2800 | 2860 | | | |
| late-Lime-Shells | | | 2860 | 2995 | | | |
| and | | | 2995 | 3005 | | | |
| late-Lime-Shells | | | 3005 | 3120 | | | |
| and | | | 3120 | 3361 | | | |
| late-Shells | | | 3361 | 3750 | | | |
| andy Lime | | | 3750 | 3780 | | | |
| late-Shells | | | 3780 | 3970 | | | |
| and | | | 3970 | 3985 | | | |
| late-Shells | | | 3985 | 4035 | | | |
| Sand-Riley | | | 4035 | 4055 | Show of Oil | 4046-1056 | |
| late | | | 4055 | 4330 | | | |
| late-Lime-Shells | Benson interval | | 4330 | | | | |
| | | | TD | 4634 | | | |

Date _____, 19__

APPROVED _____, Owner

By _____ (Title)