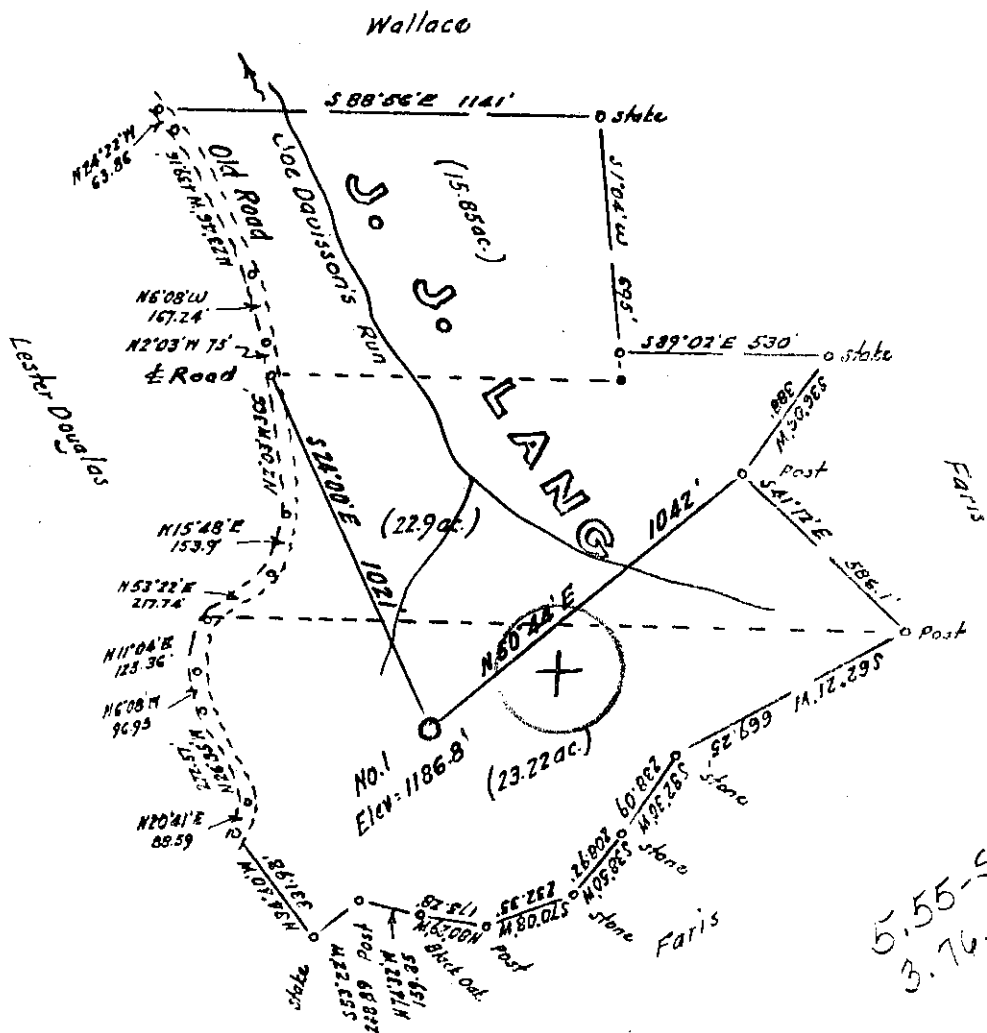


LATITUDE 39 ° 20 '

LONGITUDE 80 ° 10 '



Minimum Error of Closure 1 in 200'

Source of Elevation Elev. George Fairis No. 1 = 1124

I, the undersigned, hereby certify that this map is correct to the best of my knowledge and belief and shows all the information required by paragraph 6 of the rules and regulations of the oil and gas section of the mining laws of West Virginia.

- Fracture.....
- New Location.....
- Drill Deeper.....
- Abandonment.....

Signed: W. J. Harrison
 Squares: N S E W

Map No. _____

Company Delta Producing Corp.
 Address 185 Washington St. Clarksburg, W. Va.
 Farm W. J. Lang
 Tract _____ Acres 61.97 Lease No. _____
 Well (Farm) No. One Serial No. _____
 Elevation (Spirit Level) 1186.8
 Quadrangle Fairmont **(SW)**
 County Harrison District Simpson
 Engineer W. J. Harrison
 Engineer's Registration No. 1227
 File No. _____ Drawing No. _____
 Date April 1, 1969 Scale 1" = 500'

STATE OF WEST VIRGINIA
 DEPARTMENT OF MINES
 OIL AND GAS DIVISION
 CHARLESTON

WELL LOCATION MAP
 FILE NO. HAR-512

+ Denotes location of well on United States Topographic Maps, scale 1 to 62,500, latitude and longitude lines being represented by border lines as shown.

- Denotes one inch spaces on border line of original tracing.



STATE OF WEST VIRGINIA
DEPARTMENT OF MINES
OIL AND GAS WELLS DIVISION

- Rotary
- Spudder
- Cable Tools
- Storage

Oil or Gas Well Gas
(KIND)

WELL RECORD

Quadrangle

Permit No. Har- 512

Company Delta Producing Corporation
Address 185 Washington Ave. Clarksburg, W.Va.
Farm J. J. Lang Acres 61.97

Location (waters)

Well No. J. J. Lang #1 Elev. 1186.8'
District Simpson County Harrison

The surface of tract is owned in fee by

Address

Mineral rights are owned by J. J. Lang
Address Bridgeport, W.Va.

Drilling commenced 4/4/69
Drilling completed 4/11/69

Date Shot

From

To

With

Open Flow /10ths Water in Inch

/10ths Merc. in Inch

Volume Cu. Ft.

Rock Pressure lbs. hrs.

Oil bbls., 1st 24 hrs.

WELL ACIDIZED (DETAILS)

WELL FRACTURED (DETAILS) 4-18-69 Fifth Sand
Keener, Big Injun

RESULT AFTER TREATMENT (Initial open Flow or bbls.) 1,500,000 MCF

ROCK PRESSURE AFTER TREATMENT 750 HOURS 48

Fresh Water Feet

Producing Sand Fifth Sand, Keener- Big Injun Depth 2270-2273 Feet 1105-1171

Casing and Tubing	Used in Drilling	Left in Well	Packers
Size			Kind of Packer
16			
13	18'	18'	
10			Size of
8 3/4	656'	656'	
6 3/4			Depth set
5 3/16			
4 1/2	2463	2463	
3			Perf. top <u>1105</u> - 1130 Keener
2			Perf. bottom <u>1171</u> Big Injun
Liners Used			Perf. top <u>2270</u> } Fish
			Perf. bottom <u>2273</u> }

Attach copy of cementing record.

CASING CEMENTED 4 1/2 SIZE 2463 No. F4-11-69 Date

Amount of cement used (bags) 175

Name of Service Co. Dowell

COAL WAS ENCOUNTERED AT FEET INCHES

..... FEET INCHES FEET INCHES

..... FEET INCHES FEET INCHES

1089 bbls 42,000 # Sand

1538 bbls. 63,000 # Sand

Formation	Color	Hard or Soft	Top	Bottom	Oil, Gas or Water	Depth	Remarks
Shale * Sand			0	1278			
Lime (Little)			1278	1294			
Shale - P. Core			1294	1322			
Lime (Big)			1322	1384			
Sand (Keener)			1384	1430			
Sand (Injun)			1430	1500	Gas	1573'	4,678'
Shale			1500	1845			
Sand			1845	1855			
Shale			1855	1890			
Sand 50'			1890	1942			
Shale			1942	1970			
Sand 50'			1970	2015			
Shale			2015	2058			
Sand 30'			2058	2068			
Shale			2068	2103			
Sand Gordon 34'			2103	2292	Gas	2172	6,038'
Shale			2292	2340			
Sand (5th)			2340	2392	Gas	2390	8,956'
Shale			2392	2475	TD		