

CHAS. DAWSON
 Minimum Error of Closure $\frac{1}{2,000}$
 Source of Elevation JUNCTION OLD ROADS 1/4 MILE WEST
OF LOCATION E.L. = 1882

I, the undersigned, hereby certify that this map is correct to the best of my knowledge and belief and shows all the information required by paragraph 6 of the rules and regulations of the oil and gas section of the mining laws of West Virginia.

Signed: Paul G. Dean
 Squares: N S E W

- Fracture
- New Location
- Drill Deeper
- Abandonment

Map No. issued 5-6-71

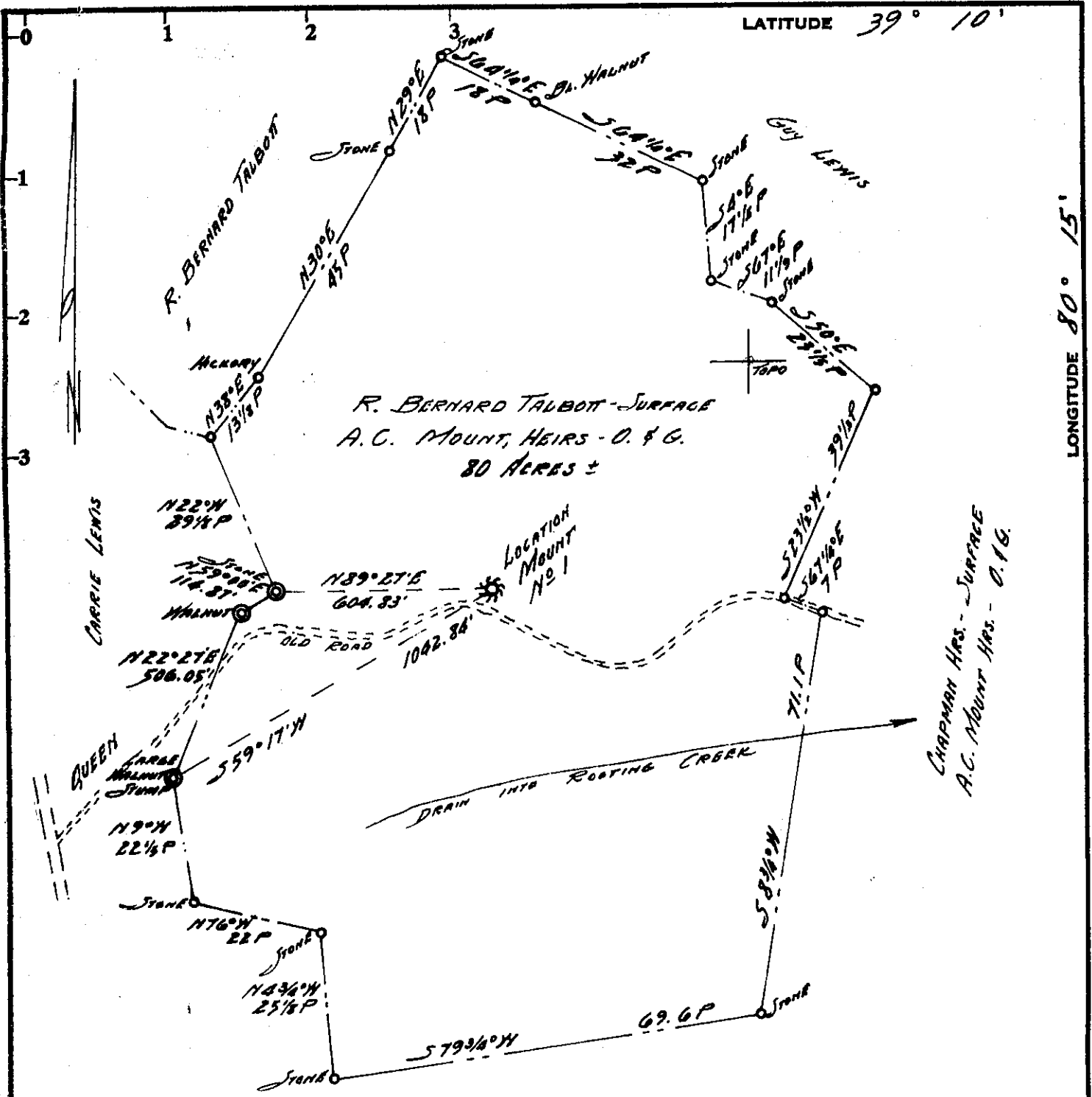
Company D. A. DORWARD
 Address 43209 41 N. CASTERFIELD RD, COLUMBUS, OHIO
 Farm A. C. MOUNT, HRS. et. al. O. & G.
 Tract 1 Acres 80 ± Lease No. _____
 Well (Farm) No. ONE Serial No. _____
 Elevation (Spirit Level) 1240
 Quadrangle WESTON EC
 County HARRISON District ELK
 Engineer PAUL G. DEAN
 Engineer's Registration No. 1856
 File No. 136-F-74 Drawing No. 70-88
 Date Nov. 7, 1970 Scale 1" = 400'

STATE OF WEST VIRGINIA
 DEPARTMENT OF MINES
 OIL AND GAS DIVISION
 CHARLESTON

WELL LOCATION MAP

FILE NO. MAR-555-P

+ Denotes location of well on United States Topographic Maps, scale 1 to 62,500, latitude and longitude lines being represented by border lines as shown.
 - Denotes one inch spaces on border line of original tracing.



Minimum Error of Closure 1/2,000

Source of Elevation JUNCTION OLD ROADS 1/4 MILE WEST OF LOCATION ELEV. 1242

I, the undersigned, hereby certify that this map is correct to the best of my knowledge and belief and shows all the information required by paragraph 6 of the rules and regulations of the oil and gas section of the mining laws of West Virginia.

Signed: Paul G. Dean

- Fracture.....
- New Location.....
- Drill Deeper.....
- Abandonment.....

Map No. _____

Squares: N S E W

Company D. A. DORWARD
 Address 41 N. CHESTERFIELD RD., COLUMBUS, OHIO 43209
 Farm A. C. MOUNT, HRS. et. al. O. & G.
 Tract 1 Acres 80 ± Lease No. _____
 Well (Farm) No. ONE Serial No. _____
 Elevation (Spirit Level) 1240
 Quadrangle WESTON (EC)
 County HARRISON District ELK
 Engineer PAUL G. DEAN
 Engineer's Registration No. 1836
 File No. 136 F-74 Drawing No. 70-88
 Date NOV. 7, 1970 Scale 1" = 400'

STATE OF WEST VIRGINIA
 DEPARTMENT OF MINES
 OIL AND GAS DIVISION
 CHARLESTON

WELL LOCATION MAP

FILE NO. HAR-555

+ Denotes location of well on United States Topographic Maps, scale 1 to 62,500, latitude and longitude lines being represented by border lines as shown.

— Denotes one inch spaces on border line of original tracing.



RECEIVED

MAY 6 1971

STATE OF WEST VIRGINIA OIL & GAS DIVISION
 DEPARTMENT OF MINES DEPT. OF MINES
 OIL AND GAS DIVISION

- Rotary
- Sudder
- Cable Tools
- Storage
- Oil or Gas Well

Dray
(KIM)

WELL RECORD

Quadrangle Weston
 Permit No. WV-555

Company D. A. Dornard
 Address 41 N. Chesterfield Rd. Columbus, Ohio
 Farm R. Bernard Talbott Acres 80
 Location (waters) Rooting Creek
 Well No. 1 Elev. 1240
 District Elk County Harrison
 The surface of tract is owned in fee by R. B. Talbott
Ht. Address Lost Creek
 Mineral rights are owned by Clott Mount etal
220 5th. Ave Address South Charleston
W. Va.
 Drilling commenced 1-18-71
 Drilling completed 4-30-71
 Date Shot From To
 With
 Open Flow /10ths Water in Inch
 /10ths Merc. in Inch
 Volume Cu. Ft.
 Rock Pressure lbs. hrs.
 Oil bbls., 1st 24 hrs.
 WELL ACIDIZED (DETAILS)

Casing and Tubing	Used in Drilling	Left in Well	Packers
Size			Kind of Packer
16	18.5	18.5	
13			Size of
10	277	277	
8 1/4			Depth set
6 1/4	1845	1845	
5 3/16	2073		
4 1/2			Perf. top
3			Perf. bottom
2			Perf. top
Liners Used			Perf. bottom

Attach copy of cementing record.
 CASING CEMENTED see SIZE above No. PL Date
 Amount of cement used (bags)
 Name of Service Co. Dovell
 COAL WAS ENCOUNTERED AT 481 FEET 48 INCHES
707 FEET 36 INCHES
 FEET INCHES FEET INCHES
 FEET INCHES FEET INCHES

WELL FRACTURED (DETAILS)
 RESULT AFTER TREATMENT (Initial open Flow or bbls.)
 ROCK PRESSURE AFTER TREATMENT 40 HOURS 487
 Fresh Water NONE Feet at 1831 Salt Water and 1921
 Producing Sand NONE Depth

Formation	Color	Hard or Soft	Top	Bottom	Oil, Gas or Water	Depth	Remarks
Clay			0	20			
Slate			20	100	Water 40'		
Lime			100	140			
Slate & Shells			140	179			
Red Rock			179	260			
Lime			260	330			
Slate & Shells			330	442			
Sand	L Dark		442	530	Water	487-496	
Slate & Shells			530	559			
Sand	B Dark		559	575			
Slate & Shells			575	681			
SMI Coal			681	685			
Lime			685	720			
Slate & Shells			720	744			
Lime			744	787			
Coal			787	790			
Slate & Shells			790	893			
Sand & Lime			893	1022			
Slate & Shells			1022	1072			
Sand & Lime			1072	1129			
Red Rock			1129	1281			
Sand	max		1281	1377			
Red Rock			1377	1415			
Lime	L LIME		1415	1438			
Slate			1438	1466			
Big Line -			1466	1525			
OVKR				OVER			

Formation	Color	Hard or Soft	Top ϵ	Bottom	Oil, Gas or Water	Depth Found	Remarks
Big Line			1466	1525			
Sand - Keener			1525	1644			
Line			1644	1665			
Slate & Shells			1665	1719			
Line			1719	1770			
Slate & Shells			1770	1808			
Gants Sand - Berea			1808	2088	Gas & Water 1831-39	1845' 7"	1845' 7"
Slate			2088	2098	Oil 1912		
Red Rock			2098	2314	Gas Oil Water 1921-24	2075' 5"	
Slate & Shells			2314	2367			
Sand (Firth) 5 th			2367	2395	Gas	2379-90	3/10W 1"
Slate & Shells			2395	2707			
Line			2707	3162			
Slate & Shells			3162	3204			
Line			3204	3470			
Slate			3470	3514			
			Total Depth	3514			

Dev. Shale (Chemung)
 UNRECOVERABLE DRILLING TOOLS FROM 3414 up to 3250

Date May 6 1917
 APPROVED D. A. Dornard Own
 By D. B. Cayton (Title) Sup.