

Minimum Error of Closure 1 in 200'

Source of Elevation B.M. on road 1 mile NE = 1070

I, the undersigned, hereby certify that this map is correct to the best of my knowledge and belief and shows all the information required by paragraph 6 of the rules and regulations of the oil and gas section of the mining laws of West Virginia.

Fracture   
 New Location   
 Drill Deeper   
 Abandonment  2-12-71

Signed: [Signature]  
 Squares: N S E W

Map No.

Company PETROLEUM DEVELOPMENT CORP.  
 Address P.O. Box 23, Brinsport, West Va. 26330  
 Farm Ben Morris  
 Tract \_\_\_\_\_ Acres 46.2 Lease No. \_\_\_\_\_  
 Well (Farm) No. One Serial No. 2001  
 Elevation (Spirit Level) 1188  
 Quadrangle Fairmont (SW)  
 County Harrison District Simpson  
 Engineer [Signature]  
 Engineer's Registration No. 1227  
 File No. \_\_\_\_\_ Drawing No. \_\_\_\_\_  
 Date November 25, 1970 Scale 1" = 400'

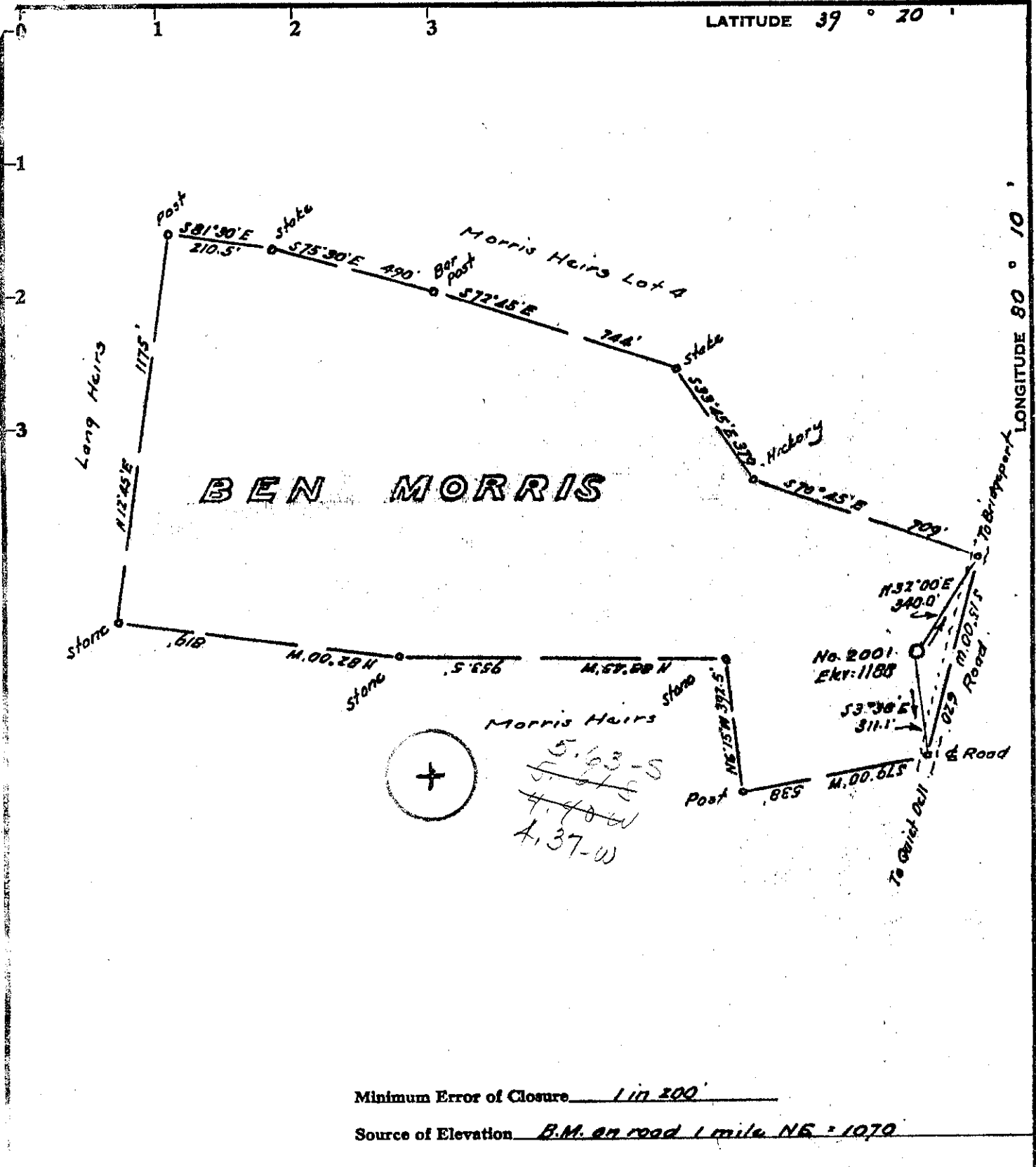
STATE OF WEST VIRGINIA  
 DEPARTMENT OF MINES  
 OIL AND GAS DIVISION  
 CHARLESTON

WELL LOCATION MAP

FILE NO. HAR 556-P

+ Denotes location of well on United States Topographic Maps, scale 1 to 62,500, latitude and longitude lines being represented by border lines as shown.

- Denotes one inch spaces on border line of original tracing.



Minimum Error of Closure 1 in 200

Source of Elevation B.M. on road 1 mile NE - 1070

I, the undersigned, hereby certify that this map is correct to the best of my knowledge and belief and shows all the information required by paragraph 6 of the rules and regulations of the oil and gas section of the mining laws of West Virginia.

Signed: [Signature]  
Squares: N S E W

- Fracture.....
- New Location...
- Drill Deeper.....
- Abandonment.....

Map No. \_\_\_\_\_

Company PETROLEUM DEVELOPMENT CORP.  
 Address P.O. Box 26 Bridgeport, West Va.  
 Farm Bsa Morris  
 Tract \_\_\_\_\_ Acres 46.2 Lease No. \_\_\_\_\_  
 Well (Farm) No. 002 Serial No. 2001  
 Elevation (Spirit Level) 1188  
 Quadrangle Fairmont (SW)  
 County Harrison District Simpson  
 Engineer [Signature]  
 Engineer's Registration No. 1227  
 File No. \_\_\_\_\_ Drawing No. \_\_\_\_\_  
 Date November 25, 1970 Scale 1" = 400'

STATE OF WEST VIRGINIA  
 DEPARTMENT OF MINES  
 OIL AND GAS DIVISION  
 CHARLESTON

**WELL LOCATION MAP**

FILE NO. HAR - 556

+ Denotes location of well on United States Topographic Maps, scale 1 to 62,500, latitude and longitude lines being represented by border lines as shown.  
 - Denotes one inch spaces on border line of original tracing.

STATE OF WEST VIRGINIA  
DEPARTMENT OF MINES  
OIL AND GAS WELLS DIVISION

Rotary   
Spudder   
Cable Tools   
Storage

Quadrangle Fairmont  
Permit No. Har-556

WELL RECORD

Oil or Gas Well Dry  
(KIND)

Company Petroleum Development Corp.  
Address P.O. Box 26, Bridgeport, W. Va.  
Farm Ben Morris Acres 46.2  
Location (waters) Brushyfork  
Well No. 1 2001 Elev. 1188  
District Simpson County Harrison  
The surface of tract is owned in fee by Morris Heirs  
Address Rt. 2, Bridgeport  
Mineral rights are owned by Morris Heirs  
Address Bridgeport, W. Va.

Casing and Tubing	Used in Drilling	Left in Well	Packers
Size			
16	9'	9'	Kind of Packer
13			
10	206'	206'	Size of
8 1/4			
6 3/4	944	944	Depth set
5 3/16			
4 1/2			
3			Perf. top
2			Perf. bottom
Liners Used			Perf. top
			Perf. bottom

Drilling commenced Dec. 10, 1970  
Drilling completed Feb. 10, 1971  
Date Shot From To  
With

Open Flow /10ths Water in Inch  
/10ths Merc. in Inch  
Volume Cu. Ft.  
Rock Pressure lbs. hrs.  
Oil bbls., 1st 24 hrs.

Attach copy of cementing record.  
CASING CEMENTED 10 3/4 IN. No. Ft. 12/19/70 Date  
Amount of cement used (bags) 65 sk.  
Name of Service Co. Dowell  
COAL WAS ENCOUNTERED AT 105 FEET 5' INCHES  
FEET INCHES FEET INCHES  
FEET INCHES FEET INCHES

WELL ACIDIZED (DETAILS)  
WELL FRACTURED (DETAILS)

RESULT AFTER TREATMENT (Initial open Flow or bbls.)  
ROCK PRESSURE AFTER TREATMENT HOURS  
Fresh Water 45' & 75' Feet Salt Water 730' Feet  
Producing Sand Dry Depth

Formation	Color	Hard or Soft	Top	Bottom	Oil, Gas or Water	Depth	Remarks
Clay	red		Surf.	7'			
Sand	white		7	33			
Shale	blue		33	43			
lime			43	55	water 45'		show
shale			55	65			
lime			65	75			
Sand			75	95	water	75'	4 b/hr.
shale			95	105			
✓ coal			105	110			
lime, shaley			110	205			
shale			205	365			
Sand			365	372			
shale			372	372			
sand			375	420			
shale, limey			420	575			
sand			575	600			
Shale			600	645			
sand			645	661			
lime			661	700			
sand			700	710			
shale			710	865			
sand			865	910			
Shale, limey			910	975			
sand			975	988			
shale			988	1005			
shale	red		1005	1010			
shale			1010	1023			
sand			1023	1050			
shale	red		1050	1055			

(over)

Formation	Color	Hard or Soft	Top	Bottom	Oil, Gas or Water	Depth Found	Remarks
Sand			1055	1160			
lime, shaley			1160	1220			
lime			1220	1250			Little lime
shale - <i>P. Q. W. E. J.</i>			1260	1264			
lime			1264	1339			Big Lime
sand			1339	1370			Keener
shale			1370	1373			
sand	shaley		1373	1391			Big Injun
sand			1391	1441			
shale			1441	1531			
sand			1531	1545			
shale			1545	1698			
sand shaley			1698	1703			
shale			1703	1770			
lime			1770	1780			
shale			1780	1798			
sand			1798	1849			
shale			1849	1855			
sand			1855	1865			
shale, sandy			1865	1950			
sand			1950	1972			
shale			1972	2050			
sand			2050	2060			
shale, sandy			2060	2162			
sand			2162	2198			
shale			2198	2214			
sand			2214	2238			4 th sand
shale			2238	2292			
sand <i>Fifth</i>			2292	2338			5th sand
shale			2338	2359			

Date 2/10/71, 19\_\_

APPROVED Petroleum Development Corp., Owner

By J. E. ... Prod. Sup.  
(Title)