

Minimum Error of Closure 1 in 200

Source of Elevation Elev. (shown) at forks of road - 1065'

- Fracture
- New Location
- Drill Deeper
- Abandonment

I, the undersigned, hereby certify that this map is correct to the best of my knowledge and belief and shows all the information required by paragraph 6 of the rules and regulations of the oil and gas section of the mining laws of West Virginia.

Signed: W. Swisher

Map No. \_\_\_\_\_

Squares: N S E W

Company W. W. Wolfe & Stone Street Land Co.

Address 1111 1/2 St. W. Parkersburg, W. Va.

Farm Claude W. Swisher

Tract Acres 90.61 Lease No. \_\_\_\_\_

Well (Farm) No. 000 Serial No. \_\_\_\_\_

Elevation (Spirit Level) 1079

Quadrangle Western 6.23 EC

County Harrison District E16

Engineer W. Swisher

Engineer's Registration No. 1771

File No. \_\_\_\_\_ Drawing No. \_\_\_\_\_

Date Dec. 21, 1970 Scale 1" = 500'

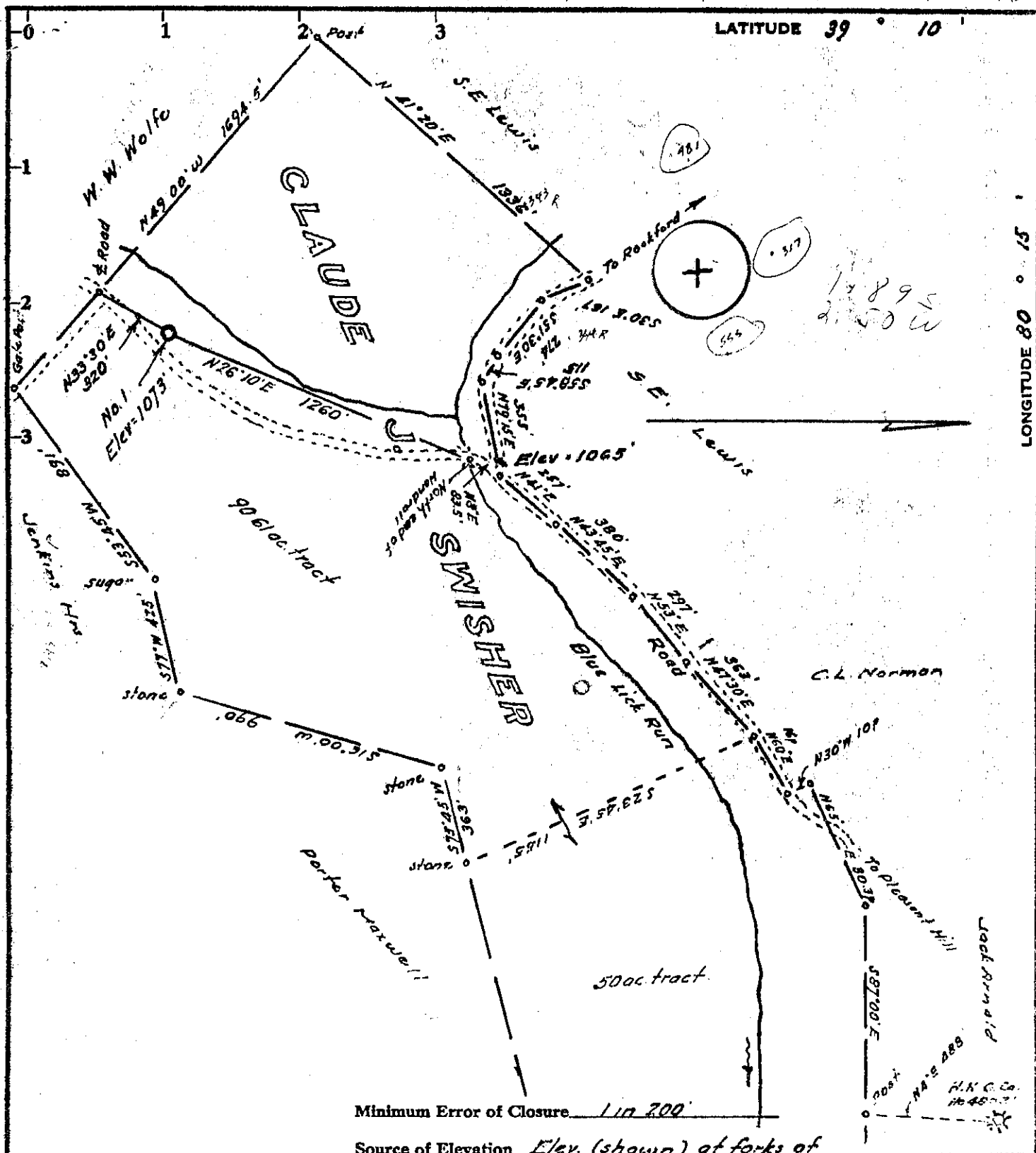
STATE OF WEST VIRGINIA  
DEPARTMENT OF MINES  
OIL AND GAS DIVISION  
CHARLESTON

WELL LOCATION MAP

FILE NO. 553

+ Denotes location of well on United States Topographic Maps, scale 1 to 62,500, latitude and longitude lines being represented by border lines as shown.

- Denotes one inch spaces on border line of original tracing.



Minimum Error of Closure 1 in 200'

Source of Elevation Elev. (shown) at forks of road: 1065'

I, the undersigned, hereby certify that this map is correct to the best of my knowledge and belief and shows all the information required by paragraph 6 of the rules and regulations of the oil and gas section of the mining laws of West Virginia.

Signed: Wesley J. Huddleston

Squares: N S E W

Map No.

- Fracture
- New Location
- Drill Deeper
- Abandonment

Partial plugging 1-1-71

Company Bill Huddleston

Address Fox Hills Drive, Parkersburg, W. Va.

Farm Claude & Swisher

Tract Acres 90.61 Lease No. \_\_\_\_\_

Well (Farm) No. One Serial No. \_\_\_\_\_

Elevation (Spirit Level) 1073

Quadrangle Weston **(C.E.)**

County Harrison District Elk

Engineer Wesley J. Huddleston

Engineer's Registration No. 1237

File No. \_\_\_\_\_ Drawing No. \_\_\_\_\_

Date Nov 21, 1970 Scale 1" = 500'

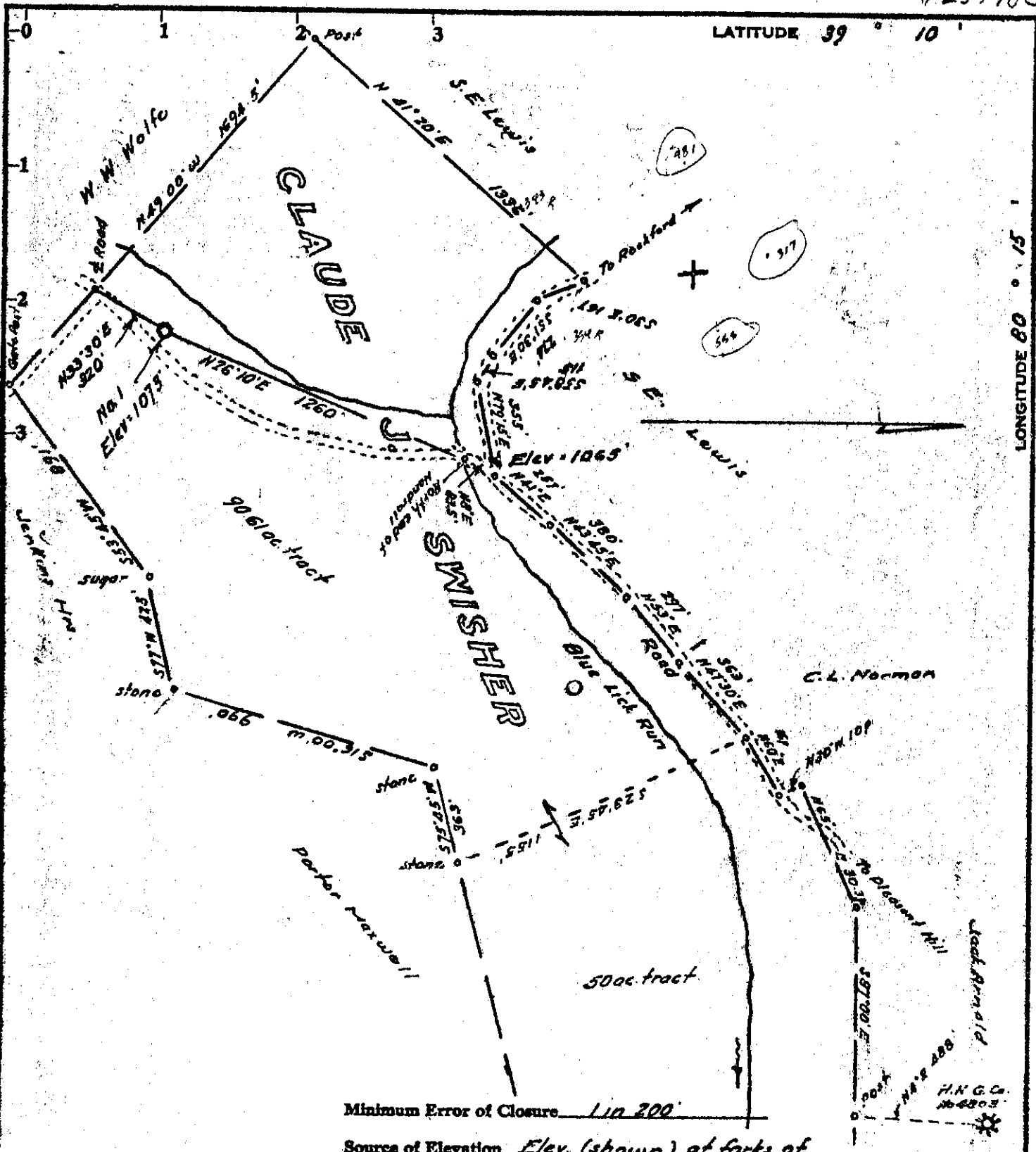
STATE OF WEST VIRGINIA  
DEPARTMENT OF MINES  
OIL AND GAS DIVISION  
CHARLESTON

WELL LOCATION MAP

HARR  
FILE NO. 558-PP

+ Denotes location of well on United States Topographic Maps, scale 1 to 62,500, latitude and longitude lines being represented by border lines as shown.

- Denotes one inch spaces on border line of original tracing.



Minimum Error of Closure 1 in 200'

Source of Elevation Elev. (shown) at forks of road: 1065'

- Fracture
- New Location
- Drill Deeper
- Abandonment

I, the undersigned, hereby certify that this map is correct to the best of my knowledge and belief and shows all the information required by paragraph 6 of the rules and regulations of the oil and gas section of the mining laws of West Virginia.

Signed: Wesley J. Huddleston  
Squares: N S E W

Company Bill Huddleston  
 Address Fox Hills Drive, Parkersburg, W. Va.  
 Farm Claude & Swisher  
 Tract Acres 90.61 Lease No. \_\_\_\_\_  
 Well (Farm) No. One Serial No. \_\_\_\_\_  
 Elevation (Spirit Level) 1073  
 Quadrangle Weston SE EC  
 County Harrison District Et  
 Engineer Wesley J. Huddleston  
 Engineer's Registration No. 1277  
 File No. \_\_\_\_\_ Drawing No. \_\_\_\_\_  
 Date Nov. 21, 1970 Scale 1" = 500'

STATE OF WEST VIRGINIA  
 DEPARTMENT OF MINES  
 OIL AND GAS DIVISION  
 CHARLESTON

WELL LOCATION MAP  
HARR  
 FILE NO. NA-558

+ Denotes location of well on United States Topographic Maps, scale 1 to 62,500, latitude and longitude lines being represented by border lines as shown.

- Denotes one inch spaces on border line of original tracing.



MAR 5 1971

STATE OF WEST VIRGINIA  
DEPARTMENT OF MINES  
OIL AND GAS WELLS DIVISION 4

Rotary   
Spudder   
Cable Tools   
Storage  E. HOLL

Quadrangle Weston

Permit No. HAR - 558

**WELL RECORD**

Oil or Gas Well Gas  
(KIND)

Company B. G. Huddleston  
Address Lakeview Hst., Parkersburg, W. Va.  
Farm Lewis Swisher Acres 90.61  
Location (waters) Blue Lick Run  
Well No. Swisher #1 Elev. 1073  
District Elk County Harrison  
The surface of tract is owned in fee by L.C. & C. J. Swisher  
Address Lost Creek, W. Va.  
Mineral rights are owned by L.C. & C. J. Swisher  
Address Lost Creek, W. Va.  
Drilling commenced December 19, 1970  
Drilling completed January 4, 1971  
Date Shot From To  
With  
Open Flow /10ths Water in Inch  
/10ths Merc. in Inch  
Volume 246,000 Cu. Ft.  
Rock Pressure lbs. hrs.  
Oil bbls., 1st 24 hrs.  
WELL ACIDIZED (DETAILS)  
WELL FRACTURED (DETAILS) Halliburton fractured Fifth Sand 2-4-71 with 670 bbls. of treated water, 28,000# 20-40 sand and 400 gal. of acid.  
RESULT AFTER TREATMENT (Initial open Flow or bbls.) 944,000 cubic feet  
ROCK PRESSURE AFTER TREATMENT 720 HOURS 24  
Fresh Water 365 & 665 Feet Salt Water 2170 Feet  
Producing Sand Fifth Depth (2209 - 2211)

| Casing and Tubing    | Used in Drilling | Left in Well | Packers        |
|----------------------|------------------|--------------|----------------|
| Size                 |                  |              | Kind of Packer |
| 16                   |                  |              |                |
| 13                   |                  |              | Size of        |
| <del>XDC</del> 1 1/4 | 181'             | 181'         |                |
| 8 5/8                | 1771'            | 1771'        | Depth set      |
| 6 3/4                |                  |              |                |
| 5 3/16               |                  |              |                |
| 4 1/2                | 2265'            | 2265'        | Perf. top      |
| 3                    |                  |              | Perf. bottom   |
| 2                    |                  |              | Perf. top      |
| Liners Used          |                  |              | Perf. bottom   |

Attach copy of cementing record.  
CASING CEMENTED 4 1/2" SIZE 2275 No. Ft. 1-4-71 Date  
Amount of cement used (bags) 80 sacks  
Name of Service Co. Halliburton  
COAL WAS ENCOUNTERED AT FEET INCHES  
FEET INCHES FEET INCHES  
FEET INCHES FEET INCHES

| Formation             | Color | Hard or Soft | Top  | Bottom | Oil, Gas or Water | Depth | Remarks |
|-----------------------|-------|--------------|------|--------|-------------------|-------|---------|
| Surface               |       |              | 0    | 40     |                   |       |         |
| Coal                  |       |              | 40   | 42     |                   |       |         |
| Shale                 |       |              | 42   | 105    |                   |       |         |
| Shale                 |       |              | 105  | 150    |                   |       |         |
| Shale                 |       |              | 150  | 330    |                   |       |         |
| Sand                  |       |              | 330  | 370    |                   |       |         |
| Coal                  |       |              | 370  | 375    |                   |       |         |
| Shale & Sand          |       |              | 375  | 450    | Water             | 365   |         |
| Coal                  |       |              | 450  | 453    |                   |       |         |
| Sdy. Shale            |       |              | 453  | 640    |                   |       |         |
| Sand                  | White | Hard         | 640  | 725    | Water             | 665   |         |
| Sdy. Shale            |       |              | 725  | 810    |                   |       |         |
| Sand                  |       |              | 810  | 900    |                   |       |         |
| Shale                 |       |              | 900  | 910    |                   |       |         |
| Sand                  |       |              | 910  | 945    |                   |       |         |
| Shale & Red Rock      |       |              | 945  | 1005   |                   |       |         |
| Shale & Sand          |       |              | 1005 | 1065   |                   |       |         |
| Sand                  |       |              | 1065 | 1155   |                   |       |         |
| Sdy. Shale & Red Rock |       |              | 1155 | 1215   |                   |       |         |
| Shale & Lime          |       |              | 1215 | 1260   |                   |       |         |
| Big Lime              |       |              | 1260 | 1410   |                   |       |         |
| Sandy Lime & Shale    |       |              | 1410 | 1440   |                   |       |         |
| Sdy. Shale            |       |              | 1440 | 1490   |                   |       |         |
| Sand & Shale          |       |              | 1490 | 1640   |                   |       |         |
| Sand & Shale Stks.    |       |              | 1640 | 1685   |                   |       |         |
| Sand, White Gantz     |       |              | 1685 | 1720   |                   |       |         |
| Shale & Sand          |       |              | 1720 | 1805   |                   |       |         |
| Sand                  |       |              | 1805 | 1870   |                   |       |         |
| Red Rock & Shale      |       |              | 1870 | 1950   |                   |       |         |

| Formation        | Color                     | Hard or Soft   | Top  | Bottom | Oil, Gas or Water | Depth Found | Remarks |  |
|------------------|---------------------------|----------------|------|--------|-------------------|-------------|---------|--|
| Sand             | Brown<br>Red Rock & Shale |                | 1950 | 1990   | Gas               |             |         |  |
| Red Rock & Shale |                           |                | 1990 | 2155   |                   |             |         |  |
| Sand             |                           |                | 2155 | 2185   |                   |             |         |  |
| Shale            |                           |                | 2185 | 2720   |                   |             |         |  |
| Sand             |                           |                | 2720 | 2760   |                   |             |         |  |
| Sdy. Shale       |                           |                | 2760 | 3110   |                   |             |         |  |
| Dark Sand        |                           |                | 3110 | 3140   |                   |             |         |  |
| Sandy Shale      |                           |                | 3140 | 3160   |                   |             |         |  |
| Sand             |                           |                | 3160 | 3200   |                   |             |         |  |
| Shale            |                           |                | 3200 | 3210   |                   |             |         |  |
| Sand             |                           |                | 3210 | 3320   |                   |             |         |  |
| Shale & Sand     |                           |                | 3320 | 4040   |                   |             |         |  |
| Shale            |                           |                | 4040 | 4080   |                   |             |         |  |
| Sand             |                           | Dark Benson #1 |      | 4080   |                   | 4095        |         |  |
| Shale            |                           |                |      | 4095   |                   | 4120        |         |  |
| Sand             | Dark Benson #2            |                | 4120 | 4125   |                   |             |         |  |
| Shale            |                           |                | 4125 | 4130   |                   |             |         |  |
| Sand             | Dark Benson #3            |                | 4130 | 4145   | Gas Show          |             |         |  |
| Sand & Shale     |                           | Hard           | 4145 | 4165   |                   |             |         |  |
| Sand             |                           |                | 4165 | 4175   |                   |             |         |  |
| Shale & Sand     |                           |                | 4175 | 4259   | T.D.              |             |         |  |

*P. J. Card prep* 2209-12 Bayard  
*show gas* 2152-62  
*show gas* 2206-10

Date March 1, 1971

APPROVED *R. K. ...* Owner

By \_\_\_\_\_ (Title)