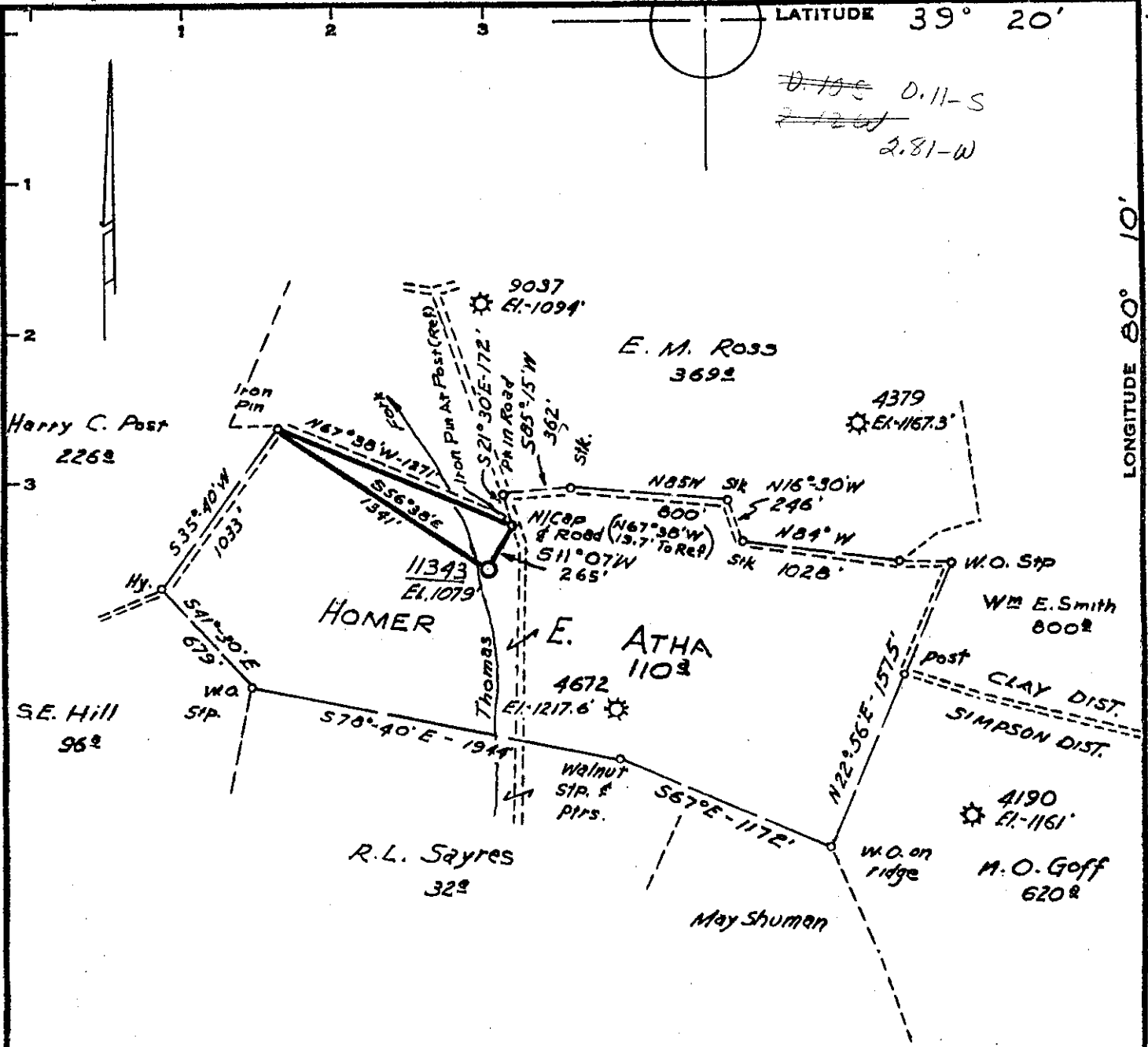


~~0.11-S~~  
~~2.81-W~~  
2.81-W



Minimum Error of Closure 1' in 200'  
 Source of Elevation CONSOLIDATED GAS SUPPLY CORP WELL  
4672 ELEVATION - 1217.6'  
 "I, the undersigned, hereby certify that this map is correct to the best of my knowledge and belief and shows all the information required by paragraph 6 of the rules and regulations of the oil and gas section of the mining laws of West Virginia."

- New Location
- Drill Deeper
- Abandonment

MAP SHEET 42 S-9, E-22

F.B. 1577 Pgs. 32-33

Company CONSOLIDATED GAS SUPPLY CORP.  
 Address CLARKSBURG W. VA.  
 Farm HOMER E. ATHA  
 Tract \_\_\_\_\_ Acres 110 Lease No. 24455  
 Well (Farm) No. \_\_\_\_\_ Serial No. 11343  
 Elevation (Spirit Level) 1079'  
 Quadrangle FAIRMONT (SW)  
 County HARRISON District SIMPSON  
 Engineer Jackson M. Jarman  
 Engineer's Registration No. 2397  
 File No. \_\_\_\_\_ Drawing No. \_\_\_\_\_  
 Date 3-24-71 Scale 1" = 800'

STATE OF WEST VIRGINIA  
 DEPARTMENT OF MINES  
 OIL AND GAS DIVISION  
 CHARLESTON

**WELL LOCATION MAP**  
 FILE NO. HAR-564

+ Denotes location of well on United States Topographic Maps, scale 1 to 62,500, latitude and longitude lines being represented by border lines as shown.  
 — Denotes one inch spaces on border line of original tracing.



6 23 1971

STATE OF WEST VIRGINIA  
DEPARTMENT OF MINES  
OIL AND GAS WELLS DIVISION

Rotary  xxxxx  
Spudder   
Cable Tools   
Storage  xxxxx *Storage*  
Oil or Gas Well  Gas (KIND)

Quadrangle FAIRMONT  
Permit No. HAR-564

WELL RECORD

Company	Consolidated Gas Supply Corp	Casing and Tubing	Used in Drilling	Left in Well	Packers
Address	Clarksburg, West Virginia	Size			
Farm	Homer E. Atha Acres 110	16			Kind of Packer
Location (waters)		13	185	185	
Well No.	11343 Elev.	10	768	768	Size of
District	Simpson County Harrison	8 1/4			Depth set
The surface of tract is owned in fee by		6 5/8	1757	1757	
Mineral rights are owned by		5 3/16			Perf. top
Drilling commenced	6-23-71	4 1/2			Perf. bottom
Drilling completed	7-08-71	3			Perf. top
Date Shot	Not Shot From To	2			Perf. bottom
With		Liners Used			

Attach copy of cementing record. 10" & 13" to surface

CASING CEMENTED SIZE No. Ft. Date

Amount of cement used (bags) 7" with 400 bags

Name of Service Co.

COAL WAS ENCOUNTERED AT None FEET INCHES

FEET INCHES FEET INCHES

FEET INCHES FEET INCHES

WELL ACIDIZED (DETAILS) No

WELL FRACTURED (DETAILS) Not Treated

RESULT AFTER TREATMENT (Initial open Flow or bbls.) 1,471, ~~000~~ <sup>M</sup> cubic feet

ROCK PRESSURE AFTER TREATMENT 240//

Fresh Water 30'; 500' Feet Salt Water

Producing Sand 50' Sand Storage Depth 1777 - 1781'

Formation	Color	Hard or Soft	Top	Bottom	Oil, Gas or Water	Depth	Remarks
Sand & shale			0	645	water	30' & 500'	
1st salt			645	740			
Sand & shale			740	770			
2nd Salt			770	800			
Sand & shale			800	1215			
Big Lime			1215	1300			
Big Injun			1300	1385			
Sand & shale			1385	1756			
50' sand			1756	1825	gas	1777-81	Storage
Total Depth				1825			