

Minimum Error of Closure 1" IN 200'
 Source of Elevation CONSOLIDATED GAS SUPPLY CORP.
WELL # 6443 ELEVATION-1193'
 "I, the undersigned, hereby certify that this map is correct to the best of my knowledge and belief and shows all the information required by paragraph 6 of the rules and regulations of the oil and gas section of the mining laws of West Virginia."

- New Location
- Drill Deeper
- Abandonment

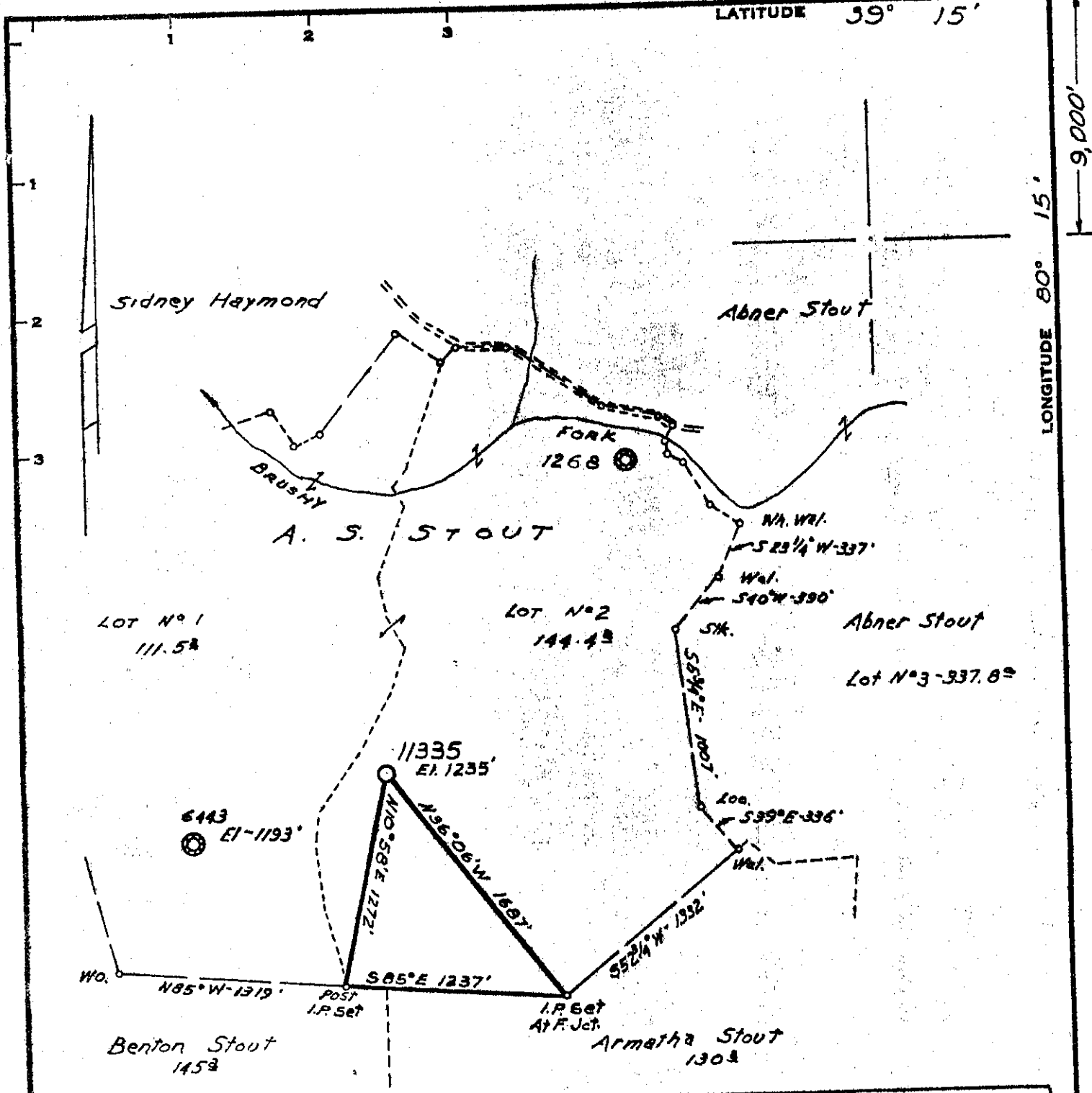
MAP SHEET 43 S-17-E-18 F.B. 1578 Pgs. 19-21

Company CONSOLIDATED GAS SUPPLY CORP.
 Address CLARKSBURG, W. VA.
 Farm A. S. STOUT
 Tract 144.4 of 662.22 Acres Lease No. 5018
 Well (Farm) No. _____ Serial No. 11335
 Elevation (Spirit Level) 1235'
 Quadrangle WESTON N.E.
 County HARRISON District SIMPSON
 Engineer Jackson M. Jarvis
 Engineer's Registration No. 2397
 File No. _____ Drawing No. _____
 Date 4-28-71 Scale 1" = 800'

STATE OF WEST VIRGINIA
 DEPARTMENT OF MINES
 OIL AND GAS DIVISION
 CHARLESTON

WELL LOCATION MAP
 FILE NO. Har-570
Cancelled - 11-30-72

+ Denotes location of well on United States Topographic Maps, scale 1 to 62,500, latitude and longitude lines being represented by border lines as shown.
 — Denotes one inch spaces on border line of original tracing.



Minimum Error of Closure 1' IN 200'
 Source of Elevation CONSOLIDATED GAS SUPPLY CORP.
WELL # 6443 ELEVATION - 1193'
 "I, the undersigned, hereby certify that this map is correct to the best of my knowledge and belief and shows all the information required by paragraph 6 of the rules and regulations of the oil and gas section of the mining laws of West Virginia."

- New Location
- Drill Deeper
- Abandonment

MAP SHEET 43 S-17, E-18 F.B. 1578 Pgs. 19-21

Company CONSOLIDATED GAS SUPPLY CORP.
 Address CLARKSBURG, W. VA.
 Farm A. S. STOUT
 Tract 144.43 OF 662.22 Acres 5018 Lease No. 5018
 Well (Farm) No. _____ Serial No. 11335
 Elevation (Spirit Level) 1235'
 Quadrangle WESTON (N.E.)
 County HARRISON District SIMPSON
 Engineer Joseph M. Jarvis
 Engineer's Registration No. 2397
 File No. _____ Drawing No. _____
 Date 4-28-71 Scale 1" = 800'

STATE OF WEST VIRGINIA
 DEPARTMENT OF MINES
 OIL AND GAS DIVISION
 CHARLESTON

WELL LOCATION MAP
 FILE NO. Har-570

+ Denotes location of well on United States Topographic Maps, scale 1 to 62,500, latitude and longitude lines being represented by border lines as shown.
 — Denotes one inch spaces on border line of original tracing.