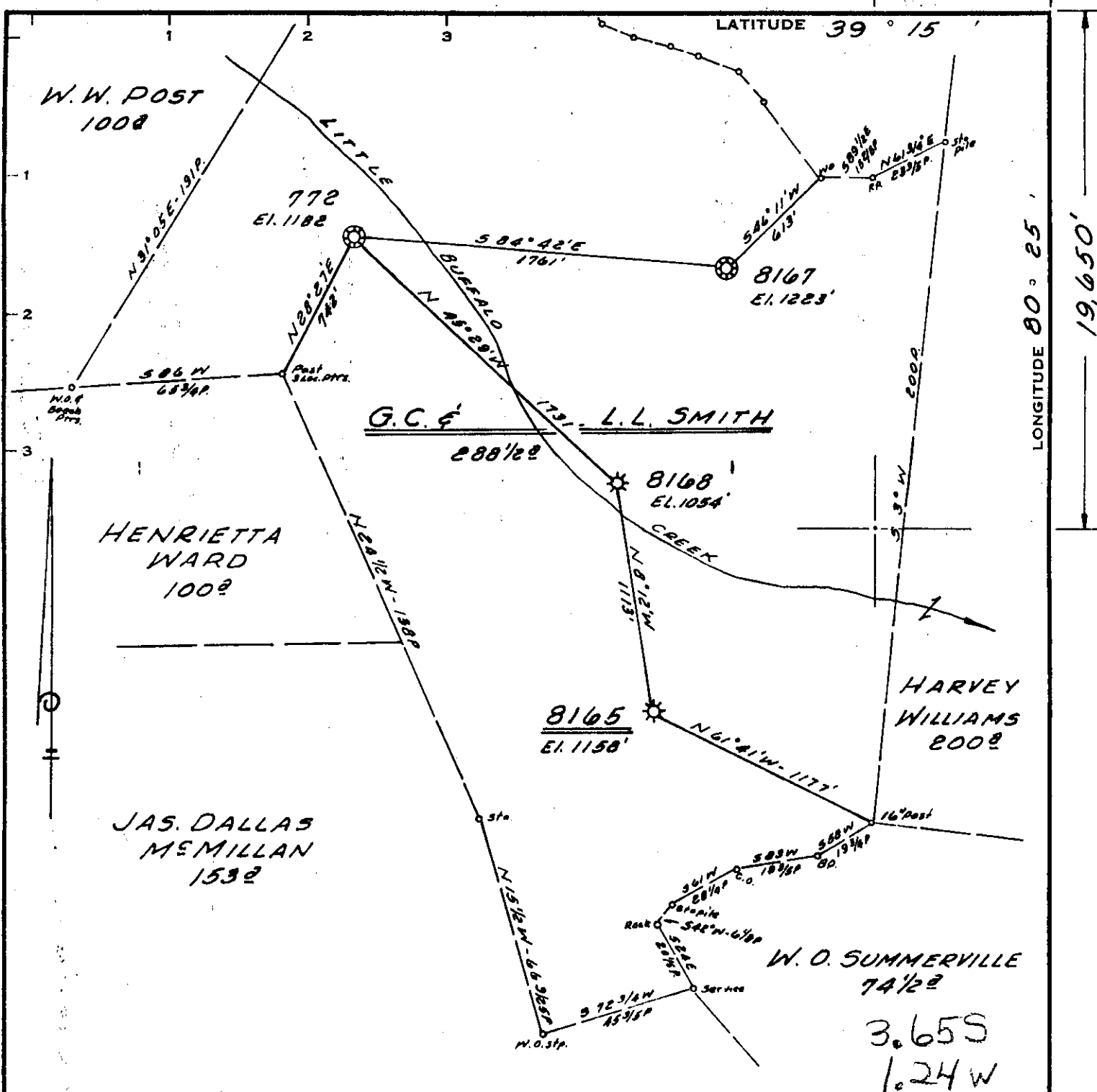


6,600'



LONGITUDE 80° 25'

Minimum Error of Closure 1' IN 200'
 Source of Elevation CONSOLIDATED GAS SUPPLY CORP.
WELL No 8168 ELEVATION 1054'
 "I, the undersigned, hereby certify that this map is correct to the best of my knowledge and belief and shows all the information required by paragraph 6 of the rules and regulations of the oil and gas section of the mining laws of West Virginia."

- New Location
- Drill Deeper
- Abandonment

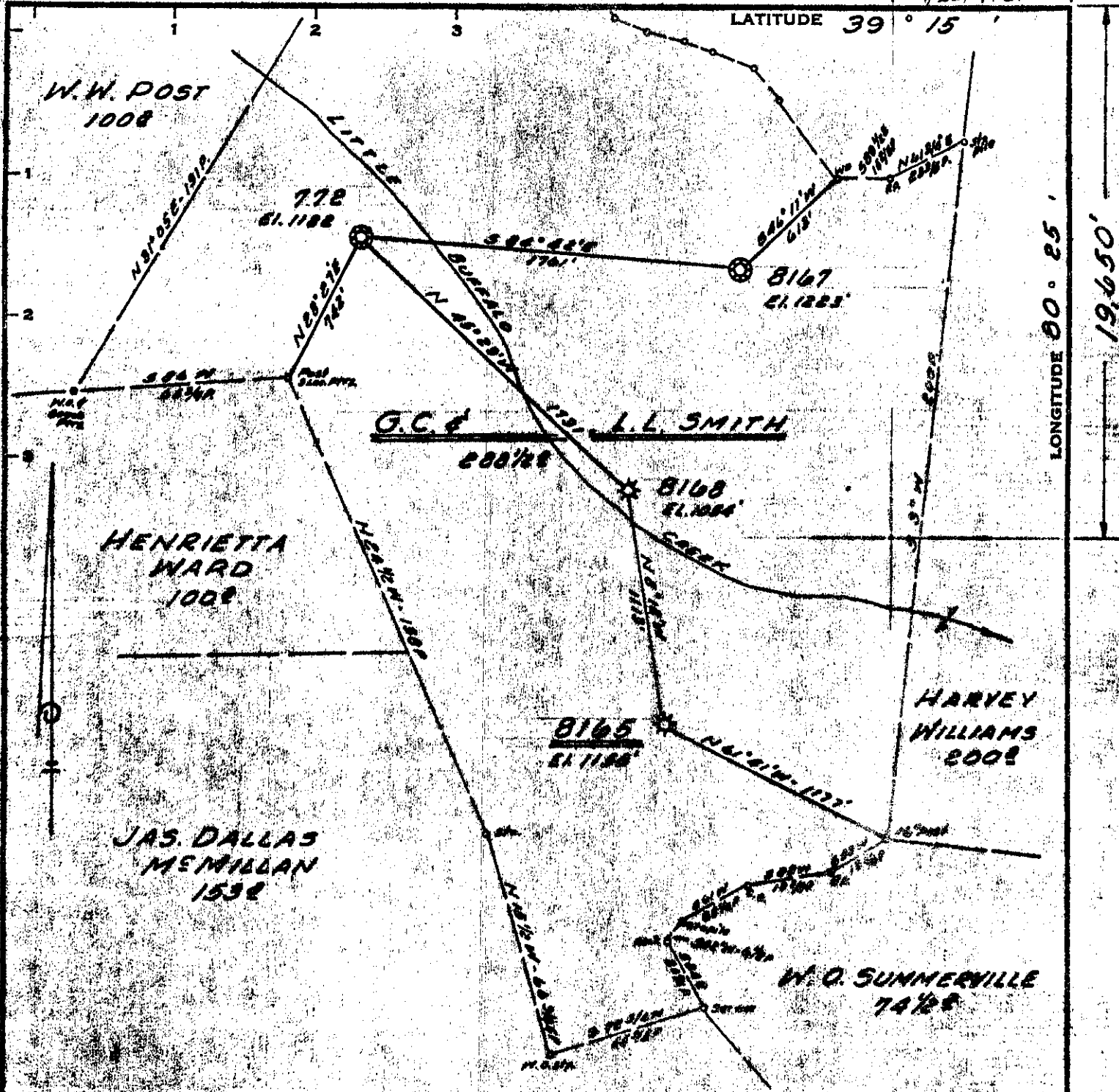
issued 11-5-71
 MAP SHT. 55; 518-E9, F.B. 684 P.12-13

Company CONSOLIDATED GAS SUPPLY CORP.
 Address CLARKSBURG, WEST VA.
 Farm C.G. & L.L. SMITH
 Tract _____ Acres 290 Lease No. 52930
 Well (Farm) No. _____ Serial No. 8165
 Elevation (Spirit Level) 1158'
 Quadrangle WESTON NW
 County HARRISON District UNION
 Engineer Guy H. Bradley
 Engineer's Registration No. 2425
 File No. _____ Drawing No. _____
 Date SEPT. 15, 1971 Scale 1" = 40 POLES

STATE OF WEST VIRGINIA
 DEPARTMENT OF MINES
 OIL AND GAS DIVISION
 CHARLESTON

WELL LOCATION MAP

FILE NO. Ha-589-D-D
~~Deepening Permit Cancelled.~~
~~WVA 1001, MAP-1871 (A)~~
 Denotes location of well on United States Topographic Maps, scale 1 to 62,500, latitude and longitude lines being represented by border lines as shown.
 — Denotes one inch spaces on border line of original tracing.



Minimum Error of Closure 1" IN 200'
 Sources of Elevation CONSOLIDATED GAS SUPPLY CORP
WELL NO 8168 ELEVATION 1058'
 "I, the undersigned, hereby certify that this map is correct to the best of my knowledge and belief and shows all the information required by paragraph 6 of the rules and regulations of the oil and gas section of the mining laws of West Virginia."

New Location
 Drill Deeper
 Abandonment

MAP SHT. 55; 510-E9, F.B. 604 R 12-13

Company CONSOLIDATED GAS SUPPLY CORP
 Address CLARKSBURG, WEST VA.
 Farm G.C. & L.L. SMITH
 Tract _____ Acres 290 Lease No. 52930
 Well (Farm) No. _____ Serial No. 8165
 Elevation (Spirit Level) 1158'
 Quadrangle WESTON NW
 County HARRISON District UNION
 Engineer Guy H. Bradley
 Engineer's Registration No. 24251
 File No. _____ Drawing No. _____
 Date SEPT. 15, 1971 Scale 1" = 40 FEET

STATE OF WEST VIRGINIA
 DEPARTMENT OF MINES
 OIL AND GAS DIVISION
 CHARLESTON

WELL LOCATION MAP
 FILE NO. Map 589-00
 DD permit Canc. - See Mar. 1871-A

+ Denotes location of well on United States Topographic Maps, scale 1 to 62,500, latitude and longitude lines being represented by border lines as shown.
 - Denotes one inch spaces on border line of original tracing.