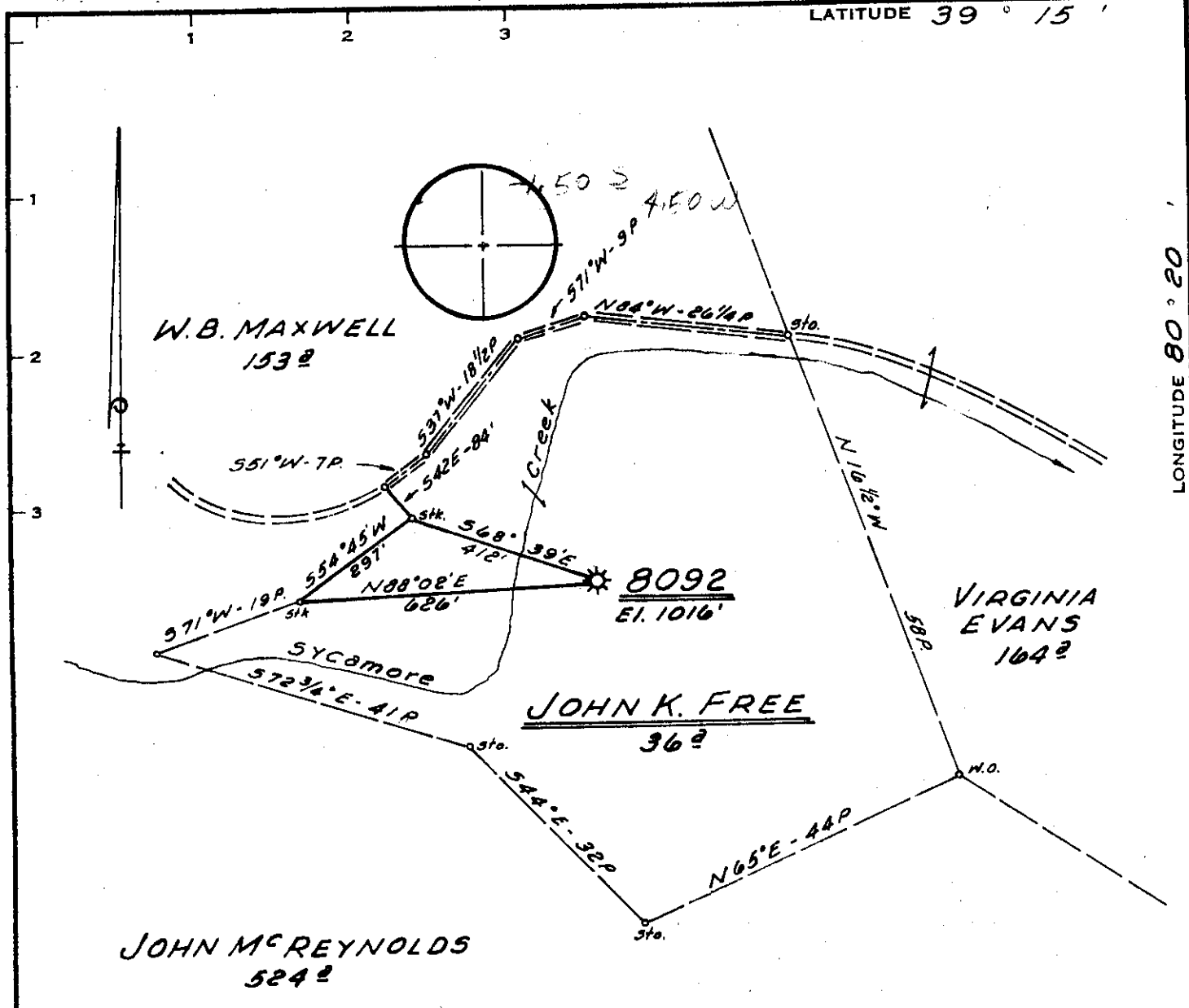


23,300'

LATITUDE 39° 15'

8,000'
LONGITUDE 80° 20'



Minimum Error of Closure 1" IN 200'
 Source of Elevation CONSOLIDATED GAS SUPPLY CORP.
WELL NO 8058 ELEVATION 1013'
 "I, the undersigned, hereby certify that this map is correct to the best of my knowledge and belief and shows all the information required by paragraph 6 of the rules and regulations of the oil and gas section of the mining laws of West Virginia."

- New Location
- Drill Deeper
- Abandonment

MAP SHT. 55; 516-E11, F.B. 887 P 28

Company CONSOLIDATED GAS SUPPLY CORP.
 Address CLARKSBURG, WEST VA.
 Farm JOHN K. FREE
 Tract Acres 36 Lease No. 52881
 Well (Farm) No. Serial No. 8092
 Elevation (Spirit Level) 1016'
 Quadrangle WESTON NC
 County HARRISON District UNION
 Engineer Jackson M. Jarvis
 Engineer's Registration No. 2397
 File No. Drawing No.
 Date SEPT. 17, 1971 Scale 1" = 20 POLES

STATE OF WEST VIRGINIA
 DEPARTMENT OF MINES
 OIL AND GAS DIVISION
 CHARLESTON

WELL LOCATION MAP
 FILE NO. HAR-594-DD

+ Denotes location of well on United States Topographic Maps, scale 1 to 62,500, latitude and longitude lines being represented by border lines as shown.
 - Denotes one inch spaces on border line of original tracing.

RECEIVED

JAN 21 1972



OIL & GAS DIVISION
DEPT. OF MINES

STATE OF WEST VIRGINIA
DEPARTMENT OF MINES
OIL AND GAS WELLS DIVISION

Rotary
Spudder
Cable Tools
Storage
Oil or Gas Well Gas
(KIND)

WELL RECORD

Quadrangle WESTON
Permit No. HAR-591-DD

Company Consolidated Gas Supply Corporation
Address Clarksburg, W. Va.
Farm John K. Tree Acres 36
Location (waters)
Well No. 8092 Elev. 1016'
District Union County Harrison
The surface of tract is owned in fee by
Address
Mineral rights are owned by
Address
Drilling commenced 12-7-71
Drilling completed 12-11-71
Date Shor. Not shot From To
With
Open Flow /10ths Water in Inch
/10ths Merc. in Inch
Volume Show Cu. Ft.
Rock Pressure 225 lbs. 1 hrs.
Oil None bbls. 1st 24 hrs.
WELL ACIDIZED (DETAILS) No
WELL FRACTURED (DETAILS) 12-20-71 With 782 bbl water, 60,000# sand, 500 gal 15% acid
and 2500 HHP
RESULT AFTER TREATMENT (Initial open flow or bbls.) 291,000 cu ft
ROCK PRESSURE AFTER TREATMENT 360# HOURS 11 days
Fresh Water None Feet Salt Water None Feet
Producing Sand Balltown Depth 3077-3105'

Casing and Tubing	Used in Drilling	Left in Well	Packers
Size			Kind of Packer
16			
13			Size of
10			Depth set
8 1/4			
6 5/8			
5 3/16			Perf. top 3072
4 1/2	3201	2201	Perf. bottom 3100
3			Perf. top
2			Perf. bottom
Liners Used			

Attach copy of cementing record.
CASING CEMENTED SIZE No. Ft. Date
Amount of cement used (bags) 111 casing with 100 bags
Name of Service Co. Halliburton
COAL WAS ENCOUNTERED AT None FEET INCHES
FEET INCHES FEET INCHES
FEET INCHES FEET INCHES
WELL FRACTURED (DETAILS) 12-20-71 With 782 bbl water, 60,000# sand, 500 gal 15% acid
and 2500 HHP
RESULT AFTER TREATMENT (Initial open flow or bbls.) 291,000 cu ft
ROCK PRESSURE AFTER TREATMENT 360# HOURS 11 days
Fresh Water None Feet Salt Water None Feet
Producing Sand Balltown Depth 3077-3105'

Formation	Color	Hard or Soft	Top	Bottom	Oil, Gas or Water	Depth	Remarks
Started Drilling @				2884			
Lime & Slate BALLTOWN			2884 3060	3060 3100	Gas	3077-3105'	
Total Depth				3205'			
P.S. card prep		3072-78 3089-92 3096-3100		3205 2884 <u>321</u>	ft. new hole		
					Consolidated Gas Supply Corporation 105 West Main Street Clarksburg, W. Va.		

JAN 31 1972