



Diversified Gas & Oil  
Corporation  
100 Diversified Way  
Pikeville KY, 41051

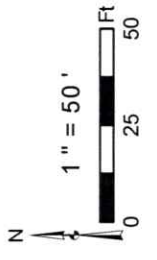
47-033-01210

Well Plugging Map

### Legend

- Well
- Pits
- Pad
- Access Road
- Public Roads

RECEIVED  
Office of Oil and Gas  
OCT 22 2025  
Kentucky Department of  
Environmental Protection



Well No.: 47-033-01210  
UTM83-17, Meters  
North: 4348773.14  
East: 551244.99  
Elev.: 340.87, M  
Elev.: 1118.06 Ft

Secondary Pit

Primary Pit

11/14/2025

Source: Esri, Maxar, Earthstar Geographics, and the GIS User Community





Diversified Gas & Oil  
Corporation  
100 Diversified Way  
Pikeville KY, 41051

47-033-01210

Well Plugging Map

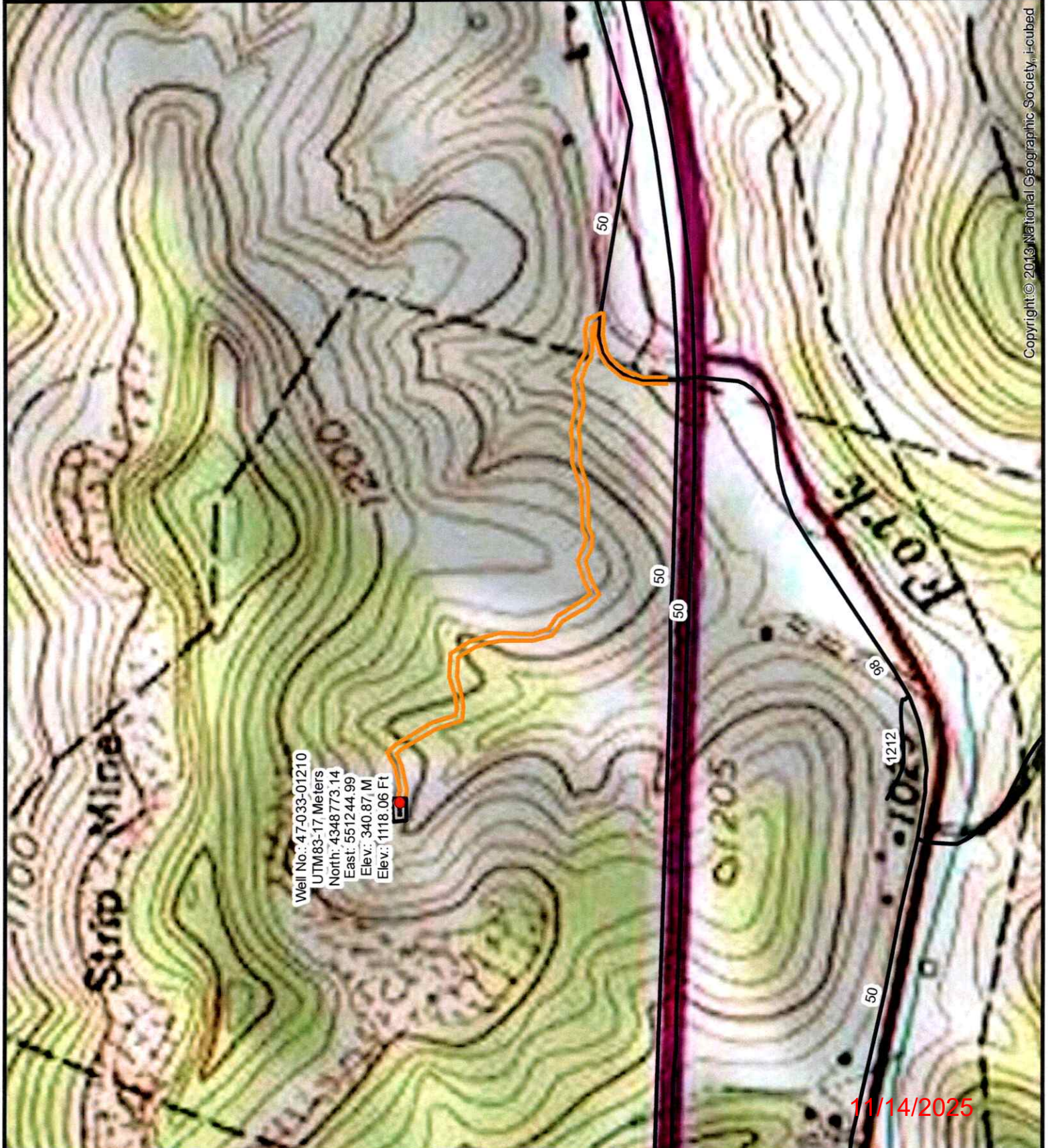
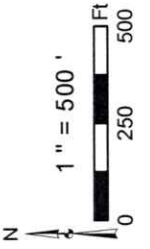
### Legend

- Well
- Pits
- Pad
- Access Road
- Public Roads

RECEIVED  
Office of Oil and Gas

OCT 22 2025

WV Department of  
Environmental Protection





WW-7  
8-30-06



West Virginia Department of Environmental Protection  
Office of Oil and Gas  
**WELL LOCATION FORM: GPS**

API: 4703301210 WELL NO.: PORTER, HATTIE 12479  
FARM NAME: Hattie Goff Porter  
RESPONSIBLE PARTY NAME: Diversified Production, LLC  
COUNTY: Harrison DISTRICT: Coal  
QUADRANGLE: Wolf Summit 7.5'  
SURFACE OWNER: Peyton Despard Fireman  
ROYALTY OWNER: Diversified subsidiaries  
UTM GPS NORTHING: 4348773.14  
UTM GPS EASTING: 551244.99 GPS ELEVATION: 1118.06'

The Responsible Party named above has chosen to submit GPS coordinates in lieu of preparing a new well location plat for a plugging permit or assigned API number on the above well. The Office of Oil and Gas will not accept GPS coordinates that do not meet the following requirements:

1. Datum: NAD 1983, Zone: 17 North, Coordinate Units: meters, Altitude: height above mean sea level (MSL) – meters.
2. Accuracy to Datum – 3.05 meters
3. Data Collection Method:

Survey grade GPS \_\_\_\_: Post Processed Differential \_\_\_\_

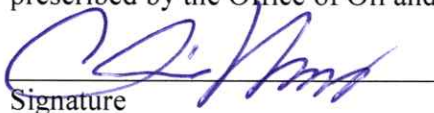
Real-Time Differential \_\_\_\_

Mapping Grade GPS X: Post Processed Differential X

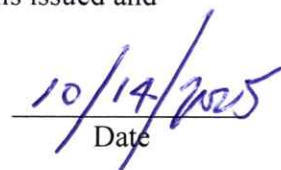
Real-Time Differential \_\_\_\_

4. **Letter size copy of the topography map showing the well location.**

I the undersigned, hereby certify this data is correct to the best of my knowledge and belief and shows all the information required by law and the regulations issued and prescribed by the Office of Oil and Gas.

  
Signature

Chris Veazey - Director of Administration  
Title

  
Date

RECEIVED  
Office of Oil and Gas

OCT 22 2025

WV Department of  
Environmental Protection

11/14/2025