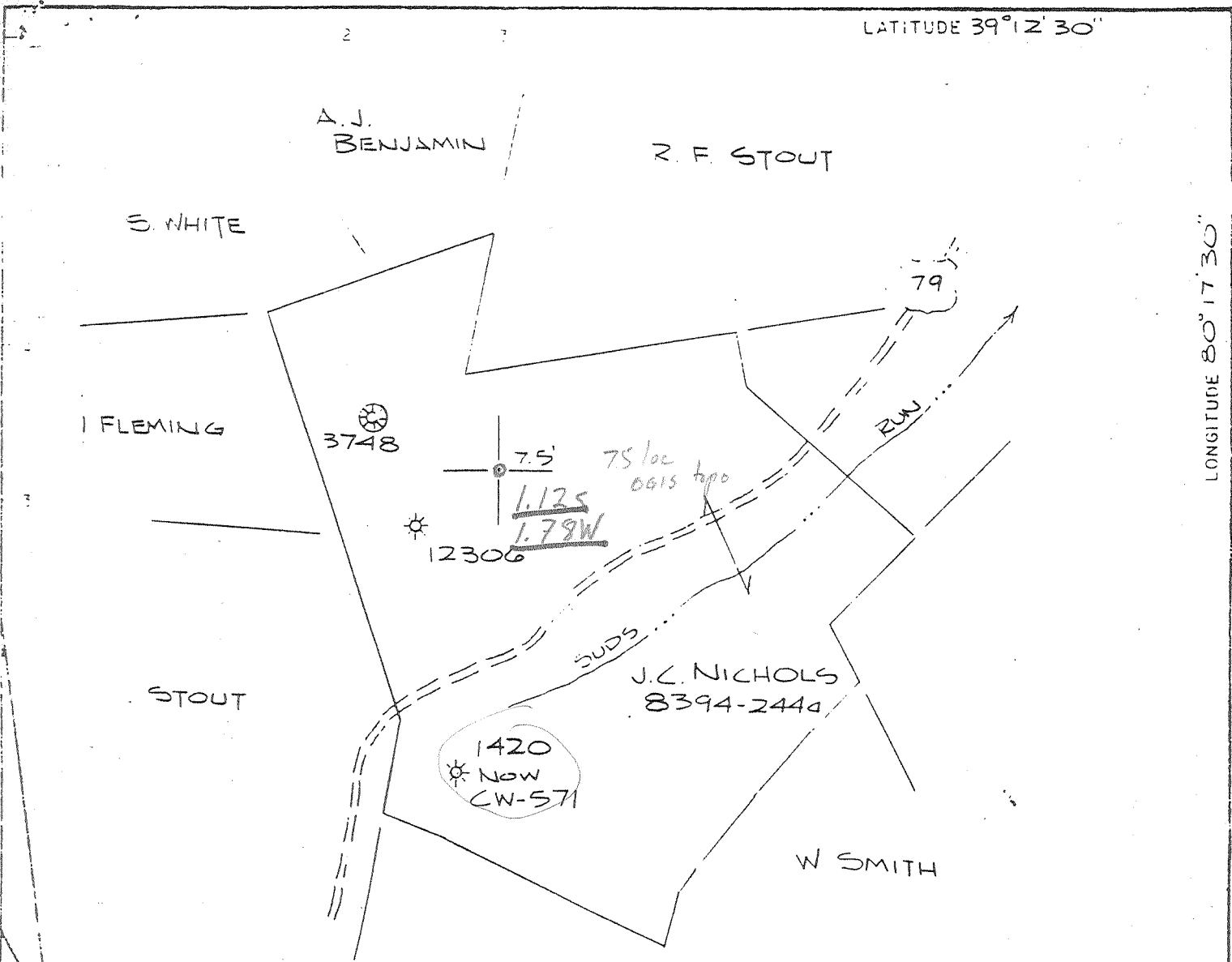


9,250'

LATITUDE 39° 12' 30"

LONGITUDE 80° 17' 30"



J.C. NICHOLS
 8394-2440
 ELK DIST., HARRISON CO., WV.
 MAP SHEET 56 S-19E-15
 TOPO-MOUNT CLARE 7.5'
 SCALE - 1"=1000'

NORTH

033-1303

7.5 LOC
 OGIS topo location
 Mount clare quad
 Harrison County
 Elk district
 Weston 15' NE

033-1303 4.00S
 4.01W

(153)

(153)

Richard (1420)

RECORD

FORMATION	TOP	BOTTOM	OIL AT	GAS AT	WATER AT	FRESH OR SALT
Subbituminous Coal	300	309				
Dunkard Sand	400	650	400-500		1445	
Salt Sand	890	1300				
Marion Sand	1537	1725				
Injun Sand	1870	1960		1595		
Berea Sand	2010	2070				
Gantz Sand	2072	2142				
Fifty Foot Sand	2330	2340				
Thirty Foot Sand	2355	2367				
Stray Sand	2424	2444		2426		
Gordon Sand		2465				
Fourth Sand						
Fifth Sand						
Bayard Sand						
TOTAL DEPTH						

Approved 47-033-1303
 Sept. 18, 1909
 Sept. 23, 1909
 Nov. 19, 1909
 OR Dittman & M=Log \$120 Per Foot

Nov. 19, 1909

DATE TURNED ON
 DATE TURNED OFF
 DATE DISCONNECTED
 SOLD TO
 DATE BOLD
 DATE RE-PURCHASED
 DATE PLUGGED
 DATE ABANDONED

Elevation 1333'

DATE	QTS.	SAND	VOLUME BEFORE	VOLUME AFTER
7-1-20	50	577	16,848	150
7-20-22	20	526		157,490

SHOOTING

DATE	QTS.	SAND	VOLUME BEFORE	VOLUME AFTER
7-1-20	50	577	16,848	150
7-20-22	20	526		157,490

VOLUME AND PRESSURE TESTS

OPENING	POUNDS PRESSURE	1 MIN.	5 MIN.	10 MIN.	30 MIN.	60 MIN.	ROCK	VOLUME	SAND
5 3/4"		50	240	410	770	820	860	1,902,000	577
2"	103 MCF	25	80	130	280	300	325	655,776	"
2"	119 MCF	12	58	83	185	195		368,640	"
2"		18	48	56	80	115		115,968	"
1"		10	35	50	60	100	145	134,400	"
1"		5	20	25	50	50		107,760	"
1"			10	10	20	20	100	65,160	"
1"			10	20	35	57	170	60,848	"
1"			10	20	57	82	175	53,280	"
1"			35	5	30	50	165	33,600	"
1"		10	35	60	105	130	160	33,600	"
1"		8	40	69	105	120	145	79,152	"
1 1/4"		4	16	29	66	92	145	45,178	"
1"		4	18	38	65	86	110	77,547	"
1"								47,629	O.K.

Shover

PACKERS

SIZE	MAKE	SET AT
8X10	B.H.	2247
6X8		2363
5X6	A.	2231
2X5		2360
2X5		
8X2		
5X3	M & C	

INITIAL OIL PRODUCTION

DATE	BARRELS	BAND