

9

LATITUDE

39° 22' 30"

100° 20' 00"

LONGITUDE

1.535
0.03W

7.5 OGIS topo location

7.5' loc

15' loc 4.415
(calc.) 0.03W

Company Hope Natural Gas Co. 2847

Farm W. W. Killison

Elev. 1020' 7.5' topo

Quad Clarksburg / Clarksburg C

County Harrison

District Eagle

WELL LOCATION MAP

File No. 033-1352

LOCATION FOR WELL No. 2842

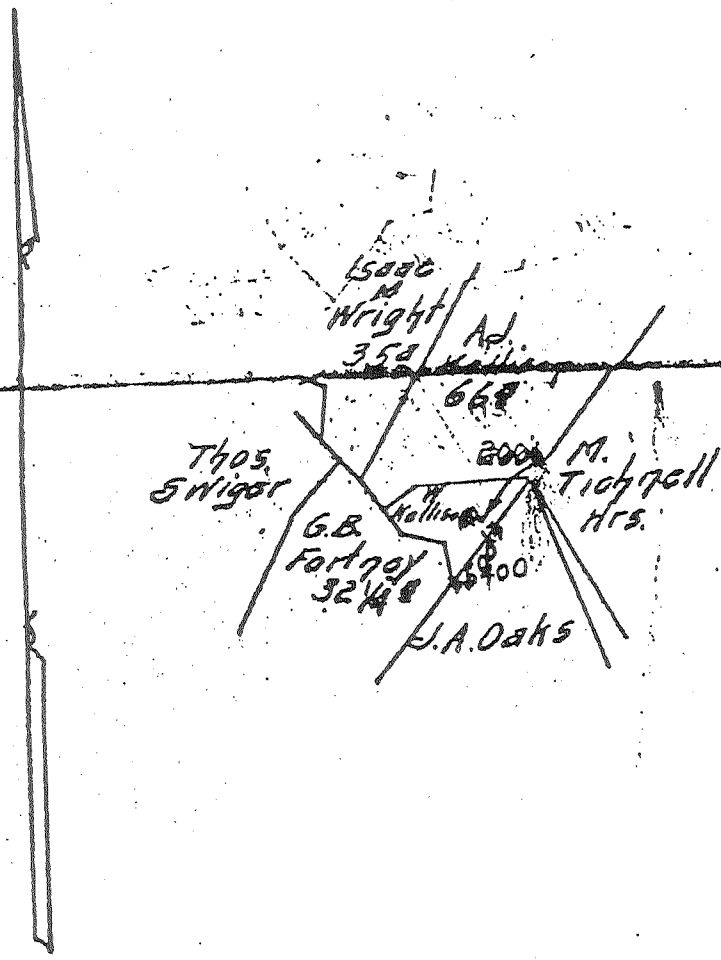
Buffalo DISTRICT
J. W. Kellison Farm, on waters of Lambert's Run
Eagle District, Harrison County, West Virginia.

Lease No. 21377 Acres 6 N S 8 E 16 W

Scale, one inch equals 80 Paces Sent to Charleston 11-1-1912

Location to be Two hundred feet from J. A. Oaks farm at a point
five hundred feet from J. A. Oaks corner as per plat.

033-1352



RESERVE Two hundred feet around the building

SPECIAL INSTRUCTIONS Cement 10" casing. Install 2" casing
Complete well on or before Feb. 10, 1913

Location made 11-11-12 by C. G. Cether as per plat, except as noted. On field map
11-12-12 Returned to Pittsburgh 11-12-12

Location changed on account of instructions from Pittsburgh 11-15-1912
Authorized by J. B. Corwin Date 11-13-1912 Signed by S. H. Bradley

Well No. 2842 H. K. Hollister Farm 10/13 1926
 District Buffalo Commenced 7-7-1926
 N 8 E 16 W **REPAIRS** Completed 10-11-1926

CASING AND TUBING RECORD

Size	Before Repairs	Pulled	Put in Well	After Repairs	Disposition of Amount Pulled
10	1332			1332	
8 1/4	1061 1/2			1061 1/2	
6 7/8	1533 2			1533 2	
5 7/16	—	2577	2577	—	
2	2222	2222	2594	2594	Subd 10/5/26

SHOOTING RECORD

Date	Quarts	Top of Shell	Bottom of Shell	Diameter	Sand	TEST BEFORE SHOT			TEST AFTER SHOT			Test Taken After Shot No. Hours	By Whom Shot
						Reading	Liquid	Opening	Reading	Liquid	Opening		
9/15/26	20	3203	3213	3 1/2	Heavily	3/10	W	1/2	3/10	W	1/2	28	MTCO

RECORD OF ANY DEEPER DRILLING

Formation	Top	Bottom	Names of Drillers	Time (Days)
Commenced drilling at depth of	2565		J. M. W. [unclear]	62
Shell	3130		L. J. [unclear]	29
B. [unclear]	3202	3213	A. E. [unclear]	6
Shaw oil	3206		S. E. [unclear]	29
Total depth	3293			

Formation	Top	Bottom	Names of Tool Dressers	Time (Days)
			C. W. [unclear]	71
			M. C. [unclear]	29
			P. R. [unclear]	29

Size	Kind	Anchor	Amount Above Anchor
1 3/8 x 2	"One"	521	2058

Oil at	Fl. in	Sand
3206	3206	Shawley
3130	3130	Shell

Lower hole abandoned filled up to 2579 ft

VOLUME AND PRESSURE REPORT

BEFORE REPAIRS					
Reading	Liquid	Opening	Rock or Minute Pressure	Sand Gas From	
2 0/10	Water	1 1/2 orifices	Rock 130	20 ft & Fifth	
			75777		

VOLUME TEST

Date of Test	Opening	PITOT TUBE		OPEN FLOW	Sand Gas From
		Reading	Liquid Used	Lbs.	
10/5/26	" Casing				
6 hrs	1 1/2" Tubing	2 3/10	Water	.81 r.b.	30 ft & Fifth

PRESSURE TEST

Date of Test	Opening	1 Min.	2 Min.	3 Min.	4 Min.	5 Min.	6 Min.	7 Min.	8 Min.	9 Min.	10 Min.	30 Min.	60 Min.	Hrs. Run
10/5/26	" Casing													
6 hrs	2" Tubing	10	12	14	16	18	19	20	21	22	22	55	70	24 1/2

OIL: From — Sand —
 Estimated Production — Bbl. per Day —
 Remarks: Lower hole abandoned filled up to 2579
 1-2" plug on bottom of casing
 1-1 1/2" plug put in on top packer
 J. M. [Signature] FOREMAN