

LATITUDE

39° 10' 00"

80° 27' 30"

LONGITUDE

+ 7.510C

1.39S

1.70W

7'5 OGIS topo location

7.5' loc

15' loc
(calc.)

1.39S

3.93W

Company Reserve Gas 317

Farm Mary Robinson

Elevation 1009' tops out.

Quad West Milford/Weston, NC

County Harrison

District Union

WELL LOCATION MAP

File No. 033-1551

RESERVE GAS COMPANY.

LOCATION FOR WELL No. 317

DISTRICT

Maryland Harrison County, West Virginia

Lease No. 14-1 Acres 60 S. 21 E. 6 W.

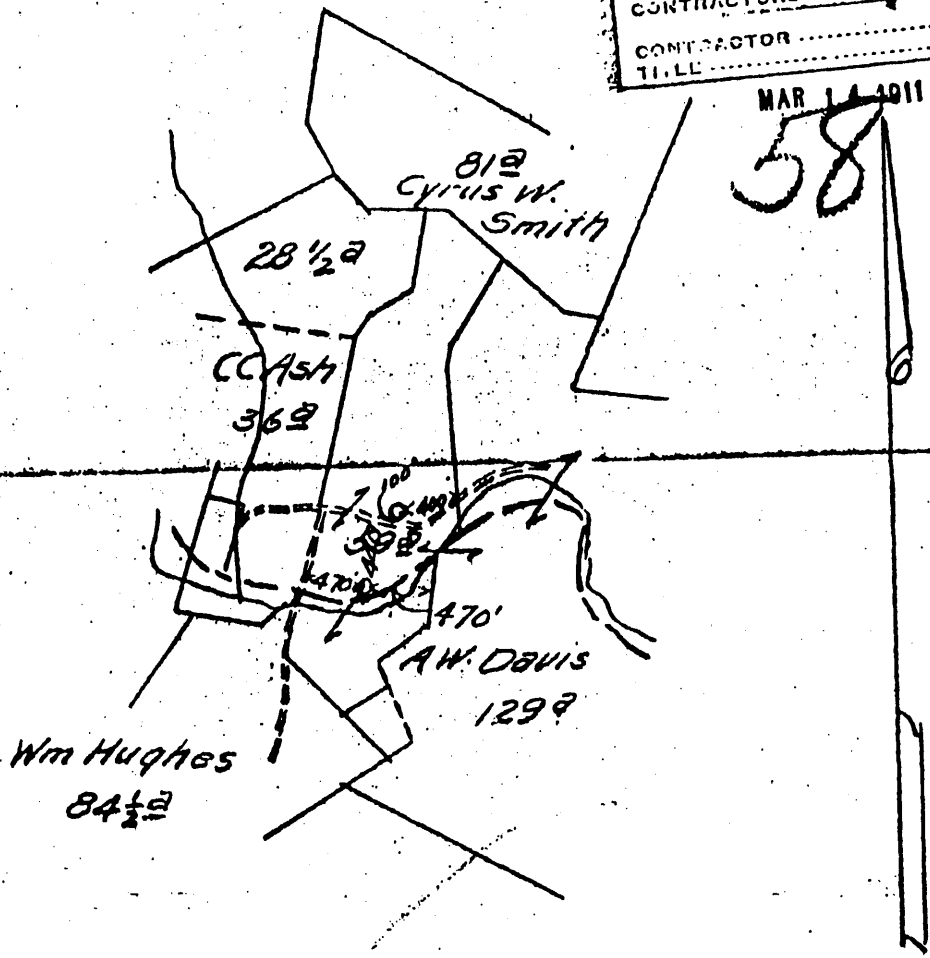
Scale, one inch equals 80 Poles Sent to G.P.C. 12-6 1910

Location to be 400 feet from A.W. Davis farm line and 100 feet from County Road

ENTERED	APR 12 1911 G.A.K.
WELL ROCK	
LEAD RECORD	
LEAST BUCKET	
VALVE TAP	
LINER TAP	
LOCATION BOOK	
CONTRACTOR'S PLAT	
CONTRACTOR	
TITLE	

MAR 14 1911 H.B.S.

033-1551



RESERVE Three hundred feet of the buildings

SPECIAL INSTRUCTIONS Complete well on or before March 7, 1911

Location made 12-10-10 by S.H. Bradley As per plat, except as noted. On field map 12-13-10 Returned to Pittsburgh 12-13-10

Location changed on account of instance of Mr. Davis and Sand Pump

Authorized by J.B. Corwin Date 12-13 1910 Signed S.H. Bradley