



West Virginia Department of Environmental Protection
Office of Oil and Gas
WELL LOCATION FORM: GPS

API: 47-033-01635P WELL NO.: WV 650326 (Hawker #139)

FARM NAME: Hawker

RESPONSIBLE PARTY NAME: EQT Production Company

COUNTY: Harrison DISTRICT: Eagle

QUADRANGLE: Wallace 7.5'

SURFACE OWNER: Judith M. Moore

ROYALTY OWNER: Thelma Baginsky et. al.

UTM GPS NORTHING: 4,365,456

UTM GPS EASTING: 549,953 GPS ELEVATION: 343 m (1,124 ft)

The Responsible Party named above has chosen to submit GPS coordinates in lieu of preparing a new well location plat for a plugging permit or assigned API number on the above well. The Office of Oil and Gas will not accept GPS coordinates that do not meet the following requirements:

- Datum: NAD 1983, Zone: 17 North, Coordinate Units: meters, Altitude: height above mean sea level (MSL) – meters.
- Accuracy to Datum – 3.05 meters
- Data Collection Method:
Survey grade GPS : Post Processed Differential
Real-Time Differential
Mapping Grade GPS : Post Processed Differential
Real-Time Differential
- Letter size copy of the topography map showing the well location.**

I the undersigned, hereby certify this data is correct to the best of my knowledge and belief and shows all the information required by law and the regulations issued and prescribed by the Office of Oil and Gas.

Ben R. Singler
Signature
9-9-11
Date

P.S. 2092
Title

RECEIVED
OFFICE OF OIL & GAS
OCT 25 2011
WV DEPARTMENT OF ENVIRONMENTAL PROTECTION

Topo Quad: Wallace

Scale: 1" = 2000' *33-01635P*

County: Harrison

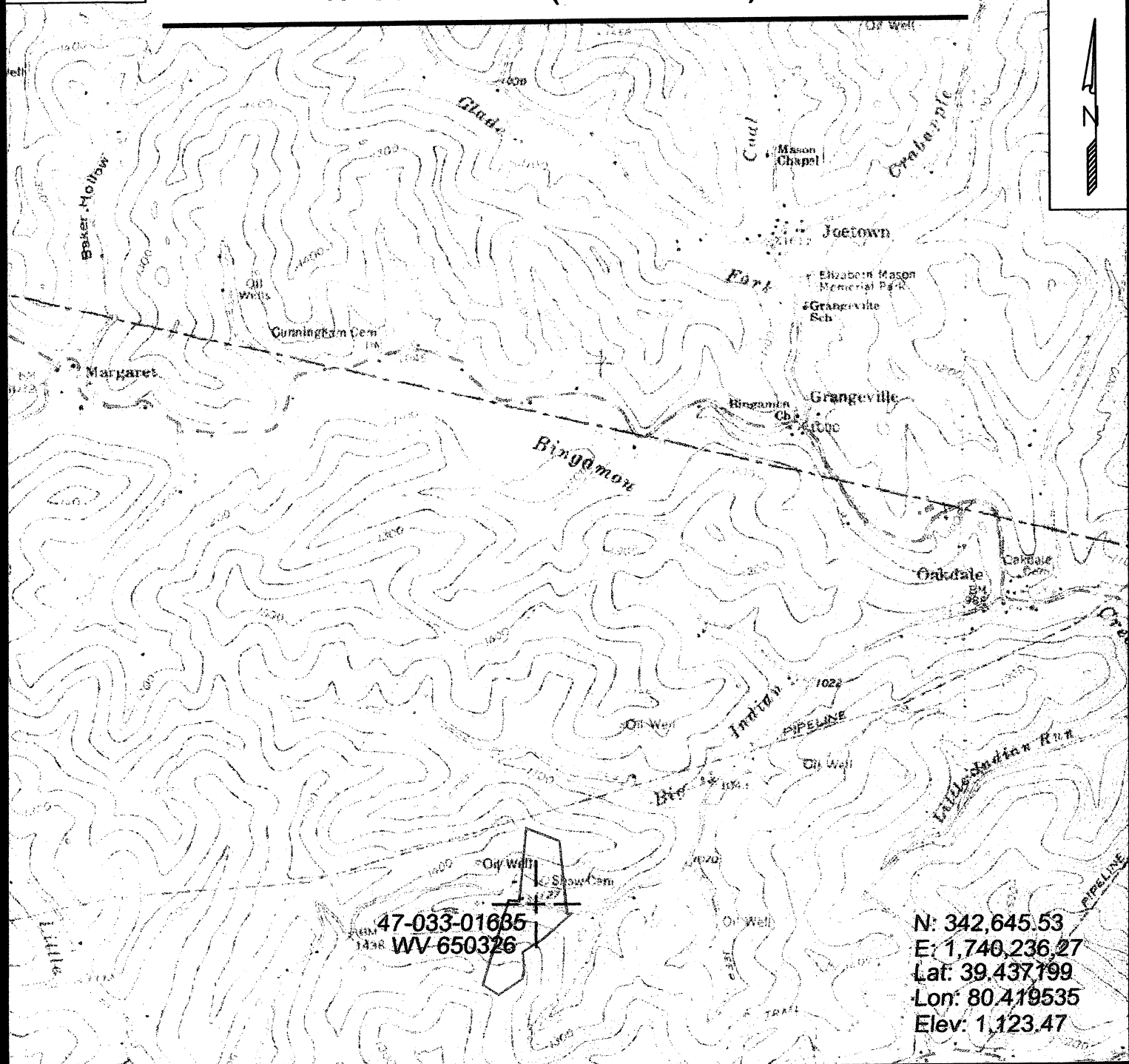
Date: Aug. 11, 2011

District: Eagle

Project No: 70-36-00-08

47-033-01635 (WV 650326)

Topo



47-033-01635
WV-650326

N: 342,645.53
E: 1,740,236.27
Lat: 39.437199
Lon: 80.419535
Elev: 1,123.47



SURVEYING AND MAPPING SERVICES PERFORMED BY:
ALLEGHENY SURVEYS, INC.

1-800-482-8606
P.O. BOX 438
BIRCH RIVER, WV 26610
PH: (304) 649-8606
FAX: (304) 649-8608

PREPARED FOR:

EQT Production Company

1710 Pennsylvania Ave.
Charleston, WV 25302