

LATITUDE 39° 12' 30"

80° 17' 30"

LONGITUDE

1.265
0.49W

7'5 OGIS topo location

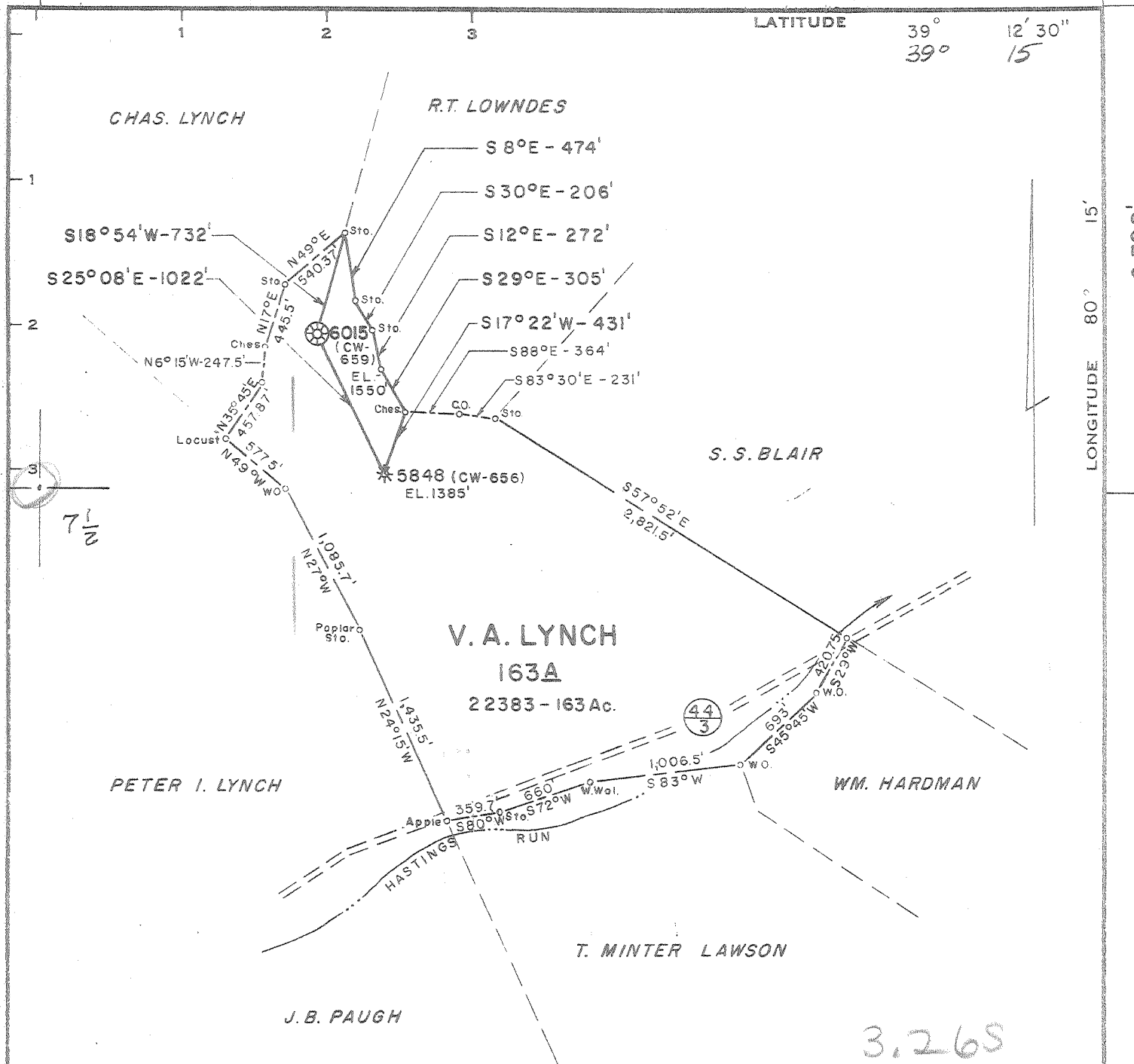
7.5' loc 15' loc 4.145
(calc.) 2.72 W

Company CNS (6015)
Farm VA Lynch (CW-699)

Quad Mount Clare/Western NE
County Harrison
District Elk

WELL LOCATION MAP

File No. 033-1702
(was 033 31994)



3,265
7,23W

Minimum Error of Closure 1' in 200'
 Source of Elevation Fork Road Blair Farm El. = 1022'

"I, the undersigned, hereby certify that this map is correct to the best of my knowledge and belief and shows all the information required by paragraph 6 of the rules and regulations of the oil and gas section of the mining laws of West Virginia."

New Location
 Drill Deeper
 Re-Abandonment 5/14/79

Map Sh.-56 S-19 E-17; F.B.- 516, Pg. 10-13

Company	CONSOLIDATED GAS SUPPLY CORP.		
Address	CLARKSBURG, W.VA.		
Farm	V. A. LYNCH		
Tract	Acres	163	Lease No. 22383 (CW-659)
Well (Farm) No.	Serial No.	6015	
Elevation (Spirit Level)	1550'		
Quadrangle	MOUNT CLARE	7 1/2	NE
County	HARRISON	District	ELK
Engineer	Daniel M. Radcliffe		
Engineer's Registration No.	LLS-74		
File No.	Drawing No.		
Date	5-10-79	Scale	1" = 1000'

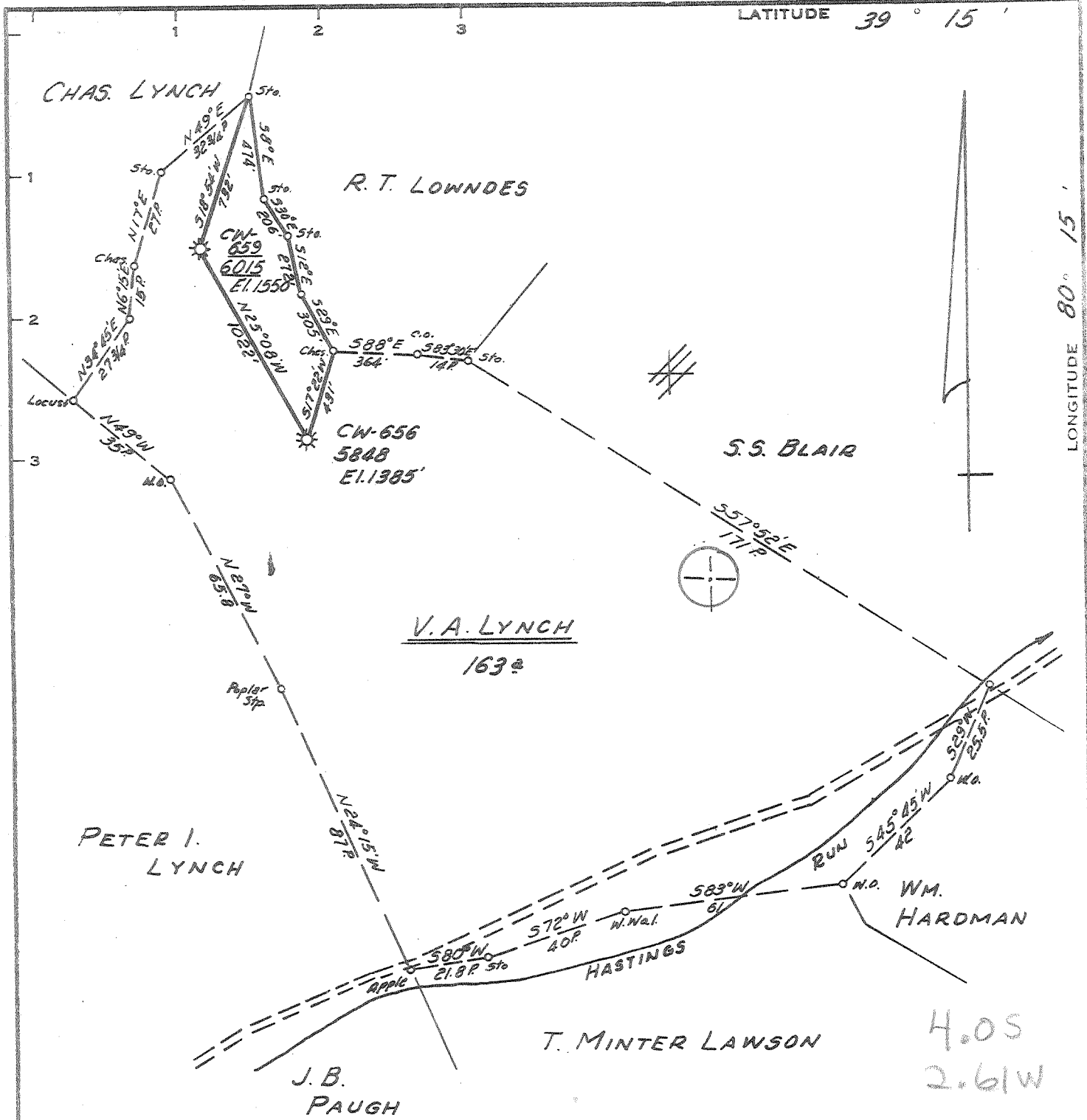
STATE OF WEST VIRGINIA
 DEPARTMENT OF MINES
 OIL AND GAS DIVISION
 CHARLESTON

WELL LOCATION MAP
 FILE NO. 47-033-1994-A
 now 1702

+ Denotes location of well on United States Topographic Maps, scale 1 to 24,000 latitude and longitude lines being represented by border lines as shown.

— Denotes one inch spaces on border line of original tracing.

MAY 23 1979



Minimum Error of Closure 1' IN 200'
 Source of Elevation ROAD FORK ON BLAIR FARM EL. 1022'

"I, the undersigned, hereby certify that this map is correct to the best of my knowledge and belief and shows all the information required by paragraph 6 of the rules and regulations of the oil and gas section of the mining laws of West Virginia."

New Location
 Drill Deeper
 Abandonment 7/6/77

MAP SHEET 56 519 E17 F.B. 516 P.10-13

Company CONSOLIDATED GAS SUPPLY CORP
 Address CLARKSBURG WEST VIRGINIA
 Farm V. A. LYNCH, NELLIE WILLIAMS
 Tract Acres 163 Lease No. 22383
 Well (Farm) No. CW-659 Serial No. 6015
 Elevation (Spirit Level) El. 1550
 Quadrangle WESTON NE
 County HARRISON District ELK
 Engineer Danell M. Radcliffe
 Engineer's Registration No. L.L.S. 74
 File No. _____ Drawing No. _____
 Date JUNE 30, 1977 Scale 1" = 40 FEET

STATE OF WEST VIRGINIA
 DEPARTMENT OF MINES
 OIL AND GAS DIVISION
 CHARLESTON

WELL LOCATION MAP
 FILE NO. HAR-1994-A
 now: Harr. 1702

+ Denotes location of well on United States Topographic Maps, scale 1 to 62,500, latitude and longitude lines being represented by border lines as shown.

— Denotes one inch spaces on border line of original tracing.

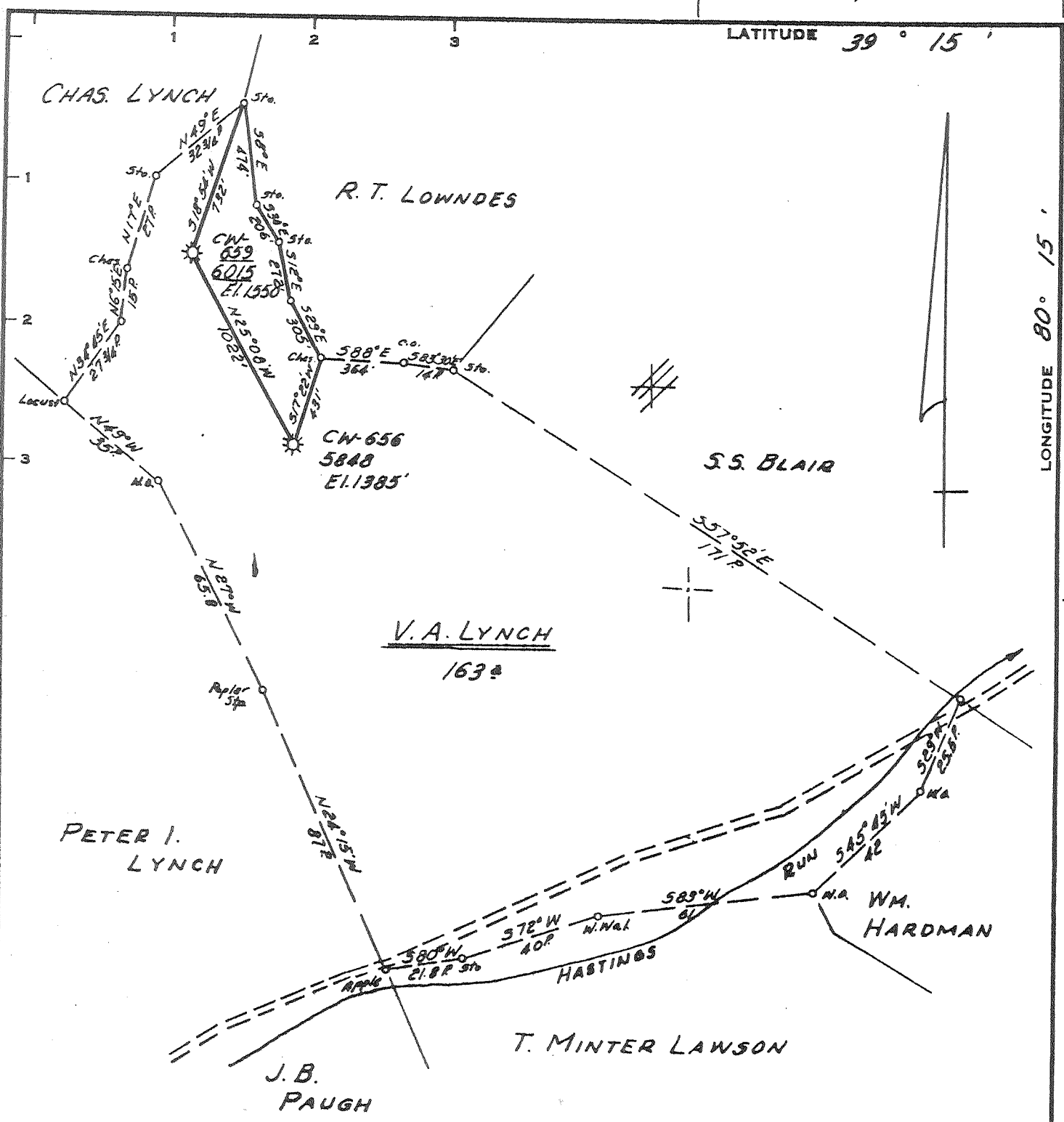
JUL 27 1977

4.05
2.61W

14,650'
15,000'

LATITUDE 39° 15'

LONGITUDE 80° 15'



Minimum Error of Closure 1' IN 200'

Source of Elevation ROAD FORK ON BLAIR FARM EL. 1022'

"I, the undersigned, hereby certify that this map is correct to the best of my knowledge and belief and shows all the information required by paragraph 6 of the rules and regulations of the oil and gas section of the mining laws of West Virginia."

- New Location
- Drill Deeper
- Abandonment

~~7/1/77~~ - Cancelled MAP SHEET 56 S19 E17 F.B. 516 R10-13

Company CONSOLIDATED GAS SUPPLY CORP.
 Address CLARKSBURG WEST VIRGINIA
 Farm V. A. LYNCH, NELLIE WILLIAMS
 Tract _____ Acres 163 Lease No. 22383
 Well (Farm) No. _____ Serial No. CN-639
 Elevation (Spirit Level) El. 1550
 Quadrangle WESTON
 County HARRISON District ELK
 Engineer Danell M. Kadcliffe
 Engineer's Registration No. L.L.S. 74
 File No. _____ Drawing No. _____
 Date JUNE 30, 1977 Scale 1" = 40 FEET

STATE OF WEST VIRGINIA
 DEPARTMENT OF MINES
 OIL AND GAS DIVISION
 CHARLESTON
 Cancelled
WELL LOCATION MAP
 FILE NO. HAR-1994-A

REISSUED AS: HAR-Har-1702
 + Denotes location of well on United States Topographic Maps, scale 1 to 62,500, latitude and longitude lines being represented by border lines as shown.
 — Denotes one inch spaces on border line of original tracing.