

39° 25' 00"

Latitude ✓

80° 30' 00"

Longitude

Topo Location

7.5' Loc.	<u>1.435</u>	15' Loc.	<u>1.435</u>
	<u>1.67W</u>	(calc.)	<u>1.67W</u>

Company Pennzoil #4

Farm J. N. Coffman

15' Quad Centerpoint (EC)  
(sec.)

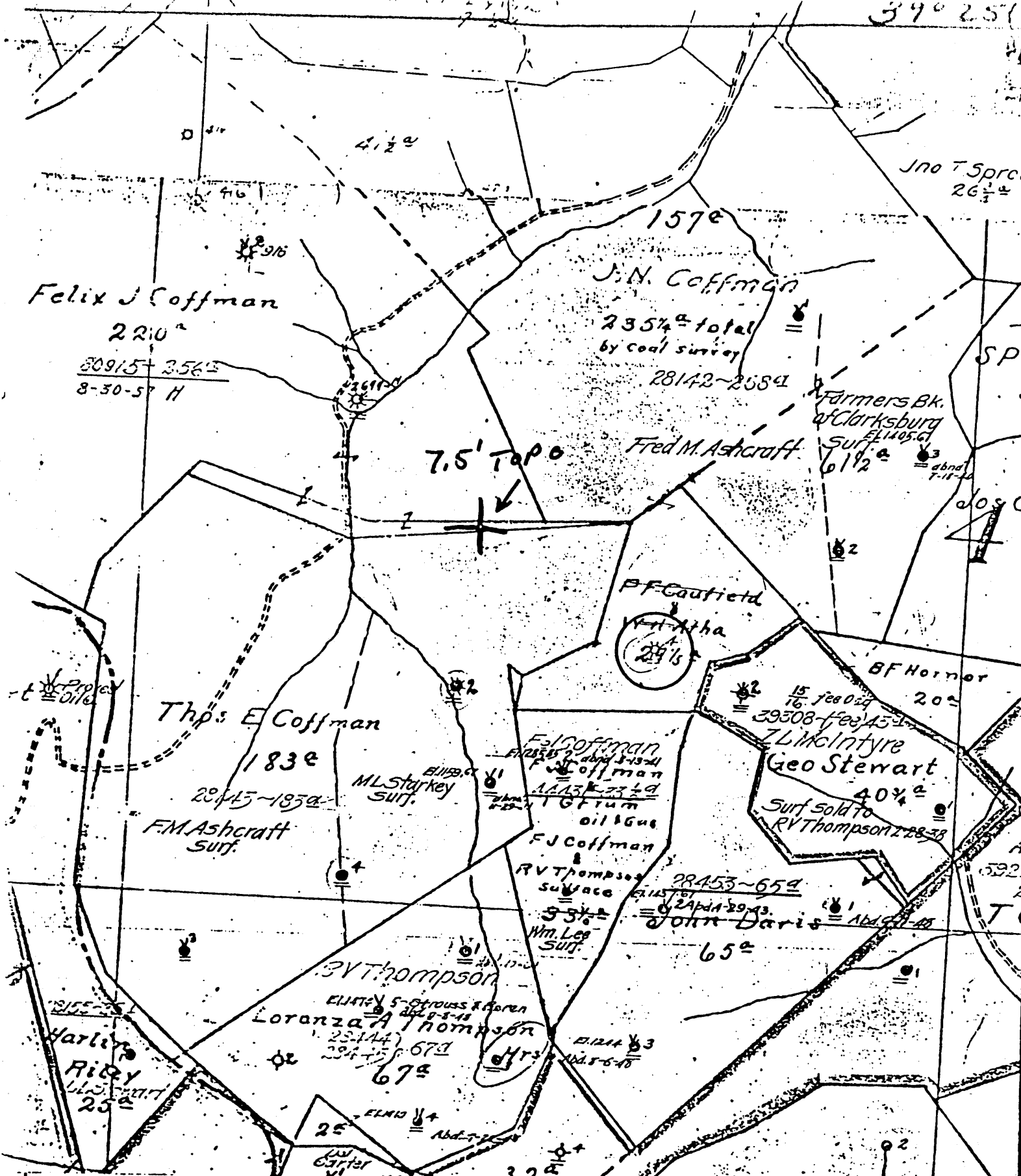
7.5' Quad Folsom

District Sardis

WELL LOCATION PLAT

County 033 Permit 1732

39° 25'



(+) DENOTES LOCATION OF WELL ON UNITED STATES TOPOGRAPHIC MAPS



DATE Nov. 30 1978  
 OPERATOR'S WELL NO 4  
 API WELL NO. 47-033-1732  
 STATE COUNTY PERMIT

FORM IV-6  
 (8-78)

N39 S4 E5 STATE OF WEST VIRGINIA  
 DEPARTMENT OF MINES

OIL AND GAS DIVISION  
 WELL TYPE: OIL  GAS  LIQUID INJECTION  WASTE DISPOSAL   
 (IF "GAS", PRODUCTION  STORAGE  DEEP  SHALLOW   
 LOCATION: ELEVATION \_\_\_\_\_ WATER SHED MCINTIRE FK OF ROCK CAMP  
 DISTRICT SARDIS COUNTY HARRISON  
 QUADRANGLE FOLSOM 7.5'

SURFACE OWNER \_\_\_\_\_ ACREAGE \_\_\_\_\_  
 OIL & GAS ROYALTY OWNER \_\_\_\_\_ LEASE NO. \_\_\_\_\_ LEASE ACREAGE \_\_\_\_\_

PROPOSED WORK: DRILL  CONVERT  DRILL DEEPER  REDRILL  FRACTURE OR STIMULATE  PLUS OFF OLD FORMATION  PERFORATE NEW FORMATION  OTHER PHYSICAL CHANGE IN WELL (SPECIFY) \_\_\_\_\_

PLUS AND ABANDON  CLEAN OUT AND REPLUG   
 TARGET FORMATION \_\_\_\_\_ ESTIMATED DEPTH \_\_\_\_\_  
 WELL OPERATOR Pennzoil Company DESIGNATED AGENT James A. Crews  
 ADDRESS P. O. Box 1588 ADDRESS P. O. Box 1588  
Parkersburg, WV 26101 Parkersburg, WV 26101

Well No. 11 *J. N. Loffman* Farm Acres  
 Lease No. *Savage* District *Harrison* County *W. Va.* State  
*D. O. O. Co* Contractor *D. O. O. Co* Contractor  
 Drilling Commenced *June 28* 1916 Drilling Completed *Sept 15* 1916  
 N. S. E. W.

ROCK FORMATION	TOP	BOTTOM	STEEL LINE MEASUREMENT	REMARKS
<i>Pittsburg coal</i>	<i>1242</i>	<i>1250</i>	<i>1250</i>	
<i>Little Blueford</i>	<i>1620</i>	<i>1665</i>		
<i>Gas Sand</i>	<i>1825</i>	<i>1890</i>		
<i>Maxon Sand</i>	<i>2328</i>	<i>2400</i>		
<i>Little Luni</i>	<i>2493</i>	<i>2505</i>		
<i>Little Luni</i>	<i>2506</i>	<i>2509</i>		
<i>Big Luni</i>	<i>2509</i>	<i>2546</i>		
<i>Big Luni</i>	<i>2546</i>	<i>2646</i>		
<i>Fifty foot Sand</i>	<i>3122</i>	<i>3133</i>		
<i>Hard " "</i>	<i>3223</i>	<i>3241</i>		
<i>Wood's Slaty "</i>	<i>3269</i>	<i>3320</i>	<i>3320</i>	
<i>Gas</i>	<i>3304</i>	<i>3311</i>	<i>3311</i>	
<i>Total depth</i>		<i>3321</i>	<i>3321</i>	

*Shot 6-29-42 - 20 lbs. C 3304 ft.*

CASING RECORD AS TALLIED. NOT STEEL LINE MEASUREMENT

SIZE	PUT IN WELL		PULLED OUT		LEFT IN WELL		Shot Date Amount Sand Result
	FEET	IN.	FEET	IN.	FEET	IN.	
<i>10</i>	<i>315</i>		<i>315</i>				<i>Packer Size 2 x 5/16"</i> <i>Depth Set 3276</i>
<i>8</i>	<i>1640</i>		<i>1640</i>				
<i>6 3/8</i>	<i>2544</i>						
<i>5 1/16</i>	<i>315</i>						
<i>2"</i>	<i>3318</i>						

Production First 24 Hours

Bbls. Gas Test *10/10 mer 2" 622 m.s*

Approved by *E. E. Reider*

Superintendent