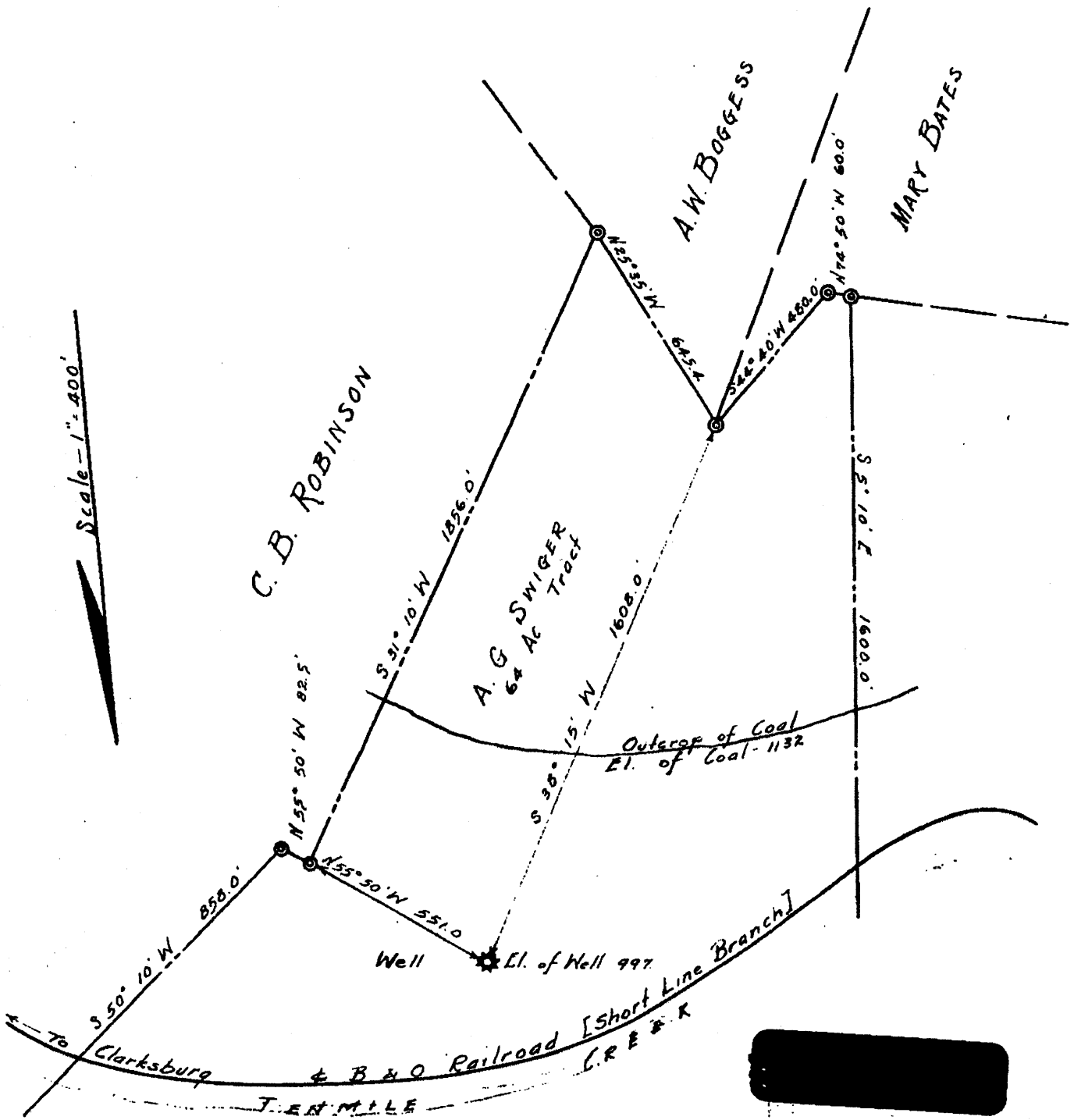


Plat of the location of Well No of the E. & C. GAS Co. of Lumberport, West Virginia, on the A. G. Swiger Farm, consisting of 64 Acres, located in Eagle District, Harrison County



Engineer's Certificate

33-2326

I, the undersigned, hereby certify that this map is correct and shows all the information, to the best of my knowledge and belief, required by the oil and gas section of the mining laws of West Virginia

Homer Bros Engineers, Perth, W. Va.
Engineer

Acknowledged before me, a Notary Public

this 24th day of Sept 1922

Signed John A. Owens

My commission expires 27 day Jan 1920

[08-78]

WELL OPERATOR'S REPORT

Operator's Well No. EC-1

OF DRILLING, FRACTURING AND/OR STIMULATING, OR PHYSICAL CHANGE

API Well No. 27-033-2326
State County Permi

TYPE: Oil ___ / Gas X / Liquid Injection ___ / Waste Disposal ___
(If "Gas", Production X / Underground storage ___ / Deep ___ / Shallow X /)
Elevation: 997 Watershed: Ten Mile Creek
District: Eagle County: Harrison Quadrangle: SW/4, Clarksburg

OPERATOR E. & C. Gas Company DESIGNATED AGENT Lorna Hill
Address 211 Main St. Address 211 Main St.
Lumberport, W. Va. 26386 Lumberport, W. Va. 26386

WORK: Drill ___ / Convert ___ / Drill deeper X / Redrill ___ / Fracture or stimulate ___
Plug off old formation ___ / Perforate new formation ___
Other physical change in well (specify) _____

ISSUED ON N/A, 19___ OIL & GAS INSPECTOR FOR THIS WORK:
Name _____
Address _____

LOGICAL TARGET FORMATION: Benson Sand Depth: 4162 feet
Depth of completed well, 4386 feet Rotary ___ / Cable Tools X
Water strata depth: Fresh, N/A feet; salt, N/A feet.
Coal seam depths: Below coal Is coal being mined in the area? Yes
Work was commenced June 15, 19 33, and completed N/A, 19___

LOGGING AND TUBING PROGRAM

LOGGING OR TUBING TYPE	SPECIFICATIONS				FOOTAGE INTERVALS		CEMENT FILL-UP OR SACKS (Cubic feet)	PACKERS
	Size	Grade	Weight per ft	New	Used	For drilling		
Drill pipe								Kinds
Production casing	5 1/2					2630	2630	Sizes 3" x 5 1/2" Comb
Production casing	3		10	X		4386	4386	Hookwall-Anchor
								Depths set 2900'
								Perforations:
								Top Bottom

FLOW DATA
Producing formation Benson Pay zone depth 4162-4234 feet
Gas: Initial open flow, 32 Mcf/d Oil: Initial open flow, 0 Bbl/d
Final open flow, N/A Mcf/d Final open flow, 0 Bbl/d
Time of open flow between initial and final tests, ___ hours
Static rock pressure, 100 psig (surface measurement) after 1 hours shut in
[If applicable due to multiple completion--]

Second producing formation _____ Pay zone depth _____ feet
Gas: Initial open flow, _____ Mcf/d Oil: Initial open flow, _____ Bbl/d
Final open flow, _____ Mcf/d Final open flow, _____ Bbl/d
Time of open flow between initial and final tests, ___ hours
Static rock pressure, _____ psig (surface measurement) after ___ hours shut in

33-2326

DETAILS OF PERFORATED INTERVALS, FRACTURING OR STIMULATING, PHYSICAL CHANGE, ETC.

Stray sand shot @3695-3698 with 15 quarts of nitroglycering

No other shooting record

WELL LOG

FORMATION	Color	Hard or Soft	Top Feet	Bottom Feet	Remarks Including indication of all fres and salt water, coal, oil and gas
Start				2390	
Drilled 6" Lime				2630	
Salt					
Lime Shells			2630	2684	
Sand			2684	2697	
Lime & Slate			2697	2942	
Speechly			2942	2962	Gas 2947
Lime & Slate			2962	3114	
Balltown			3114	3205	Gas 3160-18/10 1" 3181-34/10 1 1/4
Lime and Slate			3205	3683	
Horus Sand			3683	3715	Gas 3695-3699
Hard Sand			3715	3875	
Lime and Slate			3875	3985	Gas 3987-3995-4/10 in 1'
Lime and Slate			4005	4162	
Bera				4234 1/2	
and			4319	4325	
Bottom				4386	

(Attach separate sheets to complete as necessary)

E. and Gas Company
Well Operator
By [Signature]
Its Agent J. W. Hill

NOTE: Regulation 2.02(i) provides as follows:
"The term 'log' or 'well log' shall mean a systematic, detailed geological record of all formations, including coal, encountered in the drilling of a well."

Volume 7
Deep Well Records 1936

DEEP WELL RECORDS

WEST VIRGINIA GEOLOGICAL SURVEY 159

- 5034 - 5042 Slate, brown
- 5042 - 5043 Lime
- 5043 - 5052 Lime shell
- 5052 - 5064 Lime, dark-gray
- 5064 - 5075 Slate, dark
- 5075 - 5088 Lime, dark
- 5088 - 5097 Lime, gray
- 5097 - 5102 Slate, brown
- 5102 - 5116 Slate, black
- 5116 - 5124 Slate, gray, and lime shells
- 5124 - 5128 Shells, lime
- 5128 - 5138 Lime, dark
- 5138 - 5142 Slate, brown
- 5142 - 5190 Lime, black
- 5190 - 5205 Gray slate and dark lime
- 5205 - 5217 Dark slate and lime shells
- 5217 - 5231 Slate, black
- 5231 - 5396 Slate, dark
- 5396 - 5440 Slate, black
- 5440 - 5463 Slate, brown
- 5463 - 5518 Slate, dark
- 5518 - 5537 Slate, gray
- 5537 - 5657 Slate, black
- 5657 - 5686 Slate, dark
- 5686 - 5692 Lime
- 5692 - 5876 Slate, gray
- 5876 - 5881 Lime, hard, gray
- 5881 - 6034 Slate, gray, gray
- 6034 - 6037 Lime shell,
- 6037 - 6050 Lime, gritty
- 6050 - 6055 Lime, dark
- 6055 - 6068 Slate, gray
- 6068 - 6158 Slate, dark
- 6158 - 6295 Slate, gray
- 6295 - 6315 Slate, dark
- 6315 - 6327 Slate, white
- 6327 - 6367 Slate, dark
- 6367 - 6387 Shale, dark
- 6387 - 6407 Shale, dark
- 6407 - 6442 Shale, brown
- 6442 - 6447 Lime shell
- 6447 - 6478 Shale, dark
- 6478 - 6510 Shale, brown
- 6510 - 6530 Slate, dark
- 6530 - 6536 Shale, black
- 6536 - 6540 Lime shells
- 6540 - 6550 Shale, black
- 6550 - 6580 Lime, black
- 6580 - 6585 Lime, gray
- 6585 - 6617 Lime, dark
- 6617 - 6625 Shale, brown
- 6625 - 6645 Slate, dark
- 6645 - 6665 Slate, brown (gas pocket, 6648')
- 6665 - 6689 Slate, black (gas pocket, 6675-6681')
- 6689 - 6711 Slate, dark

- 6711 - 6719 Slate, black and 6800')
- 6719 - 6734 Shale, dark (gas pocket, 6734')
- 6734 - 6777 Slate, dark (gas pocket, 6766-6775')
- 6777 - 6810 Slate, dark (gas pocket, 6794', 6798'

★ Gilbert Swiger No. 33-2326 Well

Eagle District, Harrison County, W. Va.
By Lumberport-Shinnston Gas Co., Lumberport, W. Va.
On south side of Tennile Creek, at Rosebud, 1.0 mi. S.E. of Dola, and 1.4 mi. N.W. of Robey.
2.2 mi. N. of 39° 20' and 0.83 mi. E. of 80° 25'—C—Clarksburg Quadrangle.
Elevation, 997'. Starts about 135' below the Pittsburgh Coal. 5 3/4" casing, 2630'; 3" tubing, 4386'.

- 0 - 2390 No record (6" hole to 2630' where reduced to 5")
- 2390 - 2630 Lime and slate
- 2630 - 2684 Lime and shells
- 2684 - 2697 Sand
- 2697 - 2942 Lime and slate
- 2942 - 2962 Speckley Sand (gas, 2947')
- 2962 - 3114 Lime and slate
- 3114 - 3205 Balltown Sand (gas 3160' and 3181')
- 3205 - 3683 Lime and slate
- 3683 - 3715 "Hornor" Sand (gas, 3695-3699')
- 3715 - 3875 Hard, but little sand
- 3875 - 3985 Lime and slate
- 3985 - 3995 Sand (gas)
- 3995 - 4162 Lime and slate
- 4162 - 4234 1/2 Lime and slate
- 4234 1/2 - 4319 Lime and slate
- 4319 - 4325 Benson Sand (gas, 4325')
- 4386 Total depth

J. L. Swiger No. 1 Well

Sardis District, Harrison County, W. Va.
By Hartman Oil Co., Pittsburgh, Pa.
On Laurel Run, 1 1/2 mi. N.E. of Brown.
Elevation, 1110'. Starts 2' below Washington Coal.
Record published on p. 311 of Volume I(a). Tabulated as No. 379 on p. 443 of Doddridge-Harrison Report, but record not published. Well penetrated to about the Speckley Sand horizon.

- 140 - 160 Bluff Sand (Waynesburg)
- 160 - 2445 Gantz Sand
- 2445 - 2694 Gordon Stray Sand
- 2694 - 2717 Gordon Sand
- 2717 - 2733 Gordon Sand
- 2733 - 2780 Fourth Sand
- 2780 - 3218 Sand, hard
- 3218 - 3225 Sand, hard
- 3225 - 3635 Total depth

B. F. Trash No. 3510 Well

Union District, Harrison County, W. Va.
By Hope Natural Gas Co., 445 W. Main St., Clarksburg, W. Va.
On north side of Two Lick Creek, 2.45 mi. S.W. of Goodhope and 1.36 mi. S. of Tichenal.
0.3 mi. N. of 39° 10' and 0.95 mi. E. of 80° 30'—NW—Weston Quadrangle.
Elevation, 1194' L.

- 4495 - 4510 Benson Sand
- 4539 Total depth

Scale 1/4" = 100' of original tracing. Date 1/15/36

156 IMPERIAL K-E TRACING CLOTH T.M. 66737

Office of Oil & Gas Statistical Report 1980

COMPUTER NUMBERS FOR WELLS DRILLED PRIOR TO 1979
 TABLE 5 Pg. (3) HARRISON COUNTY (047-033) PERMITS TO DRILL AND WELLS COMPLETED, 1980 (SUPPLEMENT SHEET)

PERMIT NUMBER	WELL OPERATOR	FARM	WELL NUMBER	ELEV.	DISTRICT	TOTAL DEPTH	OIL-GAS DRY	DATE ISSUED	DATE COMPLETED	INITIAL OPEN FLOW GAS - Cu. ft. OIL - bbls
2316	Eagle Gas Company	Jesse Haggerty	2		Sardis					
2317	Pennzoll Company	T. F. Odgen	2		Sardis					
2318	Morgan - Miller	Dawson Mines			Coal					
2319	Morgan - Miller	North View			Coal					
2326	E & C Gas Company	Gilbert & Swiger	1		Eagle					
2339	Jerry C. Olds	Maxwell	23		Union					
2340	Jerry C. Olds	Maxwell	21		Union					
2341	Jerry C. Olds	Maxwell	19		Union					
2345	Garner & Gawthrop	Furner	2		Ten Mile					
2346	Garner & Gawthrop	John Monroe	4		Ten Mile					
2349	Eagle Gas Company	Consolidated II -12	73		Clay					
2381	Garner & Gawthrop	A. P. Flanagan	3		Ten Mile					
2383	Pennzoll Company	Nathan Goff	40		Sardis					
2384	Pennzoll Company	Nathan Goff	43		Sardis					
2385	Hugh Spencer	Mary V. Peck	1		Union					
2386	Hugh Spencer	L. E. Barnett	1		Clark					
2387	Hugh Spencer	B. L. Gawthrop	1		Clark					
2401	Garner & Gawthrop	Furner	4		Ten Mile					

← 33-2326

6711 - 6719	Slate, black		and 6800')
6719 - 6734	Shale, dark (gas pocket, 6734')	6810 - 6815	Lime, hard, Corniferous (gas pocket 6813')
6734 - 6777	Slate, dark (gas pocket, 6766-6775')	6815 - 6824	Lime, black, hard, to bottom
6777 - 6810	Slate, dark (gas pocket, 6794', 6798')		

Gilbert Swiger No. Well

Eagle District, Harrison County, W. Va.
 By Lumberport-Shinnston Gas Co., Lumberport, W. Va.
 On south side of Tenmile Creek, at Rosebud, 1.0 mi. S.E. of Dola, and 1.4 mi. N.W. of Robey.
 2.2 mi. N. of 39° 20' and 0.83 mi. E. of 80° 25'—C—Clarksburg Quadrangle.

Elevation, 997'. Starts about 135' below the Pittsburgh Coal.
 5 $\frac{1}{8}$ " casing, 2630'; 3" tubing, 4386'.

now:
2326

0 - 2390	No record (6" hole to 2630' where reduced to 5")	3205 - 3683	Lime and slate
2390 - 2630	Lime and slate	3683 - 3715	"Hornor" Sand (gas, 3695-3699')
2630 - 2684	Lime and shells	3715 - 3875	Hard, but little sand
2684 - 2697	Sand	3875 - 3985	Lime and slate
2697 - 2942	Lime and slate	3985 - 3995	Sand (gas)
2942 - 2962	Speechley Sand (gas, 2947')	3995 - 4162	Lime and slate
2962 - 3114	Lime and slate	4162 - 4234 $\frac{1}{2}$	Lime and slate
3114 - 3205	Balltown Sand (gas 3160' and 3181')	4234 $\frac{1}{2}$ - 4319	Lime and slate
		4319 - 4325	Benson Sand (gas, 4325')
		4386	Total depth

J. L. Swiger No. 1 Well

Sardis District, Harrison County, W. Va.
 By Hartman Oil Co., Pittsburgh, Pa.
 On Laurel Run, 1 $\frac{1}{2}$ mi. N.E. of Brown.
 Elevation, 1110' B. Starts 2' below Washington Coal.
 Record published on p. 311 of Volume I(a). Tabulated as No. 379 on p. 443 of Doddridge-Harrison Report, but record not published.
 Well penetrated to about the Speechley Sand horizon.

140 - 160	Bluff Sand (Waynesburg)	2445 - 2470	Gantz Sand
558 -	Pittsburgh Coal	2682 - 2694	Gordon Stray Sand
1075 -	Dunkard Sand	2717 - 2733	Gordon Sand
1356 - 1470	Gas Sand	2773 - 2780	Fourth Sand
1500 - 1640	Salt Sand	3218 - 3225	Sand, hard
1855 - 1965	Big Injun Sand	3635	Total depth

B. F. Trash No. 3510 Well

Union District, Harrison County, W. Va.
 By Hope Natural Gas Co., 445 W. Main St., Clarksburg, W. Va.
 On north side of Two Lick Creek, 2.45 mi. S.W. of Goodhope and 1.36 mi. S. of Tichenal.
 0.3 mi. N. of 39° 10' and 0.95 mi. E. of 80° 30'—NW—Weston Quadrangle.

Elevation, 1194' L.	
4495 - 4510	Benson Sand
 4539 Total depth