

WW-7
8-30-06



West Virginia Department of Environmental Protection
Office of Oil and Gas
WELL LOCATION FORM: GPS

API: 47-033-02375 WELL NO.: 1

FARM NAME: Vonda Martin

RESPONSIBLE PARTY NAME: XTO Energy, Inc.

COUNTY: Harrison DISTRICT: Eagle

QUADRANGLE: Wallace

SURFACE OWNER: Harrison County Coal Company

ROYALTY OWNER: Orson White/Billie J. Conrad/Ellen L Himes/E.D. Anderson

UTM GPS NORTHING: 4361726.4

UTM GPS EASTING: 552152.2 GPS ELEVATION: 339m (1111')

RECEIVED
Office of Oil and Gas
JUL 18 2016
WV Department of
Environmental Protection

The Responsible Party named above has chosen to submit GPS coordinates in lieu of preparing a new well location plat for a plugging permit or assigned API number on the above well. The Office of Oil and Gas will not accept GPS coordinates that do not meet the following requirements:

1. Datum: NAD 1983, Zone: 17 North, Coordinate Units: meters, Altitude: height above mean sea level (MSL) – meters.
2. Accuracy to Datum – 3.05 meters
3. Data Collection Method:

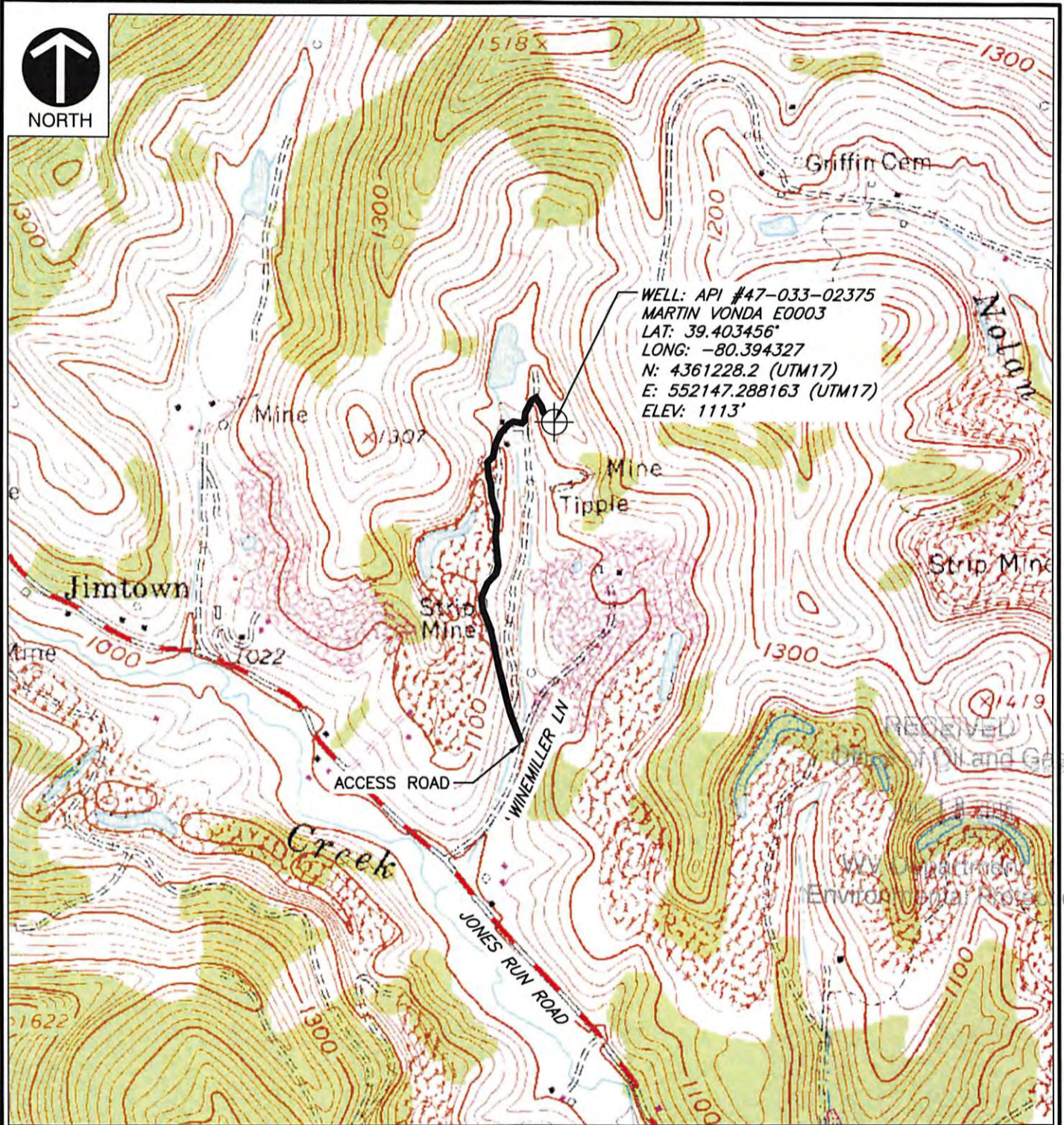
Survey grade GPS : Post Processed Differential
 Real-Time Differential
 Mapping Grade GPS : Post Processed Differential
 Real-Time Differential

4. Letter size copy of the topography map showing the well location.

I the undersigned, hereby certify this data is correct to the best of my knowledge and belief and shows all the information required by law and the regulations issued and prescribed by the Office of Oil and Gas.

Jacquelyn Kuebler Signature Project Manager Title July 5, 2016 Date

08/26/2016



P:\2015\151-114\CADD\DWG\CV01\151114-MARTIN VONDA LOCATION MAP.dwg[3] LS:(11/10/2015 - zdemarco) - LP: 11/10/2015 1:04 PM

REFERENCE
 1. USGS 7.5 MIN QUAD - WALLACE, WV

SCALE IN FEET
 0 1000 2000

CEC
Civil & Environmental Consultants, Inc.
 600 Market Place - Suite 200 - Bridgeport, WV 26330
 Ph: 304.933.3119 · Fax: 304.933.3327
 www.cecinc.com

XTO ENERGY, INC.
 MARTIN VONDA PLUGGING PROJECT
 HARRISON COUNTY, WEST VIRGINIA

PROJECT LOCATION MAP

DRAWN BY: ZMD	CHECKED BY: JDK	APPROVED BY: DEM	FIGURE NO.:
DATE: NOVEMBER 2015	DWG SCALE: 1" = 1000'	PROJECT NO: 151-114.0041	1 08/26/2016