

WW-7
8-30-06



West Virginia Department of Environmental Protection
Office of Oil and Gas
WELL LOCATION FORM: GPS

API: 47-033-02935 WELL NO.: WV 149371 (Bramer #3 E-955)

FARM NAME: Ralph W. Bramer

RESPONSIBLE PARTY NAME: EQT Production Company

COUNTY: Harrison DISTRICT: Sardis

QUADRANGLE: Wolf Summit 7.5'

SURFACE OWNER: James S. Raines, et al.

ROYALTY OWNER: Buffco Productions Inc., et al.

UTM GPS NORTHING: 4357825

UTM GPS EASTING: 546815 GPS ELEVATION: 378 m (1239 ft)

The Responsible Party named above has chosen to submit GPS coordinates in lieu of preparing a new well location plat for a plugging permit or assigned API number on the above well. The Office of Oil and Gas will not accept GPS coordinates that do not meet the following requirements:

- Datum: NAD 1983, Zone: 17 North, Coordinate Units: meters, Altitude: height above mean sea level (MSL) – meters.
- Accuracy to Datum – 3.05 meters
- Data Collection Method:
Survey grade GPS ; Post Processed Differential
Real-Time Differential
Mapping Grade GPS ; Post Processed Differential
Real-Time Differential

Received
Office of Oil & Gas
APR 18 2016

4. Letter size copy of the topography map showing the well location.

I the undersigned, hereby certify this data is correct to the best of my knowledge and belief and shows all the information required by law and the regulations issued and prescribed by the Office of Oil and Gas.

Stacy O'Brien
Signature

PS # 2100
Title

3/31/16
Date

3302935P

Topo Quad: Wolf Summit 7.5' Scale: 1" = 2000'

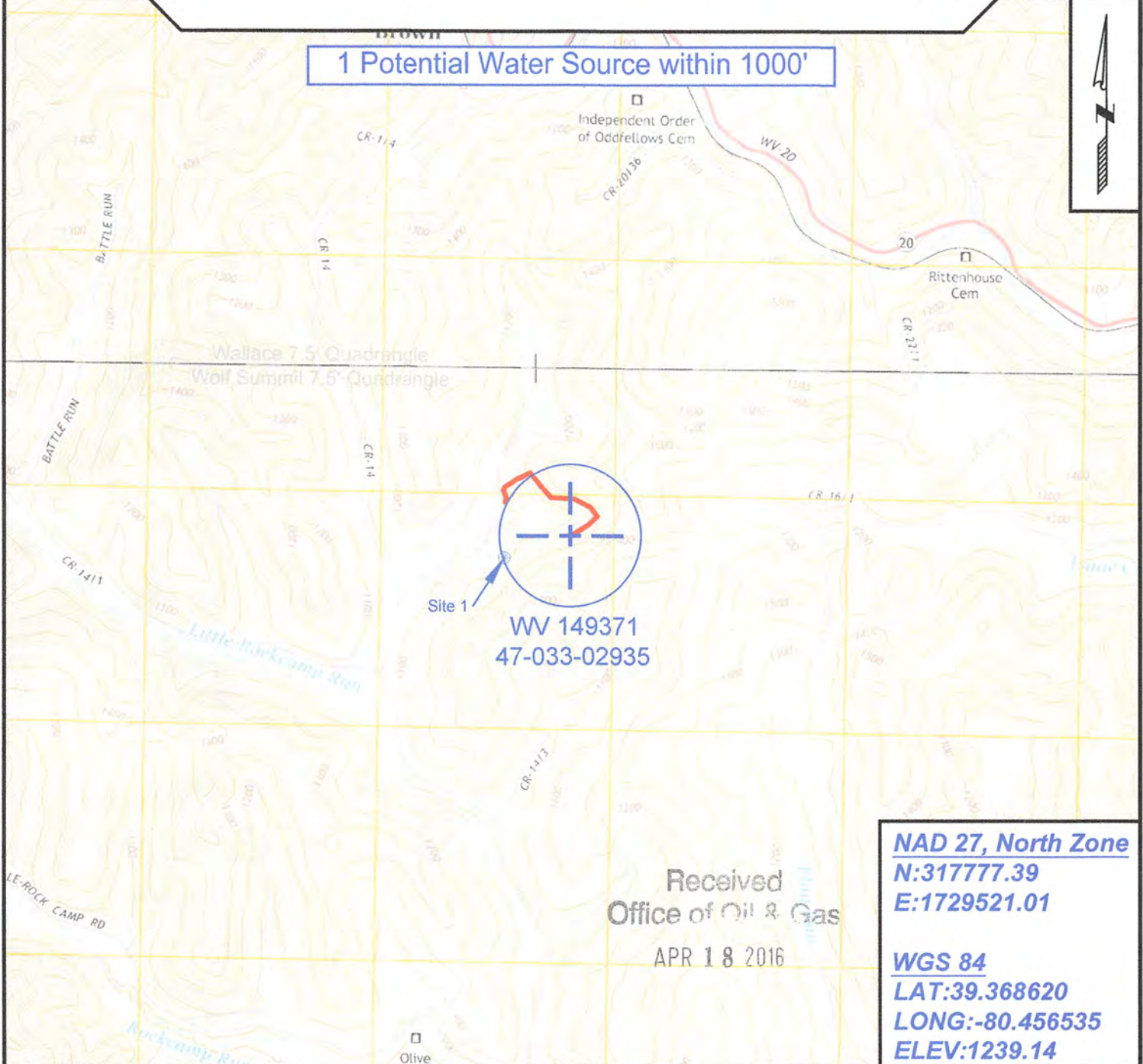
County: Harrison Date: March 9, 2016

District: Sardis Project No: 70-36-00-08

Water

47-033-02935 WV 149371 (Bramer #3 E-955)

1 Potential Water Source within 1000'



Received
Office of Oil & Gas

APR 18 2016

NAD 27, North Zone
N:317777.39
E:1729521.01

WGS 84
LAT:39.368620
LONG:-80.456535
ELEV:1239.14



SURVEYING AND MAPPING SERVICES PERFORMED BY:

ALLEGHENY SURVEYS, INC.

1-800-482-8606
237 Birch River Road
Birch River, WV 26610
PH: (304) 649-8606
FAX: (304) 649-8608

PREPARED FOR:

EQT Production Company

P.O. Box 280
Bridgeport, WV 26330

05/20/2016