

WW-7  
8-30-06



West Virginia Department of Environmental Protection  
Office of Oil and Gas  
WELL LOCATION FORM: GPS

API: 47-033-03256 WELL NO.: BBJ-1

FARM NAME: Burnside/Blake

RESPONSIBLE PARTY NAME: Antero Resources Corporation

COUNTY: Harrison DISTRICT: Simpson

QUADRANGLE: Clarksburg

SURFACE OWNER: Khan T & Laverne R Kesselman

ROYALTY OWNER: Antero Resources Corporation

UTM GPS NORTHING: 4350902.93 m (208')

UTM GPS EASTING: 562859.65 m GPS ELEVATION: 368.35 m

The Responsible Party named above has chosen to submit GPS coordinates in lieu of preparing a new well location plat for a plugging permit or assigned API number on the above well. The Office of Oil and Gas will not accept GPS coordinates that do not meet the following requirements:

- Datum: NAD 1983, Zone: 17 North, Coordinate Units: meters, Altitude: height above mean sea level (MSL) – meters.
- Accuracy to Datum – 3.05 meters
- Data Collection Method:

Survey grade GPS X: Post Processed Differential \_\_\_\_\_  
Real-Time Differential X

Mapping Grade GPS X: Post Processed Differential \_\_\_\_\_  
Real-Time Differential X

- Letter size copy of the topography map showing the well location.

I the undersigned, hereby certify this data is correct to the best of my knowledge and belief and shows all the information required by law and the regulations issued and prescribed by the Office of Oil and Gas.

Matt Smith  
Signature

Permitting Supervisor  
Title

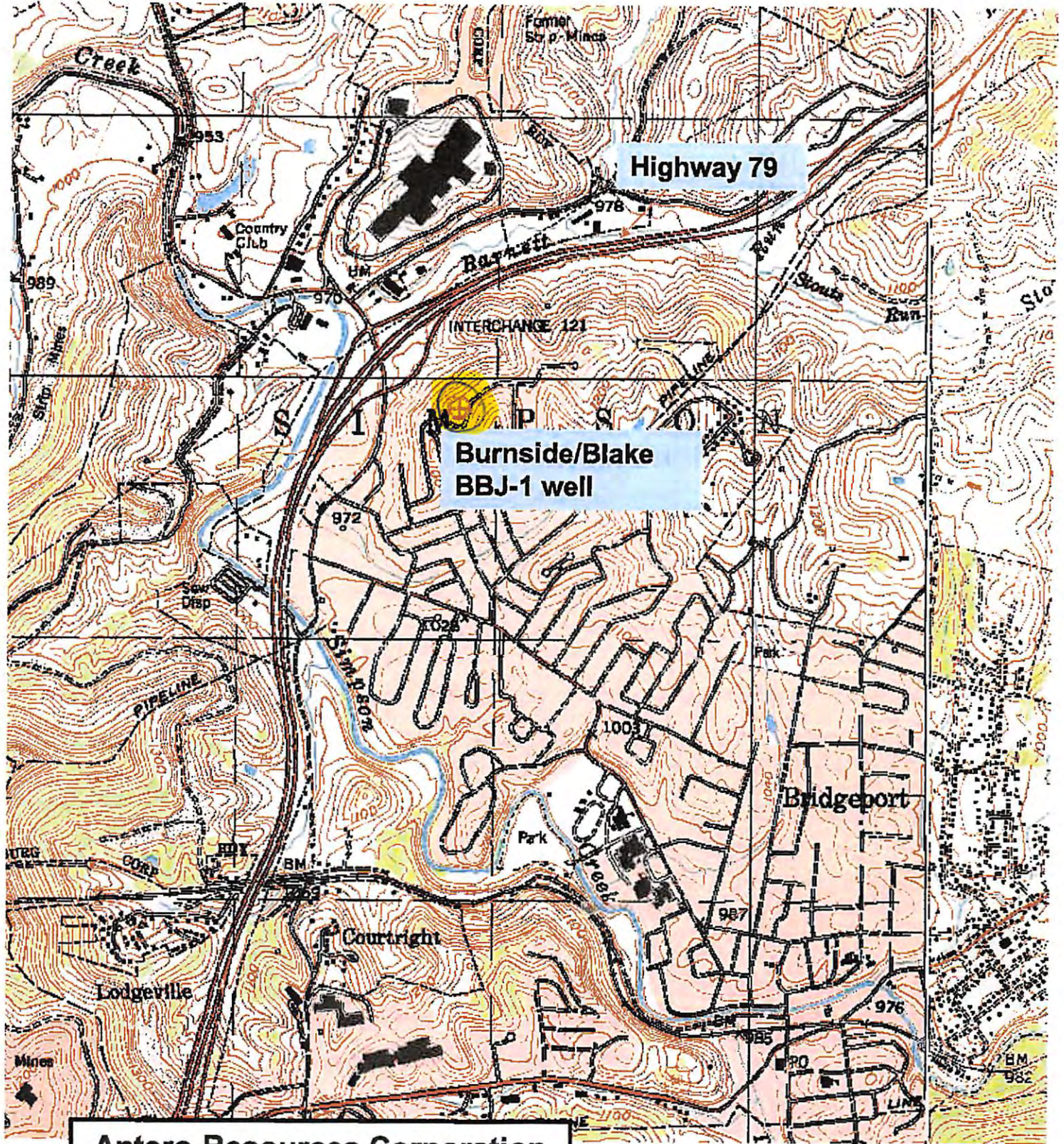
10/4/17  
Date

RECEIVED  
Office of Oil and Gas

NOV 09 2017

WV Department of  
Environmental Protection





**Antero Resources Corporation**  
 Appalachian Basin  
 BBJ-1  
 Harrison County

Quadrangle: Clarksburg 7.5'  
 Watershed: Simpson Creek  
 District: Simpson  
 Date: 10-03-2017

RECEIVED  
 Office of Oil and Gas  
 NOV 09 2017  
 WV Department of  
 Environmental Protection  
 01/26/2018